

RATIO RELAY VALVE

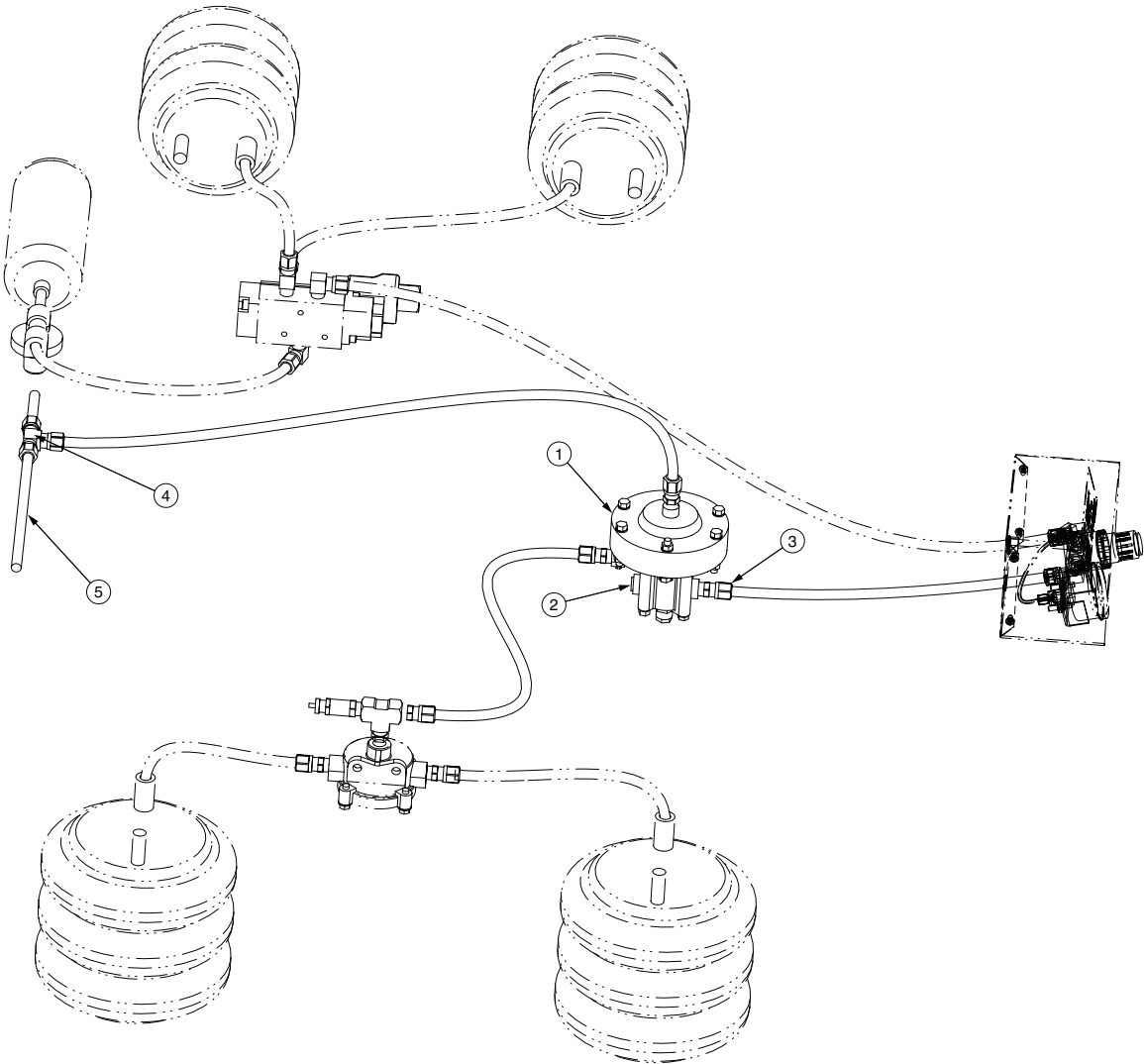
The Ratio Relay Valve is to be used when the drive axle(s) have air suspensions, especially on single axles. This helps insure that the auxiliary axle will not overpower the drive axle(s).

SELF-STEER
LIFTAXLES

NON-STEER
LIFTAXLES

OPTIONAL
EQUIPMENT

SPEC'ING &
OPERATION



RATIO RELAY VALVE PART NO. 1350-1016

ITEM	PART NO.	DESCRIPTION	QTY
1	1301-0531	VALVE, RATIO RELAY1
2	1302-2077	AIR FTG/PLUG (1/4 NPT)2
3	1302-4073	CONNECTOR, 3/8 TB 1/4 M-NPT, DOT3
4	1302-4084	TEE, 3/8 UNION, DOT1
5	1303-4000	AIRLINE-NYLON, .375 O.D., BULK10 FT
-	1500-1280	BOX (12.75 X 11.38 X 12.88) (NOT SHOWN)1

SERVICE
PARTS