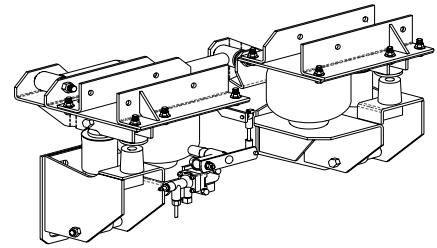
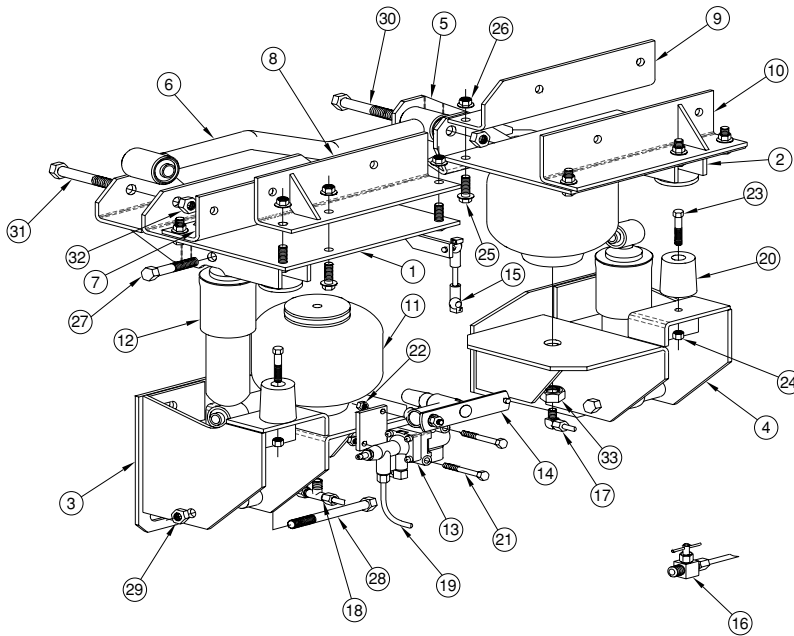


# Cabmate



CABMATE MODEL  
**KWMC642**  
2550-0000 FACTORY

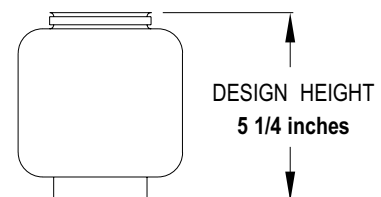
**FITS:** Factory installed on T600, T800, W900 models with cab and sleeper unified by subframe.

**NOTES:**

**SERVICE PARTS ONLY**

## PARTS LIST

1	2550-1000	UNIT TOP-DRIVER SIDE	1
2	2550-2000	UNIT TOP-PASSENGER SIDE	1
3	2550-3000	UNIT BOTTOM-DRIVER SIDE	1
4	2550-4000	UNIT BOTTOM-PASSENGER SIDE	1
5	2550-5000	LATERAL CONTROL MOUNT BRACKET	1
6	2550-6000	LATERAL CONTROL ROD	1
7	2550-7050	MOUNT ANGLE BRACKET-DRIVER FRONT	1
8	2550-7060	MOUNT ANGLE BRACKET-DRIVER REAR	1
9	2550-7070	MOUNT ANGLE BRACKET-PASSENGER FRONT	1
10	2550-7080	MOUNT ANGLE BRACKET-PASSENGER REAR	1
11	1102-0074	AIR SPRING	2
12	1202-0054	SHOCK ABSORBER	2
13	1301-0010	HEIGHT CONTROL VALVE	1
14	2990-0700	VALVE ARM	1
15	1500-0238	VALVE LINKAGE	1
16	1302-0081	MANUAL SHUT OFF VALVE (1/4 NPT)	1
17	1302-1105	MALE ELBOW (1/8 NPT)	1
18	1302-1143	MALE BRANCH TEE (1/8 NPT)	1
19	1302-0090	1/4 AIRLINE	4.2'
20	1500-0070	RUBBER BUMPER	2
21	1401-0816	1/4 X 2 UNC BOLT	2
22	1476-0800	1/4 UNC LOCK NUT	2
23	1401-1012	5/16 X 1 1/2 UNC BOLT	2
24	1476-1000	5/16 UNC LOCK NUT	2
25	1411-1208	3/8 X 1 UNC FLANGE BOLT	12
26	1480-1201	3/8 UNC TOP LOCK FLANGE NUT	12
27	1403-1418	7/16 X 2 1/4 UNF BOLT	2
28	1403-1432	7/16 X 4 UNF BOLT	2
29	1477-1400	7/16 UNF LOCK NUT	4
30	1404-1624	1/2 X 3 UNF BOLT (GRADE 8)	1
31	1404-1626	1/2 X 3 1/4 UNF BOLT (GRADE 8)	1
32	1477-1601	1/2 UNF TOP LOCK NUT	2
33	1475-2400	3/4 UNF JAM NUT	2



ford

freightliner

gmc

international

kenworth

mack  
marron

peterbilt

sterling

volvo  
western star