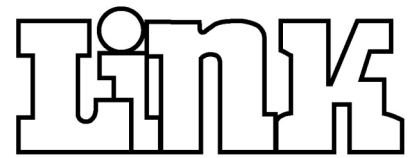
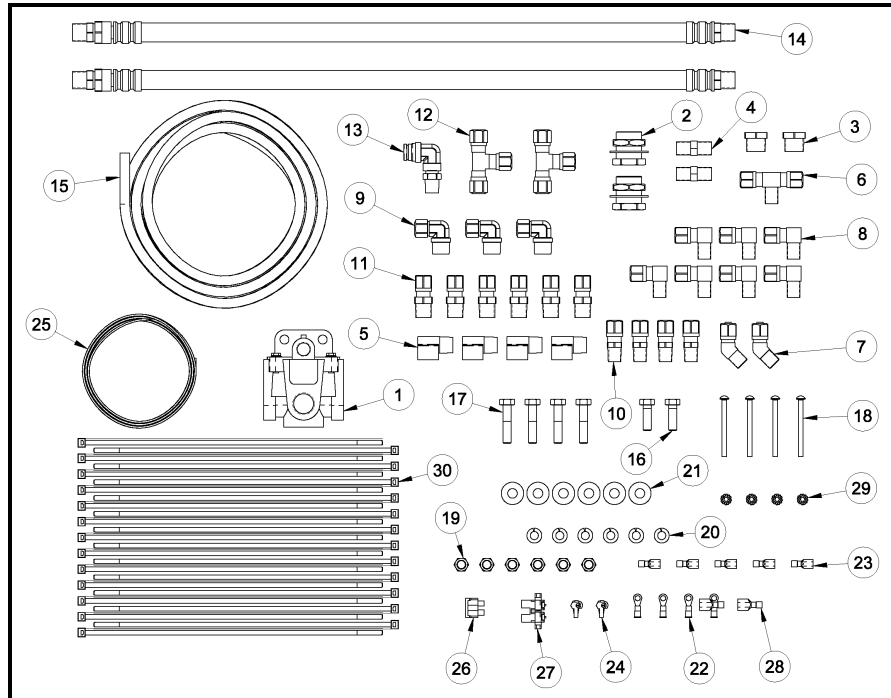


PARTS LIST (800A0014)



LIFTABLE SUSPENSIONS



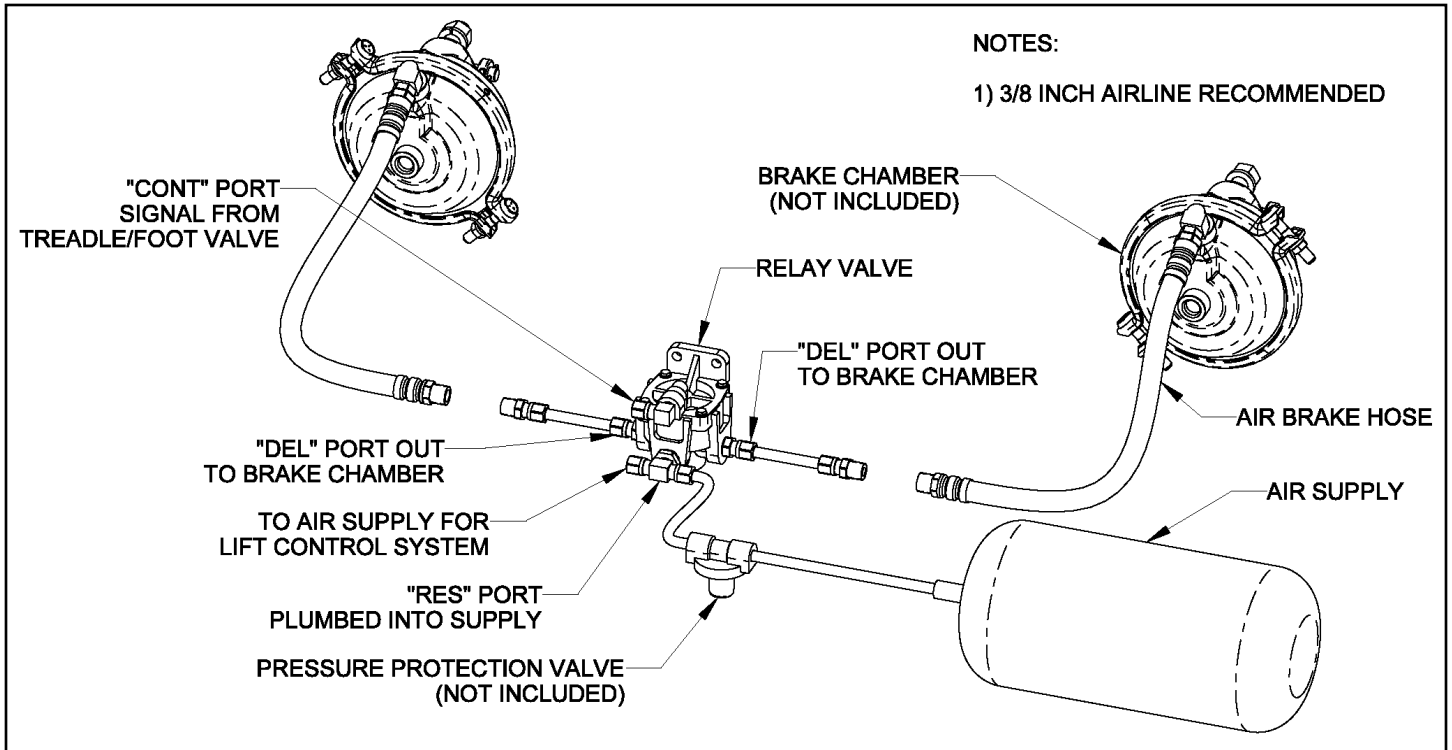
ITEM	PART #	DESCRIPTION	QTY
1	1301-0508	RELAY VALVE, RG-2, MIDLAND	1
2	1302-2004	COUPLING-BULKHEAD, 3/8 F-NPT	2
3	1302-2018	BUSHING-REDUCER, 1/2 M-NPT - 1/4 F-NPT	2
4	1302-2065	HEX NIPPLE, 1/4 M-NPT	2
5	1302-2102	ELBOW, 90 STREET (3/8-NPT)	4
6	1302-4012	MALE BRANCH TEE, 3/8 TB 1/4 M-NPT, DOT	1
7	1302-4021	ELBOW 45, 3/8 TB, 1/4 M-NPT, DOT	2
8	1302-4039	MALE ELBOW, 3/8 TB 1/4 M-NPT, DOT	7
9	1302-4040	ELBOW-3/8 TB, 3/8 M-NPT	3
10	1302-4073	CONNECTOR, 3/8 TB 1/4 M-NPT, DOT	4
11	1302-4074	CONNECTOR, 3/8 TB 3/8 M-NPT, DOT	6
12	1302-4084	TEE, 3/8 UNION, DOT	2
13	1302-5094	ELBOW-SWIV, 3/8 TB, 1/4 M-NPT	1
14	1302-9972	ASSEMBLY-AIR BRAKE HOSE (26 IN.)	2
15	13034G55	AIRLINE-NYLON, .375 O.D., 65.0' COIL	1
16	140B-1008	5/16 X 1 UNC HEX CAP SCR (GR 8) O&P	2
17	140B-1012	5/16 X 1 1/2 UNC HEX CAP SCR (GR 8) O&P	4
18	144N-0B18	10-32 X 2 1/4 ROUND HEAD MACH. SCREW	4
19	1470-1004	5/16 UNC HEX NUT (GR B) O&P	6
20	1485-1004	5/16 LOCK WASHER OIL&PHOS	6
21	14871000	5/16 TYPE A PLAIN WASHER	6
22	1505-0055	TERMINAL-RING, #10 STUD, 14-16	4
23	1505-1100	CONNECTOR-SLIDE, FEMALE, 14-16	5
24	1505-1250	T-TAP, 14-18	2
25	1505-1505	WIRE-PRIMARY, 14 GA. GPT (BLACK) 30 FT.	1
26	1505-1868	FUSE-AUTOMOTIVE, 10 AMP	1
27	1505-1884	HOLDER-FUSE, AUTOMOTIVE, 14-18	1
28	15051101	CONNECTOR-SLIDE, MALE, 14-16	2
29	1506-0042	10-32 KEP NUT	4
30	1506-0081	NYLON CABLE TIE, 11" LONG	25

Link Mfg. Ltd.
223 15th St. N.E.
Sioux Center, IA USA
51250-2120

(712) 722-4874
Fax (712) 722-4876

**QUESTIONS?
CALL CUSTOMER
SERVICE
1-800-222-6283**

BRAKE PLUMBING DIAGRAM



LINK MANUFACTURING, LTD.
223 15TH ST. NE
SIOUX CENTER, IA 51250
1-800-222-6283