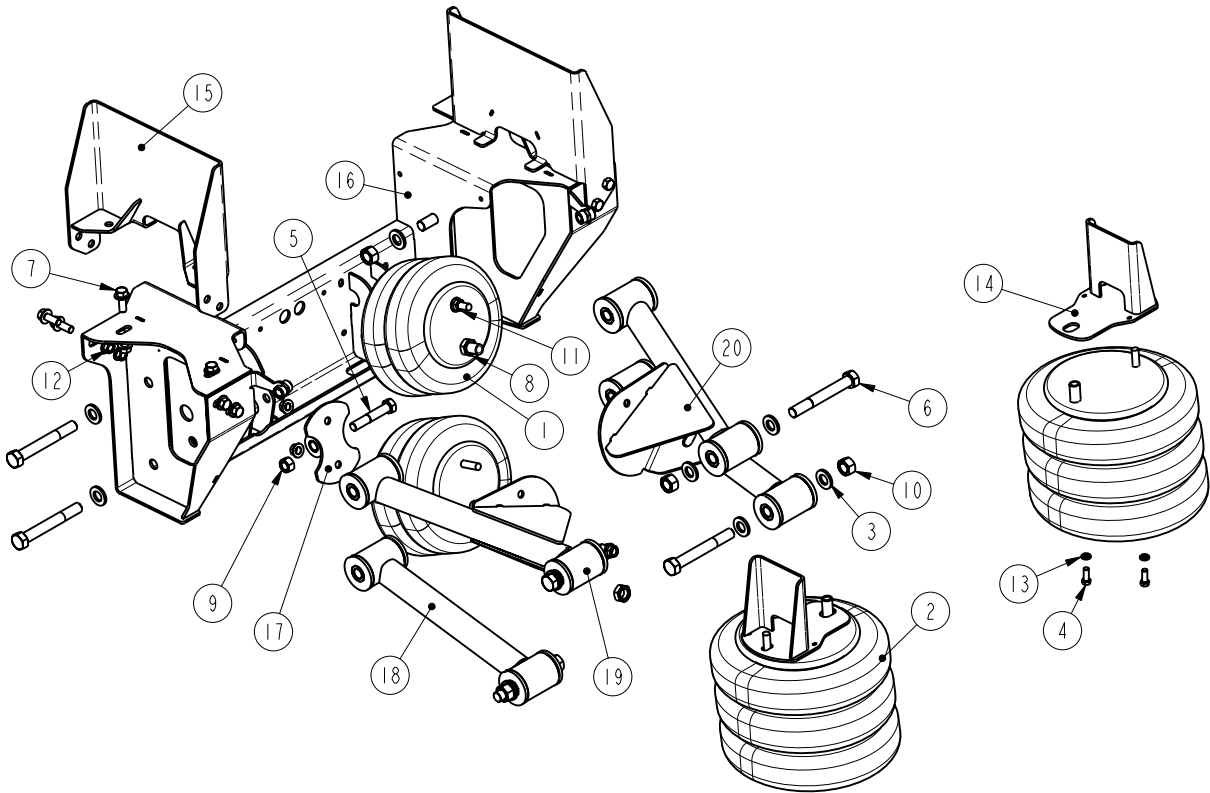


# SS-135 13.5K SELF-STEER

Link Part Number: 8A000723 - Current



**REPLACEMENT  
KIT PART  
NUMBERS:**

ARM BUSHING KIT:  
800A0133

**IMPORTANT NOTES:**

1. MULTIPLE OPTIONS  
EXIST—CALL FOR  
DETAILS.

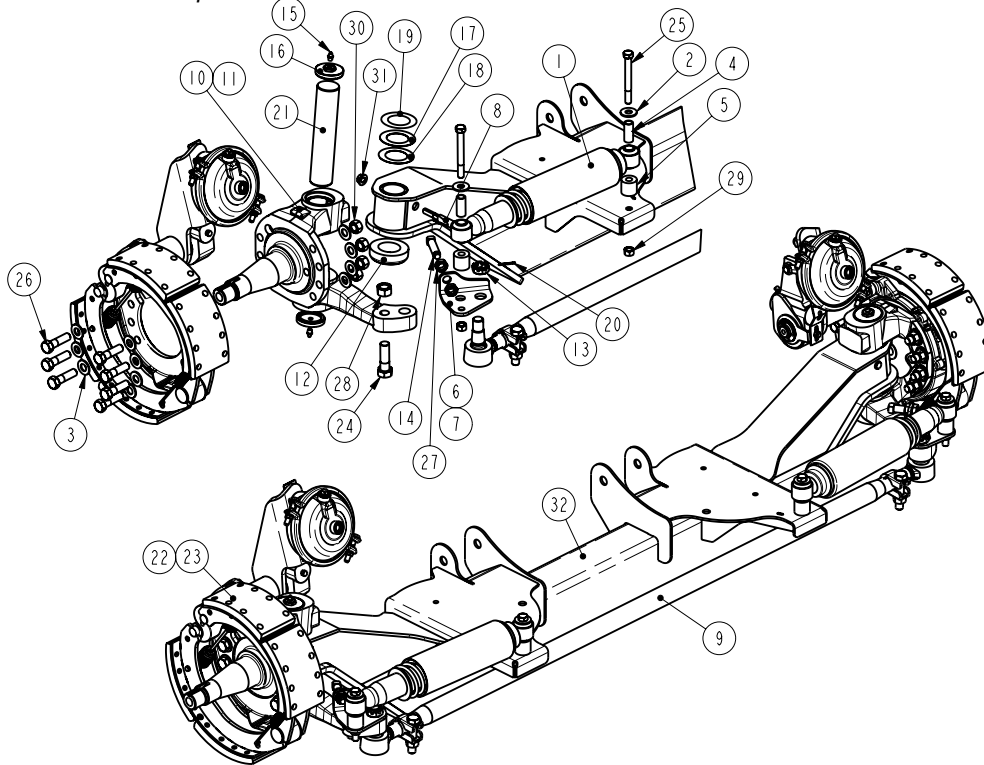
ITEM	PART NO	PART DESCRIPTION	QTY
1	11030019	SPRING-AIR .....	2
2	11030056	SPRING-AIR .....	2
3	14882402	3/4 HARDENED WASHER, ZINC PLATED.....	16
4	140B1208	3/8 X 1 UNC HEX CAP SCR (GR 8) O&P.....	4
5	140D2028	5/8 X 3 1/2 UNF HEX CAP SCR (GR 8) O&P.....	2
6	140D2446	3/4 X 5 3/4 UNF HEX CAP SCR (GR 8) O&P.....	8
7	141A1610	1/2 X 1 1/4 UNC FLANGE BOLT (GR 8) O&P.....	12
8	14752402	3/4 UNF HEX JAM NUT, O&P.....	4
9	14772006	5/8 UNF HEX TOP LOCK NUT (GR C) O&P.....	2
10	14772406	3/4 UNF HEX TOP LOCK NUT (GR C) O&P.....	8
11	14801600	1/2 UNC SERRATED FLANGE NUT.....	8
12	14801604	1/2 UNC TOP LOCK FL NUT (GR G) O&P.....	12
13	14851200	3/8 LOCK WASHER .....	4
14	SEE NOTE 1	BRACKET-MOUNT, AIRSPRING.....	2
15	SEE NOTE 1	BRACKET-MOUNT, FRAME.....	2
16	810A0099	HANGER-WELDMENT .....	1
17	810A0100	ASSEMBLY-SWIVEL PLATE.....	2
18	820A0084	ARM-CONNECTING .....	2
19	820A0100	ARM-CONNECTING, LH.....	1
20	820A0101	ARM-CONNECTING, RH.....	1
21	830A0312	ASSEMBLY-AXLE,13.5K.....	1
22	840A0140	KIT-WHEEL END, HUB.....	1



# SS-135 13.5K SELF-STEER

Link Part Number: 830A0312 - Current

## Axle Assembly for 8A000723 Suspension



### REPLACEMENT KIT PART NUMBERS:

KING PIN KIT:  
84001998

SHOCK KIT:  
12100015

ITEM	PART NO	PART DESCRIPTION	QTY
1	12100012	SHOCK ABSORBER, WIDE BODY.....	2
2	14871600	1/2 TYPE A PLAIN WASHER.....	4
3	14882000	5/8 SAE PLAIN WASHER.....	28
4	80000009	BUSHING-SHOCK, ACETAL.....	4
5	80001919	SPACER-MOUNT, SHOCK.....	4
6	83000236	PLATE-SHOCK MOUNT, LH.....	1
7	83000239	PLATE-SHOCK MOUNT, RH.....	1
8	83000241	PIN-DRAW, LOCKING.....	2
9	84001038	ASSEMBLY-ROD, TIE.....	1
10	84001243	INTEGRAL KNUCKLE (LEFT).....	1
11	84001244	INTEGRAL KNUCKLE (RIGHT).....	1
12	84001435	BEARING-THRUST.....	2
13	84001696	NUT-HEX, SLOTTED, .88.....	2
14	84001731	BOLT-STOP, STEERING.....	2
15	84001901	FITTING-GREASE.....	4
16	84001902	CAP-KNUCKLE.....	4
17	84001903	SHIM (.030).....	2
18	84001904	SHIM (.010).....	2
19	84001905	SHIM (.005).....	2
20	84001912	PIN, COTTER.....	2
21	84002020	PIN-KING, 13K (1.88).....	2
22	84002034	ASSEMBLY-BRAKE, 13.5K RH.....	1
23	84002035	ASSEMBLY-BRAKE, 13.5K LH.....	1
24	140B2420	3/4 X 2 1/2 UNC HEX CAP SCR (GR 8) O&P.....	2
25	140D1636	1/2 X 4 1/2 UNF HEX CAP SCR (GR 8) O&P.....	4
26	140D2018	5/8 X 2 1/4 UNF HEX CAP SCR (GR 8) O&P.....	14
27	14752000	5/8 UNF HEX JAM NUT.....	4
28	14762406	3/4 UNC HEX TOP LOCK NUT (GR C) O&P.....	2
29	14771606	1/2 UNF HEX TOP LOCK NUT (GR C) O&P.....	4
30	14772006	5/8 UNF HEX TOP LOCK NUT (GR C) O&P.....	14
31	14801404	7/16 UNC TOP LOCK FL NUT (GR G) O&P.....	2
32	830A0311	AXLE-FABRICATED, 13.5K.....	1

