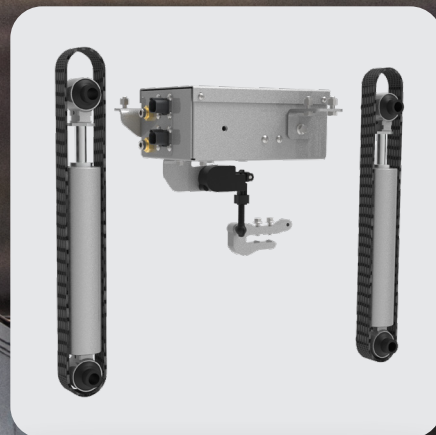


Link® | **ROAD OPTIMIZED
INNOVATIONS**

ROI CABMATE®
CAB SUSPENSION

PETERBILT 567 & 579
SLEEPER CABS | 2012 & NEWER

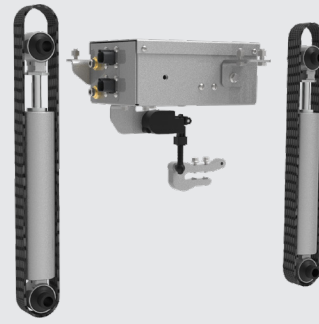


**NORTH AMERICAN
TRUCK WRITERS**
2020 Jim Winsor Memorial
Technical Achievement Award

**THE FUTURE OF
CAB SUSPENSIONS**

driven to *outperform*®

Link® ROI Cabmate® Cab Suspension



THE FUTURE OF CAB SUSPENSIONS

Today truck drivers and fleets are challenging the commercial trucking industry to create a premium driving experience. Link has listened to the call and has developed the ROI Cabmate® cab suspension.

In 1980 Link developed the Cabmate®, the first cab air suspension, that set a new standard in ride comfort. Through continuous improvement and innovation, Link is once again raising the bar by introducing a revolutionary, best-in-class cab suspension: the ROI Cabmate.

ROI Cabmate is a revolutionary cab suspension system that delivers an optimized ride regardless of road conditions. **The intelligent system uses electronically controlled shocks to increase ride comfort, improve cab stability, and reduce noise and vibration.** The shock absorbers adjust automatically in real time to deliver a driving experience that was not previously possible.

The Link ROI Cabmate is a true game changer and will be the benchmark for quality and ride comfort in the commercial trucking industry.



INCREASE RIDE COMFORT

Link engineers developed the ROI Cabmate under a directive to provide a premium driving experience.

Our proprietary control system uses sensors to monitor road conditions and adjust in real time to create optimal ride comfort by softening and reducing the impacts felt by the driver.

Passengers will also benefit from the reduction of lateral body roll and increased comfort over road transitions in the sleeper of the cab.

"As a team driver, I love that I can get better sleep. The bridge transitions don't wake me up anymore."

– Randy Truck driver, 27 years of experience



IMPROVE CAB STABILITY

Our proprietary system is programmed to help keep the driver safely in control of the truck.

By reducing vertical travel and body roll, the operator is able to maintain hand positions and a steady line of sight on the road during high speed maneuvering and wind shear.

"The system provided a huge improvement in high wind shear, with almost no cab roll."

– Russ Truck driver, 11 years of experience



REDUCE NOISE AND VIBRATION

Class 8 trucks equipped with the ROI Cabmate will provide a best-in-class cab experience by reducing noise, vibration and harshness.

Studies have shown that vibration experienced by drivers can affect concentration, alertness and cause fatigue in short periods of time.^[1] Driver fatigue remains a serious concern for the trucking industry as it continues to be the leading cause of fatal truck accidents.^[2]

"My drivers tell me they feel less tired at the end of the day and more refreshed in the morning. Our trucks drive long haul across Mexico so I feel reassured knowing my drivers are happier and safer."

– Fausto Fleet owner, 25 years of experience

[1] RMIT University. "Snooze mobiles: How vibrations in cars make drivers sleepy" ScienceDaily. 5 July 2018.
[2] Wise, J.M., Heaton, K. & Patrician, P. (2019). Fatigue in Long-Haul Truck Drivers: A Concept Analysis. Workplace Health & Safety, 67(2), 68-77. DOI: 10.1177/2165079918800509

Specialty
Engineered
Suspensions

Phone +1 800 222 6283 | info@linkmfg.com | **ROICabmate.com**

LINK MFG. 1/7/21

NOTE: Link is not responsible for optional configurations or equipment that restrict the installation of this product in any way.