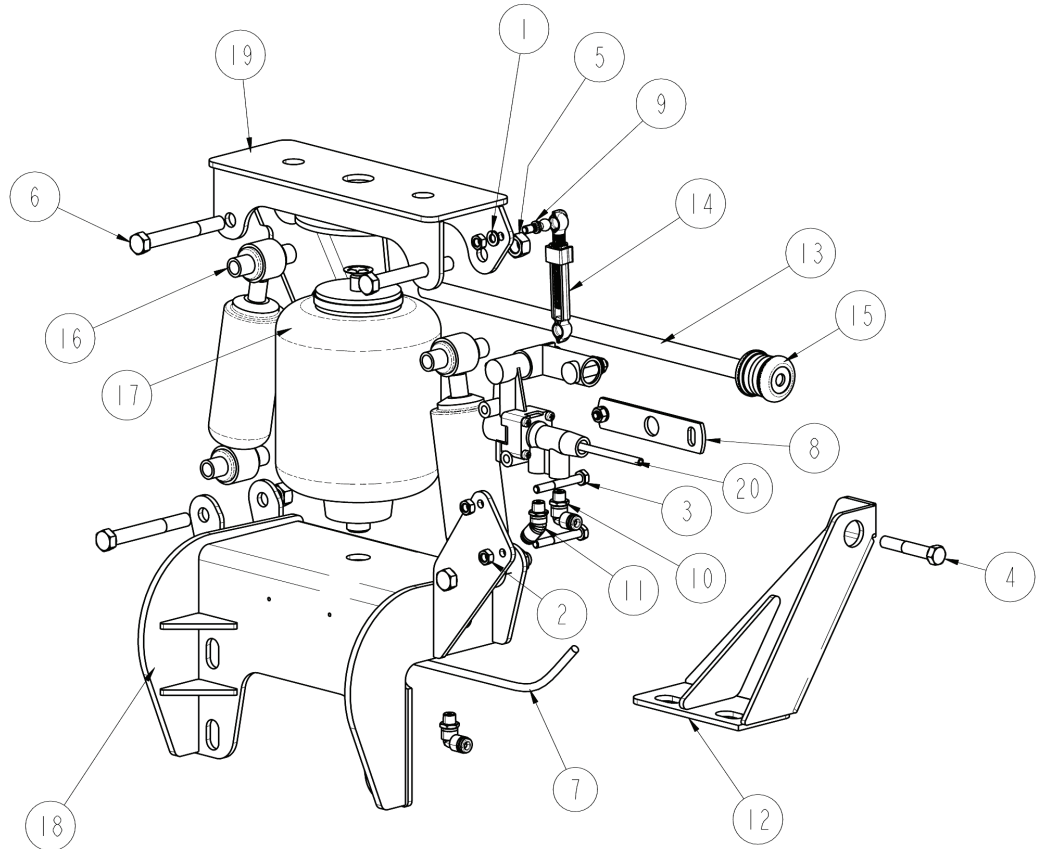
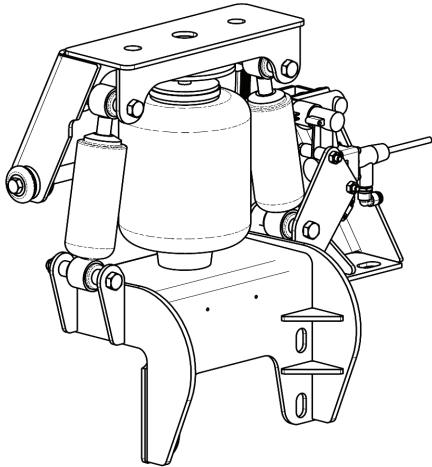


LINK[®] Cabmate[®] Cab Air Suspension

CABMATE MODEL: KWB500 (25350000)



ITEM	PART #	DESCRIPTION	QTY	ITEM	PART #	DESCRIPTION	QTY
1	1485-0800	1/4 LOCK WASHER	1	11	13025202	ELBOW, 45° 1/4 TB 1/8 M-NPT	1
2	1476-0800	1/4 UNC HEX CTR LOCK NUT (GR B)	2	12	2535-3000	LATERAL CONTROL MOUNT	1
3	1401-0816	1/4 X 2 UNC HEX CAP SCR (GR 5)	2	13	2535-4001	LATERAL CONTROL ROD	1
4	1403-1218	3/8 X 2 1/4 UNF HEX CAP SCR (GR 5)	2	14	29910051	LINKAGE-VALVE	1
5	1477-1400	7/16 UNF HEX CTR LOCK NUT (GR B)	4	15	1500-0840	RUBBER BUSHING PACKAGE	2
6	1403-1428	7/16 X 3 1/2 UNF HEX CAP SCR (GR 5)	4	16	1202-0044	SHOCK ABSORBER	2
7	13020090	AIRLINE-NYLON, .250 O.D., BULK (FEET)	0.8	17	1101A042	SPRING-AIR	1
8	2990-0700	ASSEMBLY-ARM, VALVE	1	18	2535-2000	UNIT BOTTOM	1
9	29910026	BALL-PIVOT, THREADED	1	19	2535-1000	UNIT TOP	1
10	13025203	ELBOW, 1/4 TB 1/8 M-NPT	2	20	1301-0018	VALVE-CONTROL, HEIGHT	1

CABMATE® MODEL 25350000



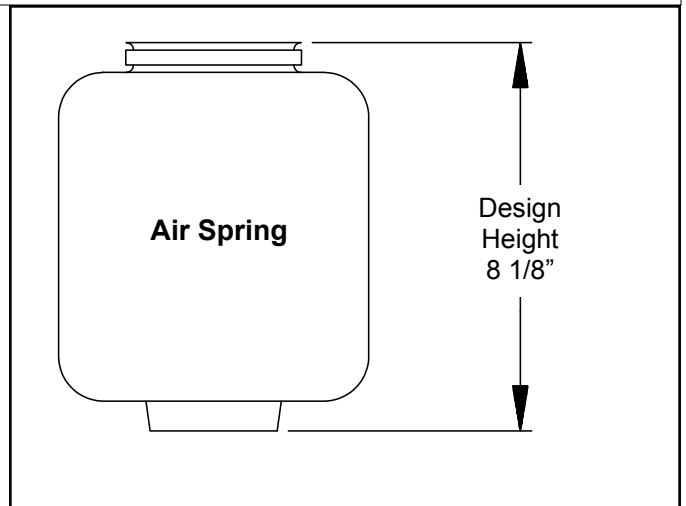
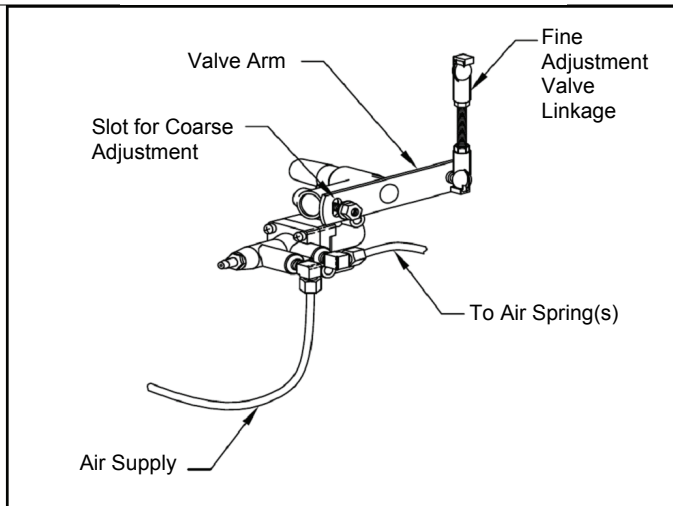
WARNING: FOR SAFETY PURPOSES THE CABMATE MUST BE SUPPLIED FROM A PRESSURE PROTECTED CIRCUIT. IN THE EVENT OF AN AIR LEAK IN THE CAB SUSPENSION, FAILURE TO PROVIDE A PRESSURE PROTECTED CIRCUIT MAY CAUSE LOSS OF AIR PRESSURE TO VITAL SYSTEMS ON THE VEHICLE.



WARNING: LOSS OR APPLICATION OF AIR PRESSURE TO CABMATE WILL CAUSE SUDDEN MOVEMENT OF THE CAB. PRIOR TO INSTALLING OR PERFORMING ANY MAINTENANCE, BLOCK UP THE CABMATE TO PREVENT THE POSSIBILITY OF INJURY.

HEIGHT ADJUSTMENTS

Measure the design height of the air spring(s). The height should be 8 1/8 inches ± 1/16. To change the height, disconnect one end of the valve linkage and adjust accordingly. Tighten the lock nuts on the valve linkage. The valve arm has a slot which will allow for coarse adjustment also. (See diagram below.)



MAINTENANCE

CABMATES need no lubrication and little maintenance. The following components should be checked at the time the truck is being serviced. However, immediate corrective action should be taken if a serious malfunction occurs.

COMPONENT	POSSIBLE PROBLEM	CORRECTIVE ACTION	TORQUE
Airlines	Air leaks	Replace airline	Compression Nut Hand Tight + 1 Turn
Fittings	Air leaks	Remove fitting and apply fresh joint compound. Reinstall fitting, but Do Not Overtighten. Do not use teflon tape.	Threaded into: Metal Plastic 15 Hand Tight Ft. Lbs. + 1 Turn
Air Springs	A. Improper height B. Air leakage	A. Adjust valve linkage to maintain proper air spring height. B. Replace air spring.	Size Metal Plastic 3/8 25 Ft. Lbs 4 Ft. Lbs 1/2 28 Ft. Lbs 10 Ft. Lbs 3/4 30 Ft. Lbs 10 Ft. Lbs
Height Control Valve (1)	A. Air leakage from joint between valve halves. B. Air springs will not inflate when weight is added to the cab. C. Air spring will not deflate when weight is removed from the cab.	A. Tighten 4 Phillips head screws. B. Replace valve. C. Replace valve.	30 In. Lbs. 1/4 Mount Fasteners 10 Ft. Lbs.
Shock Absorber	Insufficient dampening effect	Replace shocks	45 Ft. Lbs.
Lateral Control Rod	A. Loose nuts on lateral control rod bolts B. Worn bushings	A. Tighten securely to clamp the inner sleeve. B. Replace lateral control rod.	40 Ft. Lbs.

IMPORTANT: Periodically check the tightness of all fasteners.

(1) Note: If you attempt to disassemble or adjust fittings on the height control valve, it will void your warranty. Contact Link Manufacturing for assistance.

110425
CV450F