

Cabmate

ford

freightliner

gmc

international

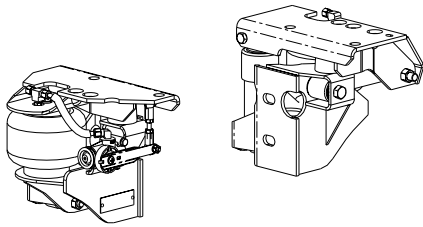
kenworth

mack
marmon

peterbilt

sterling

volvo
western star

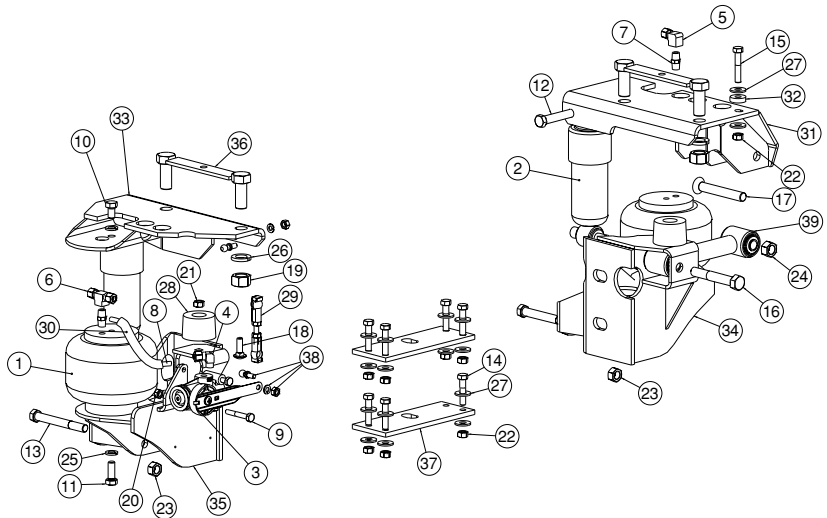
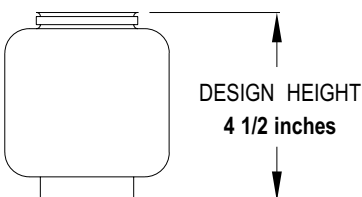


**CABMATE MODEL
FRTAS64-A**
2912-E000 AFTERMARKET
2912-D000 FACTORY

FITS: Most 64 inch Able Body sleepers installed on FLD112 and FLD120 Freightliner Series conventional tractors, **MFG'D AFTER August 1993**. It replaces the original rear sleeper mount, Freightliner part no. A22-38412. **IMPORTANT:** This unit may not work on trucks with 23" shimmed fuel tanks. Contact Link to insure proper installation.

Wt: 41 lbs. Wt. Added: 26 lbs.
Installation Times: 3-4 hours

NOTES:



PARTS LIST

1	1102-0022	SPRING-AIR2
2	1201-1044	SHOCK ABSORBER2
3	1350-0111	ASSEMBLY-HEIGHT CONTROL VALVE1
4	1302-1105	ELBOW, 1/4 TB 1/8 M-NPT1
5	1302-1131	ELBOW, 1/4 TB 1/8 F-NPT1
6	1302-1150	BRANCH TEE, 1/4 TB 1/8 F-NPT1
7	1302-2064	HEX NIPPLE, 1/4 TB 1/8 M-NPT2
8	1302-0090	0.250 AIRLINE4.8'
9	1401-0814	1/4 X 1 3/4 UNC HEX CAP SCREW (GRADE 5)2
10	1401-1205	3/8 X 5/8 UNC HEX CAP SCREW (GRADE 5)2
11	1401-1208	3/8 X 1 UNC HEX CAP SCREW (GRADE 5)2
12	1403-1428	7/16 X 3 1/2 UNF HEX CAP SCREW (GRADE 5)2
13	1403-1430	7/16 X 3 3/4 UNF HEX CAP SCREW (GRADE 5)2
14	1404-1012	5/16 X 1 1/2 UNF HEX CAP SCREW (GRADE 8)7
15	1404-1014	5/16 X 1 3/4 UNF HEX CAP SCREW (GRADE 8)1
16	1404-1626	1/2 X 3 1/4 UNF HEX CAP SCREW (GRADE 8)1
17	1420-1628	1/2 X 3 1/2 UNF SOC FLAT CSK HD CAP SCREW1
18	1435-1008	5/16 X 1 UNC RND HD SQ NK BOLT (GRADE 5)2
19	1470-2000	5/8 UNC HEX NUT (GRADE B)4
20	1476-0800	1/4 UNC HEX CENTER LOCK NUT (GRADE B)2
21	1476-1000	5/16 UNC HEX CENTER LOCK NUT (GRADE B)2
22	1477-1001	5/16 UNF HEX TOP LOCK NUT (GRADE C)8
23	1477-1400	7/16 UNF HEX CENTER LOCK NUT (GRADE B)4
24	1477-1601	1/2 UNF HEX TOP LOCK NUT (GRADE C)2
25	1485-1200	3/8 LOCK WASHER4
26	1485-2000	5/8 LOCK WASHER4
27	1487-1000	5/16 TYPE A PLAIN WASHER16
28	1500-0071	BUMPER-JOUNCE, 1.252
29	1500-0237	LINKAGE-VALVE, HEIGHT CONTROL (2.88)1
30	1500-0435	CORRUGATED LOOM0.8'
31	2912-1000	UNIT TOP-DRIVER1
32	2912-1008	SPACER-MOUNT1
33	2912-2000	UNIT TOP-PASSENGER1
34	2912-3000	UNIT BOTTOM-DRIVER1
35	2912-4100	UNIT BOTTOM-PASSENGER1
36	2912-5000	MOUNT-FASTENER STRAP2
37	2912-5002	PLATE-MOUNT, AFTERMARKET2
38	2991-0026	KIT-PIVOT BALL2
39	2993-2019	LATERAL CONTROL ROD1
NS	1350-0000	PRESSURE PROTECTION KIT1