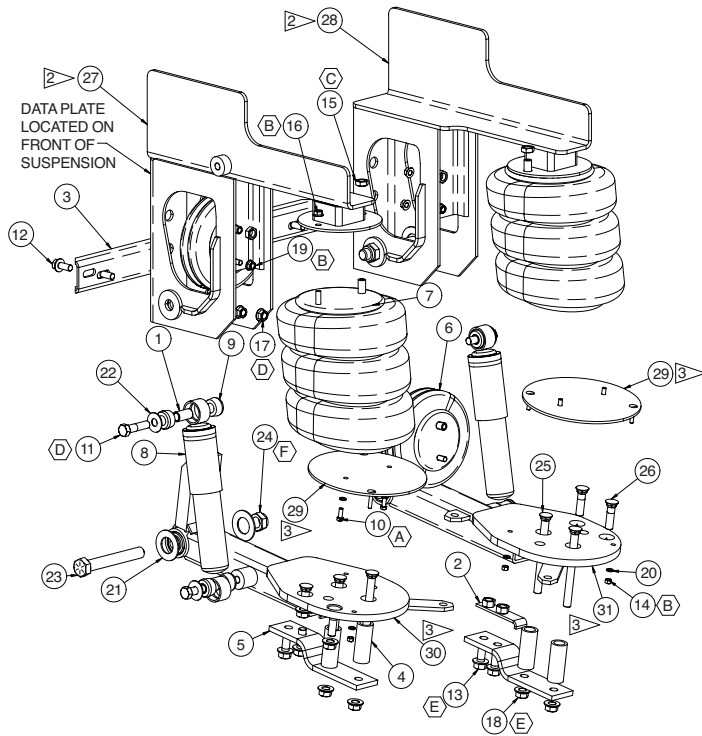


# MODEL 6002 - 13.2K C-ARM SELF-STEER

11" - 13" Ride Height



ITEM	PART NO	PART DESCRIPTION	QTY
1	80000003	BUSHING-SHOCK, STEEL .....	4
2	80000005	NUT-STRAP ASSEMBLY .....	2
3	80000025	CHANNEL-CROSSMEMBER.....	1
4	80000032	SPACER-MOUNT, AXLE .....	4
5	80000043	STRAP-MOUNT, AXLE .....	2
6	11030002	SPRING-AIR .....	2
7	11030003	SPRING-AIR .....	2
8	12100005	SHOCK ABSORBER .....	2
9	12100028	BUSHING, SHOCK, POLY .....	8
10	140B1208	3/8 X 1 UNC HEX CAP SCREW, OIL&PHOS (GR 8).....	4
11	140B2424	3/4 X 3 UNC HEX CAP SCREW, OIL&PHOS (GR 8).....	4
12	141A2012	5/8 X 1 1/2 UNC FL BOLT, OIL&PHOS, (GR 8).....	4
13	141A2416	3/4 X 2 UNC FLANGE BOLT, OIL&PHOS, (GRADE 8).....	4
14	14701200	3/8 UNC HEX NUT (GRADE B) .....	4
15	14752402	3/4 UNF HEX JAM NUT, OIL&PHOS .....	4
16	14801600	1/2 UNC HEX SERRATED FL NUT.....	6
17	14802004	5/8 UNC TOP LOCK FL NUT, OIL&PHOS .....	4
18	14802404	3/4 UNC TOP LOCK FL NUT, OIL&PHOS .....	8
19	14811600	1/2 UNF HEX SERRATED FL NUT .....	2
20	14851200	3/8 LOCK WASHER .....	8
21	14910002	THRUST WASHER .....	4
22	14916401	3/4 USS PLAIN WASHER.....	4
23	15060003	1 1/8 X 8 UNC HEX CAP SCR, (GRADE 8).....	2
24	15060005	1 1/8 UNC HEX TOP LOCK NUT, COLLAR STYLE.....	2
25	15060305	3/4 X 8.50 UNC PLOW HEAD BOLT .....	4
26	15060308	3/4 X 3.00 UNC PLOW HEAD BOLT .....	4
27	810A0023	BRACKET-6002 WELDMNT (LH FLUSH W/SB).....	1
28	810A0033	BRACKET-6002 WELDMNT (RH FLUSH W/SB) .....	1
29	820A0008	PLATE-AIR SPRING .....	2
30	820A1130	ARM-SUSPENSION (LCPBSSA).....	1
31	820A2146	ARM-SUSPENSION (RCXBSSA) .....	1
-	84001001	BUSHING.....	2

## LINK PART NUMBERS:

- 8A000334
- 8A000339
- 8A000340
- 8A000350
- 8A000372
- 8A000382
- 8A000383
- 8A000389
- 8A000606

## IMPORTANT NOTES:

- 1) WHEN REPLACING BUSHINGS, THE WEAR WASHER, BOLT AND NUT MUST BE REPLACED AS WELL

### 2) DATE/SERIAL NO. 00130001

PRIOR TO DATE	AFTER DATE	JULIAN DAY CODE YEAR
PART NO. 810A0720	PART NO. 810A0023 BRKT (LH)	
810A0820	810A0033 BRKT (RH)	

### 3) DATE/SERIAL NO. 00306001

PRIOR TO DATE	AFTER DATE	JULIAN DAY CODE YEAR
PART NO. 820A2126	PART NO. 820A2146 SUS ARM (RH)	
820A1110	820A1130 SUS ARM (LH)	

PART NO 820A0008 WAS NOT INCLUDED WITH THIS SUSPENSION PRIOR TO THE DATE CODE NOTED

- 4) WHEN ORDERING NEW SUSP ARMS (820A2146 OR 820A1130), PART NO 820A0008 MUST BE ORDERED AS WELL

- A) 15-20 FT-LBS
- B) 20-30 FT-LBS
- C) 40-50 FT-LBS
- D) 185-235 FT-LBS
- E) 325-420 FT-LBS
- F) 750-1000 FT-LBS

- 5) STEERING STABILIZER KIT 800A0020 MAY BE NEEDED.

