

Link® | **Chassis
Suspensions**

ULTRARIDE®
MEDIUM DUTY SUSPENSION

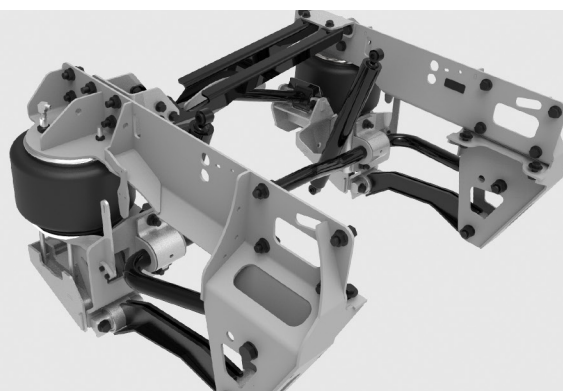
- + PREMIUM **RIDE**
- + ENHANCED **FLEXIBILITY**
- + INCREASE **STABILITY**
- + ELECTRONIC **AIR KIT**



driven to *outperform*®

LINK® UltraRide®

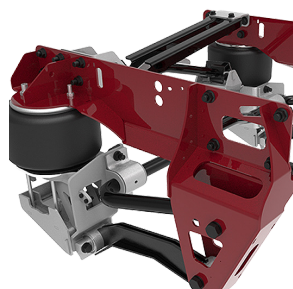
Chassis Air Suspension



Premium Ride Package

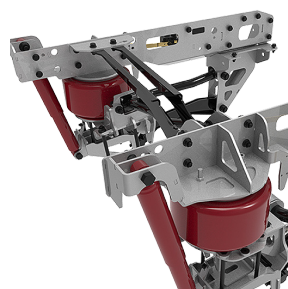
UltraRide® has been the chassis air suspension system of choice for manufacturers seeking to improve the ride and handling of light and medium duty vehicles. UltraRide is a total conversion suspension that replaces a standard leaf spring suspension system. The air suspension provides increased operator and passenger comfort, ease of access and overall safety. With an additional cross member and adjustable height sensor, UltraRide ensures proper alignment, increased stability, and reduced frame stress across multiple applications.

The UltraRide features two modes of operation. The Ambulance mode includes a system enable signal. This prevents the suspension from kneeling when the vehicle is in gear. When this input is active, the suspension can kneel. When this input is inactive, the suspension cannot kneel and will recover to normal height. The Tower-Hauler mode ignores the system enable signal and allows the vehicle to kneel even if the vehicle is moving giving you options for different suspension applications.



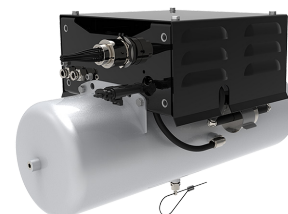
ROBUST FRAME BRACKETS

The UltraRide frame brackets increase durability and reduce frame stress for longer service life. The designed geometry of the front hanger and air spring brackets also combine for increased frame strength.



TAILORED AIR SPRINGS & REAR SHOCKS

Tuned ride shocks are positioned at the rear of the axle for optimum roll stability. The heavy-duty air springs offer low natural frequency for optimum ride qualities loaded or unloaded.



ELECTRONIC AIR KIT

The electronic air kit speeds up recovery time for quicker takeoff. The system filters out normal road oscillations and unwanted height adjustments during hard braking to reduce air consumption.

HEIGHT CONTROL SYSTEM

The height control system maintains optimum ride height loaded or unloaded. The easy-to-adjust height sensors will not collect metal that may adversely affect height readings.

OPTIONAL ON-BOARD DIAGNOSTICS

Monitor proper ride height and lift with the user-friendly diagnostic software. By adding blink codes to the warning lights, drivers are able to diagnose error and fault codes without connecting to a PC.

2-STAGE COMPACT COMPRESSOR

The compressor operates at a lower temperature to help improve performance. The 3.5 gallon tank allows faster dump and recovery cycling; enabling multiply cycles in a short amount of time.

SPECIFICATION

	FORD	GMC	DODGE
WEIGHT (BASE UNIT)	350 - 375 LBS	260 - 360 LBS	450 LBS
RIDE HEIGHT	14.08 - 17.6 IN	16.33 - 21.5 IN	17.8 IN
CAPACITY	9K - 13.5K	11K - 19K	12K - 13.5K

Note: The base suspension is only available to order to OEMs. Link Manufacturing Ltd. will support limited parts to suspension units out in the field.

Specialty
Engineered
Suspensions