

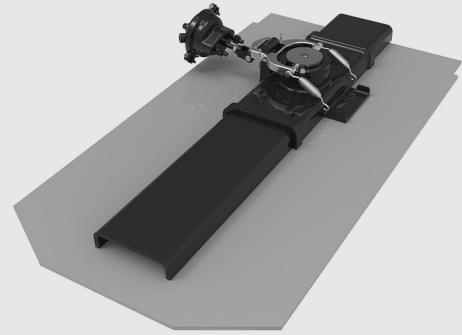
Link Specialty
Products

EASY SLIDER[®]
SLIDING KINGPIN SYSTEM



driven to *outperform*[®]

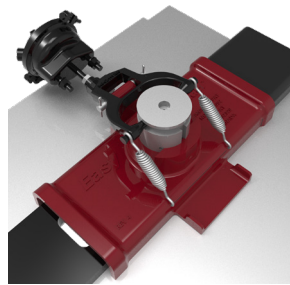
LINK® Easy Slider® Sliding Kingpin System



Weight Distribution Made Easy

Our Easy Slider® Sliding Kingpin system allows drivers to adjust the trailer kingpin position within 8" increments on a fully loaded, connected trailer without having to disconnect the kingpin from the fifth wheel. By varying the overall length of the tractor/trailer unit, the axle weight distribution can be optimized for particular load configurations and road conditions, thereby maximizing payloads and improving traction. Minimizing the distance between the tractor and trailer also allows for tighter turn radius within constricted maneuvering situations. Easy Slider can be coupled with any tractor or trailer.

Easy Slider eliminates the limitations of a sliding fifth wheel, the inflexibility of a fixed kingpin setup and the high maintenance of a sliding upper plate system. The simplicity of the Easy Slider kingpin system ensures you remain in compliance with various bridge laws and DOT regulations as well as improving traction and aerodynamics. Unlike a sliding fifth wheel, which only shifts weight down from the drive axles to the steering axle, the Easy Slider kingpin system shifts the weight from the drive axles to the trailer axles and vice-versa. With the various DOT regulations, the Easy Slider is a must to quickly change your axle loads.

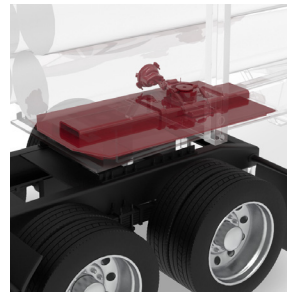


CHANGE KINGPIN SETBACK IN SECONDS

Easy Slider allows the kingpin position to be adjusted on an empty or fully loaded trailer by 8" increments. Adjusting the kingpin setback can occur within 90 seconds.

UNLIKE A SLIDING FIFTH WHEEL

A sliding fifth wheel will shift the trailer weight from the drive axles to the steering axle. With Easy Slider the driver can redistribute the load over the drive axle without overloading the steer axle.



CHANGING THE KINGPIN POSITION

When adjusting the trailer, the loading valve will lift the lock pin and the tractor can move freely. Once in position the loading valve will release and the locking pin will engage.

SUPER B TRAIN CONFIGURATIONS

Super B train configurations in cross-border applications can use Easy Slider to shift the length, weight and turn radius between drive axles and middle tri-axles.



MAXIMIZE PAYLOAD WITHIN LENGTH LIMITS

The Kingpin adjustment allows tractors to comply with federal bridge span formulas and to carry up to 5,000 lbs. of additional payload between the US and Canada.

IMPROVE TRACTION

By adjusting the trailer weight over the drive axle, the tractor can be optimized for particular load configurations and road conditions, thereby improving traction and driver comfort.

SPECIFICATION

	32" SLIDER	48" SLIDER	80" SLIDER
KINGPIN TRAVEL	32 INCHES	48 INCHES	80 INCHES
POSITIONS	4 POSITIONS	6 POSITIONS	10 POSITIONS
KINGPIN	SAE J700	SAE J700	SAE J700

Note: The kingpin moves in 8" position increments. Custom sliders lengths between 32" and 80" are available upon request.

PRODUCT CODES

EASY SLIDER (32" SLIDER)	ES-032
EASY SLIDER (48" SLIDER)	ES-048
EASY SLIDER (80" SLIDER)	ES-080