

- + SWIFT **MOUNT**
- + SWIFT **RESPONSE**
- + SWIFT **DELIVERY**
- + SWIFT **INSTALL**
- + SWIFT **RESULTS**

driven to *outperform*®





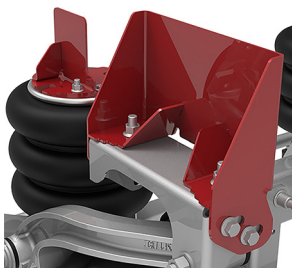
# STEERABLE AUXILIARY SUSPENSION

The family of steerable auxiliary suspensions enhance the installation, performance and uptime of commercial vocational vehicles. Featuring Swift Mount brackets, Link's steerable auxiliary suspensions use patented interchangeable ride height brackets to save you up to 3-5 hours of installation time.

Four sets of interchangeable brackets can be used to mount any current steerable Link auxiliary suspension. Link's steerable lift axles are available in 8K, 10K, 13.5K (drum or disc brake option), and 20K capacities.

The integrated air kit system saves on valuable frame rail space and installation time. The bulkhead air kit uses push-to-connect fittings which centralizes multiple air outlets into one location. The air tank is stored behind the cross member for clearance and protection.

Engineered to Link's exact standards for reliability and durability, all steerable auxiliary suspensions are equipped with cast lift arms and Link-KOAT® - a self-healing metal treatment to provide corrosion resistance and rust protection.



## SWIFT MOUNT BRACKETS

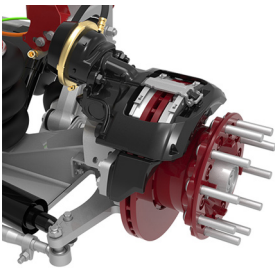
Swift mount brackets reduce installation time by up to 20%; install any Link lift axle with 4 sets of brackets.

## SWIFT ALIGNMENT TECHNOLOGY

Flush alignment edges on main mounting brackets serve as a visual aid to simplify the installation process.

## FENDER BRACKET ATTACHMENTS

Optional fender brackets don't require hub removal and allow optional reverse lock.



## DISC OR DRUM BRAKE OPTION ON 13.5K

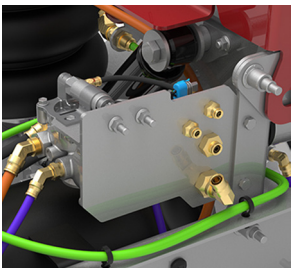
We've simplified maintenance and inventory requirements utilizing standard wheel end and brake components.

## RUGGED CAST LIFT ARMS

The cast lift arms improve lift, reduce wear on bushings and minimizes interference issues for certain applications.

## RIDE SHOCK ATTACHMENT OPTION

Improve the overall durability and reduce axle bounce with optional ride shocks.



## BULKHEAD AIR KIT FITTINGS

The bulkhead air kit reduces overall installation time with push-to-connect fittings and centralizes multiple air outlets.

## COMPACT MOUNTING ENVELOPE

Save on valuable frame rail space with an industry competitive mounting envelope of 22".

STEERABLE	8K DRUM	10K DRUM	13.5K DRUM	13.5K DISC	20K DRUM
WEIGHT (BASE UNIT)	776 LBS	796 LBS	916 LBS	1,018 LBS	1,300 LBS
TRAVEL	12 INCHES	13 INCHES	13 INCHES	13 INCHES	12 INCHES
LIFT	9.5 INCHES	9.5 INCHES	9.5 INCHES	9.5 INCHES	9.5 INCHES
ENVELOPE	22 INCHES	22 INCHES	22 INCHES	22 INCHES	22.5 INCHES
RIDE HEIGHT	11-19.5 INCHES	11-19.5 INCHES	8-16.5 INCHES	8-16.5 INCHES	8-14.5 INCHES

**Note:** All the weights are for the base suspension with hubs and drums, but does not include frame bracket kits, air kits, wheels, or tires. The envelope is the measurement from the center of the spindle to the front edge of the front frame bracket with the suspension at the middle of the ride height.

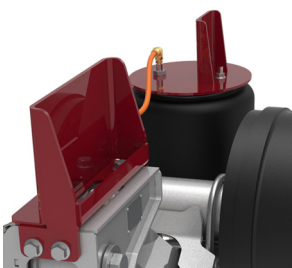


# NON-STEERABLE AUXILIARY SUSPENSION

Link's family of non-steerable auxiliary suspension provides distinct advantages in convenience and performance. Fast shipping, quick installation and responsive customer support, combined with the reliability and durability Link is known for, results in a lower overall cost of ownership.

The 20K non-steerable auxiliary suspension has proven its reliability for both on and off-highway applications. The suspension incorporates interchangeable ride height brackets to accommodate a wide range of ride heights for nearly any truck. The suspension has tag and pusher position options available. The pre-plumbed integrated air kit combined with the compact mounting envelope saves on valuable frame rail space and installation time.

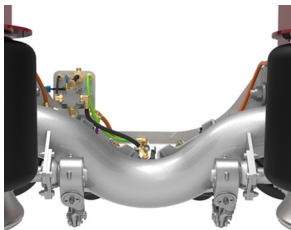
The unique design of the model 5500 allows 11" to 15" of ride height and 15" of travel for applications encountering uneven terrain. The direct arm to axle connection increases stability and reduces maintenance. The suspension is available with 15" or 20" wheels for maximum lift and clearance.



**SWIFT MOUNT BRACKETS**  
Swift mount brackets reduce installation time by up to 20%; install any Link lift axle with 4 sets of brackets.

**PUSHER OR TAG POSITION**  
Four interchangeable ride height frame brackets allow 7" to 15" of ride height and 15" of travel.

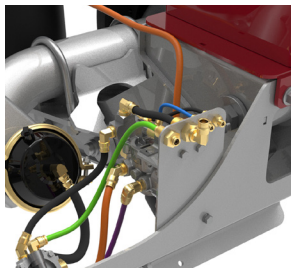
**77.5" STRAIGHT AXLE AVAILABLE**  
For specialty applications requiring a wider axle track (6" wider than standard track).



**STRAIGHT OR DROP CENTER AXLES**  
For maximum lift and clearance, the 20K is available with 6" or 9" drop center axles; straight axles are also available.

**STANDARD OR LONG STUD OPTION**  
Two stud lengths allow for steel and aluminum wheels (single or dual).

**TRAILER MOUNTS AVAILABLE**  
Trailer mounts are available for 15" to 19.5" ride heights.



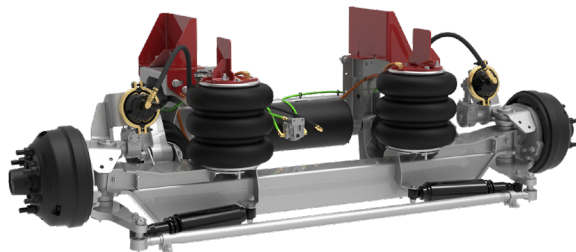
**BULKHEAD AIR KIT FITTINGS**  
The bulkhead air kit allows for push-to-connect fittings and centralizes multiple air outlets.

**COMPACT MOUNTING ENVELOPE**  
Save on valuable frame rail space with an industry competitive mounting envelope of 24.6".

NON-STEERABLE	13.2K DRUM	17K DRUM	20K DRUM
WEIGHT (BASE UNIT)	1,145 LBS	1,175 LBS	1,129 LBS
TRAVEL	15 INCHES	15 INCHES	10 INCHES
LIFT	8 - 12 INCHES	8-12 INCHES	6 INCHES
ENVELOPE	31.5 INCHES	31.5 INCHES	24.6 INCHES
RIDE HEIGHT	11-15 INCHES	11-15 INCHES	7-15.5 INCHES

**Note:** All the weights are for the base suspension with hubs and drums, but does not include frame bracket kits, air kits, wheels, or tires. The envelope is the measurement from the center of the spindle to the front edge of the front frame bracket with the suspension at the middle of the ride height.





## 8K STEERABLE

8,000 LB. CAPACITY (Includes Hub Piloted Hubs & Drums)

### STEP 1

#### Suspension Axle (Choose One)

- ☐ 8A000745 8K AUXILIARY SUSPENSION - INTEGRATED AIR (Pre-Plumbed, Includes Tank)
- ☐ 8A000744 8K AUXILIARY SUSPENSION - NON-INTEGRATED

### STEP 2

#### Frame Bracket Kits (Choose One)

- ☐ 8A000410 FRAME BRACKET KIT - 11" TO 13.5" RIDE HEIGHT
- ☐ 8A000411 FRAME BRACKET KIT - 13" TO 15.5" RIDE HEIGHT
- ☐ 8A000412 FRAME BRACKET KIT - 15" TO 17.5" RIDE HEIGHT
- ☐ 8A000413 FRAME BRACKET KIT - 17" TO 19.5" RIDE HEIGHT
- ☐ 8A000414 TALL FRAME BRACKET KIT - 11" TO 13.5" RIDE HEIGHT
- ☐ 8A000415 TALL FRAME BRACKET KIT - 13" TO 15.5" RIDE HEIGHT
- ☐ 8A000416 TALL FRAME BRACKET KIT - 15" TO 17.5" RIDE HEIGHT
- ☐ 8A000417 TALL FRAME BRACKET KIT - 17" TO 19.5" RIDE HEIGHT

### STEP 3

#### Air Control Modules (Choose One)

##### INTEGRATED

- ☐ 13501023 NON SEALED BOX – CONTROL MODULE (Use with 8A000745)
- ☐ 13501024 SEALED BOX – CONTROL MODULE (Use with 8A000745)

##### NON-INTEGRATED

- ☐ 13501025 NON SEALED BOX – CONTROL MODULE (Use with 8A000744)
- ☐ 13501026 SEALED BOX – CONTROL MODULE (Use with 8A000744)

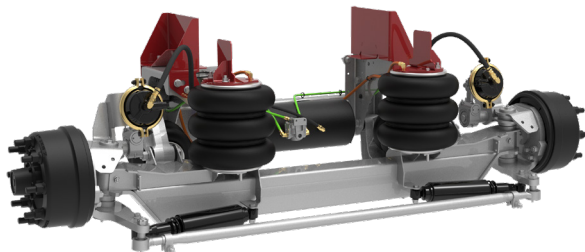
### OPTIONAL KITS

#### Kits Not Pre-Installed

- ☐ 800A0210 KIT - RIDE SHOCKS
- ☐ 800A0032 KIT - FASTENER (2" Bolts)
- ☐ 800A0305 KIT - FASTENER (2½" Bolts)
- ☐ 13501016 KIT - RATIO RELAY VALVE (Used with single drive suspensions)
- ☐ 800A0202 KIT - STEERING LOCK
- ☐ 13501027 KIT - AIR TANK
- ☐ 84002025 6 HOLE, HUB PILOTED, ALUMINUM WHEELS POLISHED

#### Fenders & Brackets

- ☐ 800A0201 FENDER BRACKET KIT (Not pre-installed – Shipped loose)
- ☐ 80002609 PAIR OF ALUMINUM FENDERS – 10" WIDE
- ☐ 80002610 PAIR OF STAINLESS STEEL FENDERS – 10" WIDE
- ☐ 80002605 PAIR OF POLY FENDERS – 12" WIDE (Low Profile)



## 10K STEERABLE

10,000 LB. CAPACITY (Includes Hub Piloted Hubs & Drums)

### STEP 1

#### Suspension Axle (Choose One)

- ☐ 8A000747 10K AUXILIARY SUSPENSION - INTEGRATED AIR (Pre-Plumbed, Includes Tank)
- ☐ 8A000746 10K AUXILIARY SUSPENSION - NON-INTEGRATED

### STEP 2

#### Frame Bracket Kits (Choose One)

- ☐ 8A000410 FRAME BRACKET KIT - 11" TO 13.5" RIDE HEIGHT
- ☐ 8A000411 FRAME BRACKET KIT - 13" TO 15.5" RIDE HEIGHT
- ☐ 8A000412 FRAME BRACKET KIT - 15" TO 17.5" RIDE HEIGHT
- ☐ 8A000413 FRAME BRACKET KIT - 17" TO 19.5" RIDE HEIGHT
- ☐ 8A000414 TALL FRAME BRACKET KIT - 11" TO 13.5" RIDE HEIGHT
- ☐ 8A000415 TALL FRAME BRACKET KIT - 13" TO 15.5" RIDE HEIGHT
- ☐ 8A000416 TALL FRAME BRACKET KIT - 15" TO 17.5" RIDE HEIGHT
- ☐ 8A000417 TALL FRAME BRACKET KIT - 17" TO 19.5" RIDE HEIGHT

### STEP 3

#### Air Control Modules (Choose One)

##### INTEGRATED

- ☐ 13501023 NON SEALED BOX – CONTROL MODULE (Use with 8A000747)
- ☐ 13501024 SEALED BOX – CONTROL MODULE (Use with 8A000747)

##### NON-INTEGRATED

- ☐ 13501025 NON SEALED BOX – CONTROL MODULE (Use with 8A000746)
- ☐ 13501026 SEALED BOX – CONTROL MODULE (Use with 8A000746)

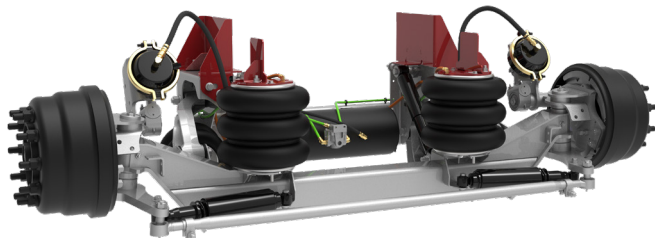
### OPTIONAL KITS

#### Kits Not Pre-Installed

- ☐ 800A0210 KIT - RIDE SHOCKS
- ☐ 800A0032 KIT - FASTENER (2" Bolts)
- ☐ 800A0305 KIT - FASTENER (2½" Bolts)
- ☐ 13501016 KIT - RATIO RELAY VALVE (Used with single drive suspensions)
- ☐ 800A0202 KIT - STEERING LOCK
- ☐ 13501027 KIT - AIR TANK

#### Fenders & Brackets

- ☐ 800A0201 FENDER BRACKET KIT (Not pre-installed – Shipped loose)
- ☐ 80002609 PAIR OF ALUMINUM FENDERS – 10" WIDE
- ☐ 80002610 PAIR OF STAINLESS STEEL FENDERS – 10" WIDE
- ☐ 80002605 PAIR OF POLY FENDERS – 12" WIDE (Low Profile)



## 13.5K STEERABLE

13,500 LB. CAPACITY (Includes Hub Piloted Hubs & Drums)  
**DRUM BRAKE OPTION**

### STEP 1

#### Suspension Axle (Choose One)

- ☐ 8A000749 13.5K AUXILIARY SUSPENSION – DRUM BRAKE INTEGRATED AIR (Pre-Plumbed, Includes Tank)
- ☐ 8A000748 13.5K AUXILIARY SUSPENSION – DRUM BRAKE NON-INTEGRATED

### STEP 2

#### Frame Bracket Kits (Choose One)

- ☐ 8A000410 FRAME BRACKET KIT - 8" TO 10.5" RIDE HEIGHT
- ☐ 8A000411 FRAME BRACKET KIT - 10" TO 12.5" RIDE HEIGHT
- ☐ 8A000412 FRAME BRACKET KIT - 12" TO 14.5" RIDE HEIGHT
- ☐ 8A000413 FRAME BRACKET KIT - 14" TO 16.5" RIDE HEIGHT
- ☐ 8A000414 TALL FRAME BRACKET KIT - 8" TO 10.5" RIDE HEIGHT
- ☐ 8A000415 TALL FRAME BRACKET KIT - 10" TO 12.5" RIDE HEIGHT
- ☐ 8A000416 TALL FRAME BRACKET KIT - 12" TO 14.5" RIDE HEIGHT
- ☐ 8A000417 TALL FRAME BRACKET KIT - 14" TO 16.5" RIDE HEIGHT

### STEP 3

#### Air Control Modules (Choose One)

##### INTEGRATED

- ☐ 13501023 NON SEALED BOX – CONTROL MODULE (Use with 8A000749)
- ☐ 13501024 SEALED BOX – CONTROL MODULE (Use with 8A000749)

##### NON-INTEGRATED

- ☐ 13501025 NON SEALED BOX – CONTROL MODULE (Use with 8A000748)
- ☐ 13501026 SEALED BOX – CONTROL MODULE (Use with 8A000748)

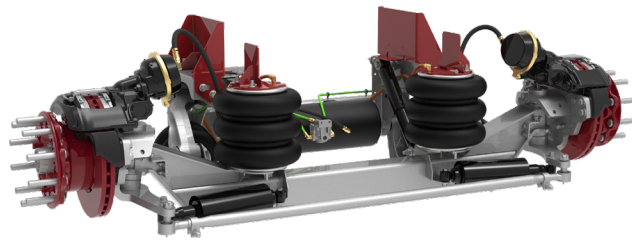
### OPTIONAL KITS

#### Kits Not Pre-Installed

- ☐ 800A0210 KIT - RIDE SHOCKS
- ☐ 800A0032 KIT - FASTENER (2" Bolts)
- ☐ 800A0305 KIT - FASTENER (2½" Bolts)
- ☐ 13501016 KIT - RATIO RELAY VALVE (Used with single drive suspensions)
- ☐ 800A0212 KIT - STEERING LOCK
- ☐ 13501027 KIT - AIR TANK

#### Fenders & Brackets

- ☐ 800A0206 FENDER BRACKET KIT – DRUM BRAKE (Not pre-installed – Shipped loose) (Use with 8A000748 or 8A000749)
- ☐ 80002601 PAIR OF ALUMINUM FENDERS – 12" WIDE (Low Profile)
- ☐ 80002602 PAIR OF STAINLESS STEEL FENDERS – 12" WIDE (Low Profile)
- ☐ 80002603 PAIR OF ALUMINUM FENDERS – 12" WIDE
- ☐ 80002604 PAIR OF STAINLESS STEEL FENDERS – 12" WIDE
- ☐ 80002605 PAIR OF POLY FENDERS – 12" WIDE (Low Profile)



## 13.5K STEERABLE

13,500 LB. CAPACITY (Includes Hub Piloted Hub/Rotor Assembly)  
**DISC BRAKE OPTION**

### STEP 1

#### Suspension Axle (Choose One)

- ☐ 8A000755 13.5K AUXILIARY SUSPENSION – DISC BRAKE INTEGRATED AIR (Pre-Plumbed, Includes Tank)
- ☐ 8A000754 13.5K AUXILIARY SUSPENSION – DISC BRAKE NON-INTEGRATED

### STEP 2

#### Frame Bracket Kits (Choose One)

- ☐ 8A000410 FRAME BRACKET KIT - 8" TO 10.5" RIDE HEIGHT
- ☐ 8A000411 FRAME BRACKET KIT - 10" TO 12.5" RIDE HEIGHT
- ☐ 8A000412 FRAME BRACKET KIT - 12" TO 14.5" RIDE HEIGHT
- ☐ 8A000413 FRAME BRACKET KIT - 14" TO 16.5" RIDE HEIGHT
- ☐ 8A000414 TALL FRAME BRACKET KIT - 8" TO 10.5" RIDE HEIGHT
- ☐ 8A000415 TALL FRAME BRACKET KIT - 10" TO 12.5" RIDE HEIGHT
- ☐ 8A000416 TALL FRAME BRACKET KIT - 12" TO 14.5" RIDE HEIGHT
- ☐ 8A000417 TALL FRAME BRACKET KIT - 14" TO 16.5" RIDE HEIGHT

### STEP 3

#### Air Control Modules (Choose One)

##### INTEGRATED

- ☐ 13501023 NON SEALED BOX – CONTROL MODULE (Use with 8A000755)
- ☐ 13501024 SEALED BOX – CONTROL MODULE (Use with 8A000755)

##### NON-INTEGRATED

- ☐ 13501025 NON SEALED BOX – CONTROL MODULE (Use with 8A000754)
- ☐ 13501026 SEALED BOX – CONTROL MODULE (Use with 8A000754)

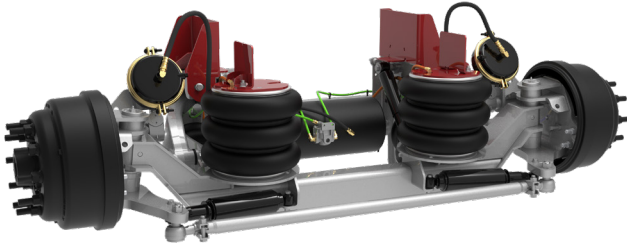
### OPTIONAL KITS

#### Kits Not Pre-Installed

- ☐ 800A0210 KIT - RIDE SHOCKS
- ☐ 800A0032 KIT - FASTENER (2" Bolts)
- ☐ 800A0305 KIT - FASTENER (2½" Bolts)
- ☐ 13501016 KIT - RATIO RELAY VALVE (Used with single drive suspensions)
- ☐ 800A0212 KIT - STEERING LOCK
- ☐ 13501027 KIT - AIR TANK

#### Fenders & Brackets

- ☐ 800A0211 FENDER BRACKET KIT – AIR DISC BRAKE (Not pre-installed – Shipped loose) (Use with 8A000754 or 8A000755)
- ☐ 80002601 PAIR OF ALUMINUM FENDERS – 12" WIDE (Low Profile)
- ☐ 80002602 PAIR OF STAINLESS STEEL FENDERS – 12" WIDE (Low Profile)
- ☐ 80002603 PAIR OF ALUMINUM FENDERS – 12" WIDE
- ☐ 80002604 PAIR OF STAINLESS STEEL FENDERS – 12" WIDE
- ☐ 80002605 PAIR OF POLY FENDERS – 12" WIDE (Low Profile)



## 20K STEERABLE

20,000 LB. CAPACITY (Includes Hub Piloted Hubs & Drums)

### STEP 1

#### Suspension Axle (Choose One)

- ☐ 8A000852 20K AUXILIARY SUSPENSION - INTEGRATED AIR (Pre-Plumbed, Includes Tank)
- ☐ 8A000850 20K AUXILIARY SUSPENSION - NON-INTEGRATED

### STEP 2

#### Frame Bracket Kits (Choose One)

- ☐ 8A000420 FRAME BRACKET KIT - 8" TO 10.5" RIDE HEIGHT
- ☐ 8A000421 FRAME BRACKET KIT - 10" TO 12.5" RIDE HEIGHT
- ☐ 8A000422 FRAME BRACKET KIT - 12" TO 14.5" RIDE HEIGHT
- ☐ 8A000424 TALL FRAME BRACKET KIT - 8" TO 10.5" RIDE HEIGHT
- ☐ 8A000425 TALL FRAME BRACKET KIT - 10" TO 12.5" RIDE HEIGHT
- ☐ 8A000426 TALL FRAME BRACKET KIT - 12" TO 14.5" RIDE HEIGHT

### STEP 3

#### Air Control Modules (Choose One)

##### INTEGRATED

- ☐ 13501023 NON SEALED BOX - CONTROL MODULE (Use with 8A000852)
- ☐ 13501024 SEALED BOX - CONTROL MODULE (Use with 8A000852)

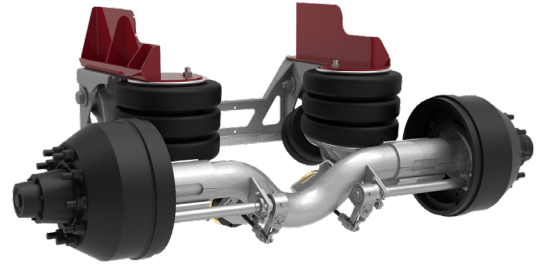
##### NON-INTEGRATED

- ☐ 13501025 NON SEALED BOX - CONTROL MODULE (Use with 8A000850)
- ☐ 13501026 SEALED BOX - CONTROL MODULE (Use with 8A000850)

### OPTIONAL KITS

#### Kits Not Pre-Installed

- ☐ 800A0032 KIT - FASTENER (2" Bolts)
- ☐ 800A0305 KIT - FASTENER (2½" Bolts)
- ☐ 13501016 KIT - RATIO RELAY VALVE (Used with single drive suspensions)
- ☐ 800A0214 KIT - STEERING LOCK
- ☐ 13501029 KIT - AIR TANK



## 13.2K NON-STEERABLE

13,200 LB. CAPACITY

### STEP 1

#### Suspension Axle (Choose One)

- ☐ 8A000051 5500UD - DROP CENTER AXLE FOR 20" WHEELS
- ☐ 8A000052 5500US - STRAIGHT AXLE FOR 20" WHEELS
- ☐ 8A000053 5500US15 - STRAIGHT AXLE FOR 15" WHEELS
- ☐ 8A000054 5500US - STRAIGHT AXLE 77.5" TRUCK

### STEP 2

#### Wheel End Kits (Choose One)

- ☐ 840A0132 STANDARD STUD HUB PILOTED HUBS & DRUMS
- ☐ 840A0133 HUB PILOTED HUBS AND DRUMS (Aluminum dual)
- ☐ 840A0137 PILOTED HUBS AND DRUMS FOR 15" OR 17.5" WHEELS

#### Frame Bracket Kits (Choose One)

- ☐ 800A0045 TRUCK MOUNT - 11.0" TO 15.0" RIDE HEIGHT

### STEP 3

#### Air Control Modules (Choose One)

##### ELECTRIC OVER AIR

- ☐ 13501004 STANDARD AIR CONTROL KIT - ELECTRIC/AIR
- ☐ 13501025 NON SEALED BOX - CONTROL MODULE
- ☐ 13501026 SEALED BOX - CONTROL MODULE

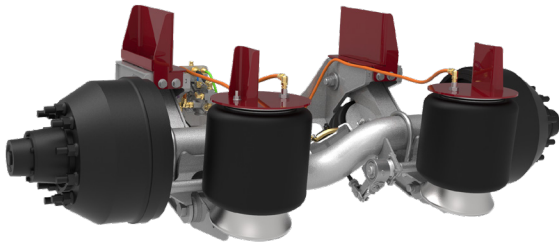
##### AIR OVER AIR

- ☐ 800A0098 AIR OVER AIR CONTROL KIT

### OPTIONAL KITS

#### Kits Not Pre-Installed

- ☐ 800A0002 KIT - AIR TANK (1244 in³)
- ☐ 800A0014 KIT - INSTALLATION (Use w/Air Control Kits 13501004 or 800A0098)
- ☐ 800A0032 KIT - FASTENER (2" Bolts)
- ☐ 800A0305 KIT - FASTENER (2½" Bolts)
- ☐ 13501016 KIT - RATIO RELAY VALVE (Used with single drive suspensions)
- ☐ 84002120 SERVICE KIT - DUST SHIELD KIT
- ☐ 800A0044 17,000 LB CAPACITY UPGRADE KIT (Not applicable for use with 8A000051)



## 20K NON-STEERABLE

20,000 LB. CAPACITY (Includes Hub Piloted Hubs & Drums)  
**INTEGRATED AIR** (Pre-Plumbed)

### STEP 1

#### Suspension Axle (Choose One)

- ☐ 8A000902 STRAIGHT AXLE – Standard Stud Length
- ☐ 8A000903 STRAIGHT AXLE – Long Stud Length
- ☐ 8A000906 6" DROP CENTER AXLE – Standard Stud Length
- ☐ 8A000907 6" DROP CENTER AXLE – Long Stud Length
- ☐ 8A001002 6" DROP CENTER AXLE – Long Stud Length (Includes Air Tank)
- ☐ 8A000910 9" DROP CENTER AXLE – Standard Stud Length
- ☐ 8A000911 9" DROP CENTER AXLE – Long Stud Length
- ☐ 8A000914 77.5" STRAIGHT AXLE – Standard Stud Length
- ☐ 8A000915 77.5" STRAIGHT AXLE – Long Stud Length

### STEP 2

#### Frame Bracket Kits (Choose One)

- ☐ 8A000460 TRUCK MOUNT 7.0" TO 9.5" RIDE HEIGHT
- ☐ 8A000461 TRUCK MOUNT 9.0" TO 11.5" RIDE HEIGHT
- ☐ 8A000462 TRUCK MOUNT 11.0" TO 13.5" RIDE HEIGHT
- ☐ 8A000463 TRUCK MOUNT 13.0" TO 15.5" RIDE HEIGHT
- ☐ 8A000464 TRAILER MOUNT 15.0" TO 17.5" RIDE HEIGHT
- ☐ 8A000465 TRAILER MOUNT 17.0" TO 19.5" RIDE HEIGHT
- ☐ 8A000685 TALL TRUCK MOUNT 7.0" TO 9.5" RIDE HEIGHT
- ☐ 8A000686 TALL TRUCK MOUNT 9.0" TO 11.5" RIDE HEIGHT
- ☐ 8A000687 TALL TRUCK MOUNT 11" TO 13.5" RIDE HEIGHT
- ☐ 8A000688 TALL TRUCK MOUNT 13" TO 15.5" RIDE HEIGHT

### STEP 3

#### Air Control Modules (Choose One)

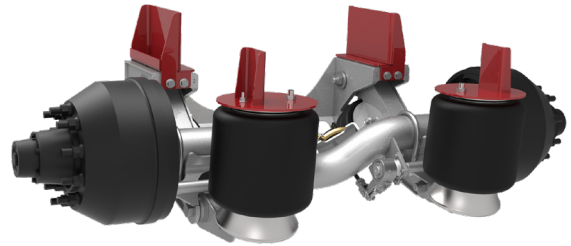
##### INTEGRATED

- ☐ 13501023 NON SEALED BOX – CONTROL MODULE
- ☐ 13501024 SEALED BOX – CONTROL MODULE

### OPTIONAL KITS

#### Kits Not Pre-Installed

- ☐ 800A0630 KIT - AIR TANK
- ☐ 800A0252 KIT - BRAKE CHAMBER - TYPE 30
- ☐ 800A0114 PARKING BRAKE OPTION (Spring Brake Upgrade)
- ☐ 84002120 SERVICE KIT - DUST SHIELD KIT
- ☐ 800A0032 KIT - FASTENER (2" Bolts)
- ☐ 800A0305 KIT - FASTENER (2½" Bolts)
- ☐ 13501016 KIT - RATIO RELAY VALVE (Used with single drive suspensions)



## 20K NON-STEERABLE

20,000 LB. CAPACITY (Includes Hub Piloted Hubs & Drums)  
**NON-INTEGRATED**

### STEP 1

#### Suspension Axle (Choose One)

- ☐ 8A000900 STRAIGHT AXLE – Standard Stud Length
- ☐ 8A000901 STRAIGHT AXLE – Long Stud Length
- ☐ 8A000904 6" DROP CENTER AXLE – Standard Stud Length
- ☐ 8A000905 6" DROP CENTER AXLE – Long Stud Length
- ☐ 8A000908 9" DROP CENTER AXLE – Standard Stud Length
- ☐ 8A000909 9" DROP CENTER AXLE – Long Stud Length
- ☐ 8A000912 77.5" STRAIGHT AXLE – Standard Stud Length
- ☐ 8A000913 77.5" STRAIGHT AXLE – Long Stud Length
- ☐ 8A000457 SUSPENSION ONLY

### STEP 2

#### Frame Bracket Kits (Choose One)

- ☐ 8A000460 TRUCK MOUNT 7.0" TO 9.5" RIDE HEIGHT
- ☐ 8A000461 TRUCK MOUNT 9.0" TO 11.5" RIDE HEIGHT
- ☐ 8A000462 TRUCK MOUNT 11.0" TO 13.5" RIDE HEIGHT
- ☐ 8A000463 TRUCK MOUNT 13.0" TO 15.5" RIDE HEIGHT
- ☐ 8A000464 TRAILER MOUNT 15.0" TO 17.5" RIDE HEIGHT
- ☐ 8A000465 TRAILER MOUNT 17.0" TO 19.5" RIDE HEIGHT
- ☐ 8A000685 TALL TRUCK MOUNT 7.0" TO 9.5" RIDE HEIGHT
- ☐ 8A000686 TALL TRUCK MOUNT 9.0" TO 11.5" RIDE HEIGHT
- ☐ 8A000687 TALL TRUCK MOUNT 11" TO 13.5" RIDE HEIGHT
- ☐ 8A000688 TALL TRUCK MOUNT 13" TO 15.5" RIDE HEIGHT

### STEP 3

#### Air Control Modules (Choose One)

##### NON-INTEGRATED

- ☐ 13501004 AIR CONTROL KIT - ELECTRIC/AIR
- ☐ 13501025 NON SEALED BOX – CONTROL MODULE
- ☐ 13501026 SEALED BOX – CONTROL MODULE

##### AIR OVER AIR

- ☐ 800A0098 AIR OVER AIR CONTROL KIT

### OPTIONAL KITS

#### Kits Not Pre-Installed

- ☐ 800A0630 KIT - AIR TANK
- ☐ 800A0014 KIT - INSTALLATION  
(Use w/Air Control Kits 13501004 or 800A0098)
- ☐ 800A0252 KIT - BRAKE CHAMBER - TYPE 30
- ☐ 800A0114 PARKING BRAKE OPTION (Spring Brake Upgrade)
- ☐ 84002120 SERVICE KIT - DUST SHIELD KIT
- ☐ 800A0032 KIT - FASTENER (2" Bolts)
- ☐ 800A0305 KIT - FASTENER (2½" Bolts)
- ☐ 13501016 KIT - RATIO RELAY VALVE (Used with single drive suspensions)

# LINK® | Auxiliary Suspensions

## ORDERING INFORMATION

To expedite the ordering process, you will need the following information about your specific application

<b>STEP 1</b>	<ol style="list-style-type: none"> <li><b>1. Location</b> <ul style="list-style-type: none"> <li><input type="checkbox"/> Pusher (Ahead of Drive Axle)</li> <li><input type="checkbox"/> Tag (Behind Drive Axle)</li> </ul> </li> <li><b>2. Axle Type</b> <ul style="list-style-type: none"> <li><input type="checkbox"/> Non-Steerable</li> <li><input type="checkbox"/> Steerable</li> </ul> </li> <li><b>3. Capacity</b> <ul style="list-style-type: none"> <li><input type="checkbox"/> 8K      <input type="checkbox"/> 13.5K</li> <li><input type="checkbox"/> 10K     <input type="checkbox"/> 17K</li> <li><input type="checkbox"/> 13.2K   <input type="checkbox"/> 20K</li> </ul> </li> <li><b>4. Drive Axle Specs</b> <ul style="list-style-type: none"> <li><input type="checkbox"/> Mechanical Suspension</li> <li><input type="checkbox"/> Air Suspension</li> <li><input type="checkbox"/> Single Axle</li> <li><input type="checkbox"/> Tandem Axle</li> </ul> </li> <li><b>5. Wheel Configuration - Non-Steerable Only</b> <ul style="list-style-type: none"> <li><input type="checkbox"/> Dual - Steel      <input type="checkbox"/> Dual - Steel and Aluminum</li> <li><input type="checkbox"/> Dual - Aluminum   <input type="checkbox"/> Single - Steel or Aluminum</li> </ul> </li> </ol>
<b>STEP 2</b>	<ol style="list-style-type: none"> <li><b>6. Loaded Frame Height</b> (bottom of frame to level ground)</li> <li><b>7. Loaded Tire Radius</b> (tire size for auxiliary lift axle)</li> <li><b>8. Driveshaft Location - Pusher Axle Only</b> (distance from the bottom of frame to the bottom of the driveshaft, where the suspension crosses the drive shaft.)</li> <li><b>9. Ride Height</b> (loaded frame height minus loaded tire radius)</li> </ol>
<b>STEP 3</b>	<ol style="list-style-type: none"> <li><b>10. Integrated Or Non-Integrated Air Control</b> <ul style="list-style-type: none"> <li><input type="checkbox"/> Integrated (Pre-Plumbed)   <input type="checkbox"/> Non-Integrated</li> </ul> </li> <li><b>Air Controls Inside Or Outside The Cab</b> <ul style="list-style-type: none"> <li><input type="checkbox"/> Inside (Non-Sealed Box)   <input type="checkbox"/> Outside (Sealed Box)</li> </ul> </li> </ol>

Specialty  
Engineered  
Suspensions

Link Manufacturing, Ltd.  
223 15th St NE, Sioux Center, IA 51250

[www.linkmfg.com](http://www.linkmfg.com)

Phone +1 800 222 6283 | [info@linkmfg.com](mailto:info@linkmfg.com) | [linkmfg.com](http://linkmfg.com)