

INSTALLATION DIAGRAM

H01501 — RETROFIT KIT

IMPORTANT

THIS HEIGHT CONTROL VALVE (HCV) KIT CONTAINS 3 PLUMBING DIAGRAMMS.
PLEASE REVIEW YOUR APPLICATIONS TO SELECT THE PROPER PLUMBING AND KIT OPTION.

1501HCV APPLICATION

HCV WITH EXTERNAL DUMP
MOUNTED TO FRAME RAIL BRACKET

PLUMBING SCHEMATIC

H16680
SHEET 2

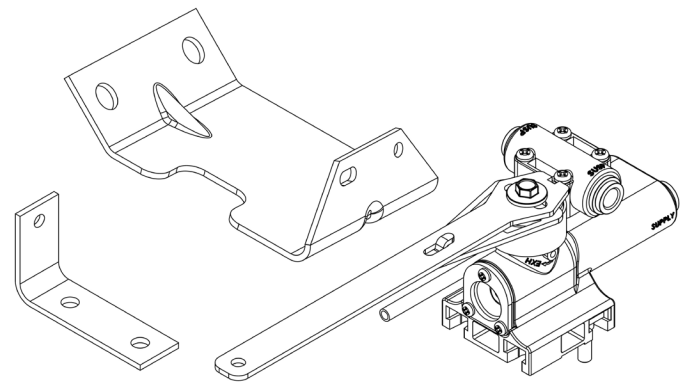
HCV WITH INTEGRAL DUMP
MOUNTED TO FRAME RAIL BRACKET

H16680
SHEET 3

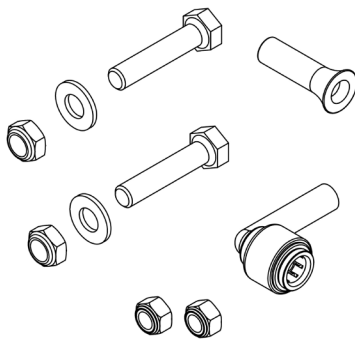
HCV WITH NON DUMP
MOUNTED TO FRAME RAIL BRACKET

H16680
SHEET 4

* CONSULT OWNERS MANUAL FOR RIDE HEIGHT
SPECIFICATIONS.

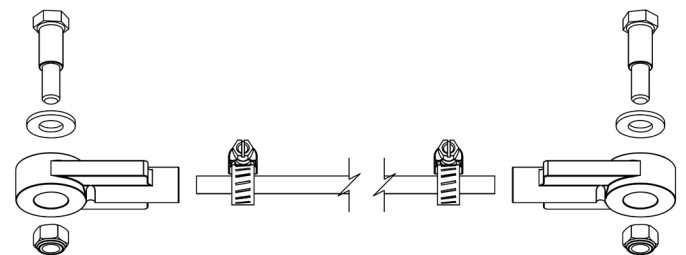


PART NO	PART DESCRIPTION	QTY
H01501-7	HEIGHT CONTROL VALVE	1
H16678	BRACKET.....	1
H16679	BRACKET.....	1



PARTS BAG HPB1501-3

PART NO	PART DESCRIPTION	QTY
H13964	1/4-20 LOCKNUT	2
H14407	5/16 WASHER	2
H15573	5/16-18 BOLT	2
H15574	5/16-18 NUT	2
H16393	3/8 PTC ELBOW	1
H15313	3/8 PTC PLUG	1



PARTS BAG HPB450-15

PART NO	PART DESCRIPTION	QTY
H13964	LOCKNUT	2
H14406	LINK SCREW	2
H14407	WASHER.....	2
H14408	ROD END.....	2
H14418	CLAMP	2
H14413-33	ROD.....	1

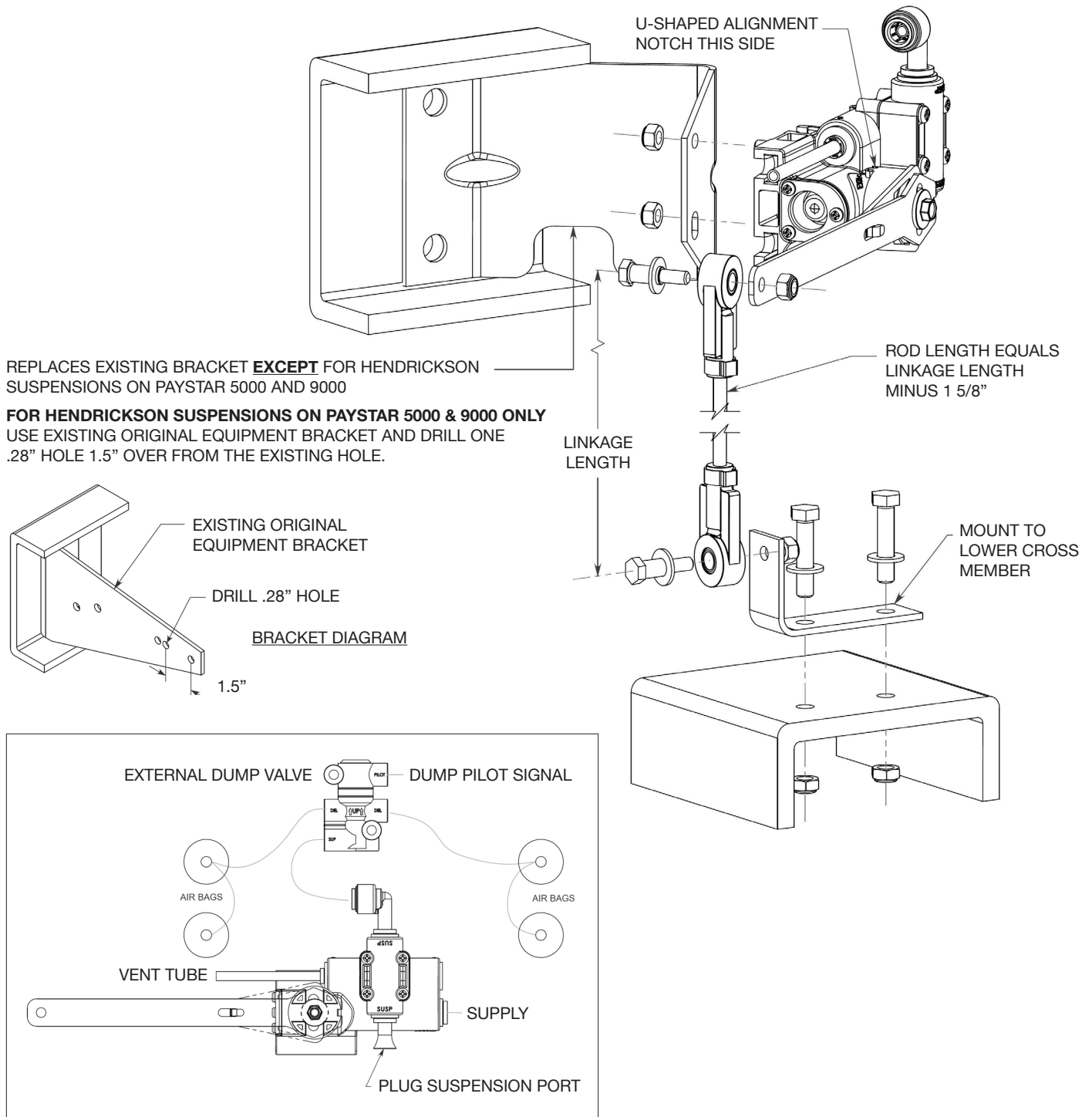
INSTALLATION DIAGRAM

H01501 — WITH EXTERNAL DUMP VALVE

IMPORTANT

THIS CONFIGURATION IS USED WHEN ORIGINAL HEIGHT CONTROL VALVE IS MOUNTED TO EXISTING FRAME RAIL BRACKET.

* CONSULT OWNERS MANUAL FOR RIDE HEIGHT SPECIFICATIONS.



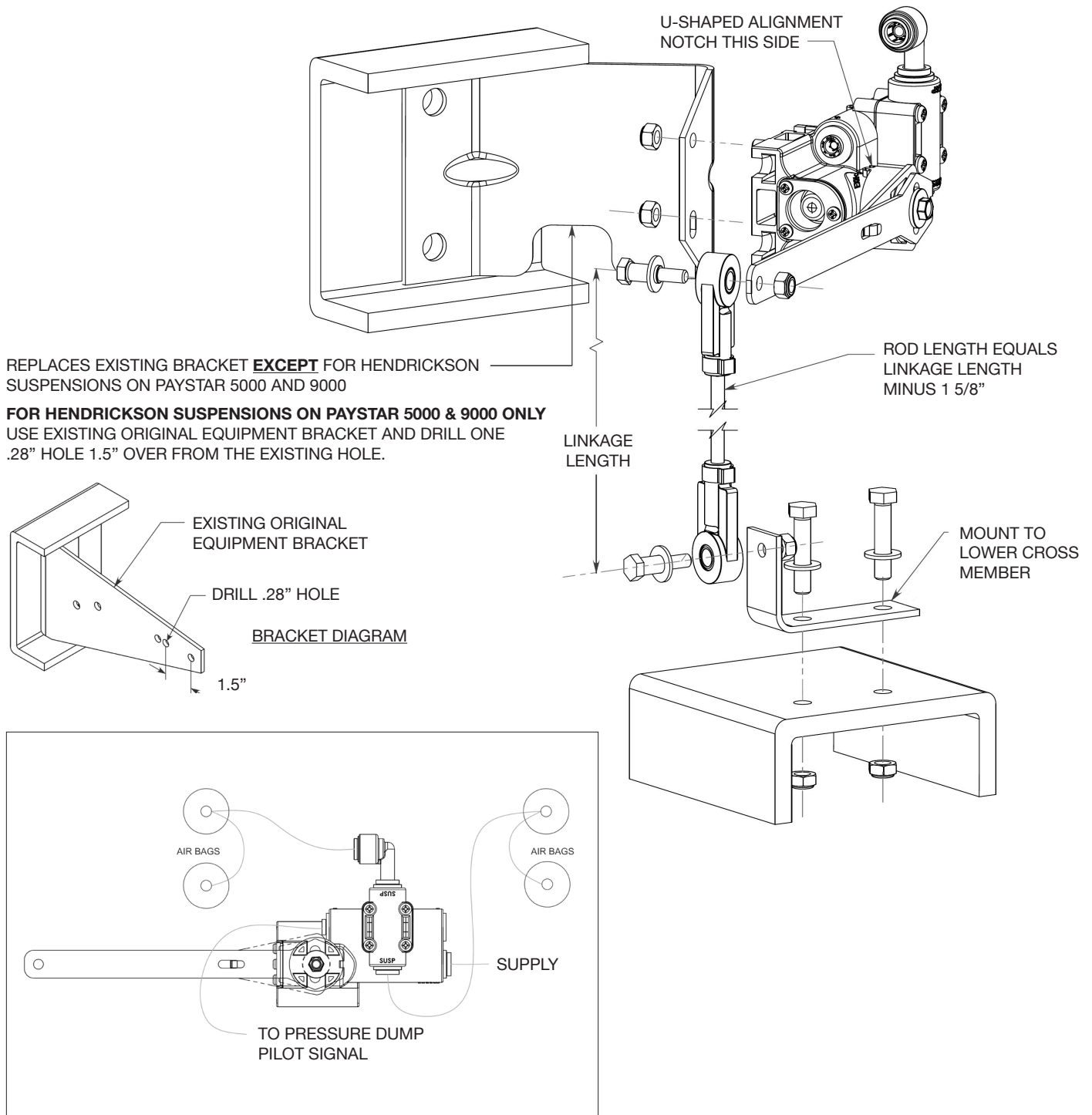
INSTALLATION DIAGRAM

H01501 — WITH INTEGRAL DUMP SYSTEM

IMPORTANT

THIS CONFIGURATION IS USED WHEN ORIGINAL HEIGHT CONTROL VALVE IS MOUNTED TO EXISTING FRAME RAIL BRACKET.

* CONSULT OWNERS MANUAL FOR RIDE HEIGHT SPECIFICATIONS.



INSTALLATION DIAGRAM

H01501 — WITH NON-DUMP SYSTEM

IMPORTANT

THIS CONFIGURATION IS USED WHEN ORIGINAL HEIGHT CONTROL VALVE IS MOUNTED TO EXISTING FRAME RAIL BRACKET.

* CONSULT OWNERS MANUAL FOR RIDE HEIGHT SPECIFICATIONS.

