

INSTALLATION DIAGRAM

H00500FS — FREIGHTLINER RETROFIT KIT

IMPORTANT

THIS HEIGHT CONTROL VALVE (HCV) KIT CONTAINS 3 PLUMBING DIAGRAMMS.
PLEASE REVIEW YOUR APPLICATIONS TO SELECT THE PROPER PLUMBING AND KIT OPTION.

500HCV APPLICATION

HCV WITH EXTERNAL DUMP
MOUNTED ON REAR CROSS MEMBER

H15584
SHEET 2

HCV WITH INTEGRAL DUMP
MOUNTED UNDER FIFTH WHEEL

H15584
SHEET 3

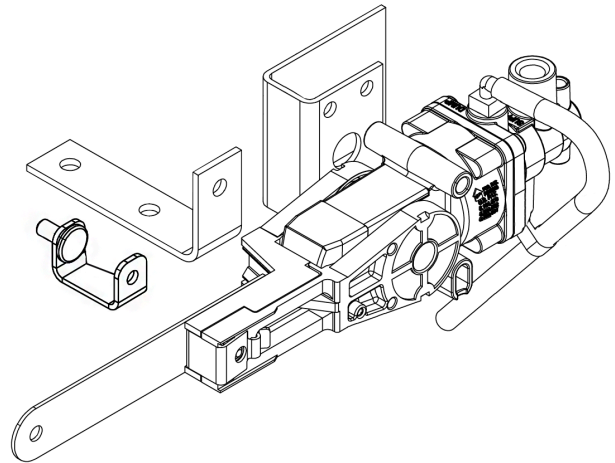
HCV WITH NON DUMP
MOUNTED ON REAR CROSS MEMBER

H15584
SHEET 4

HCV WITH NON DUMP
MOUNTED UNDER FIFTH WHEEL

H15584
SHEET 5

PLUMBING SCHEMATIC

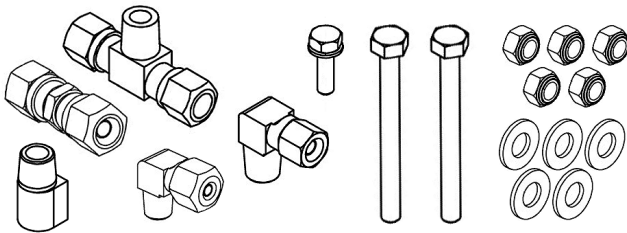


* KIT CONTAINS EXTRA PARTS THAT MAY NOT
BE USED FOR EACH APPLICATIONS

* CONSULT OWNERS MANUAL FOR RIDE HEIGHT
SPECIFICATIONS.

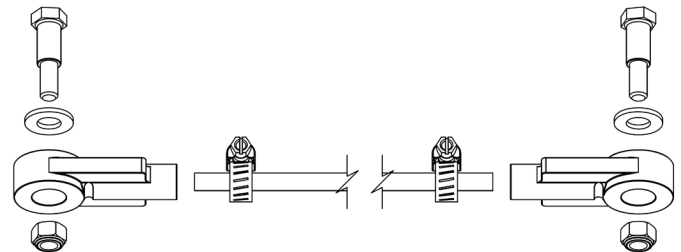
H00500FS

PART NO	PART DESCRIPTION	QTY
H00500-63	HEIGHT CONTROL VALVE	1
HPB500-16	PARTS BAG	1
HPB450-15	PARTS BAG	1
H15526-2	3/8 TUBING, 24"	1
H15621	BRACKET	1
H15623	LINKAGE BRACKET	1
H15568	BRACKET	1



HPB500-16

PART NO	PART DESCRIPTION	QTY
H13404	WASHER	5
H13964	1/4-20 LOCKNUT	5
H14231	1/8 NPT ELBOW	1
H15388	1/4-20 x 2.75 BOLT	2
H15539	TEE FITTING	1
H15543	1/4-20 x .875 BOLT	1
H15574	5/16-18 LOCKNUT	1
H15582	1/4 NPT ELBOW	1
H15585	STREET ELBOW	1



HPB450-15

PART NO	PART DESCRIPTION	QTY
H13964	LOCKNUT	2
H14406	LINK SCREW	2
H14407	WASHER	2
H14408	ROD END	2
H14418	CLAMP	2
H14413-33	ROD	1



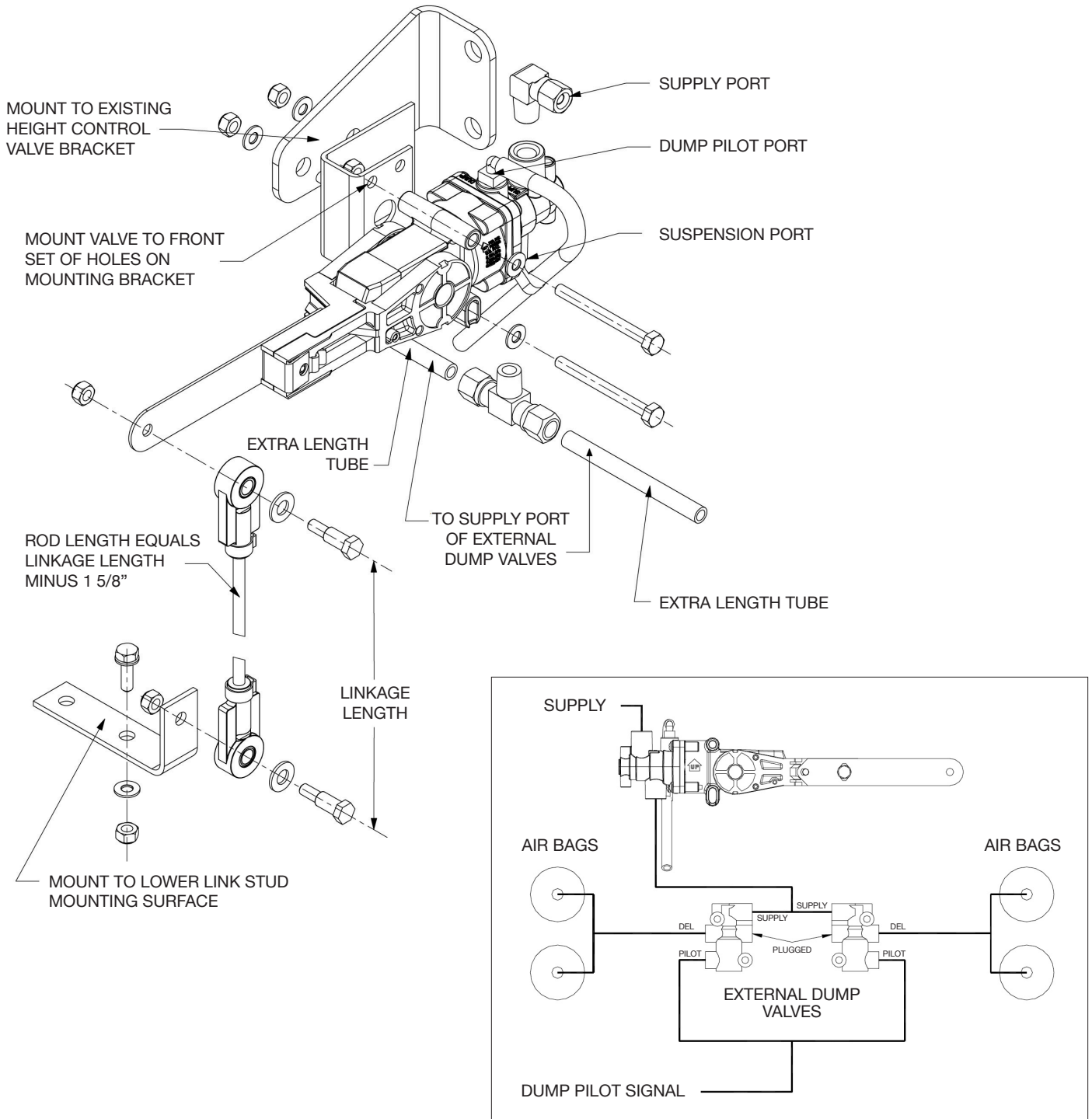
INSTALLATION DIAGRAM

H00500FS — WITH EXTERNAL DUMP VALVE

IMPORTANT

THIS CONFIGURATION IS USED WHEN ORIGINAL HEIGHT CONTROL VALVE IS MOUNTED ON REAR SUSPENSION CROSS MEMBER.

* CONSULT OWNERS MANUAL FOR RIDE HEIGHT SPECIFICATIONS.



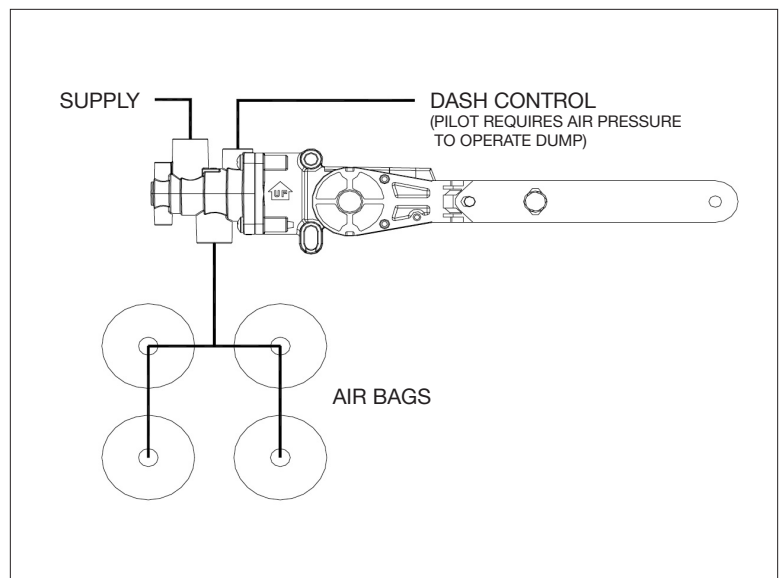
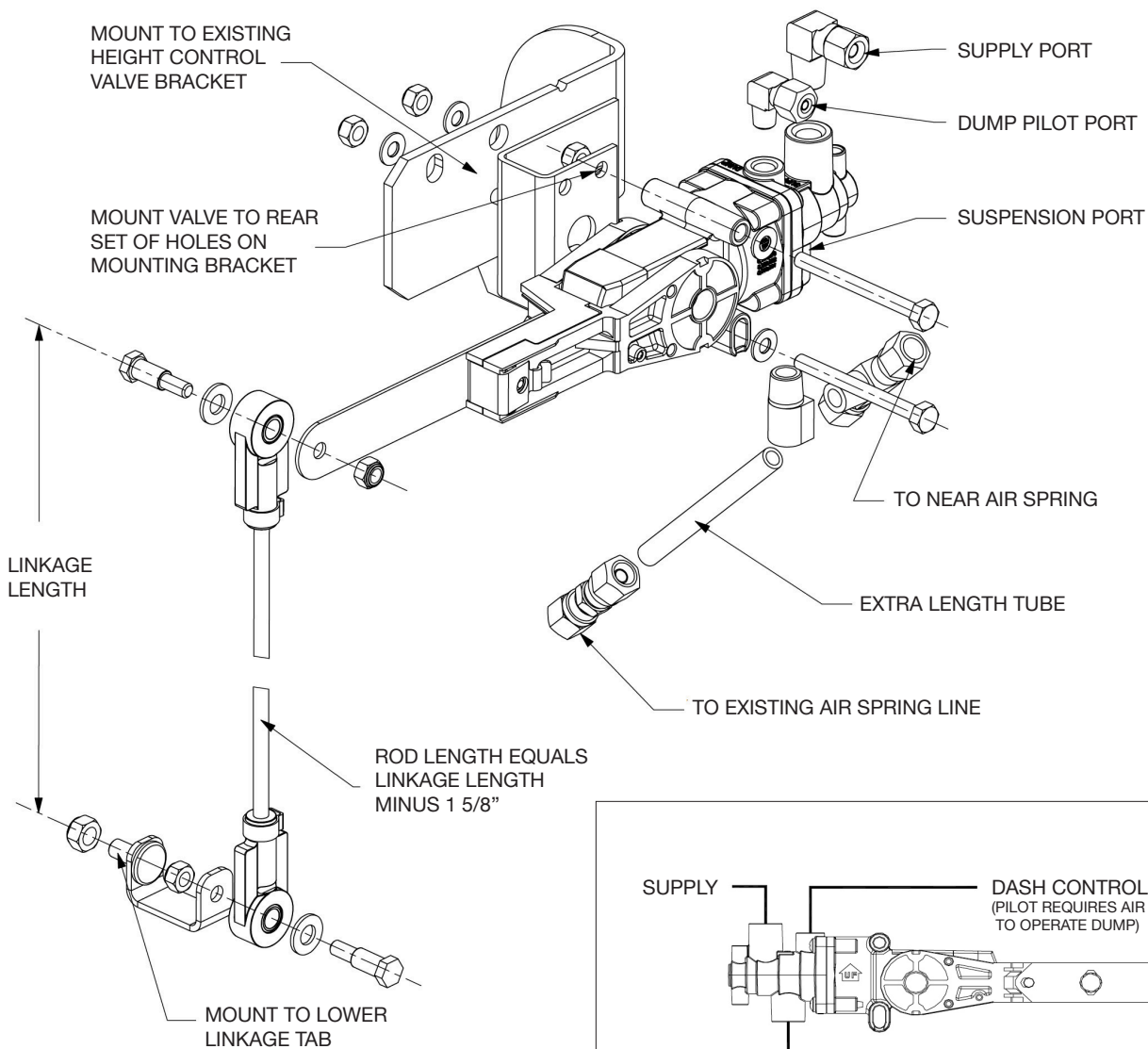
INSTALLATION DIAGRAM

H00500FS — WITH INTEGRAL DUMP SYSTEM

IMPORTANT

THIS CONFIGURATION IS USED WHEN ORIGINAL HEIGHT CONTROL VALVE IS MOUNTED UNDER FIFTH WHEEL

* CONSULT OWNERS MANUAL FOR RIDE HEIGHT SPECIFICATIONS.



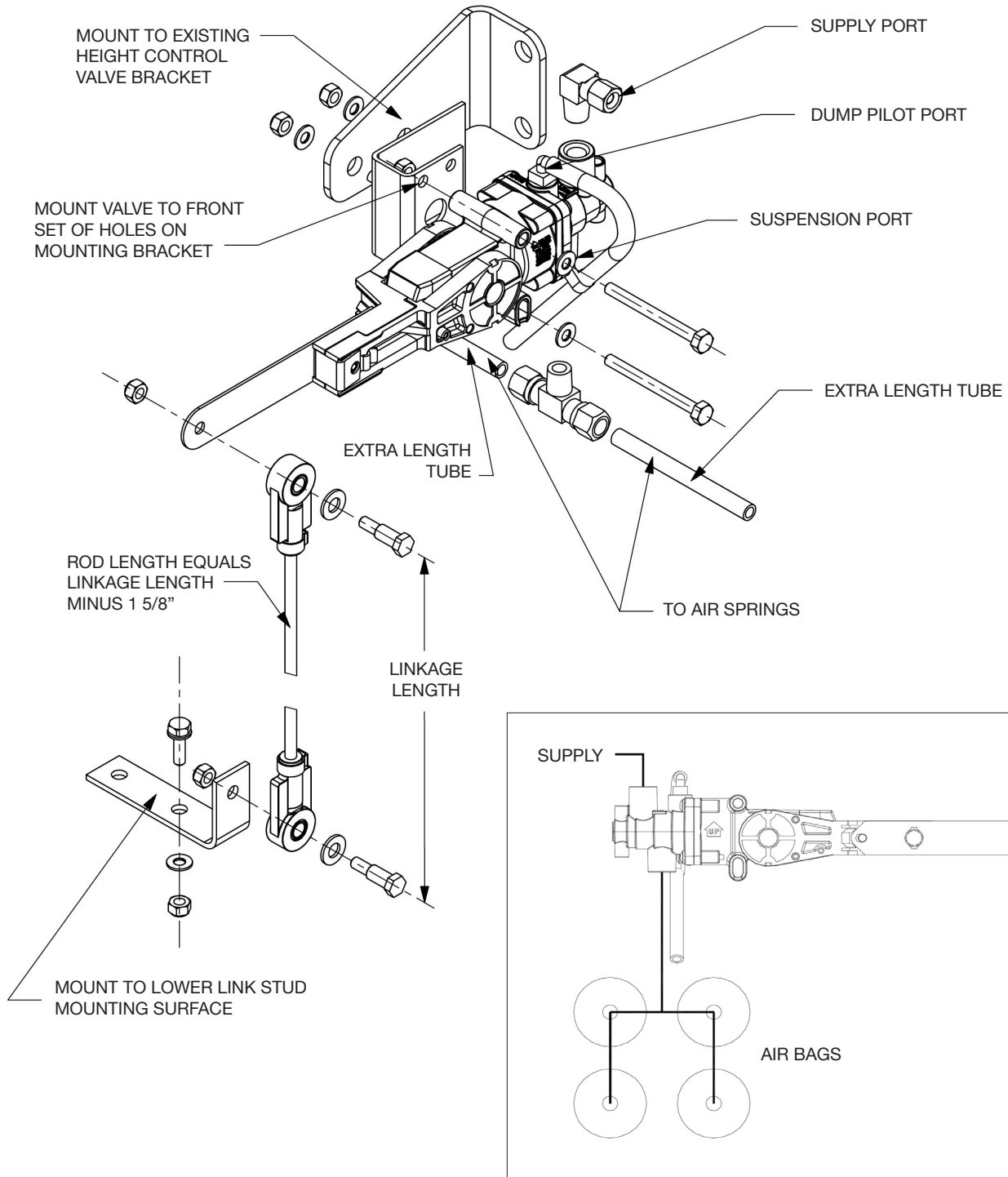
INSTALLATION DIAGRAM

H00500FS — WITH NON-DUMP SYSTEM

IMPORTANT

THIS CONFIGURATION IS USED WHEN ORIGINAL HEIGHT CONTROL VALVE IS MOUNTED ON REAR CROSS MEMBER

* CONSULT OWNERS MANUAL FOR RIDE HEIGHT SPECIFICATIONS.



INSTALLATION DIAGRAM

H00500FS — WITH NON-DUMP SYSTEM

IMPORTANT

THIS CONFIGURATION IS USED WHEN ORIGINAL HEIGHT CONTROL VALVE IS MOUNTED UNDER FIFTH WHEEL

* CONSULT OWNERS MANUAL FOR RIDE HEIGHT SPECIFICATIONS.

