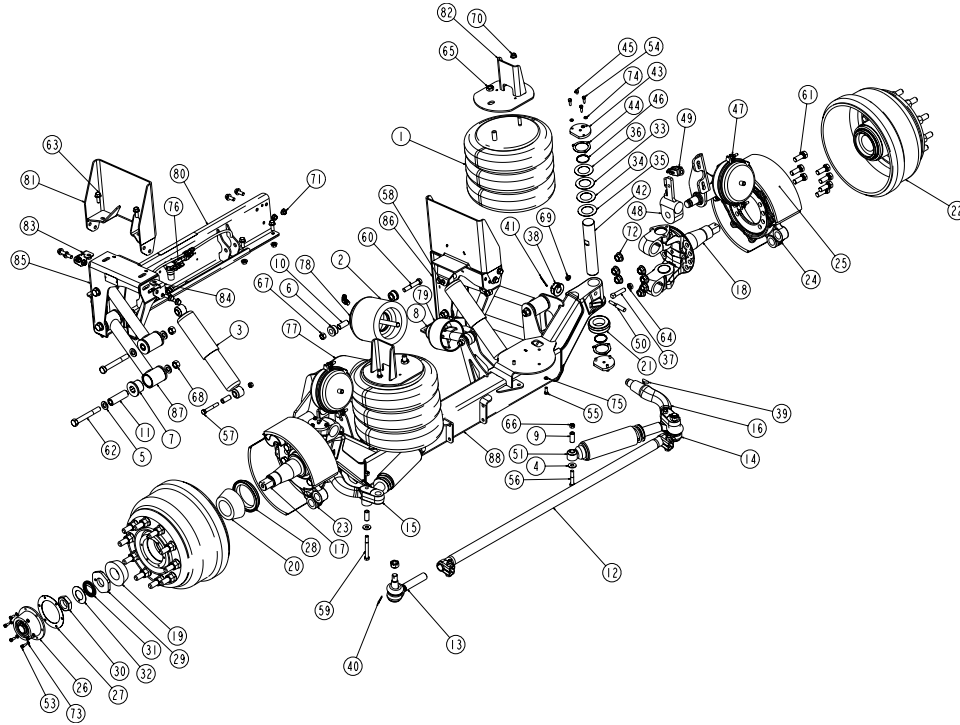


DURALIFT II 20K SELF STEER

Link Part Number: 8A000680 - Non-Current



REPLACEMENT KIT PART NUMBERS:

ARM BUSHING KIT:
800A0133

KING PIN KIT:
84001768

IMPORTANT NOTES:
1. MULTIPLE OPTIONS
EXIST—CALL FOR
DETAILS.

#	PART NO	PART DESCRIPTION	QTY	#	PART NO	PART DESCRIPTION	QTY
1	11030001	SPRING-AIR	2	45	84001764	FITTING-GREASE.....	4
2	11030060	SLEEVE-AIR.....	2	46	84001765	SEAL-KNUCKLE.....	4
3	12100011	SHOCK ABSORBER	2	47	84001767	CHAMBER-BRAKE.....	2
4	14871600	1/2 TYPE A PLAIN WASHER.....	4	48	84001777	SLACK ADJUSTER - AUTO	2
5	14882402	3/4 HARDENED WASHER, ZINC PLATED.....	16	49	84001779	ASSEMBLY-CLEVIS, GUNITE	2
6	15000846	BUSHING.....	8	50	84001928	PIN-DRAW, LOCKING	2
7	15000890	BUSHING.....	16	51	12100010	SHOCK ABSORBER-COIL SPRING, STEERING 2	
8	15000891	STOP-BUMPER, CYL.....	2	52	13034000	AIRLINE-NYLON, .375 OD.....	28
9	80000009	BUSHING-SHOCK, ACETAL.....	8	53	14011006	5/16 X 3/4 UNC HEX CAP SCR (GR 5).....	12
10	80000835	TUBE-BUSHING.....	2	54	140B1008	5/16 X 1 UNC HEX CAP SCR (GR 8) O&P	12
11	80001210	TUBE-BUSHING.....	8	55	140B1208	3/8 X 1 UNC HEX CAP SCR (GR 8) O&P.....	4
12	84001041	ASSEMBLY-TUBE, TIE ROD	1	56	140D1622	1/2 X 2 3/4 UNF HEX CAP SCR (GR 8) O&P ..	2
13	84001042	ASSEMBLY-END, TIE ROD (LH).....	1	57	140D1626	1/2 X 3 1/4 UNF HEX CAP SCR (GR 8) O&P ..	2
14	84001043	ASSEMBLY-END, TIE ROD (RH)	1	58	140D1630	1/2 X 3 3/4 UNF HEX CAP SCR (GR 8) O&P ..	2
15	84001123	ARM-TIE ROD.....	1	59	140D1636	1/2 X 4 1/2 UNF HEX CAP SCR (GR 8) O&P ..	2
16	84001124	ARM-TIE ROD.....	1	60	140D2028	5/8 X 3 1/2 UNF HEX CAP SCR (GR 8) O&P ..	4
17	84001247	ASSEMBLY-KNUCKLE, MERITOR 20K (LEFT).....	1	61	140D2416	3/4 X 2 UNF HEX CAP SCR (GR 8) O&P.....	14
18	84001248	ASSEMBLY-KNUCKLE, MERITOR 20K (RIGHT).....	1	62	140D2446	3/4 X 5 3/4 UNF HEX CAP SCR (GR 8) O&P ..	8
19	84001416	BEARING-ROLLER, CONE	2	63	141A1610	1/2 X 1 1/4 UNC FLANGE BOLT (GR 8) O&P 20	
20	84001417	BEARING-ROLLER, CONE	2	64	14752000	5/8 UNF HEX JAM NUT.....	2
21	84001436	BEARING-THRUST	2	65	14752402	3/4 UNF HEX JAM NUT, O&P	2
22	84001540	ASSEMBLY-HUB & DRUM, FN MNT	2	66	14771606	1/2 UNF HEX TOP LOCK NUT (GR C) O&P ...	8
23	84001616	BRAKE ASSY-20K (LH).....	1	67	14772006	5/8 UNF HEX TOP LOCK NUT (GR C) O&P ...	4
24	84001617	BRAKE ASSY-20K (RH).....	1	68	14772406	3/4 UNF HEX TOP LOCK NUT (GR C) O&P ...	8
25	84001655	PAD-BRAKE, 20K	4	69	14801404	7/16 UNC TOP LOCK FL NUT (GR G) O&P ..	2
26	84001671	CAP, HUB.....	2	70	14801600	1/2 UNC SERRATED FLANGE NUT.....	2
27	84001673	GASKET	2	71	14801604	1/2 UNC TOP LOCK FL NUT (GR G) O&P	8
28	84001743	SEAL-OIL.....	2	72	14802405	3/4 UNF TOP LOCK FL NUT (GR G) O&P	14
29	84001745	NUT-SPINDLE, INNER.....	2	73	14851000	5/16 LOCK WASHER.....	12
30	84001746	NUT-SPINDLE, OUTER	2	74	14851004	5/16 LOCK WASHER OIL&PHOS	12
31	84001747	RING-LOCK.....	2	75	14851200	3/8 LOCK WASHER.....	4
32	84001748	WASHER-RETAINER.....	2	76	800A0119	CONTROL-AIR, LIFT SPRING.....	1
33	84001749	SHIM (.030).....	2	77	800A0130	ACTUATOR-SPRING, LIFT.....	2
34	84001750	SHIM (.015).....	2	78	800A0131	CAP-CYL., AIR.....	2
35	84001751	SHIM (.010).....	2	79	800A0132	PISTON-CYL., AIR.....	2
36	84001752	SHIM (.005).....	2	80	800A0242	WELDMENT-CROSSMEMBER	1
37	84001753	BOLT-STOP, STEERING	2	81	SEE NOTE	BRACKET-MOUNT, FRAME	2
38	84001754	NUT-HEX, SLOTTED.....	2	82	SEE NOTE	BRACKET-MOUNT, AIRSPRING.....	2
39	84001756	KEY-ARM, KNUCKLE.....	2	83	800A0250	BRACKET-MOUNT, FASTENER	2
40	84001757	PIN-COTTER, .13	2	84	800A0251	BRACKET-MOUNT, FASTENER	2
41	84001758	PIN-COTTER, .15 X 3.00.....	2	85	810A0058	BRACKET-HANGER, SUSPENSION.....	1
42	84001760	PIN-KING	2	86	810A0059	BRACKET-HANGER, SUSPENSION.....	1
43	84001762	CAP-KNUCKLE	4	87	820A0034	ARM-CONNECTING.....	4
44	84001763	GASKET-CAP, KING PIN	4	88	830A0028	AXLE-FAB., 20K DURALIFT II	1

