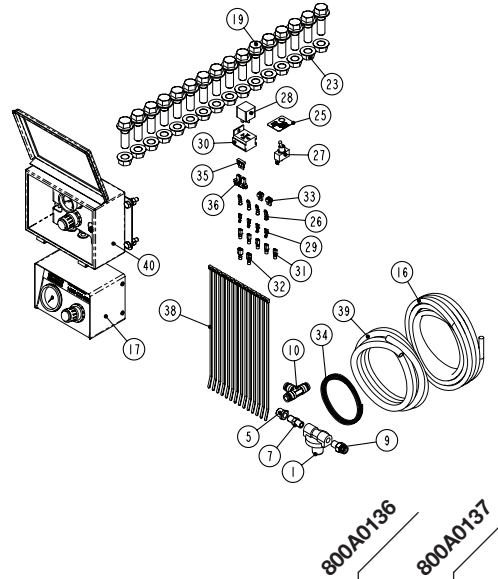
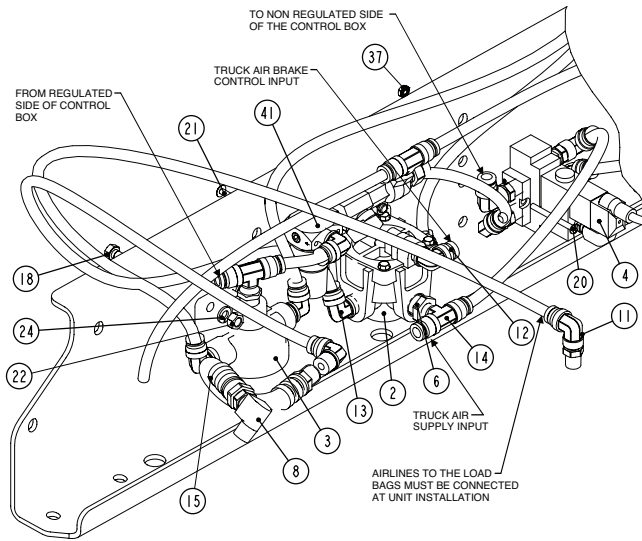


AIR CONTROL KITS

Integrated Air Kit - 800A0136 & 800A0137 - Non-Current

Fits Part Numbers - 8A000499 & 8A000490



| ITEM | PART NO | PART DESCRIPTION | QTY | QTY |
|------|-----------|--|-----|-----|
| 1 | 13010084 | VALVE-PRESSURE PROTECTION | 1 | 1 |
| 2 | 13010508 | RELAY VALVE, RG-2, MIDLAND..... | 1 | 1 |
| 3 | 13010546 | VALVE-QUICK RELEASE | 1 | 1 |
| 4 | 13010555 | VALVE-SOLENOID, 4 WAY, 12 V | 1 | 1 |
| 5 | 13022016 | BUSHING-REDUCER 3/8 M-NPT TO 1/4 F-NPT | 2 | 2 |
| 6 | 13022018 | BUSHING-REDUCER, 1/2 M-NPT - 1/4 F-NPT | 1 | 1 |
| 7 | 13022065 | HEX NIPPLE, 1/4 M-NPT | 1 | 1 |
| 8 | 13022102 | ELBOW, 90 STREET (3/8-NPT) | 2 | 2 |
| 9 | 13025049 | CONNECTOR-MALE, 3/8 TB, 1/4 NPT | 1 | 1 |
| 10 | 13025061 | TEE-UNION, 3/8 TUBE | 1 | 1 |
| 11 | 13025094 | ELBOW-SWIV, 3/8 TB, 1/4 NPT | 2 | 2 |
| 12 | 13025104 | ELBOW-3/8 TB, 1/4 M-NPT | 1 | 1 |
| 13 | 13025105 | ELBOW-3/8 TB, 3/8 M-NPT | 6 | 6 |
| 14 | 13025143 | TEE-BRANCH, 1/4 M-NPT, 3/8 TUBE | 2 | 2 |
| 15 | 13029972 | ASSEMBLY-AIR BRAKE HOSE (26 IN.) | 2 | 2 |
| 16 | 13034000 | 3/8 AIRLINE | 1 | 1 |
| 17 | 13501011 | BOX-CONTROL, STD. AIR | 1 | - |
| 18 | 140B1008 | 5/16 X 1 UNC HEX CAP SCR (GR 8) O&P | 4 | 4 |
| 19 | 141A2016 | 5/8 X 2 UNC FLANGE BOLT (GR 8) O&P | 16 | 16 |
| 20 | 144N0B16 | 10-32 X 2 ROUND HEAD MACH. SCREW | 2 | 2 |
| 21 | 144P0B04 | 10-32 X 1/2 TRUSS HEAD MAC. SCREW | 2 | 2 |
| 22 | 14701004 | 5/16 UNC HEX NUT (GR B) O&P | 4 | 4 |
| 23 | 14802004 | 5/8 UNC TOP LOCK FL NUT (GR G) O&P | 16 | 16 |
| 24 | 14851004 | 5/16 LOCK WASHER OIL&PHOS | 4 | 4 |
| 25 | 15001318 | PLATE-SWITCH, LIFT | 1 | 1 |
| 26 | 15050055 | TERMINAL-RING, #10 STUD, 14-16 | 4 | 4 |
| 27 | 15050350 | SWITCH-TOGGLE | 1 | 1 |
| 28 | 15050351 | RELAY | 1 | 1 |
| 29 | 15050353 | CONNECTOR-PUSH-ON, FEMALE | 4 | 4 |
| 30 | 15050354 | RELAY BASE | 1 | 1 |
| 31 | 15051100 | CONNECTOR-SLIDE, FEMALE, 14-16 | 5 | 5 |
| 32 | 15051101 | CONNECTOR-SLIDE, MALE, 14-16 | 2 | 2 |
| 33 | 15051250 | T-TAP, 14-18 | 2 | 2 |
| 34 | 15051505 | WIRE-PRIMARY, 14 GA. GPT (BLACK) 30 FT | 1 | 1 |
| 35 | 15051868 | FUSE-AUTOMOTIVE, 10 AMP | 1 | 1 |
| 36 | 15051884 | HOLDER-FUSE, AUTOMOTIVE, 14-18 | 1 | 1 |
| 37 | 15060042 | 10-32 KEP NUT | 2 | 2 |
| 38 | 1506-0081 | NYLON CABLE TIE, 11" LONG | 14 | 14 |
| 39 | 15092000 | 0.375 CORRUGATED LOOM (120.0") | 1 | 1 |
| 40 | 800A0051 | BOX-CONTROL, SEALED AIR | - | 1 |
| 41 | 800A0119 | CONTROL-AIR, LIFT SPRING | 1 | 1 |

