

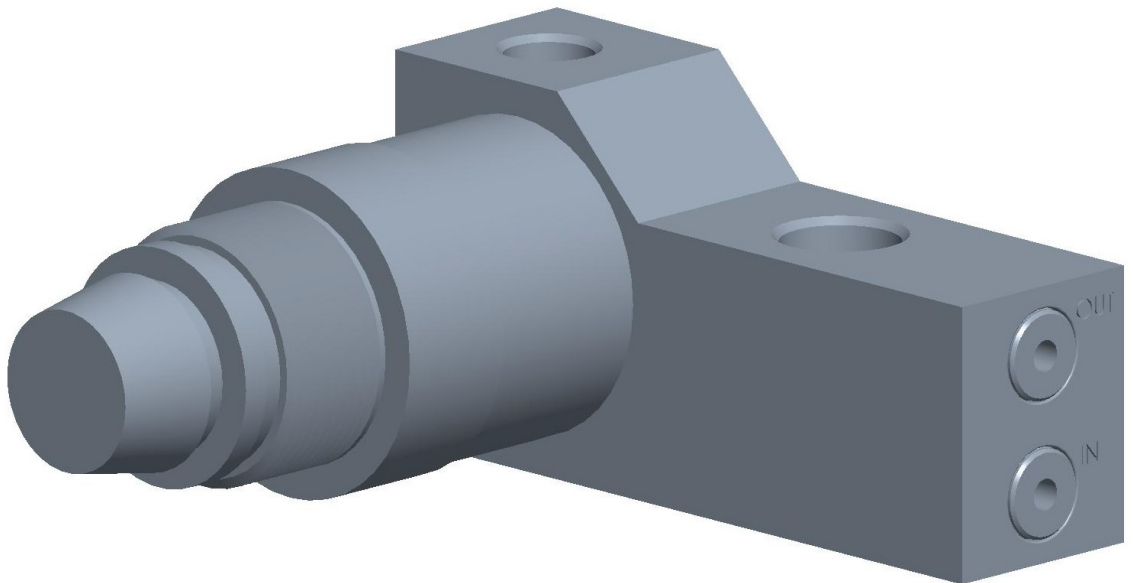


Link Mfg. Ltd.
223 15th St. N.E.
Sioux Center, IA USA
51250-2120
www.linkmfg.com

**QUESTIONS?
CALL CUSTOMER
SERVICE
1-800-222-6283**

INSTALLATION INSTRUCTIONS

4AS00115 SERVICE KIT REGULATOR



IMPORTANT: IT IS IMPORTANT THAT THE ENTIRE INSTALLATION INSTRUCTIONS BE READ THOROUGHLY BEFORE PROCEEDING WITH THE INSTALLATION.






1. INTRODUCTION

Thank you for choosing a Link Auxiliary Suspension. We want to help you get the best results from this suspension and to operate it safely. This instruction contains information to assist in the installation of the reverse lock assemblies for your Link Auxiliary Suspension. This instruction is intended solely for use with this product.

All information in this instruction is based on the latest information available at the time of printing. Link Manufacturing reserves the right to change its products or manuals at any time without notice.


Damaged components should be returned to Link with a pre-arranged Returned Materials Authorization (RMA) number through the Customer Service Department. The damaged component may then be replaced if in compliance with warranty conditions.

2. SAFETY SYMBOLS, TORQUE SYMBOL, and NOTES

 DANGER	DANGER indicates a hazardous situation which if not avoided, will result in death or serious injury.
 WARNING	WARNING indicates a potentially hazardous situation which, if not avoided, could result in death or serious injury.
 CAUTION	CAUTION indicates a potentially hazardous situation which, if not avoided, could result in minor or moderate injury.
 NOTICE	NOTICE indicates a potentially hazardous situation which, if not avoided, may result in property damage.
 TORQUE	TORQUE indicates named fasteners are to be tightened to a specified torque value.
NOTE:	A Note provides information or suggestions that help you correctly perform a task.

3. SAFE WORKING PRACTICES

 **CAUTION** When handling parts, wear appropriate gloves, eyeglasses, ear protection, and other safety equipment.

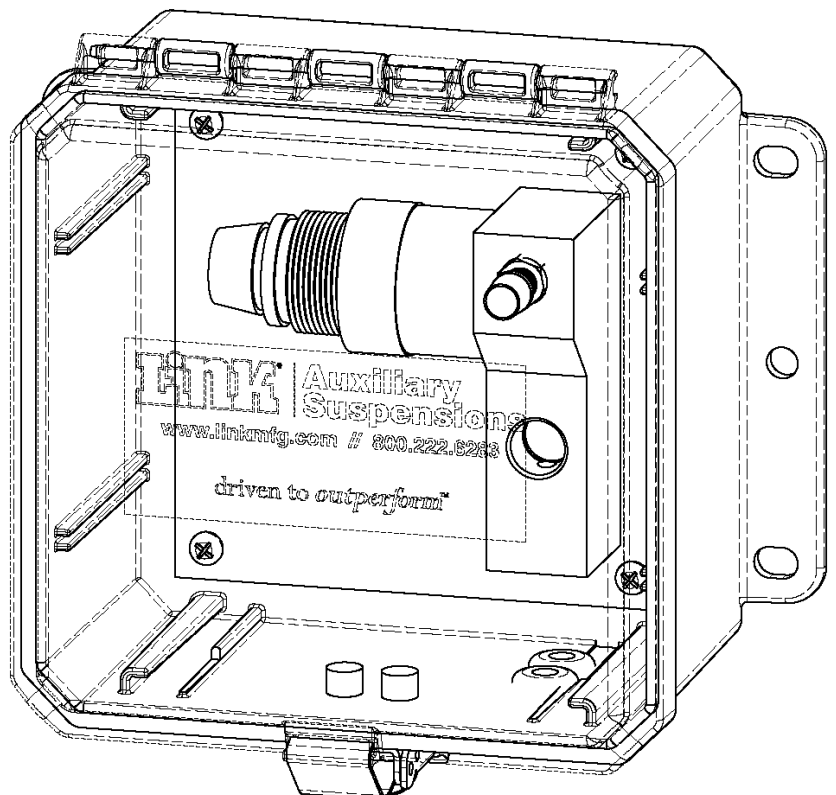
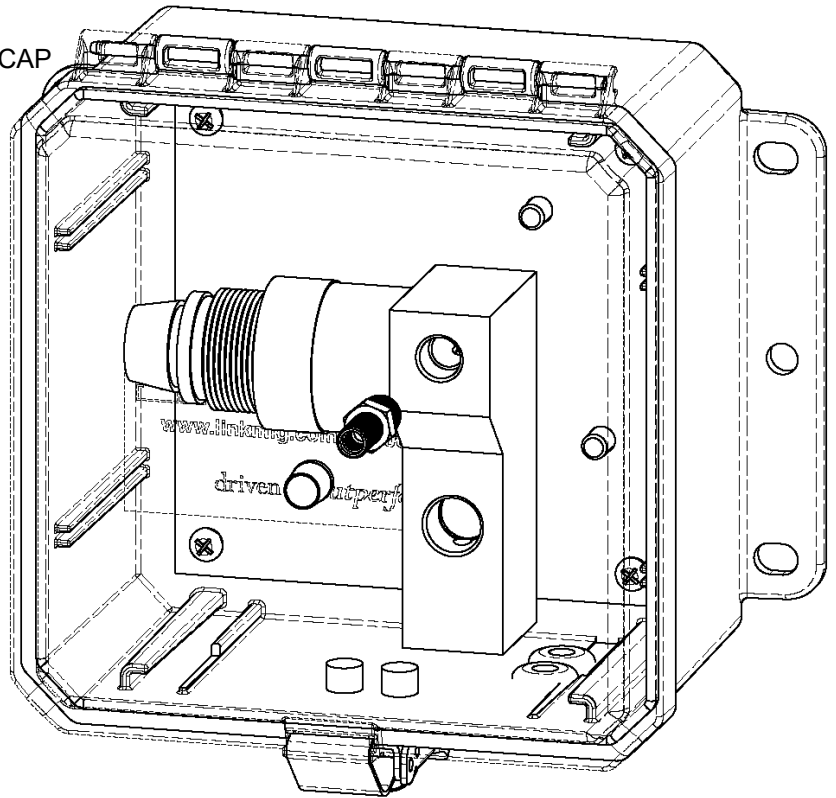
 **CAUTION** Proper tightening of fasteners is important to the performance and safety of the suspension. Follow all torque specifications throughout the instructions.

4. INSTALLATION

1. Remove the plastic cap and valve stem from the old regulator and save them for the new regulator.
2. Once new regulator is mounted in control box, lightly lubricate the valve stem face seals with a silicone based grease.
3. Hand tighten valve stem to the aluminum base.
4. Snug with soft jaw channel lock pliers on aluminum base and replace the plastic cap back on the valve stem.

⚠WARNING

DO NOT TIGHTEN (BY HAND OR CHANNEL LOCKS) THE PLASTIC CAP OR ANY PLASTIC COMPONENT.





LINK MANUFACTURING, LTD.
223 15TH ST. NE, SIOUX CENTER, IA 51250
1-800-222-6283 www.linkmfg.com