

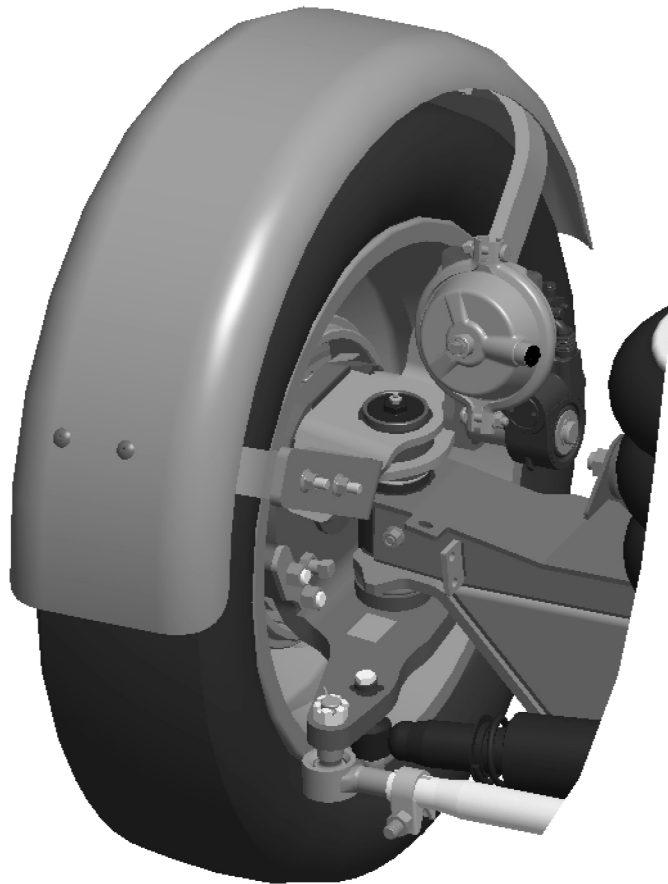


Link Mfg. Ltd.
223 15th St. N.E.
Sioux Center, IA USA
51250-2120
www.linkmfg.com

**QUESTIONS?
CALL CUSTOMER
SERVICE
1-800-222-6283**

INSTALLATION INSTRUCTIONS

800A0201 INTEGRATED FENDER KIT



IMPORTANT: IT IS IMPORTANT THAT THE ENTIRE INSTALLATION INSTRUCTIONS BE READ THOROUGHLY BEFORE PROCEEDING WITH THE INSTALLATION.

1. INTRODUCTION

Thank you for choosing a Link Auxiliary Suspension. We want to help you get the best results from this suspension and to operate it safely. This instruction contains information to assist in the installation of the integrate fender brackets for your Link Auxiliary Suspension. This instruction is intended solely for use with this product.

All information in this instruction is based on the latest information available at the time of printing. Link Manufacturing reserves the right to change its products or manuals at any time without notice.

Damaged components should be returned to Link with a pre-arranged Returned Materials Authorization (RMA) number through the Customer Service Department. The damaged component may then be replaced if in compliance with warranty conditions.

2. TORQUE SYMBOL



TORQUE indicates named fasteners are to be tightened to a specified torque value.

3. SAFE WORKING PRACTICES



When handling parts, wear appropriate gloves, eyeglasses, ear protection, and other safety equipment.



Proper tightening of fasteners is important to the performance and safety of the suspension. Follow all torque specifications throughout the instructions.

4. INSTALLATION

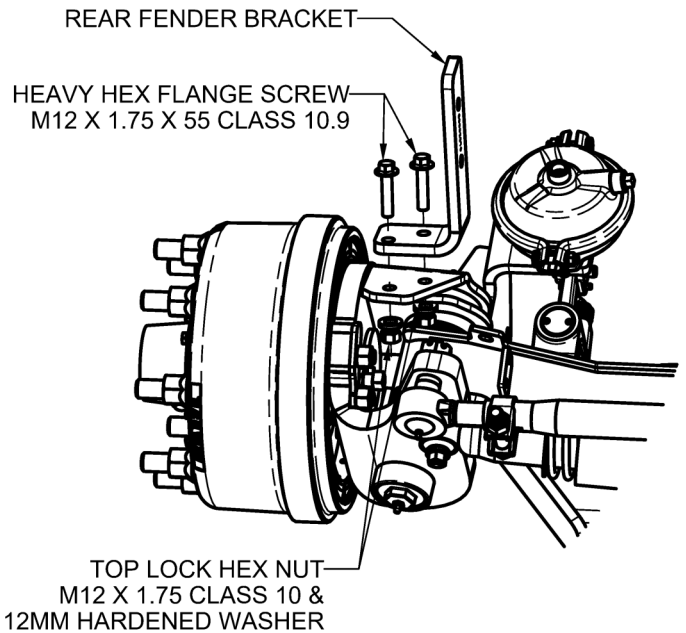
4.1 This kit contains the mounting bracket parts and attachment fasteners for 1 complete axle.

4.2 Install the rear mounting bracket as shown to the right

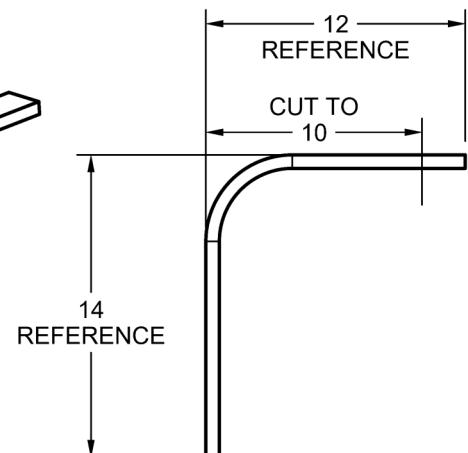
TORQUE M12 flange fasteners to 85-95 FT-LBS

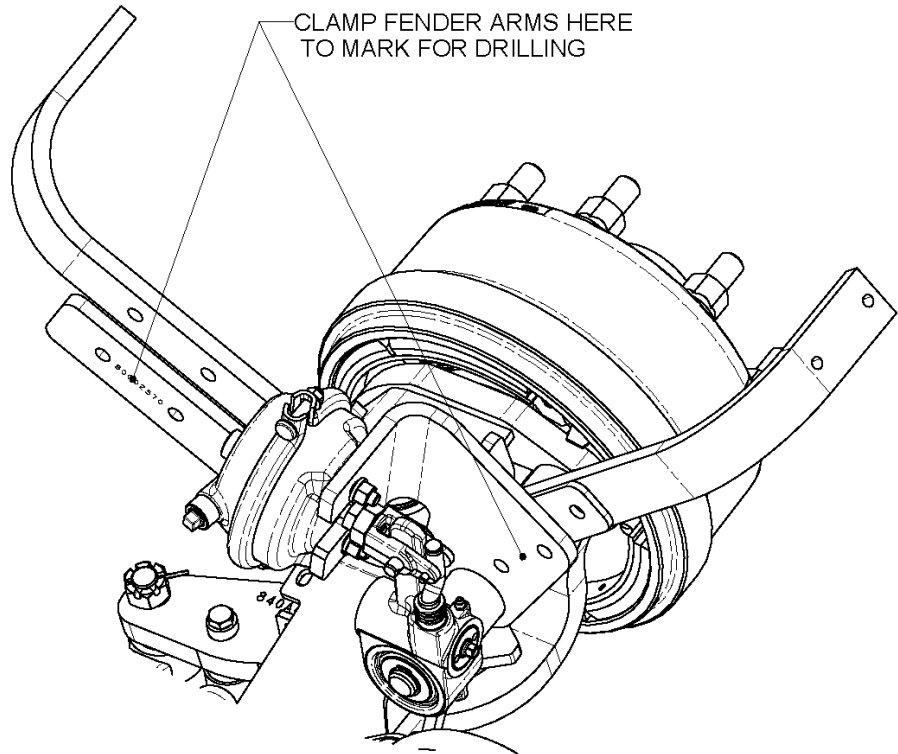
4.3 Repeat process for the right hand side.

4.4 Cut the 12.00 inch length leg of the aluminum fender support arms to 10.00 inches if using 12.00 inch wide fenders.



ALUMINUM SUPPORT BRACKET
QUANTITY OF 4





4. INSTALLATION cont.

4.5 Clamp the aluminum fender support arms to the mounting brackets as shown above. Verify that there is approximately 1-1/2" gap between the aluminum fender arm and the tread face of the tire.

4.6 Mark where to drill the mounting holes in the aluminum fender support arms by using the mounting brackets as a template. If necessary, remove the tire for ease of access to the hole locations.

4.7 Drill 9/16" diameter holes for mounting.

4.8 Repeat process for the right hand side.

4.9 Assemble the aluminum fender arms to the mounting brackets as shown on the next page.

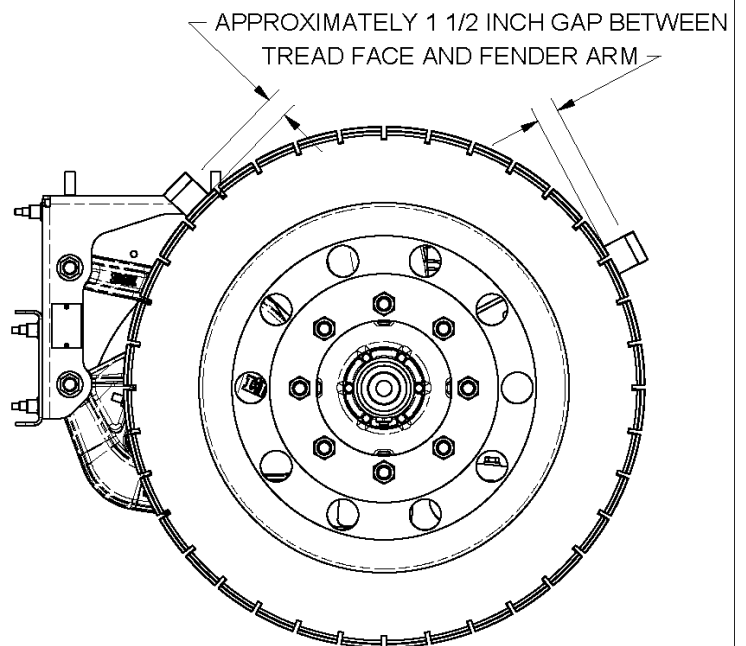
NOTICE For 8K Fender Installation, use spacers 8X 80002598 and 8X 141B1218 to replace 14100702 bolts in assembly.

TORQUE front M12 fasteners to 85-95 FT-LBS.

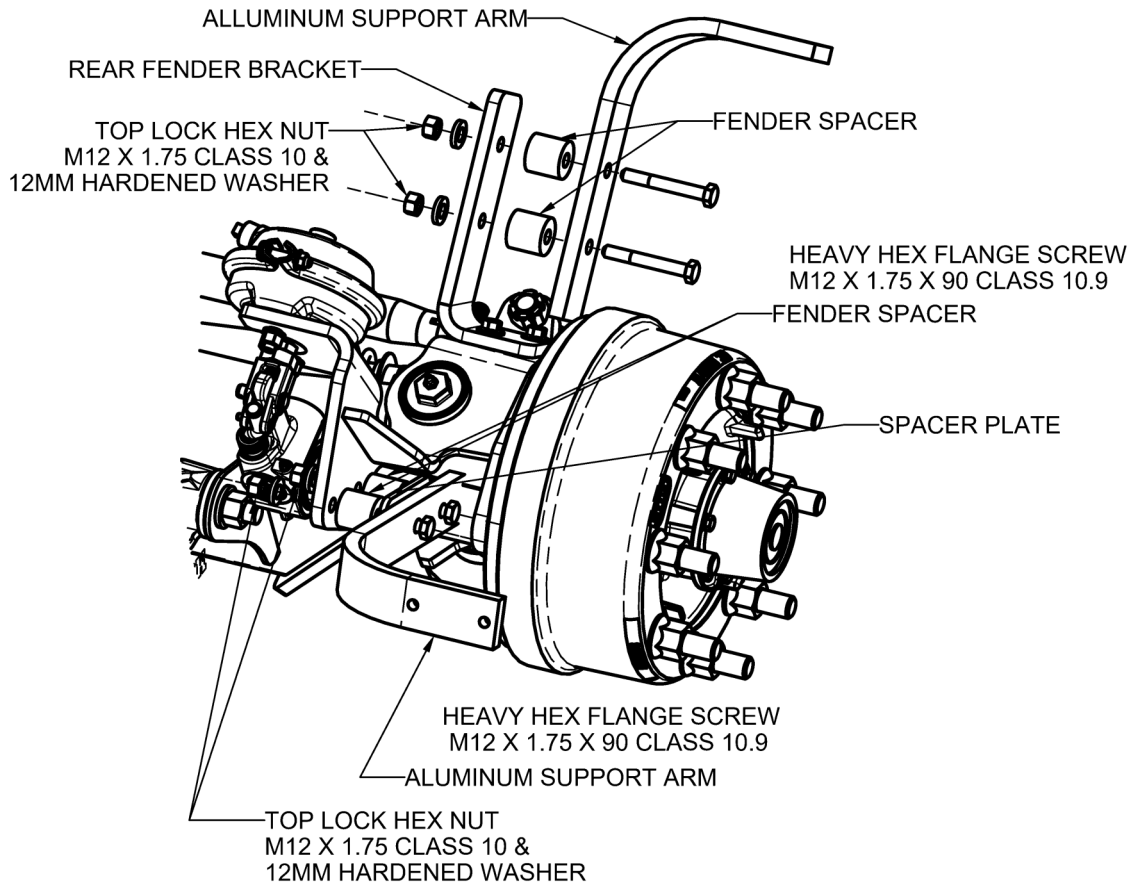
TORQUE rear M12 fasteners to 50-60 FT-LBS.

TORQUE 3/8" fasteners to 40-50 FT-LBS.

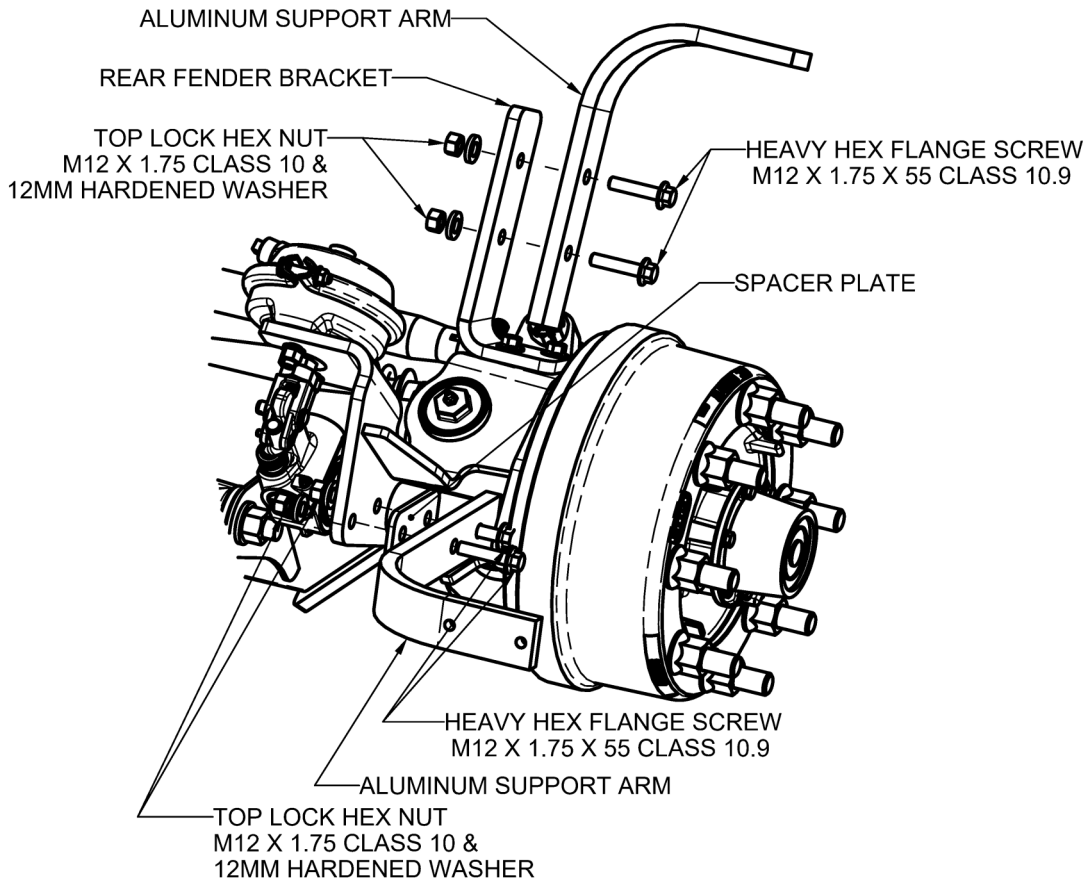
4.10 Repeat process for the right hand side.



8K FENDER KIT



10K FENDER KIT



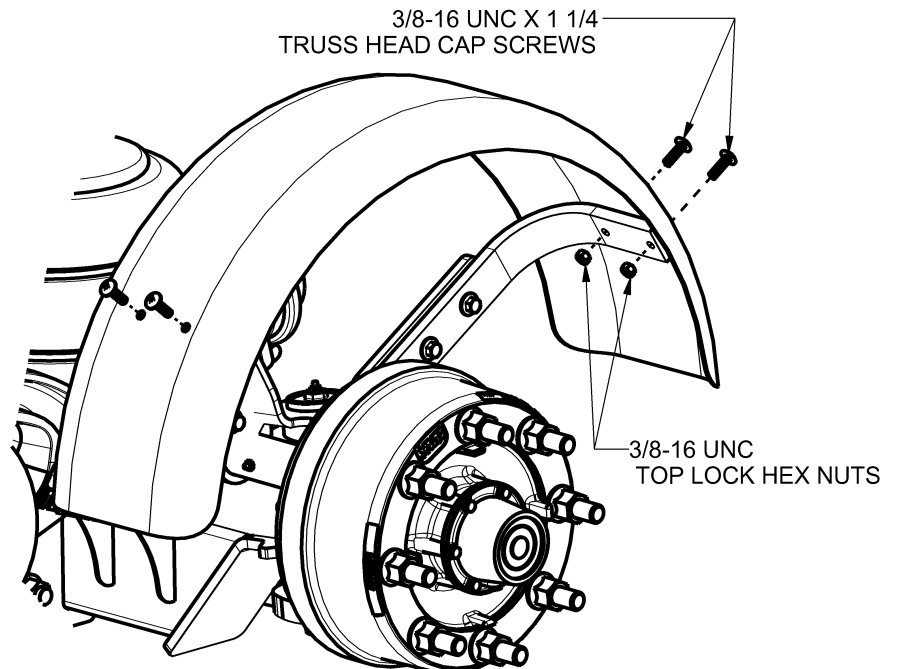
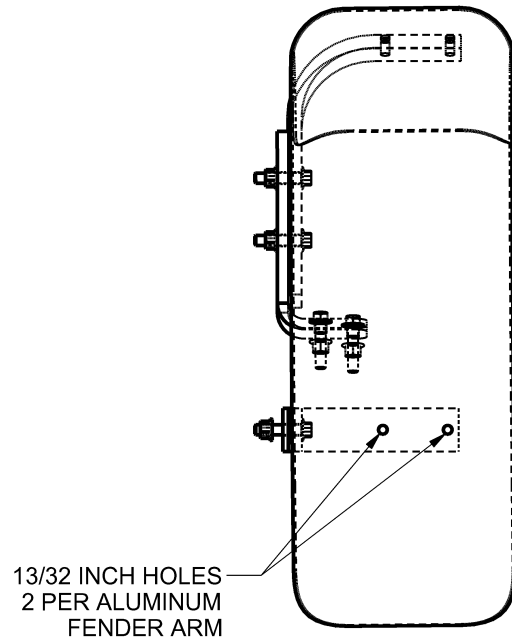
4. INSTALLATION cont.

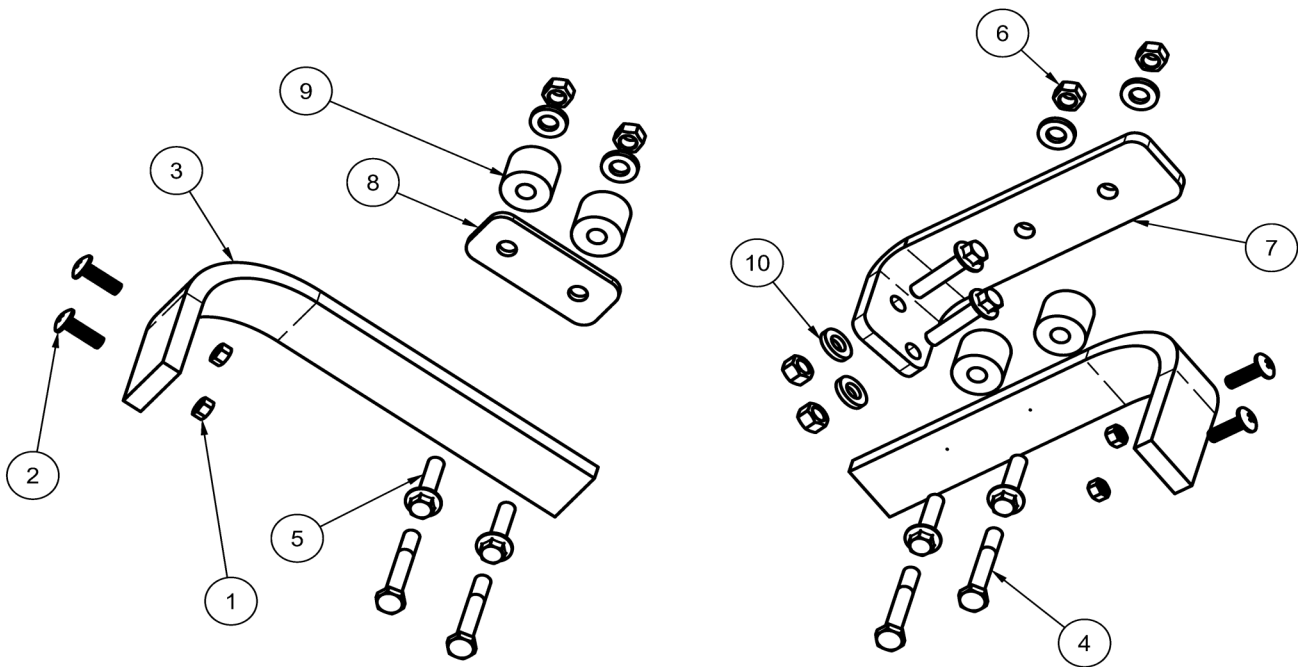
4.11 Place the fender on top of the aluminum fender arms. Rotate the fender to achieve the desired position. Make sure the fender is parallel to the side of the tire.

4.12 Clamp the fender to the aluminum fender arm. Drill two 13/32" diameter holes per aluminum arm as far apart as possible yet centered on the fender and within the flat of the aluminum fender arm as shown in **Fig 6**.

4.13 Bolt the fenders to the aluminum fender arms with the 3/8" Truss Head Bolts and 3/8" Lock Nuts provided.

 **TORQUE** 3/8" fasteners to 15-20 FT-LBS.





NOTE: SHOWING LEFT SIDE EXPLODED
RIGHT SIDE ASSEMBLED OPPOSITE

800A0201 - KIT-FENDER MOUNT, 8K/10K AXLE		
ITEM	DESCRIPTION	QTY
1	3/8-16 UNC TOPLOCK NUT (ZINC PLATED)	8
2	3/8-16 UNC X 1 1/4 TRUSS HEAD CAP SCREW	8
3	ARM-ALUMINUM, 5/8" X 12"	4
4	HEX CAP SCREW, M12 X 1.75 X 90, CLASS 10.9	4
5	HEX HEAD FLANGE SCREW, M12 X 1.75 X 55, CLASS 10.9	8
6	HEX TOP LOCK NUT, M12 X 1.75, 10	12
7	REAR-FENDER BRACKET, L/H	1
-	REAR-FENDER BRACKET, R/H	1
8	SPACER-FENDER, 10K	2
9	SPACER-FENDER, 8K	8
10	WASHER-HARDENED, 12MM	12



LINK MANUFACTURING, LTD.
223 15TH ST. NE, SIOUX CENTER, IA 51250
1-800-222-6283 www.linkmfg.com