

LIFTABLE

SUSPENSIONS

INSTALLATION INSTRUCTIONS

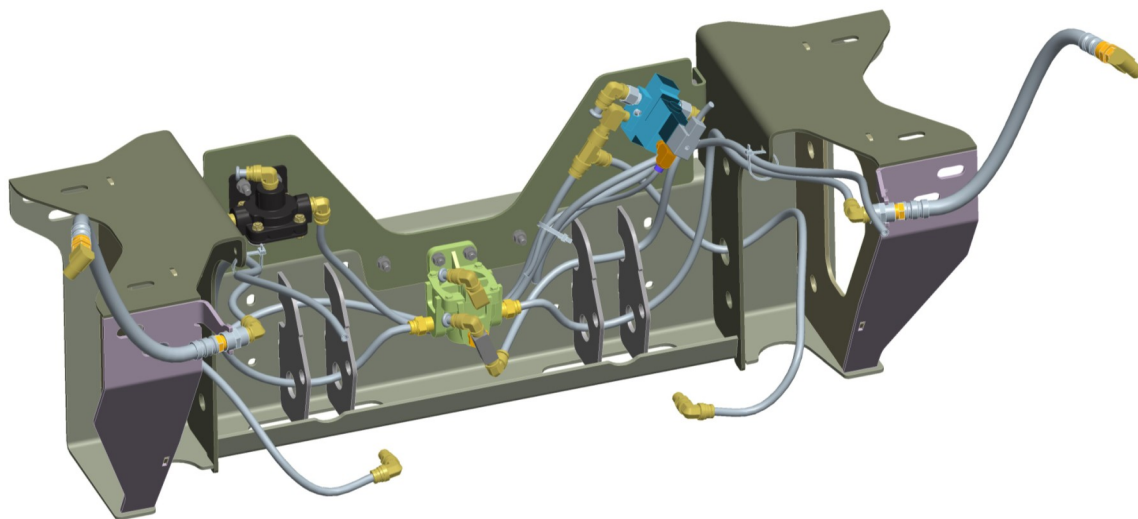
PARTS LIST

INTEGRATED AIR CONTROL KITS

(800A0174 AND 800A0175)

AIR CONTROL KITS

(800A0303 AND 800A0304)



Link mfg. Ltd.
223 15th St. N.E.
Sioux Center, IA USA
51250-2120

(712) 722-4874
Fax (712) 722-4876

QUESTIONS?
CALL CUSTOMER
SERVICE
1-800-222-6283

These **AIR CONTROL KITS** are used for the Link SS135 Suspension. (13.5K Model)

NOTES:

- 1) Considerations should be made to route all wiring and airline in protective locations away from any moving parts.
- 2) Cable ties or other fastening devices may be required to secure airline, wire and/or fittings to truck/suspension.
- 3) Apply Permatex #807 or comparable anaerobic pipe thread sealant to fill three exterior pipe threads on brass fittings and tighten 1-½ revolutions beyond hand tight.

IMPORTANT: When installing your kit use the instructions for the correct option as determined below:

OPTION 1: Kit will be installed on a steerable suspension in which the driver wants the lift axle to be up when ignition is off. This is the default.

OPTION 2: Kit will be installed on a steerable suspension in which the driver wants the lift axle to be down when ignition is off.

FIG. 1

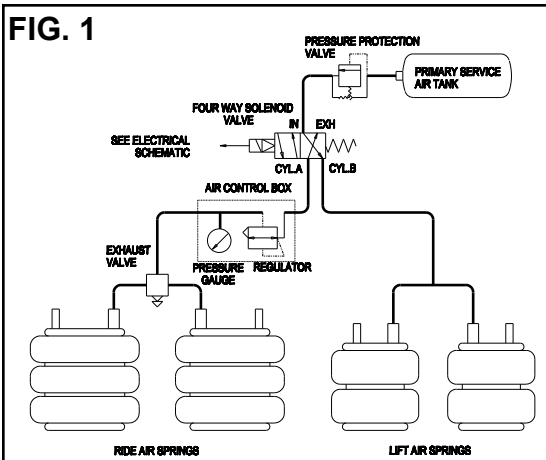


FIG. 2

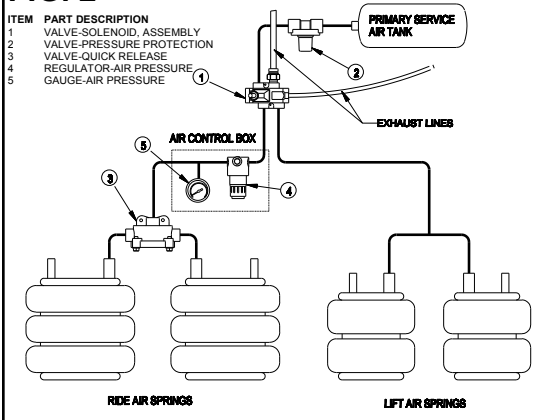
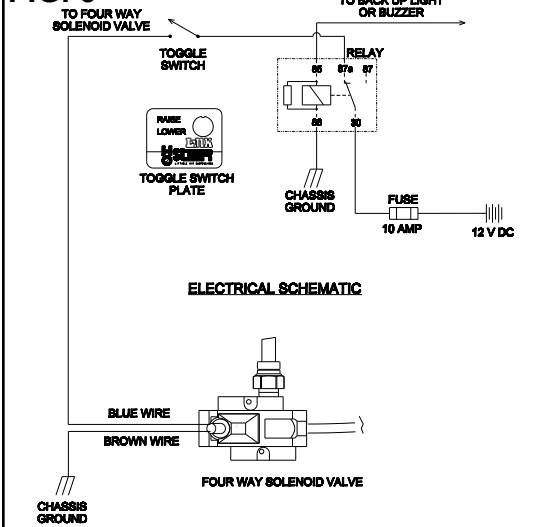


FIG. 3



OPTION 1– AXLE UP WITH IGNITION OFF

(The suspension is pre-plumbed for this option from the factory.)

PLUMBING INSTRUCTIONS

- Connect pressure protection valve directly to the air supply tank on the truck. **IMPORTANT:** Make sure direction of flow for the system matches flow indicator on the pressure protection valve.
- Loosely mount the Air Control Box Assembly to the truck exterior in desired location for driver convenience, making sure air controls are easily accessible. (Some states may allow in cab mounting of the air control box.)
- Route all airline to your suspension using plumbing schematic in Figures 1 and 2.
- Connect brake control valve to the trucks air brake system.
- Secure control box and any loose components to the truck.

ELECTRICAL INSTRUCTIONS

CAUTION: Always disconnect the battery while working with the vehicle's electrical system.

- Mount the relay base to the truck in a protected location. **NOTE:** If there is an open slot in the truck's relay panel and you wish to wire your relay through this panel you will not need the supplied relay base.
- Make all wiring connections to fuse, relay, and truck as shown in Figure 3, crimping Push-On Connectors to wires and mounting them in the supplied relay base. **NOTE:** Make sure the 12 VDC source is switched (turns off with the key)
- Make connections to the toggle switch from terminal 87a on the relay, and the blue wire from the solenoid valve.
- Attach the brown wire from the solenoid valve to a reliable grounding point on the truck. Attachment to the truck frame is **NOT** sufficient for a trouble-free ground. **NOTE:** The yellow wire with a green stripe is not used
- Mount the toggle switch and toggle switch plate to the interior of the truck in a desired location. **NOTE:** Make sure that lift axle position correlates with "Raise"/"Lower" position on toggle switch plate (tab on toggle switch plate may need to be removed).
- When all electrical connections have been made, reconnect the battery, pressurize the system and tighten any fittings that are leaking.

OPTION 2 - AXLE DOWN WITH IGNITION OFF

(The suspension is pre-plumbed for Option 1 from factory. If you choose Option 2, CYL A and CYL B ports need to be switched)

FIG. 4

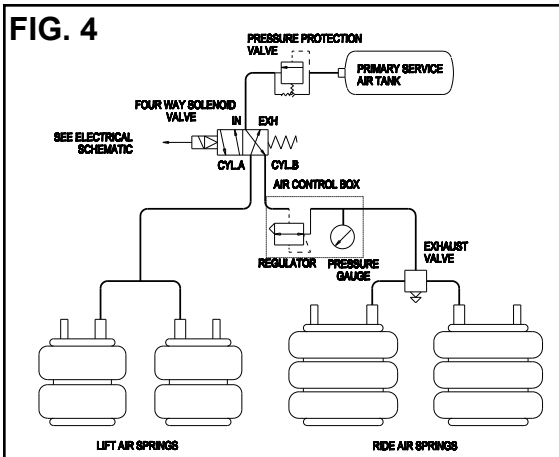


FIG. 5

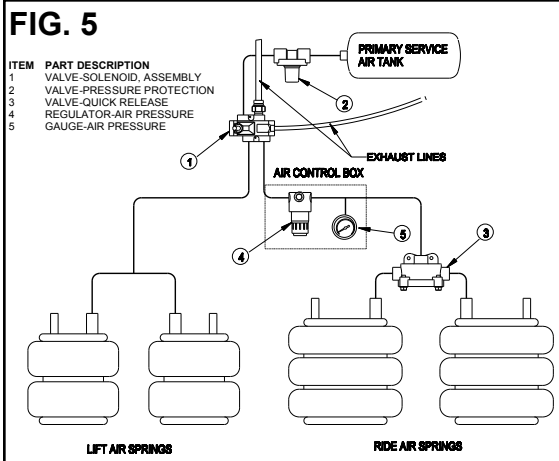
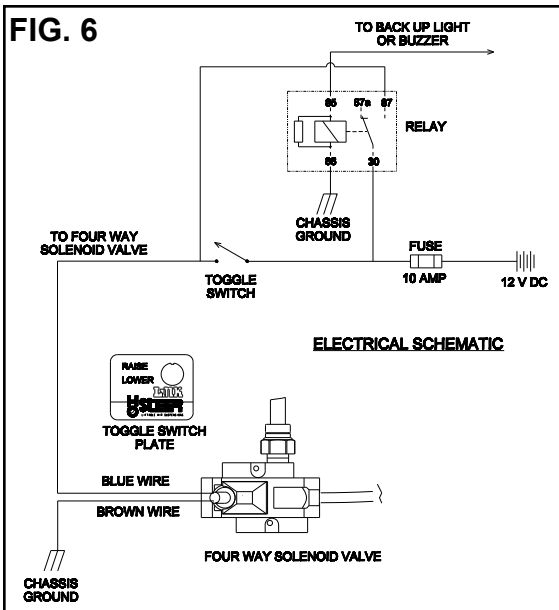


FIG. 6



PLUMBING INSTRUCTIONS

- Connect pressure protection valve directly to the air supply tank on the truck. **IMPORTANT:** Make sure direction of flow for the system matches flow indicator on the pressure protection valve.
- Loosely mount the Air Control Box Assembly to the truck exterior in desired location for driver convenience, making sure air controls are easily accessible. Some states may allow in cab mounting of the air control box.)
- Route all airline to your suspension using plumbing schematic in Figures 4 and 5.
- Connect brake control valve to the trucks air brake system.
- Secure control box and any loose components to the truck.

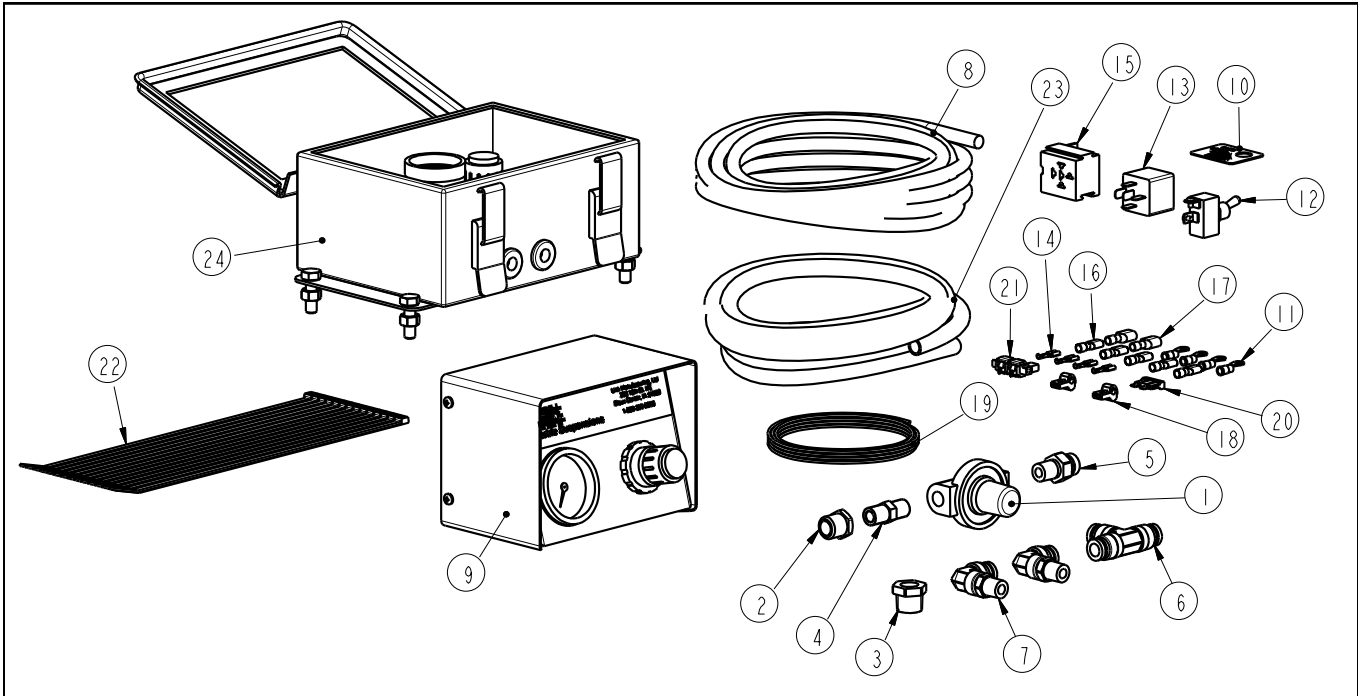
ELECTRICAL INSTRUCTIONS

CAUTION: Always disconnect the battery while working with the vehicle's electrical system.

- Mount the relay base to the truck in a protected location. **NOTE:** If there is an open slot in the truck's relay panel and you wish to wire your relay through this panel you will not need the supplied relay base.
- Make all wiring connections to fuse, relay, and truck as shown in Figure 6, crimping Push-On Connectors to wires and mounting them in the supplied relay base. **NOTE:** Make sure the 12 VDC source is switched (turns off with the key)
- Make connections to the toggle switch from terminal 87, and terminal 30 on the relay. Also connect the blue wire from the solenoid valve to the toggle switch. **IMPORTANT:** Make sure that the toggle switch is wired so that the lift axle is down when the switch is off.
- Attach the brown wire from the solenoid valve to a reliable grounding point on the truck. Attachment to the truck frame is **NOT** sufficient for a trouble-free ground. **NOTE:** The yellow wire with a green stripe is not used
- Mount the toggle switch and toggle switch plate to the interior of the truck in a desired location. **NOTE:** Make sure that lift axle position correlates with "Raise"/"Lower" position on toggle switch plate (tab on toggle switch plate may need to be removed).
- When all electrical connections have been made, reconnect the battery, pressurize the system and tighten any fittings that are leaking.

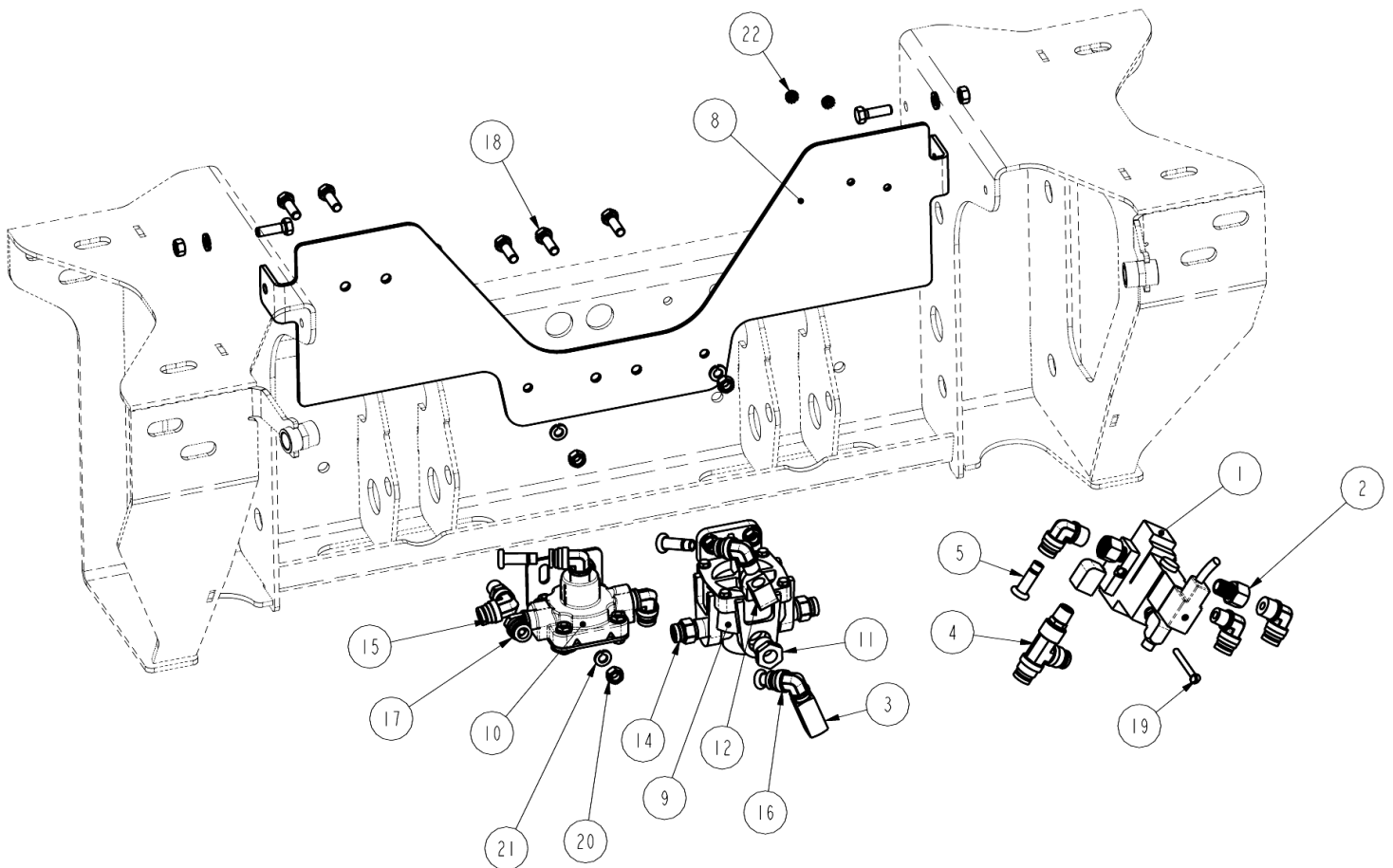
Installation Kit Parts List

800A0303 or 800A0174 for Standard Air Control Box and 800A0304 or 800A0175 for the Sealed Air Control Box



ITEM	PART NUMBER	PART DESCRIPTION	800A0303 OR 800A0174 QTY	800A0304 OR 800A0175 QTY
1	1301-0084	VALVE-PRESSURE PROTECTION	1	1
2	1302-2016	BUSHING-REDUCER 3/8 M-NPT TO 1/4 F-NPT	1	1
3	1302-2018	BUSHING-REDUCER, 1/2 M-NPT - 1/4 F-NPT	1	1
4	1302-2065	HEX NIPPLE, 1/4 M-NPT	1	1
5	1302-5049	CONNECTOR-MALE, 3/8 TB, 1/4 NPT	1	1
6	1302-5061	TEE-UNION, 3/8 TUBE	1	1
7	1302-5094	ELBOW-SWIV, 3/8 TB, 1/4 M-NPT	2	2
8	13034G55	AIRLINE-NYLON, .375 O.D., 65.0' COIL	1	1
9	1350-1011	AIR CONTROL BOX ASSEMBLY	1	-
10	1500-1318	PLATE-SWITCH, LIFT	1	1
11	1505-0055	TERMINAL-RING, #10 STUD, 14-16	4	4
12	1505-0350	SWITCH-TOGGLE	1	1
13	1505-0351	RELAY	1	1
14	1505-0353	CONNECTOR-PUSH-ON, FEMALE	4	4
15	1505-0354	RELAY BASE	1	1
16	1505-1100	CONNECTOR-SLIDE, FEMALE, 14-16	5	5
17	1505-1101	CONNECTOR-SLIDE, MALE, 14-16	2	2
18	1505-1250	T-TAP, 14-18	2	2
19	1505-1505	WIRE-PRIMARY, 14 GA. GPT (BLACK) 30 FT.	1	1
20	1505-1868	FUSE-AUTOMOTIVE, 10 AMP	1	1
21	1505-1884	HOLDER-FUSE, AUTOMOTIVE, 14-18	1	1
22	1506-0081	NYLON CABLE TIE, 11" LONG	14	14
23	15092000	0.375 CORRUGATED LOOM (120.0")	14.0 FT	14.0 FT
24	800A0051	KIT-CONTROL, AIR	-	1

Air Control Parts List



ITEM	PART #	DESCRIPTION	800A174 QTY	800A175 QTY
1	13010555	VALVE-SOLENOID, 4 WAY, 12 V	1	1
2	13022127	ADAPTER-3/8 FEMALE X 1/4 MALE, BRASS	2	2
3	13022128	TEE-1/4", BRASS	1	1
4	13025132	TEE-RUN, 1/4 M-NPT, 3/8 TUBE	1	1
5	13025181	PLUG-PTC, 3/8	4	4
6	13029972	AIR BRAKE HOSE-26 IN. (NOT SHOWN)	2	2
7	13034000	AIRLINE-NYLON, 3/8" BULK (FEET) (SEE NEXT PAGE)	19.8	19.8
8	80002292	PLATE-INTEGRATED AIR MOUNT	1	1
9	1301-0508	RELAY VALVE, RG-2, MIDLAND	1	1
10	1301-0546	VALVE-QUICK RELEASE	1	1
11	1302-2018	BUSHING-REDUCER, 1/2 M-NPT - 1/4 F-NPT	1	1
12	1302-2099	ELBOW, 90 STREET (1/4-NPT)	2	2
13	1302-2102	ELBOW, 90 STREET (3/8-NPT) (NOT SHOWN)	2	2
14	1302-5050	CONNECTOR-MALE, 3/8 TB, 3/8 NPT	2	2
15	1302-5094	ELBOW-SWIV, 3/8 TB, 1/4 M-NPT	2	2
16	1302-5104	ELBOW-3/8 TB, 1/4 M-NPT	4	4
17	1302-5105	ELBOW-3/8 TB, 3/8 M-NPT	7	7
18	140B-1008	5/16 X 1 UNC HEX CAP SCR (GR 8) O&P	8	8
19	144N-0B16	10-32 X 2 ROUND HEAD MACH. SCREW	2	2
20	1470-1004	5/16 UNC HEX NUT (GR B)	8	8
21	1485-1004	5/16 LOCK WASHER	8	8
22	1506-0042	10-32 KEP NUT	2	2

