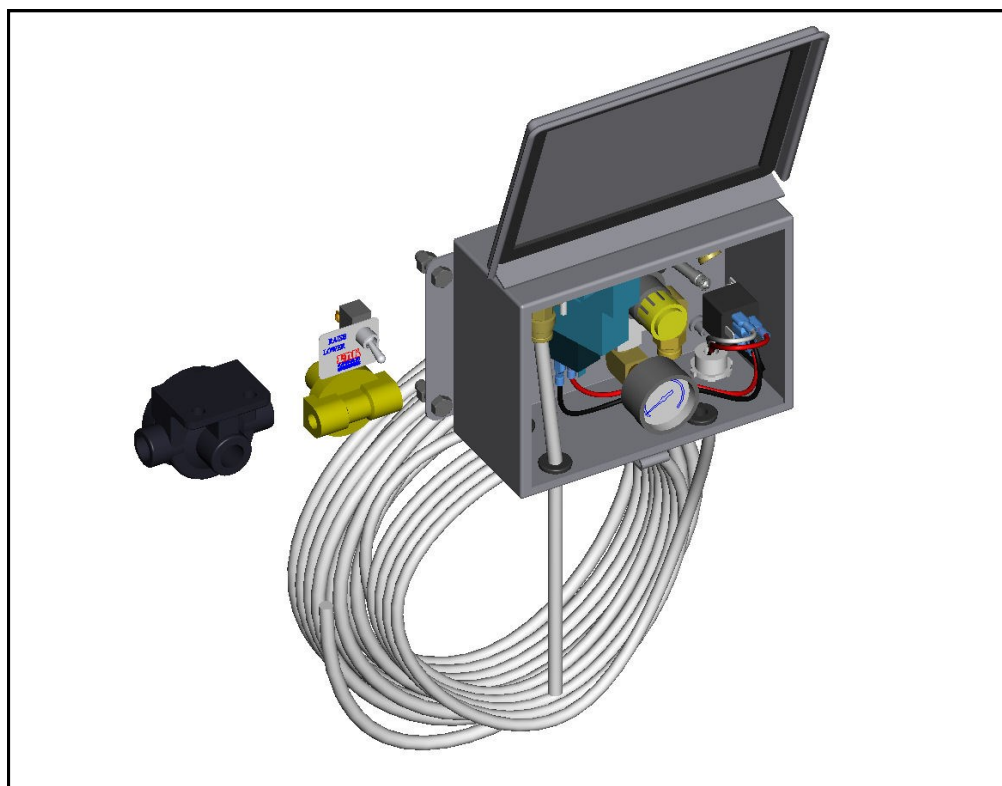




INSTALLATION INSTRUCTIONS

AIR CONTROL KIT (800A0261 & 800A0263)



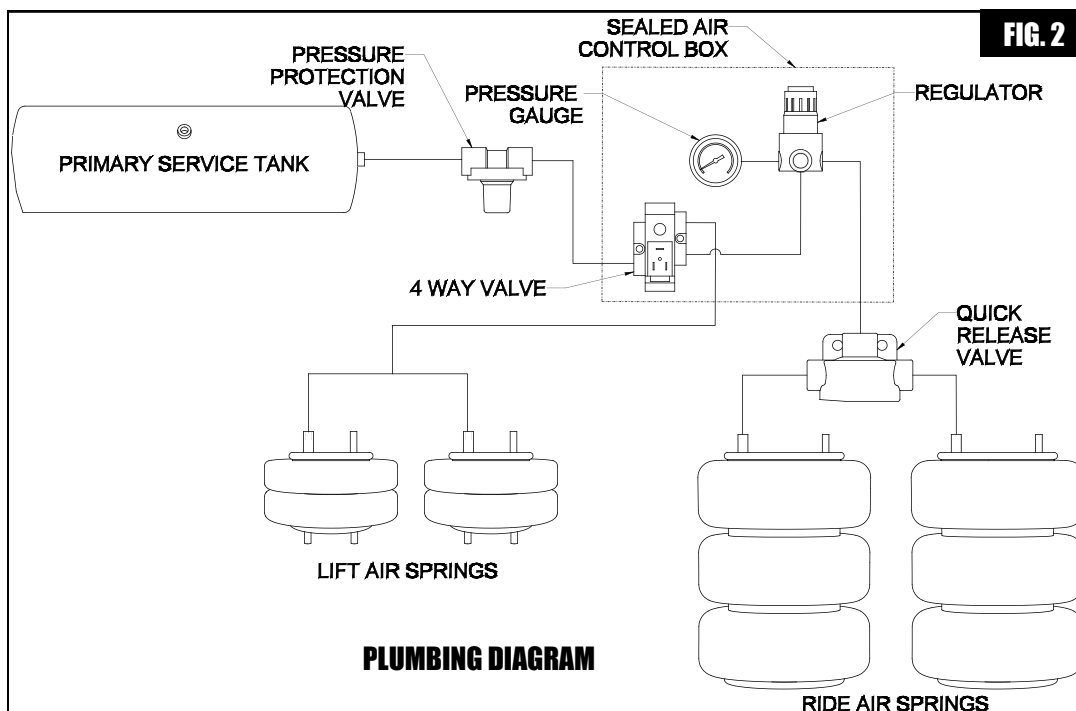
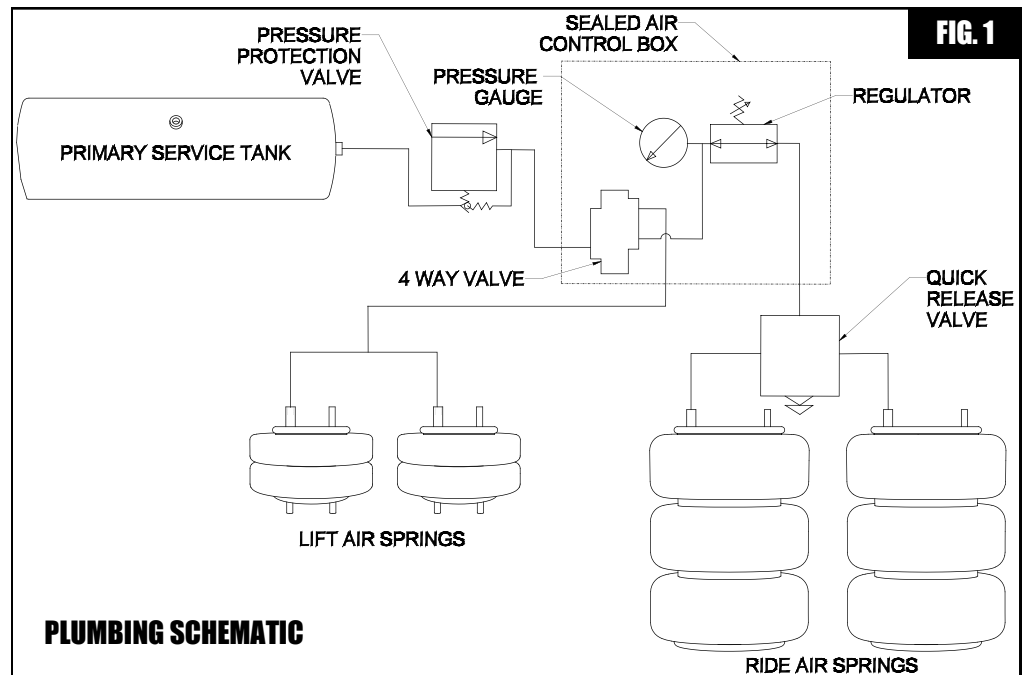
*Link Mfg. Ltd.
223 15th St. NE
Sioux Center, IA USA
51250-2120*

*(712) 722-4874
Fax (712) 722-4876*

**QUESTIONS?
CALL CUSTOMER
SERVICE
1-800-222-6283**

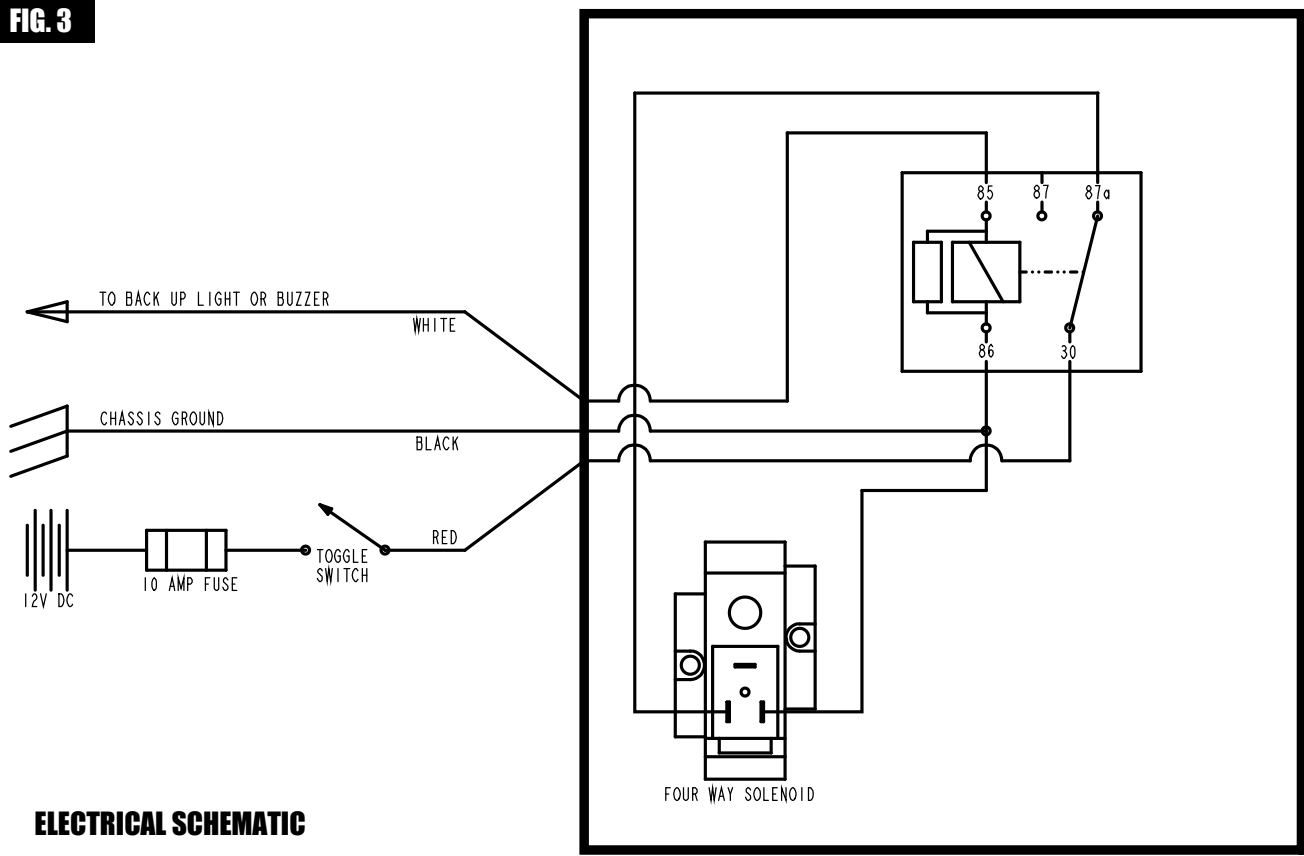
1. AIR CONTROL KIT INSTALLATION

1. Securely mount the Sealed Box to the truck exterior in a desired location for driver convenience making sure that all airline and electrical connections are easily accessible.
2. Connect the Pressure Protection Valve directly to the air supply tank on the truck using Permatex #807 or comparable anaerobic pipe thread sealant around three pipe threads. **IMPORTANT:** Make sure that the direction of flow for the system matches the flow indicator on the Pressure Protection Valve.
3. Securely mount the Quick Release Valve to the suspension cross-member, and route all airline to your suspension using the plumbing diagrams in Figures 1 and 2. **IMPORTANT:** Considerations should be made to route all airline in protective locations away from any moving parts. Cable ties or other fastening devices may be required to secure airline and/or fittings to the truck.
4. **IMPORTANT: Disconnect the battery** and mount the Toggle Switch and Toggle Switch Plate to the interior of the truck in a desired location.



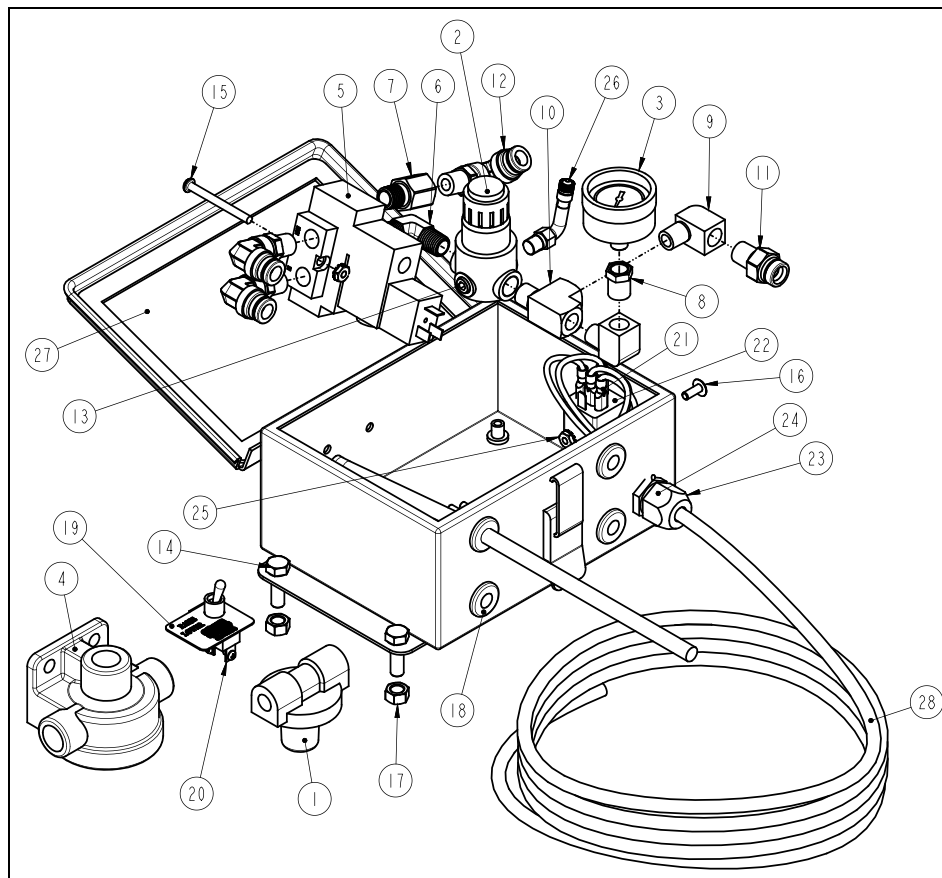
1. Make all electrical connections per Figure 3. **IMPORTANT:** All wiring should be routed in protective locations away from any moving parts. Cable ties or other fastening devices may be required to secure all wiring to the truck. **NOTE:** If you are installing your air control kit to a non-steer lift axle the white wire is not needed.
2. Reconnect the battery and pressurize the system making sure that there are no leaks. Make sure that the position of the lift axle corresponds to the "Raise/Lower" indicator on the Toggle Switch Plate and that the suspension is raised when the ignition is off.

FIG. 3



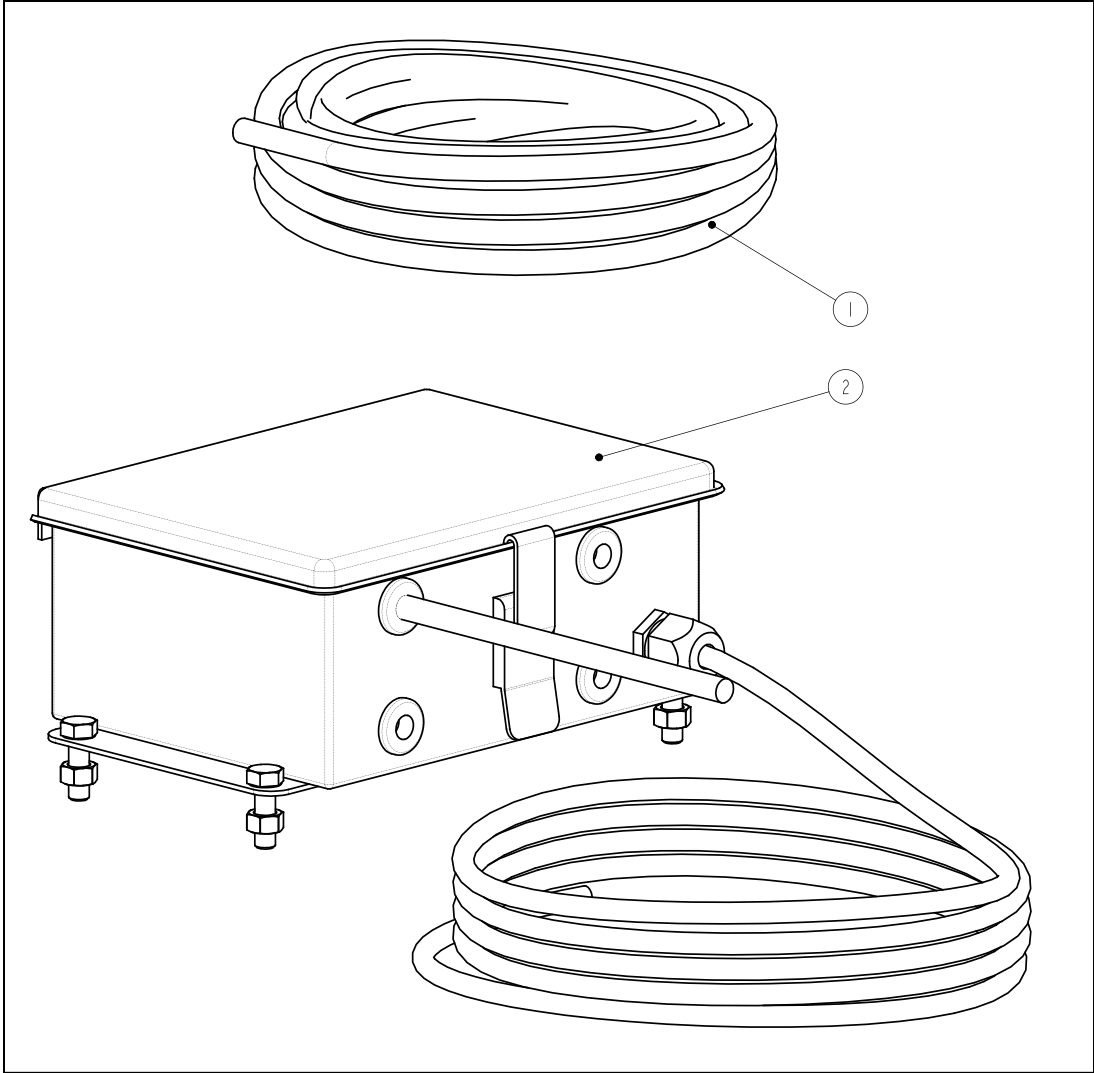
Note: The green conductor in the 18/4 cable is not used in this assembly.

800A0261 PARTS LIST



ITEM	PART NUMBER	DESCRIPTION	QTY
1	1301-0084	VALVE-PRESSURE PROTECTION	1
2	1301-0504	REGULATOR-AIR PRESSURE	1
3	1301-0545	GAUGE-PRESSURE, AIR	1
4	1301-0546	VALVE-QUICK RELEASE	1
5	13010556	VALVE-SOLENOID, 4 WAY, 12 V (BODY)	1
6	13012127	ELBOW-90 DEG., 1/4 M-NPT	1
7	13012128	ADAPTER-1/4 M-NPT	1
8	1302-2014	REDUCER, 1/8 F-NPT 1/4 M-NPT	1
9	1302-2099	ELBOW, 90 STREET (1/4-NPT)	2
10	1302-2123	STREET TEE, 1/4 F-NPT 1/4 M-NPT	1
11	1302-5049	CONNECTOR-MALE, 3/8 TB, 1/4 NPT	1
12	1302-5094	ELBOW-SWIV, 3/8 TB, 1/4 M-NPT	3
13	1302-9990	HEX SOCKET PLUG-1/8 M-NPT, STEEL	1
14	1401-1008	5/16 X 1 UNC HEX CAP SCR (GR 5)	4
15	144N-0B16	10-32 X 2 ROUND HEAD MACH. SCREW	2
16	144P-0B04	10-32 X 1/2 TRUSS HEAD MAC. SCREW	1
17	1476-1000	5/16 UNC HEX CTR LOCK NUT (GR B)	4
18	1500-0308	GROMMET-RUBBER, 3/8	4
19	1500-1318	PLATE-SWITCH, LIFT	1
20	1505-0350	SWITCH-TOGGLE	1
21	1505-1100	CONNECTOR-SLIDE, FEMALE, 14-16	6
22	15050352	RELAY	1
23	15050360	RELIEF-STRAIN, WIRE	1
24	15050361	NUT-RELIEF, STRAIN	1
25	1506-0042	10-32 KEP NUT	3
26	6000-2019A	FITTING-INLET, AIR	1
27	80002130	BOX-AIR CONTROL, SEALED	1
28	15051975	CABLE-ELECTRICAL, SJOOW 18/4	25 FT

800A0263 PARTS LIST



ITEM	PART NUMBER	DESCRIPTION	QTY
1	1303-4000	3/8 AIRLINE	65 FT
2	800A0261	KIT-CONTROL, BOX	1



LINK MANUFACTURING, LTD.
223 15TH ST. NE
SIOUX CENTER, IA 51250
1-800-222-6283