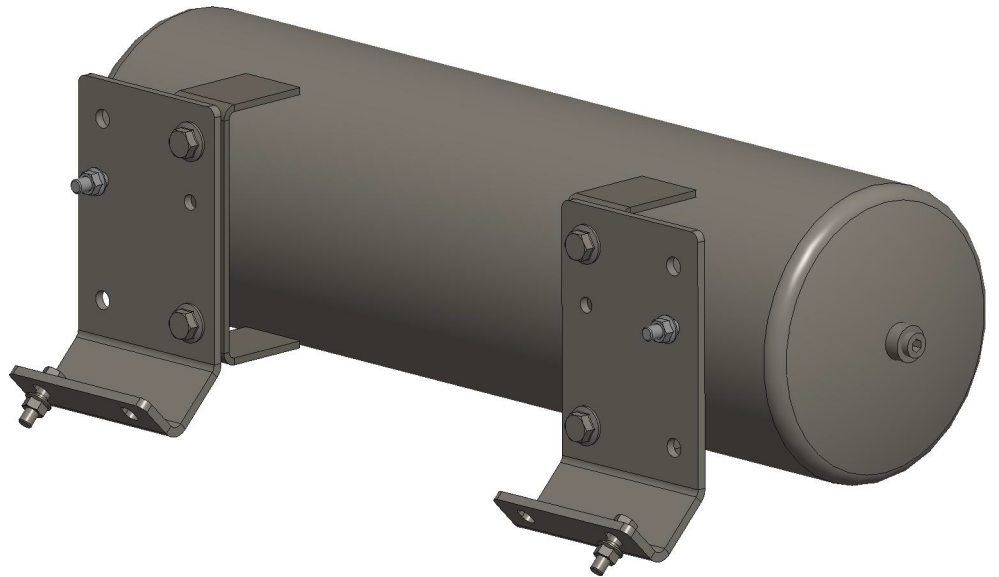




INSTALLATION INSTRUCTIONS

800A0630 - Air Tank Kit



Link Mfg. Ltd.
223 15th St. N.E.
Sioux Center, IA USA
51250-2120
www.linkmfg.com

**QUESTIONS?
CALL CUSTOMER
SERVICE
1-800-222-6283**

IMPORTANT: IT IS IMPORTANT THAT THE ENTIRE INSTALLATION INSTRUCTIONS BE READ THOROUGHLY BEFORE PROCEEDING WITH THE INSTALLATION.






1. INTRODUCTION

Thank you for choosing a Link Auxiliary Suspension Air Tank Kit. We want to help you get the best results from this suspension and to operate it safely. This instruction contains information to assist in the installation of the reverse lock assemblies for your Link Auxiliary Suspension. This instruction is intended solely for use with this product.

All information in this instruction is based on the latest information available at the time of printing. Link Manufacturing reserves the right to change its products or manuals at any time without notice.


Damaged components should be returned to Link with a pre-arranged Returned Materials Authorization (RMA) number through the Customer Service Department. The damaged component may then be replaced if in compliance with warranty conditions.

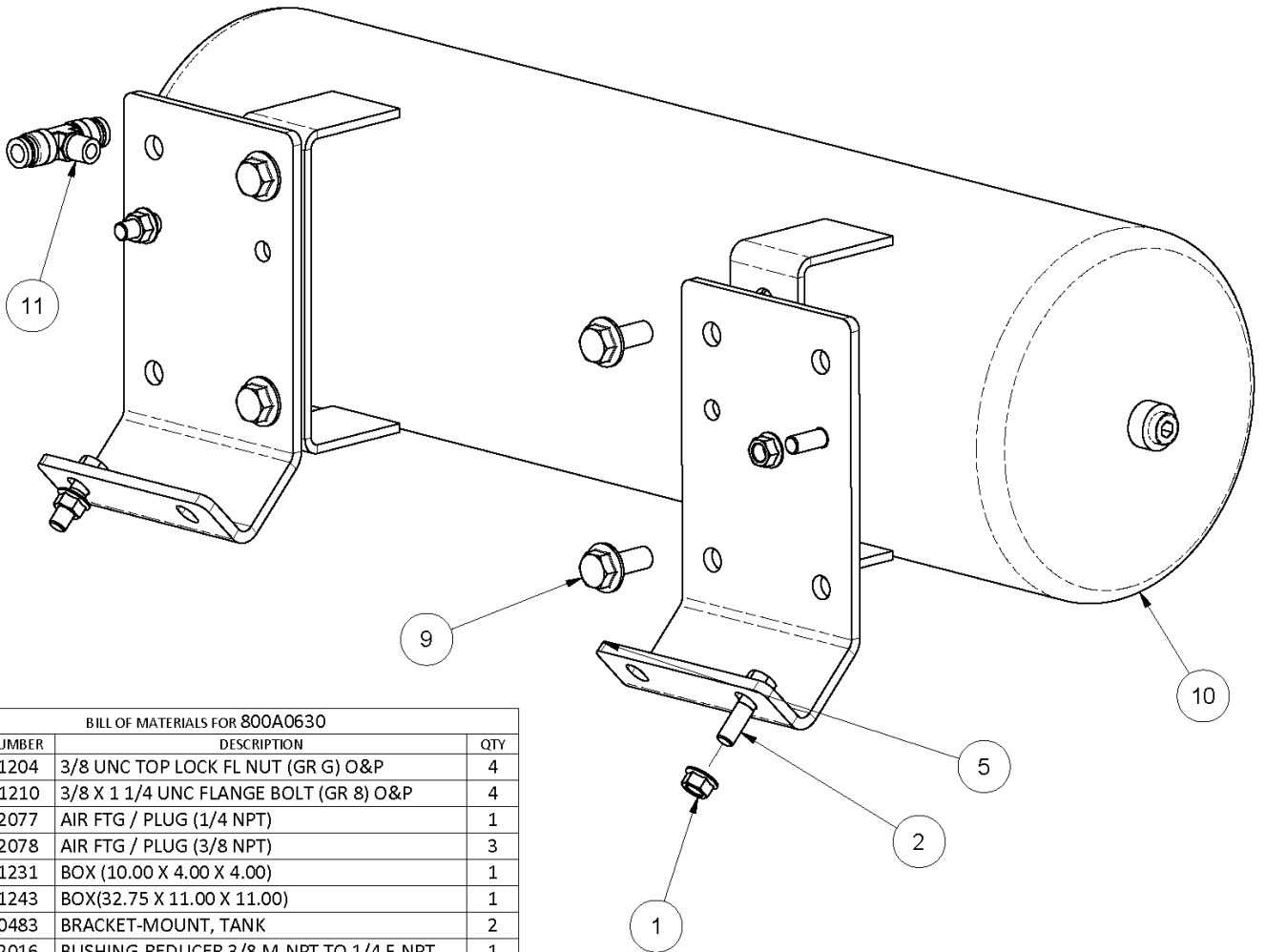
2. SAFETY SYMBOLS, TORQUE SYMBOL, and NOTES

 DANGER	DANGER indicates a hazardous situation which if not avoided, will result in death or serious injury.
 WARNING	WARNING indicates a potentially hazardous situation which, if not avoided, could result in death or serious injury.
 CAUTION	CAUTION indicates a potentially hazardous situation which, if not avoided, could result in minor or moderate injury.
 NOTICE	NOTICE indicates a potentially hazardous situation which, if not avoided, may result in property damage.
 TORQUE	TORQUE indicates named fasteners are to be tightened to a specified torque value.
NOTE:	A Note provides information or suggestions that help you correctly perform a task.

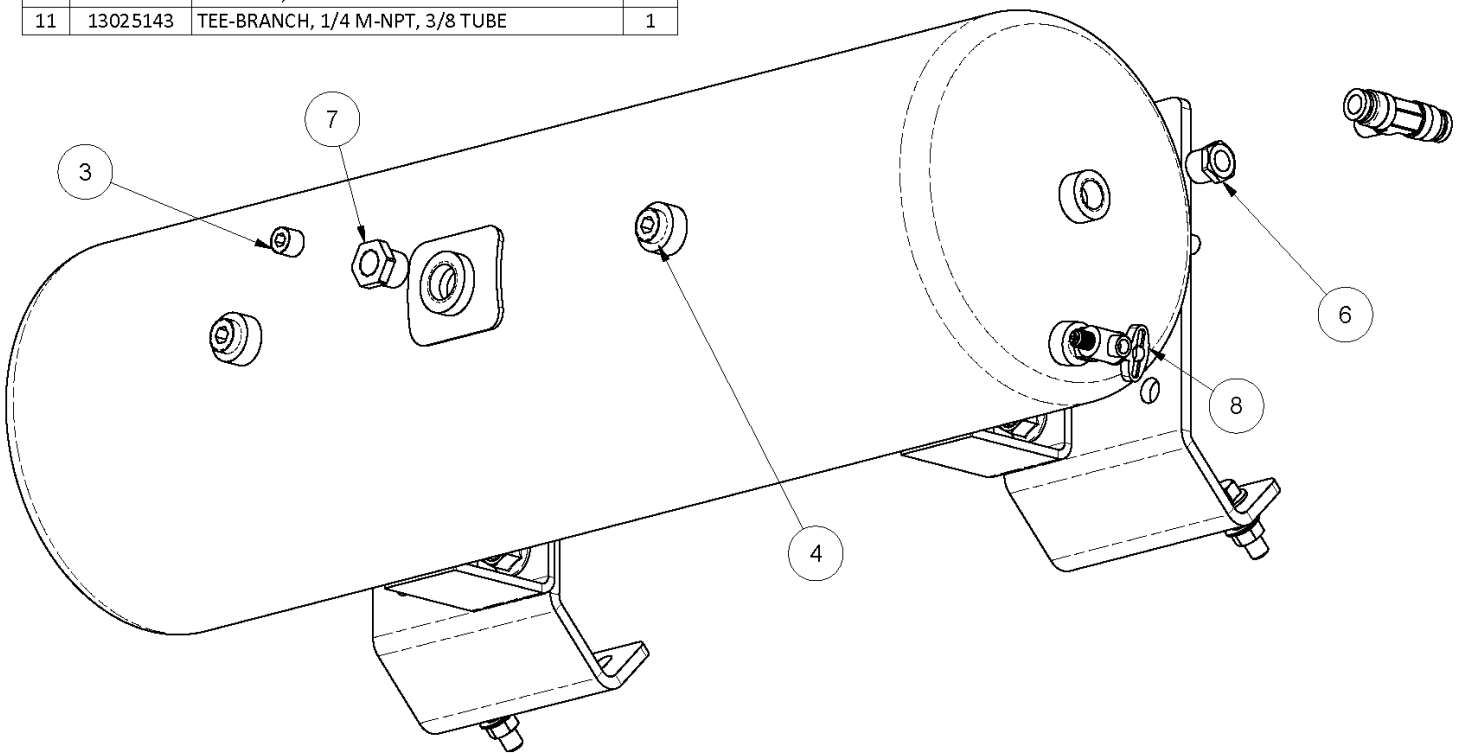
3. SAFE WORKING PRACTICES

 **CAUTION** When handling parts, wear appropriate gloves, eyeglasses, ear protection, and other safety equipment.

 **CAUTION** Proper tightening of fasteners is important to the performance and safety of the suspension. Follow all torque specifications throughout the instructions.



BILL OF MATERIALS FOR 800A0630			
ITEM	PART NUMBER	DESCRIPTION	QTY
1	14801204	3/8 UNC TOP LOCK FL NUT (GR G) O&P	4
2	141A1210	3/8 X 1 1/4 UNC FLANGE BOLT (GR 8) O&P	4
3	13022077	AIR FTG / PLUG (1/4 NPT)	1
4	13022078	AIR FTG / PLUG (3/8 NPT)	3
-	15001231	BOX (10.00 X 4.00 X 4.00)	1
-	15001243	BOX(32.75 X 11.00 X 11.00)	1
5	80000483	BRACKET-MOUNT, TANK	2
6	13022016	BUSHING-REDUCER 3/8 M-NPT TO 1/4 F-NPT	1
7	13022018	BUSHING-REDUCER, 1/2 M-NPT - 1/4 F-NPT	1
8	13010513	DRAIN COCK - WING HANDLE	1
9	15060555	HEAVY HEX FLNG SCR M12 X 1.75 X 30 CLS 10.9	4
10	13010594	TANK-AIR, 8 X 27	1
11	13025143	TEE-BRANCH, 1/4 M-NPT, 3/8 TUBE	1



4. INSTALLATION INSTRUCTIONS


- Mount air tank as shown to brackets. Tighten until secure.
- Mount air tank assembly to suspension as shown in FIG. 1.
-  **TORQUE** 3/8" mount bolts to 25-35 FT-LBS.
- Keep drain fitting down.
- Plumb as needed.

FIG. 1

