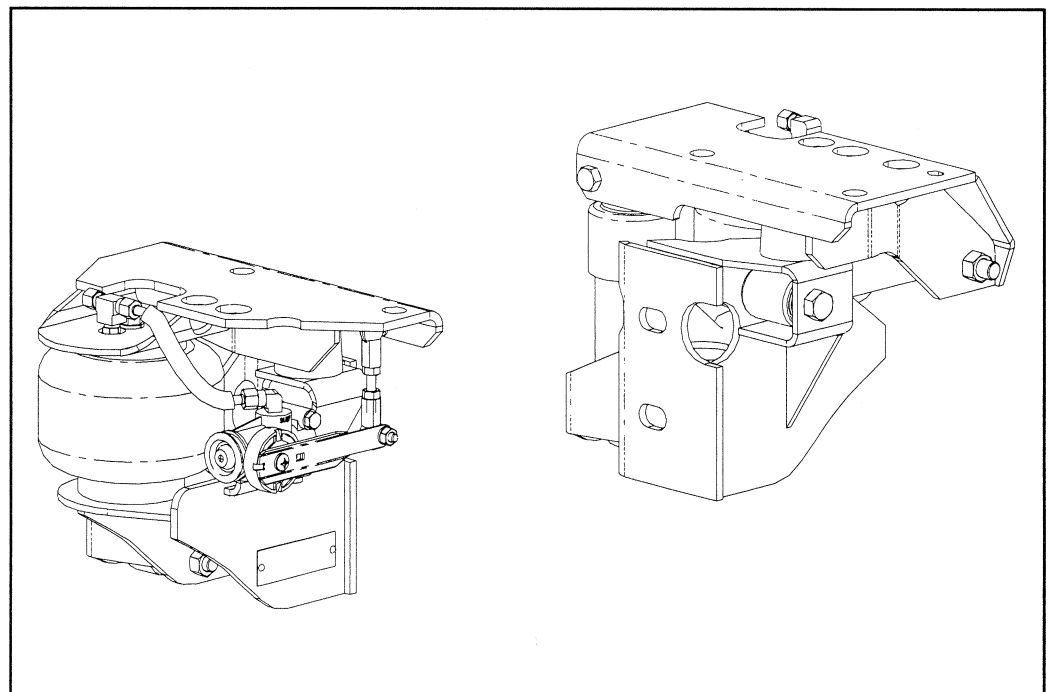




INSTALLATION INSTRUCTIONS PARTS LIST

FRTAS64-A (2912-E000)



Link Mfg. Ltd.
223 15th St. N.E.
Sioux Center, IA USA
51250-2120

(712) 722-4874
Fax (712) 722-4876

**QUESTIONS?
CALL CUSTOMER
SERVICE
1-800-222-6283**

The **BUNKMATE MODEL FRTAS64-A** fits most 64 inch Able Body sleepers installed on FLD112, and FLD120 Freightliner Series Conventional Tractors, **MANUFACTURED AFTER August, 1993**. It replaces the original rear sleeper mount, Freightliner Part No. A22-38412. **IMPORTANT: This unit may not work on trucks with 23" shimmed fuel tanks. Contact Link to insure proper installation.**

UNIT WEIGHT: 30.5 LB.

NET WEIGHT ADDED: 14.1 LB.

BUNKMATE MODEL FRTAS64-A

Review the Parts List on page 3 to become familiar with the different components of the BUNKMATE.

IMPORTANT: Due to many chassis variables caused by installation of special equipment or options, the fit of the FRTAS64-A BUNKMATE may be affected and should be evaluated before beginning installation.

IMPORTANT: Installation of the BUNKMATE system will allow the sleeper to move freely. Before starting installation, check clearances between the sleeper and any objects the sleeper may contact when it moves (1 1/2 inches of clearance should be sufficient).

A. Remove the 5/8 mount bolts from the top of each mount. Securely prop up the sleeper and remove the original mounts. **NOTE:** Save the frame mount bolts for reuse (Fig. 1).

B. Trucks Manufactured before August, 1994 will require the installation of Aftermarket Mount Plates.

- Remove the four foremost huck fasteners from each side on the rear of the sleeper. (Fig. 2).
- Using the 5/16 mount hardware (Nos. 14, 22, and 27 from the parts list) securely fasten the Aftermarket Mount Plates to the sleeper (Be sure the slots in the Mount Plates are to the front of the sleeper).
- **DO NOT INSTALL** a fastener in the foremost outboard hole on the driver side, this hole will be used later.

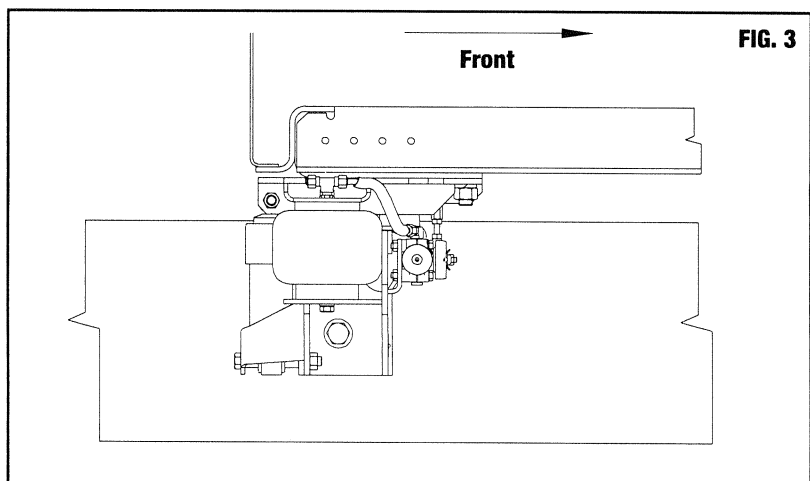
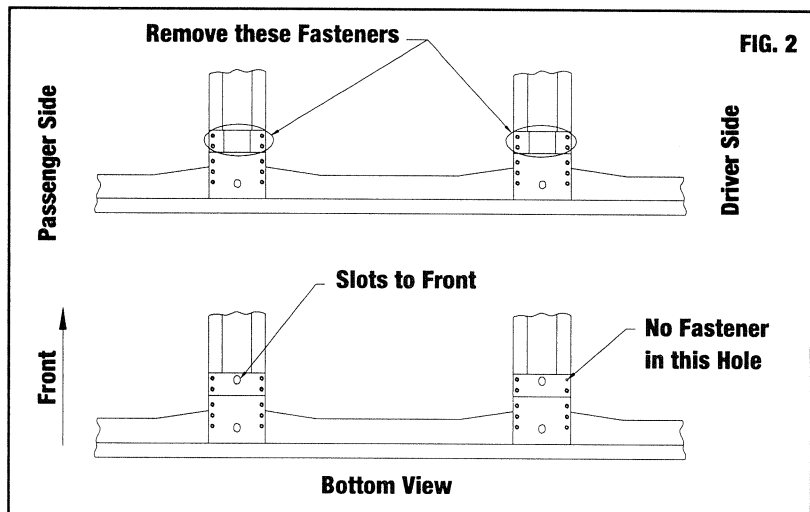
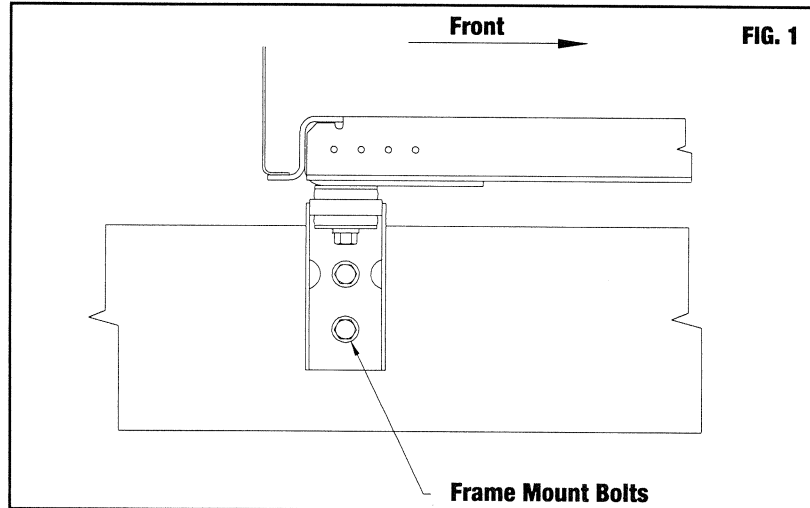
Trucks Manufactured after August, 1994 will require the removal of the huck fastener from the foremost outboard hole on the driver side.

Trucks Manufactured after August, 1996 may require the use of the Mount Spacer (No. 7 from the part list) on the foremost outboard hole on the drivers side.

C. Loosely fasten the Unit Bottoms to the frame using the original frame mount bolts.

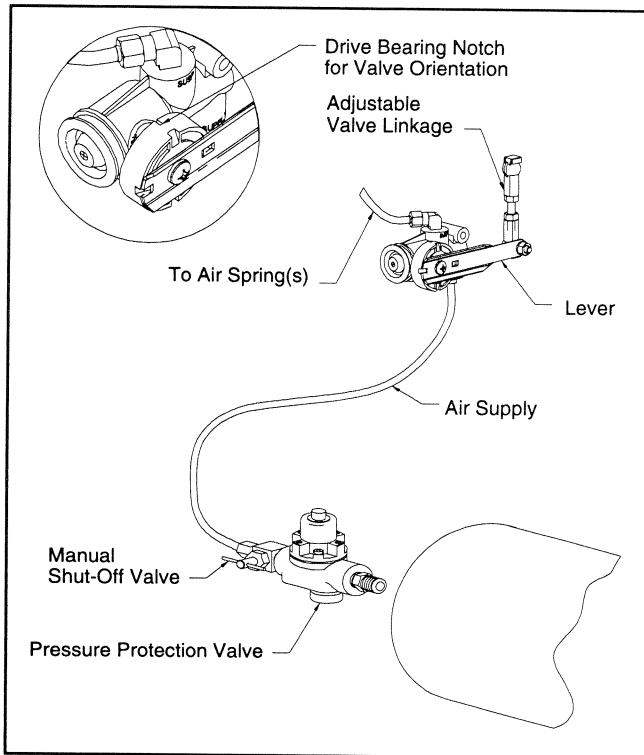
D. Fasten the Unit Tops to the sleeper using the Mount Fastener Strap and 5/8 mount hardware (Nos. 19, 26, and 36 from the parts list). Install the 5/16 mount hardware (Nos. 15, 22, 27, and 32 from the parts list) in the foremost outboard hole on the driver side. **SECURELY TIGHTEN ALL FASTENERS.** Lower the sleeper completely.

E. See page 2 for plumbing instructions and height adjustments.



PLUMBING INSTRUCTIONS

WARNING: THE BUNKMATE MUST BE SUPPLIED FROM A PRESSURE PROTECTED CIRCUIT. CONNECT THE BUNKMATE DIRECTLY TO THE MAIN AIR TANK USING THE PRESSURE PROTECTION KIT PROVIDED BY LINK MFG. (LINK PART NO. 1350-0000). DO NOT USE AN AIR PRESSURE REGULATOR!



WARNING: USE CAUTION WHEN INSTALLING OR PERFORMING MAINTENANCE ON BUNKMATE, SO THAT CAB MOVEMENT DOES NOT CAUSE INJURY.

A. The BUNKMATE must be connected directly to the main air tank. With the tank at 0 p.s.i., remove the existing plug or fitting from the desired port.

B. Apply joint compound to the fittings and install the pressure protection kit. **DO NOT USE TEFLON TAPE.** Be sure that the arrows on the valve are pointing in the direction of air flow and the vent hole is pointed down. **NOTE:** Additional fittings/reducers may be required to attach the hex nipple to the main air tank.

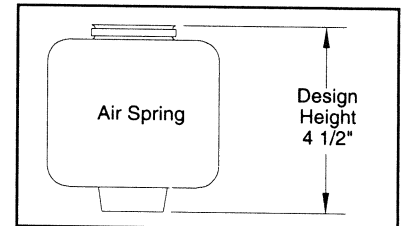
C. Run the 1/4" airline from the shut-off valve to the BUNKMATE. Be sure that the airline has enough clearance so that there are no pinch points that may restrict or cut the airline. Secure the airline using the cable ties supplied by Link Mfg.

D. Tighten all plumbing fittings. Then, with the system at operating pressure (90 to 110 p.s.i.), open the Manual Shut-off Valve to supply air to the BUNKMATE. Check the system for air leaks.

E. Check for proper operation of the height control valve. Disconnect the valve linkage from the lever. Push the lever down 45°, air should flow into the air spring(s). Return the lever to the neutral position. Push the lever up 45°, air should exhaust from the air spring(s). Return the lever to the neutral position; no air should flow. Reconnect the valve linkage to the lever.

HEIGHT ADJUSTMENTS

Measure the design height of the air spring(s). The height should be 4 1/2 inches ± 1/16. To change the height, disconnect one end of the valve linkage and adjust accordingly. Tighten the lock nuts on the valve linkage.

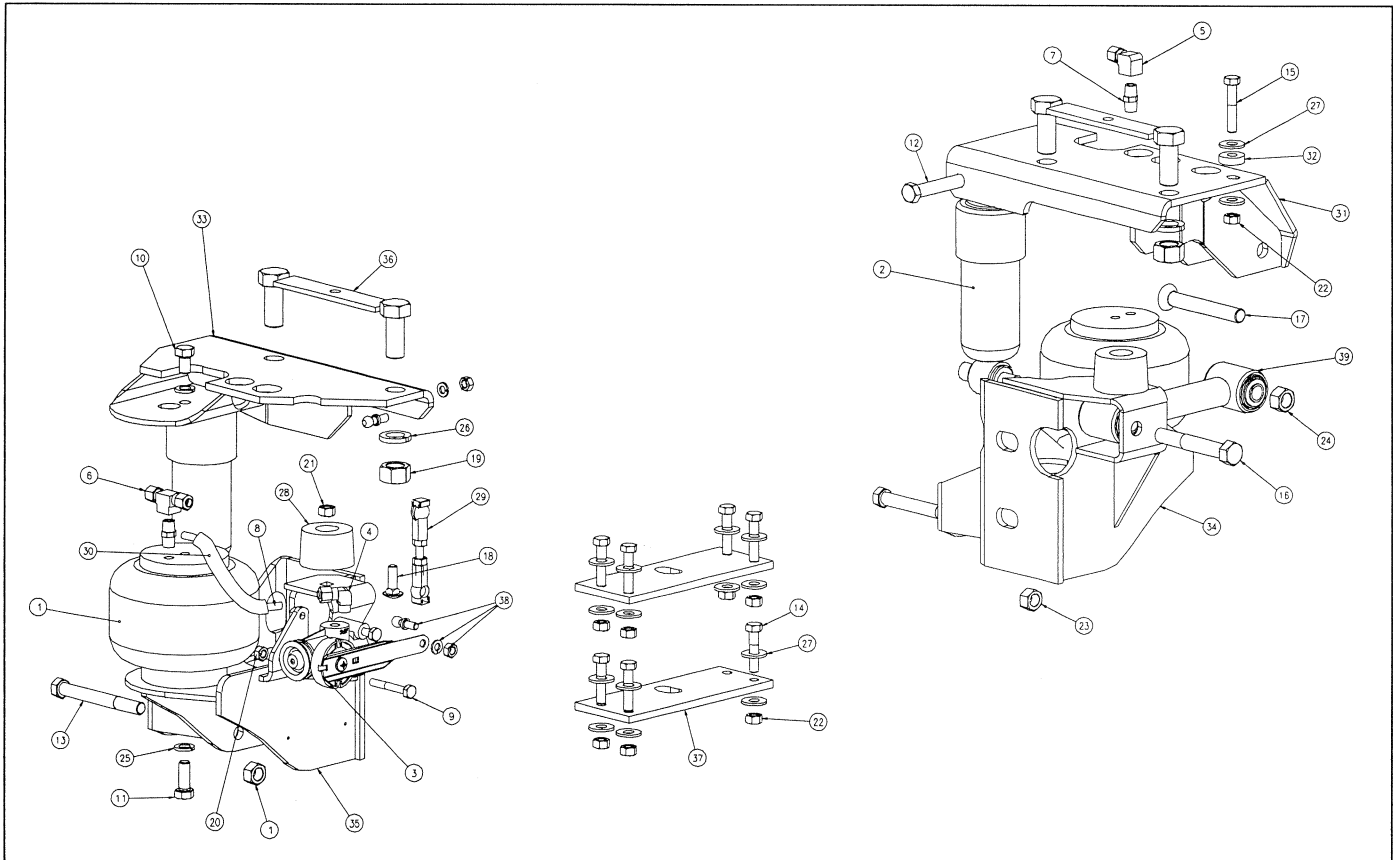


MAINTENANCE

BUNKMATES need no lubrication and little maintenance. The following components should be checked at the time the truck is being serviced. However, immediate corrective action should be taken if a serious malfunction occurs.

COMPONENT	POSSIBLE PROBLEM	CORRECTIVE ACTION	TORQUE
Airlines	Air leaks	Replace airline	Compression Nut Hand Tight + 1 Turn
Fittings	Air leaks	Remove fitting and apply fresh joint compound. Reinstall fitting, but Do Not Overtighten. Do not use Teflon tape.	Threaded into: Metal Plastic 15 Hand Tight Ft. Lbs. + 1 Turn
Air Springs	A. Improper height B. Air leakage	A. Adjust valve linkage to maintain proper air spring height. B. Replace air spring.	Size Metal Plastic 3/8 25 Ft. Lbs 4 Ft. Lbs 1/2 28 Ft. Lbs 10 Ft. Lbs 3/4 30 Ft. Lbs 10 Ft. Lbs
Height Control Valve*	Air spring(s) will not inflate when weight is added to the cab; OR Air spring(s) will not deflate when weight is removed from the cab.	A. Inspect valve to insure drive bearing notch is located on "SUSP" port side of valve. If not, loosen lever screw (but do not remove completely) and pull lever loose from drive bearing, rotate drive bearing until the drive bearing notch is in the correct position and resecure lever by tightening lever screw. B. Replace Valve.	1/4 Mount Fasteners 10 Ft. Lbs. Bearing Screw 40-50 In. Lbs.
Shock Absorber	Insufficient dampening effect	Replace shocks	45 Ft. Lbs.
Lateral Control Rod	A. Loose nuts on lateral control rod bolts B. Worn bushings	A. Tighten securely to clamp the inner sleeve. B. Replace hinge arm.	40 Ft. Lbs.

IMPORTANT: Periodically check the tightness of all fasteners.



**BUNKMATE® MODEL FRTAS64-A
PARTS LIST**

ITEM #	PART #	PART DESCRIPTION	QTY.	ITEM #	PART #	PART DESCRIPTION	QTY.
1	1102-0022	Spring-Air	2	19	1470-2000	5/8 UNC Hex Nut (Grade B)	4
2	1201-1044	Shock Absorber	2	20	1476-0800	1/4 UNC Hex Center Lock Nut (Grade B)	2
3	1350-0111	Assembly-Height Control Valve	1	21	1476-1000	5/16 UNC Hex Center Lock Nut (Grade B)	2
4	1302-1105	Elbow, 1/4 TB 1/8 M-NPT	1	22	1477-1001	5/16 UNF Hex Top Lock Nut (Grade C)	8
5	1302-1131	Elbow, 1/4 TB 1/8 F-NPT	1	23	1477-1400	7/16 UNF Hex Center Lock Nut (Grade B)	4
6	1302-1150	Branch Tee, 1/4 TB 1/8 F-NPT	1	24	1477-1601	1/2 UNF Hex Top Lock Nut (Grade C)	2
7	1302-2064	Hex Nipple, 1/4 TB 1/8 M-NPT	2	25	1485-1200	3/8 Lock Washer	4
8	1302-0090	0.250 Airline	4.8 ft.	26	1485-2000	5/8 Lock Washer	4
9	1401-0814	1/4 X 1 3/4 UNC Hex Cap Screw (Grade 5)	2	27	1487-1000	5/16 Type A Plain Washer	16
10	1401-1205	3/8 X 5/8 UNC Hex Cap Screw (Grade 5)	2	28	1500-0071	Bumper-Jounce, 1.25	2
11	1401-1208	3/8 X 1 UNC Hex Cap Screw (Grade 5)	2	29	1500-0237	Linkage-Valve, Height Control (2.88)	1
12	1403-1428	7/16 X 3 1/2 UNF Hex Cap Screw (Grade 5)	2	30	1500-0435	Corrugated Loom	0.8 ft.
13	1403-1430	7/16 X 3 3/4 UNF Hex Cap Screw (Grade 5)	2	31	2912-1000	Unit Top-Driver	1
14	1404-1012	5/16 X 1 1/2 UNF Hex Cap Screw (Grade 8)	7	32	2912-1008	Spacer-Mount	1
15	1404-1014	5/16 X 1 3/4 UNF Hex Cap Screw (Grade 8)	1	33	2912-2000	Unit Top-Passenger	1
16	1404-1626	1/2 X 3 1/4 UNF Hex Cap Screw (Grade 8)	1	34	2912-3000	Unit Bottom-Driver	1
17	1420-1628	1/2 X 3 1/2 UNF SOC Flat CSK HD Cap Screw	1	35	2912-4100	Unit Bottom-Passenger	1
18	1435-1008	5/16 X 1 UNC RND HD SQ NK Bolt (Grade 5)	2	36	2912-5000	Mount-Fastener Strap	2
				37	2912-5002	Plate-Mount, Aftermarket	2
				38	2991-0026	Kit-Pivot Ball	2
				39	2993-2019	Lateral Control Rod	1
				Not Shown	1350-0000	Pressure Protection Kit	1