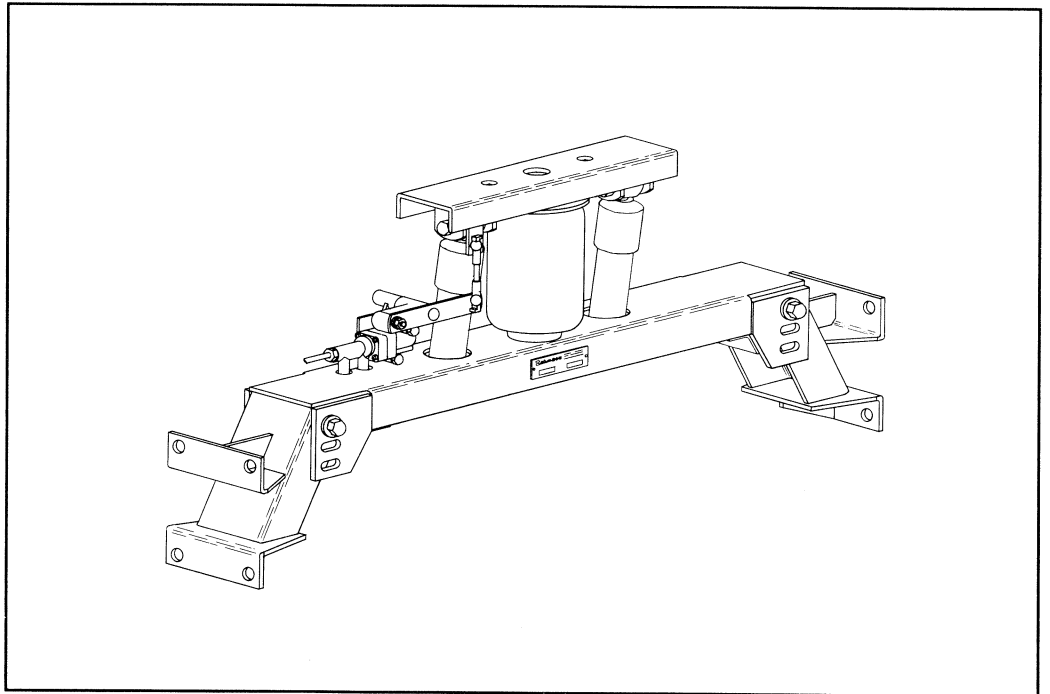




# INSTALLATION INSTRUCTIONS PARTS LIST

## MCRS600 (2620-0000)



Link Mfg. Ltd.  
223 15th St. N.E.  
Sioux Center, IA USA  
51250-2120

(712) 722-4874  
Fax (712) 722-4876

**QUESTIONS?  
CALL CUSTOMER  
SERVICE  
1-800-222-6283**

The **CABMATE MODEL MCRS600** fits most Mack RS Model and Superliner tractors. It replaces the original rear cab support, Mack Part No.'s:

- 87QS39308 (one piece support)
- 30QS3247, 30QS39304, 30QS39305, (three piece support)
- 30QS3247, 30QS3236, 30QS3237, (three piece support)

UNIT WEIGHT: 32.0 LB.

NET WEIGHT ADDED: 2.8 LB.

# CABMATE MODEL MCRS600

Review the Parts List on page 3 to become familiar with the different components of the CABMATE.

**IMPORTANT:** Due to many chassis variables caused by installation of special equipment or options, the fit of the MCRS600 CABMATE may be affected and should be evaluated before beginning installation.

**IMPORTANT:** Installation of the CABMATE system will allow the cab to move freely. Before starting installation, check clearances between the cab and any objects the cab may contact when it moves (1 1/2 inches of clearance should be sufficient). The clearance of components that are affected by cab movement, such as exhaust and radiator systems, must also be evaluated.

**IMPORTANT:** Before beginning installation, measure the distance from the bottom of the cab to the frame. Then, check the CABMATE height and select the proper channel mount slots in the Unit Bottom to maintain the proper Air Spring Design Height of 7" (See Figure 3).

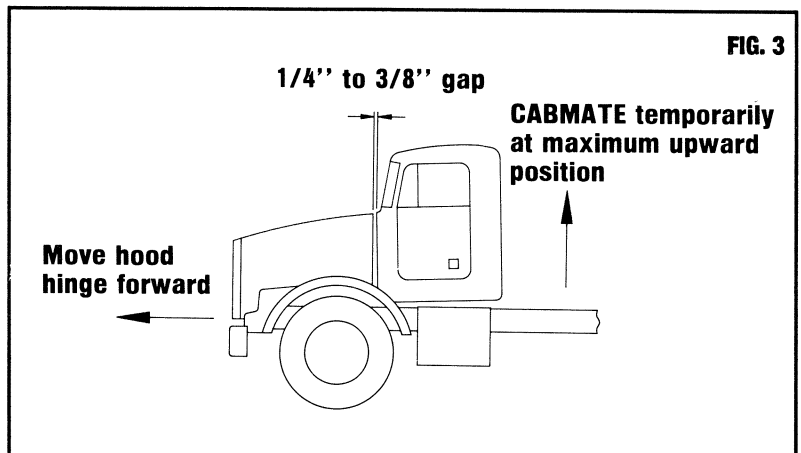
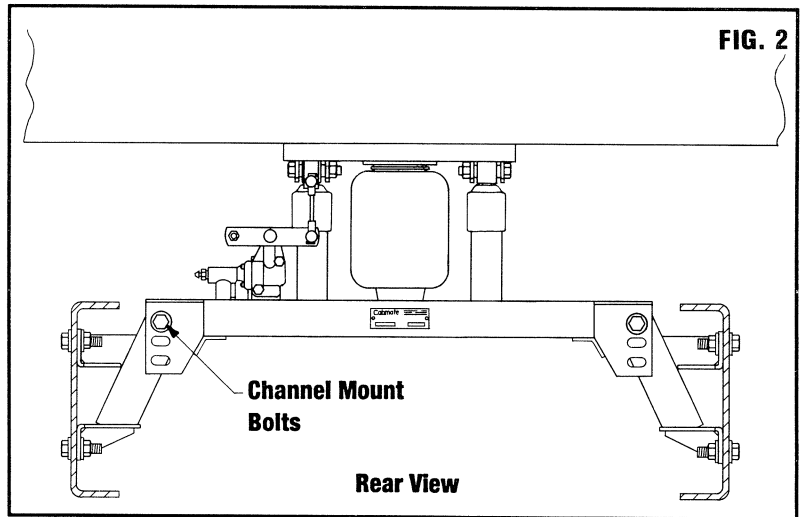
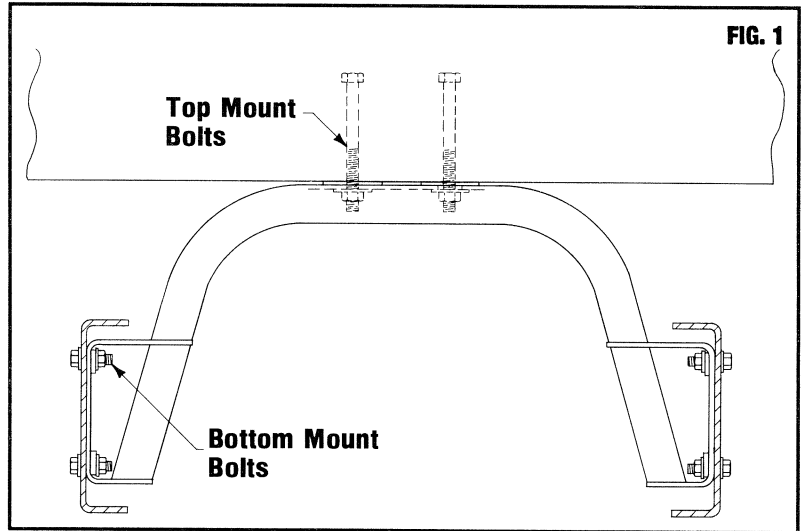
A. Remove the two mount bolts from the top of the stock mount. Securely prop up the cab and remove all stock mount parts. **NOTE: SAVE** the eight bottom mount bolts for later use. (Fig. 1)

B. Fasten the Mount Brackets to the truck frame using the bottom mount bolts. **NOTE: The Height Control Valve MUST** be on the drivers side of the truck.

C. Slowly lower the cab until it touches the top of the CABMATE. Fasten the Unit Top to the cab frame using the two 5/8" bolts supplied by Link Mfg., (No.'s 20, 21, and 22 on the Parts List). Center the Unit Top with the Unit Bottom and tighten the four channel mount bolts (Fig. 2). **SECURELY TIGHTEN ALL FASTENERS.** Lower the cab completely.

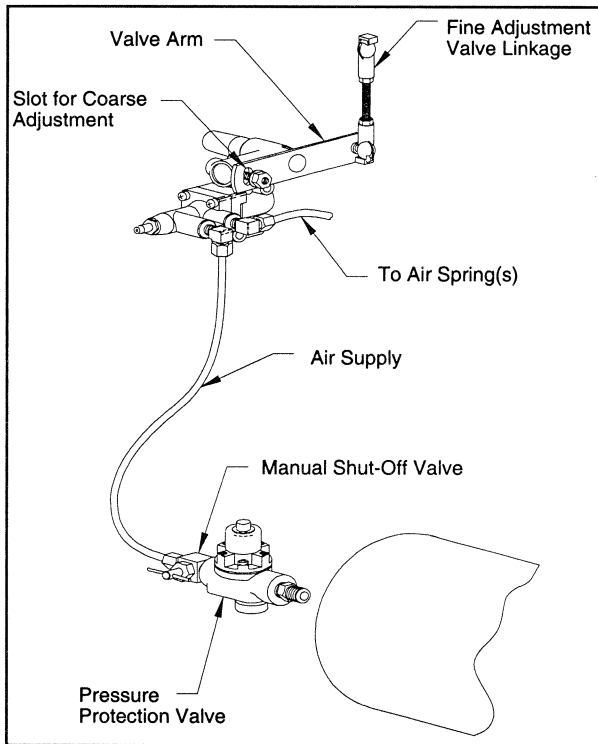
D. See page 2 for plumbing instructions and height adjustments.

E. **IMPORTANT:** After plumbing and height control adjustments are completed, temporarily adjust the CABMATE to its maximum upward position. There must be a 1/4" to 3/8" gap between the cab and the hood. Adjust the hood hinge forward as necessary (Fig. 3).



## PLUMBING INSTRUCTIONS

**WARNING: FOR SAFETY PURPOSES THE CABMATE MUST BE SUPPLIED FROM A PRESSURE PROTECTED CIRCUIT. IN THE EVENT OF AN AIR LEAK IN THE CAB SUSPENSION, FAILURE TO PROVIDE A PRESSURE PROTECTED CIRCUIT MAY CAUSE LOSS OF AIR PRESSURE TO VITAL SYSTEMS ON THE VEHICLE.**



**WARNING: LOSS OR APPLICATION OF AIR PRESSURE TO CABMATE WILL CAUSE SUDDEN MOVEMENT OF THE CAB. PRIOR TO INSTALLING OR PERFORMING ANY MAINTENANCE, BLOCK UP THE CABMATE TO PREVENT THE POSSIBILITY OF INJURY.**

**WARNING: CONNECT THE CABMATE DIRECTLY TO THE MAIN AIR TANK. YOU WILL NEED AN AIR PRESSURE PROTECTION VALVE IN THE LINE. (INCLUDED IN THE PRESSURE PROTECTION KIT, LINK MFG. PART NO. 1350-0000). DO NOT USE AN AIR PRESSURE REGULATOR!**

**A.** With the tank at 0 p.s.i., remove the existing plug or fitting from the desired port.

**B.** Apply joint compound to the fittings and install the pressure protection kit. **DO NOT USE TEFLON TAPE.** Be sure that the arrows on the valve are pointing in the direction of air flow and the vent hole is pointed down. **NOTE:** Additional fittings/reducers may be required to attach the hex nipple to the main air tank.

**C.** Run the 1/4" airline from the shut-off valve to the CABMATE. Be sure that the airline has enough clearance so that there are no pinch points that may restrict or cut the airline. Secure the airline using the cable ties supplied by Link Mfg.

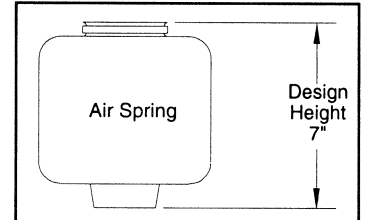
**D.** Tighten all plumbing fittings. Then, with the system at operating pressure (90 to 110 p.s.i.), open the Manual Shut-off Valve to supply air to the CABMATE. (There is an approximate 5 second delay in the Height Control Valve.) Check the system for air leaks.

**E.** Check for proper operation of the height control valve. Disconnect the valve linkage from the valve arm. Push the valve arm down 45° and hold for 5 seconds, air should be flowing into the air spring(s). Return the valve

arm to the neutral position. Push the valve arm up 45° and hold for 5 seconds, air should be evacuating from the air spring(s). Return the valve arm to the neutral position; no air should flow. Reconnect the valve linkage to the valve arm.

### HEIGHT ADJUSTMENTS

Measure the design height of the air spring(s). The height should be 7 inches ± 1/16. To change the height, disconnect one end of the valve linkage and adjust accordingly. Tighten the lock nuts on the valve linkage. The valve arm has a slot which will allow for coarse adjustment also. (See diagram above.)



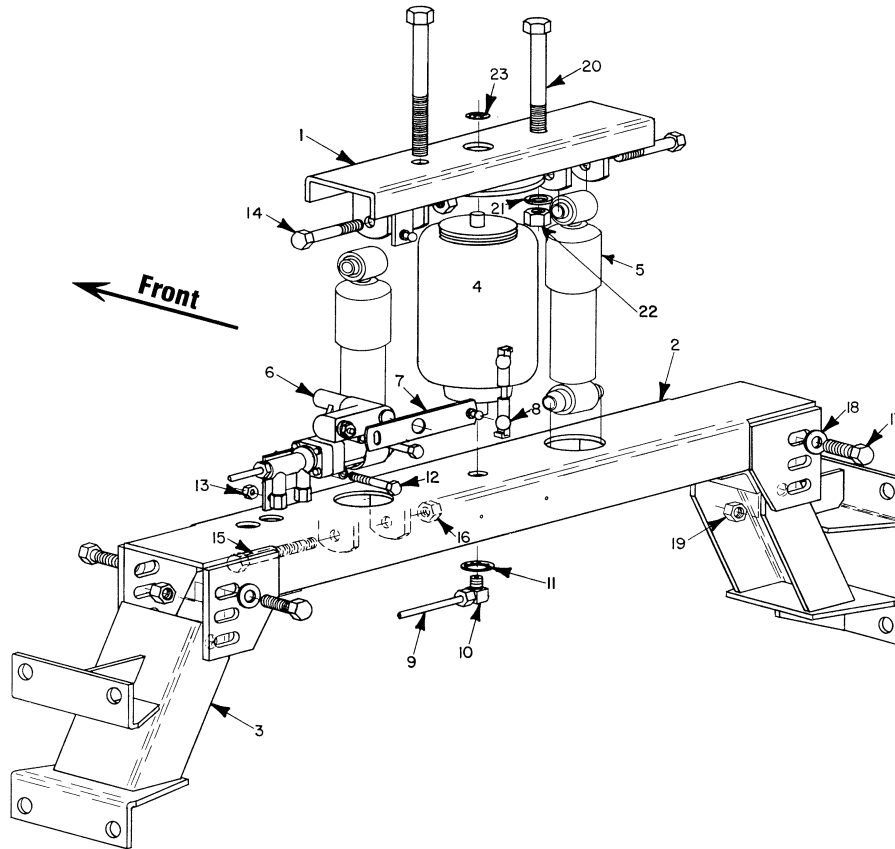
### MAINTENANCE

CABMATES need no lubrication and little maintenance. The following components should be checked at the time the truck is being serviced. However, immediate corrective action should be taken if a serious malfunction occurs.

COMPONENT	POSSIBLE PROBLEM	CORRECTIVE ACTION	TORQUE
<b>Airlines</b>	Air leaks	Replace airline	<b>Compression Nut</b> Hand Tight + 1 Turn
<b>Fittings</b>	Air leaks	Remove fitting and apply fresh joint compound. Reinstall fitting, but <b>Do Not Overtighten. Do not use Teflon tape.</b>	<b>AIR SPRING MATERIAL</b> <b>Metal</b> <b>Plastic</b> 15              Hand Tight Ft. Lbs.      + 1 Turn
<b>Air Springs</b>	<b>A.</b> Improper height <b>B.</b> Air leakage	<b>A.</b> Adjust valve linkage to maintain proper air spring height. <b>B.</b> Replace air spring.	<b>Size</b> <b>Metal</b> <b>Plastic</b> <b>3/8</b> 25 Ft. Lbs   4 Ft. Lbs <b>1/2</b> 28 Ft. Lbs   10 Ft. Lbs <b>3/4</b> 30 Ft. Lbs   10 Ft. Lbs
<b>Height Control Valve*</b>	<b>A.</b> Air leakage from joint between valve halves. <b>B.</b> Air springs will not inflate when weight is added to the cab. <b>C.</b> Air springs will not deflate when weight is removed from the cab.	<b>A.</b> Tighten 4 Phillips head screws. <b>B.</b> Replace valve. <b>C.</b> Replace valve.	30 In. Lbs.  <b>1/4 Mount Fasteners</b> 10 Ft. Lbs.
<b>Shock Absorber</b>	Insufficient dampening effect	Replace shocks	45 Ft. Lbs.
<b>Lateral Control Rod</b>	<b>A.</b> Loose nuts on lateral control rod bolts <b>B.</b> Worn bushings	<b>A.</b> Tighten securely to clamp the inner sleeve. <b>B.</b> Replace lateral control rod.	40 Ft. Lbs.

**IMPORTANT:** Periodically check the tightness of all fasteners.

\* **Note:** If you attempt to disassemble or adjust fittings on the height control valve, it will void your warranty. Contact Link Manufacturing for assistance.



**CABMATE® MODEL MCRS600  
PARTS LIST**

ITEM #	PART #	PART DESCRIPTION	QTY.
1	2620-1000	Unit Top	1
2	2620-2000	Unit Bottom	1
3	2620-3000	Mount Bracket	2
4	1101-0042	Air Spring	1
5	1201-0012	Shock Absorber	2
6	1301-0011	Height Control Valve	1
7	2990-0700	Valve Arm	1
8	1500-0236	Valve Linkage	1
9	1302-0090	1/4 Air Line	10.7 ft.
10	1302-1105	Male Elbow	1
11	1500-0330	3/4 Retainer Ring	1
12	1401-0814	1/4 x 1 3/4 UNC Bolt	2
13	1476-0800	1/4 UNC Lock Nut	2
14	1403-1418	7/16 x 2 1/4 UNF Bolt	2
15	1403-1424	7/16 x 3 UNF Bolt	2
16	1477-1400	7/16 UNF Lock Nut	4
17	1401-1610	1/2 x 1 1/4 UNC Bolt	4
18	1487-1600	1/2 Flat Washer	4
19	1476-1600	1/2 UNC Lock Nut	4
20	1401-2048	5/8 x 6 UNC Bolt	2
21	1485-2000	5/8 Lock Washer	2
22	1470-2000	5/8 UNC Nut	2
23	1500-0320	1/2 Retainer Ring	1
Not Shown	1350-0000	Pressure Protection Kit	1