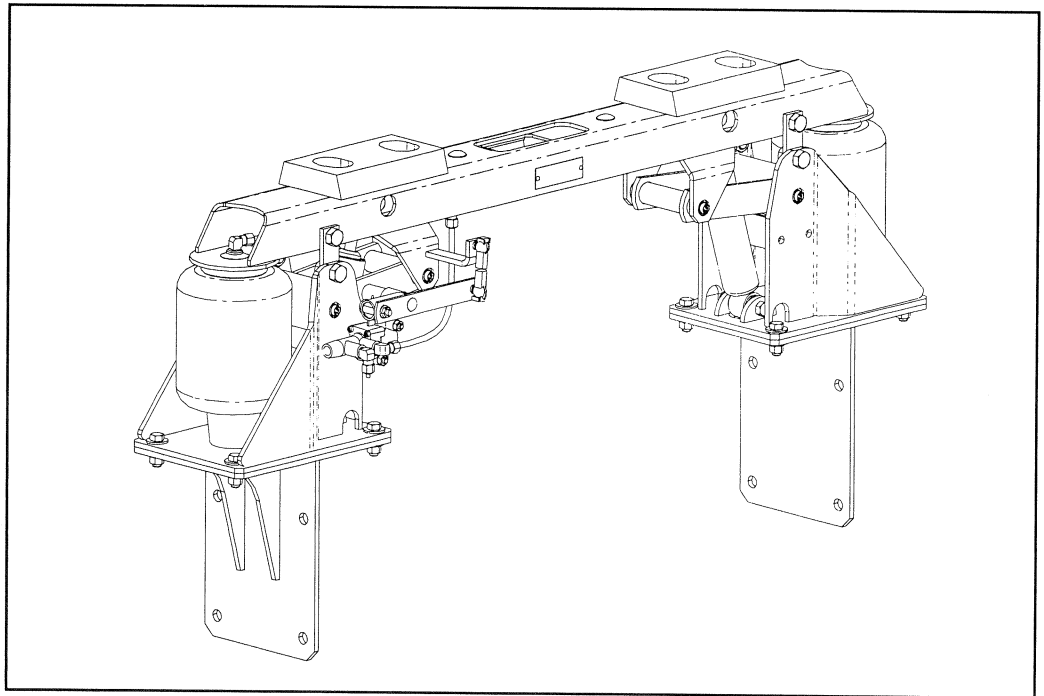




INSTALLATION INSTRUCTIONS PARTS LIST

KW1102-B (2500-A000)



Link Mfg. Ltd.
223 15th St. N.E.
Sioux Center, IA USA
51250-2120

(712) 722-4874
Fax (712) 722-4876

**QUESTIONS?
CALL CUSTOMER
SERVICE
1-800-222-6283**

The **CABMATE MODEL KW1102-B** fits Kenworth Cabovers, using the three point mount system with one hydraulic latch centered on the rear cab support. **This unit DOES NOT fit non-sleeper cabs.**

UNIT WEIGHT: 95 LB.

NET WEIGHT ADDED: 73 LB.

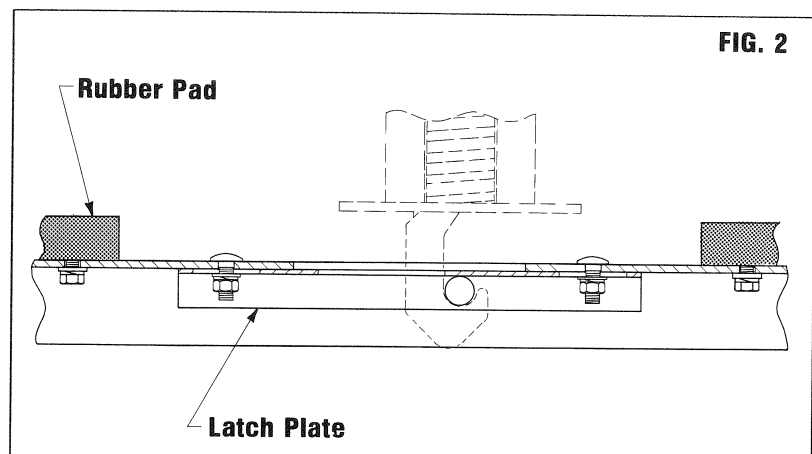
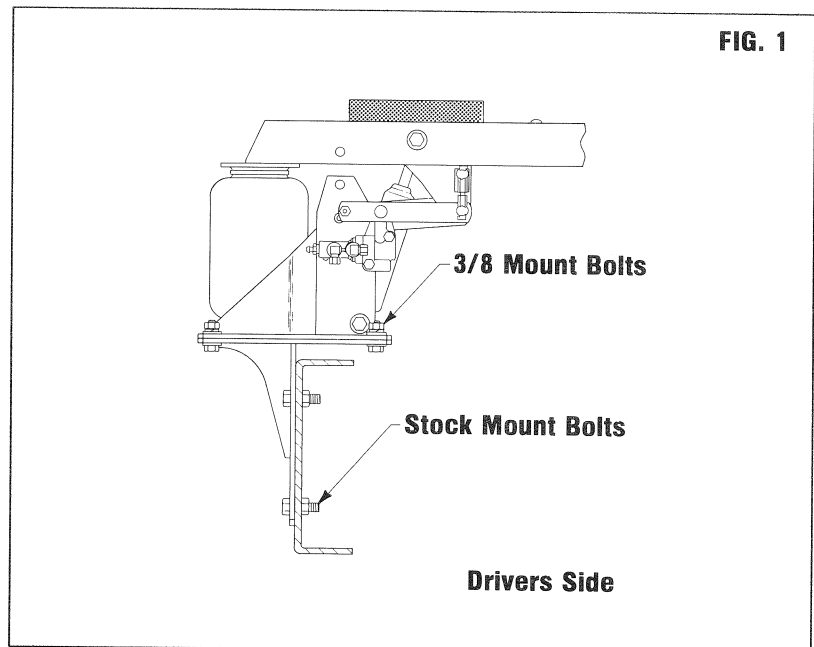
CABMATE MODEL KW1102-B

Review the Parts List on page 3 to become familiar with the different components of the CABMATE.

IMPORTANT: Due to many chassis variables caused by installation of special equipment or options, the fit of the KW1102-B CABMATE may be affected and should be evaluated before beginning installation.

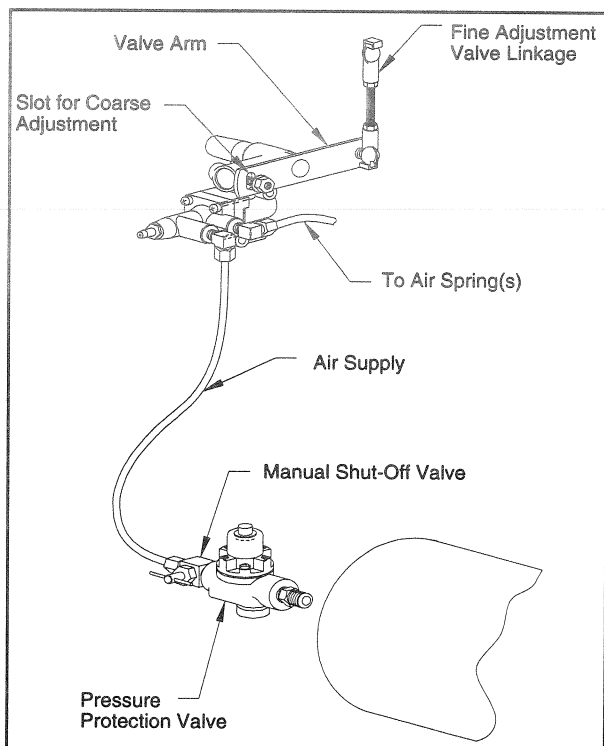
IMPORTANT: After the CABMATE is installed, the cab of the truck must be free to move. Before raising the cab to begin installation, check clearances between the cab and any objects the cab may contact when it moves downward or to the rear. Two inches of clearance should be sufficient.

- A. Raise the cab and remove the original cab support hoop. **SAVE ALL** stock mount bolts for later use.
- B. Fasten the mount brackets to the frame using the stock mount bolts (Fig. 1). Loosely fasten the CABMATE to the mount brackets using the 3/8" mount bolts supplied by Link Mfg. (Item no.'s 23, 25, 27 and 28 from the parts list on page 3.)
- C. Lower the cab slowly and align the Rubber Pads and the CABMATE with the cab. Check the Latch Plate for full engagement with the latch hook (Fig. 2). **NOTE:** The Latch Plate can be adjusted laterally or reversed if needed. **SECURELY TIGHTEN ALL FASTENERS.**
- D. Remove the four red Lock-up Straps and the six 1/2" bolts and store them in the truck. They must be used in the event of a system malfunction.
- E. Remove the original shift plate pad. Clean the shift tower and attach the Foam Shift Plate Pad supplied by Link Mfg.
- F. See page 2 for plumbing instructions and height adjustments.



PLUMBING INSTRUCTIONS

WARNING: FOR SAFETY PURPOSES THE CABMATE MUST BE SUPPLIED FROM A PRESSURE PROTECTED CIRCUIT. IN THE EVENT OF AN AIR LEAK IN THE CAB SUSPENSION, FAILURE TO PROVIDE A PRESSURE PROTECTED CIRCUIT MAY CAUSE LOSS OF AIR PRESSURE TO VITAL SYSTEMS ON THE VEHICLE.



WARNING: LOSS OR APPLICATION OF AIR PRESSURE TO CABMATE WILL CAUSE SUDDEN MOVEMENT OF THE CAB. PRIOR TO INSTALLING OR PERFORMING ANY MAINTENANCE, BLOCK UP THE CABMATE TO PREVENT THE POSSIBILITY OF INJURY.

WARNING: CONNECT THE CABMATE DIRECTLY TO THE MAIN AIR TANK. YOU WILL NEED AN AIR PRESSURE PROTECTION VALVE IN THE LINE. (INCLUDED IN THE PRESSURE PROTECTION KIT, LINK MFG. PART NO. 1350-0000). DO NOT USE AN AIR PRESSURE REGULATOR!

A. With the tank at 0 p.s.i., remove the existing plug or fitting from the desired port.

B. Apply joint compound to the fittings and install the pressure protection kit. **DO NOT USE TEFLON TAPE.** Be sure that the arrows on the valve are pointing in the direction of air flow and the vent hole is pointed down. **NOTE:** Additional fittings/reducers may be required to attach the hex nipple to the main air tank.

C. Run the 1/4" airline from the shut-off valve to the CABMATE. Be sure that the airline has enough clearance so that there are no pinch points that may restrict or cut the airline. Secure the airline using the cable ties supplied by Link Mfg.

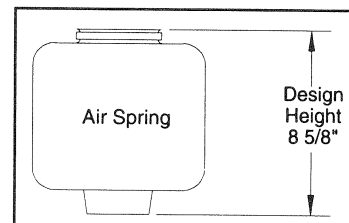
D. Tighten all plumbing fittings. Then, with the system at operating pressure (90 to 110 p.s.i.), open the Manual Shut-off Valve to supply air to the CABMATE. (There is an approximate 5 second delay in the Height Control Valve.) Check the system for air leaks.

E. Check for proper operation of the height control valve. Disconnect the valve linkage from the valve arm. Push the valve arm down 45° and hold

for 5 seconds, air should be flowing into the air spring(s). Return the valve arm to the neutral position. Push the valve arm up 45° and hold for 5 seconds, air should be evacuating from the air spring(s). Return the valve arm to the neutral position; no air should flow. Reconnect the valve linkage to the valve arm.

HEIGHT ADJUSTMENTS

Measure the design height of the air spring(s). The height should be 8 5/8 inches \pm 1/8. To change the height, disconnect one end of the valve linkage and adjust accordingly. Tighten the lock nuts on the valve linkage. The valve arm has a slot which will allow for coarse adjustment also. (See diagram above.)



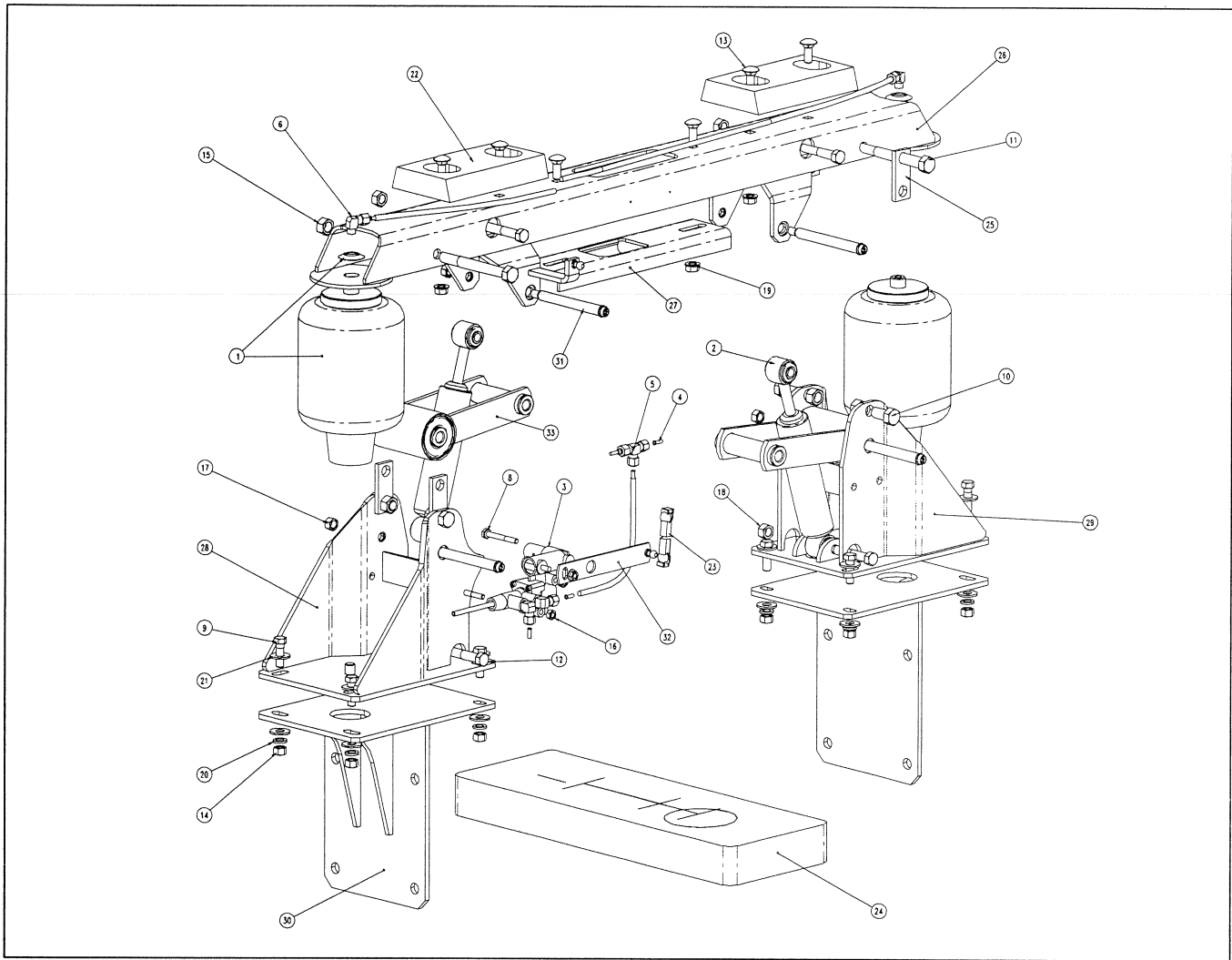
MAINTENANCE

CABMATES need no lubrication and little maintenance. The following components should be checked at the time the truck is being serviced. However, immediate corrective action should be taken if a serious malfunction occurs.

COMPONENT	POSSIBLE PROBLEM	CORRECTIVE ACTION	TORQUE
Airlines	Air leaks	Replace airline	Compression Nut Hand Tight + 1 Turn
Fittings	Air leaks	Remove fitting and apply fresh joint compound. Reinstall fitting, but Do Not Overtighten. Do not use Teflon tape.	AIR SPRING MATERIAL Metal 15 Ft. Lbs. Plastic Hand Tight + 1 Turn
Air Springs	A. Improper height B. Air leakage	A. Adjust valve linkage to maintain proper air spring height. B. Replace air spring.	Size Metal Plastic 3/8 25 Ft. Lbs 4 Ft. Lbs 1/2 28 Ft. Lbs 10 Ft. Lbs 3/4 30 Ft. Lbs 10 Ft. Lbs
Height Control Valve*	A. Air leakage from joint between valve halves. B. Air springs will not inflate when weight is added to the cab. C. Air springs will not deflate when weight is removed from the cab.	A. Tighten 4 Phillips head screws. B. Replace valve. C. Replace valve.	30 In. Lbs. 1/4 Mount Fasteners 10 Ft. Lbs.
Shock Absorber	Insufficient dampening effect	Replace shocks	45 Ft. Lbs.
Hinge Arm	A. Loose nuts on hinge arm bolts B. Worn bushings	A. Tighten securely. B. Replace hinge arm.	25 Ft. Lbs.

IMPORTANT: Periodically check the tightness of all fasteners.

* **Note:** If you attempt to disassemble or adjust fittings on the height control valve, it will void your warranty. Contact Link Manufacturing for assistance.



CABMATE® MODEL KW1102-B

PARTS LIST

ITEM #	PART #	PART DESCRIPTION	QTY.	ITEM #	PART #	PART DESCRIPTION	QTY.
1	1101-0043	Air Spring With Attachments	2	17	1476-1201	3/8 UNC Hex Top Lock Nut (Grade C)	4
2	1202-0032	Shock Absorber	2	18	1477-1400	7/16 UNf Hex Center Lock Nut (Grade B)	4
3	1301-0020	Height Control Valve	1	19	1480-1201	3/8 UNC Top Lock Flange Nut (Grade F)	6
4	1302-1038	.25 Tube Support	7	20	1485-1200	3/8 Lock Washer	8
5	1302-1083	Union Tee, 1/4 Tb	1	21	1487-1200	3/8 Type A Plain Washer	16
6	1302-1105	Elbow, 1/4 Tb 1/8 M-NPT	2	22	1500-0001	Mount Pad	2
7	1302-0090	.25 Airline (13.00)	4.2'	23	1500-0231	Linkage-Valve, Height Control (2.13)	1
8	1401-0816	1/4 X 2 UNC Hex Cap Screw (Grade 5)	2	24	1500-0410	Shift Plate Pad	1
9	1401-1210	3/8 X 1 1/4 UNC Hex Cap Screw (Grade 5)	8	25	2500-0001	Lock Up Strap	4
10	1401-1608	1/2 X 1 UNC Hex Cap Screw (Grade 5)	4	26	2500-1100	Unit Top	1
11	1401-1636	1/2 X 4 1/2 UNC Hex Cap Screw (Grade 5)	2	27	2500-2100	Latch Plate	1
12	1403-1418	7/16 X 2 1/4 UNF Hex Cap Screw (Grade 5)	4	28	2500-4000	Unit Bottom Valve Side	1
13	1435-1208	3/8 X 1 UNC Rnd Hd Sq Nk Bolt (Grade 5)	6	29	2500-5000	Unit Bottom Non-Valve Side	1
14	1470-1200	3/8 UNC Hex Nut (Grade B)	8	30	2505-2000	Unit Mount	2
15	1470-1600	1/2 UNC Hex Nut (Grade B)	6	31	2990-0501	4.25 Hinge Arm Bolt Sub-Assembly	4
16	1476-0800	1/4 UNC Hex Center Lock Nut (Grade B)	2	32	2990-0500	Arm-Valve (4.00 Std)	1
				33	2992-2008	Hinge Arm, Type B (6.000)	2
				Not Shown	1350-0000	Kit-Protection, Pressure	1