

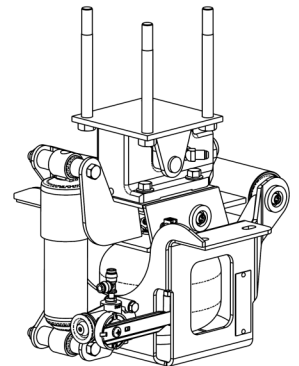
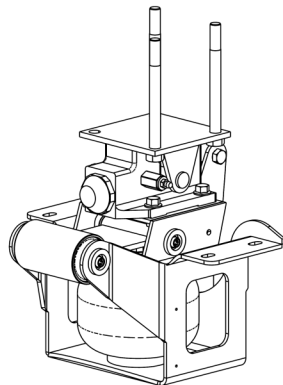


Cabmate®
Cab Air Suspension

INSTALLATION INSTRUCTIONS

PARTS LIST

NAV9876 (2492A000)



Link Mfg. Ltd.
223 15th St. N.E.
Sioux Center, IA USA
51250-2120

(712) 722-4874
Fax (712) 722-4876

**QUESTIONS?
CALL CUSTOMER
SERVICE
1-800-222-6283**

The **CABMATE MODEL NAV9876** FITS Navistar 9670, 9700, and 9800 Cabovers with 89- and 110-inch cabs built after 1981. It replaces the original upper and lower latch brackets, Navistar part no. 503787C1 and 503751C94.

UNIT WEIGHT: 69.8 LB.

NET WEIGHT ADDED: 16.2 LB.

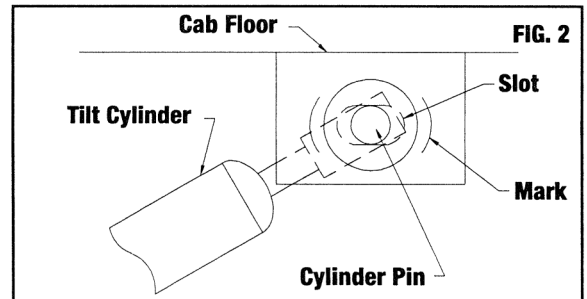
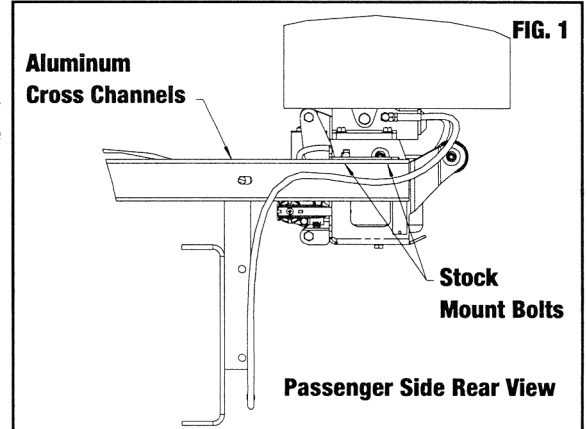
CABMATE MODEL NAV9876

Review the Parts List on page 3 to become familiar with the different components of the CABMATE.

IMPORTANT: Due to many chassis variables caused by installation of special equipment or options, the fit of the NAV9876 CABMATE may be affected and should be evaluated before beginning installation.

IMPORTANT: After the CABMATE is installed, the cab of the truck must be free to move. Before raising the cab to begin installation, check clearances between the cab and any objects the cab may contact when it moves downward or to the rear. Two inches of clearance should be sufficient.

- A. Relocating of a Power Steering Reservoir, Air Dryer, and Junction Box may be required before beginning installation; see below for more information.
- B. Raise the cab and remove the hydraulic latch from the cab, and the lower latch brackets from the aluminum cross channels. **NOTE:** Save the original mount bolts of the lower latch brackets for later use (Fig. 1).
- C. With the Height Control Valve on the passenger side, loosely fasten both halves of the CABMATE crossmember mount brackets to the aluminum cross channels using the original mount bolts.
- D. Securely mount the Cab Mount Brackets (No. 33 on the parts list) to the sill of the cab using 1/2" bolts (No. 18 on the parts list).
- E. The hydraulic lines for the cab latch will need to be rerouted to the unit bottoms using the hose kit (No. 11, 12, and 13 on the parts list). Disconnect the original coupling and tie up, or remove the old lines. Route the new lines from the coupling of the rear port of the passenger side latch. Connect the two front ports of the latches together. **NOTE:** Assure all lines have enough loop to allow ends to move freely with the cab latches.
- F. Lower the cab until the latches almost contact the latching pins. Laterally align the unit bottoms directly below the latching pins. Lower the cab until the latches completely engage and tighten the original mount bolts. **SECURELY TIGHTEN ALL FASTENERS.**
- G. Affix the cylinder warning decal that is included with this instruction, to a location clearly visible from the cab tilt controls.
- H. See page 2 for plumbing instructions and height adjustments.



IMPORTANT: To ensure proper CABMATE operation, adjust the cylinder until the cylinder pin is approximately in the center of the slot, with the cab at proper operating height. To accomplish this, adjust the tilt cylinder so that the cylinder pin touches each end of the slot and mark the two locations (Fig. 2). Adjust the cylinder pin until it is halfway between the two marks. **THE CYLINDER PIN LOCATION SHOULD BE CHECKED EVERY TIME THE CAB IS LOWERED.**

POWER STEERING RESERVOIR RELOCATION

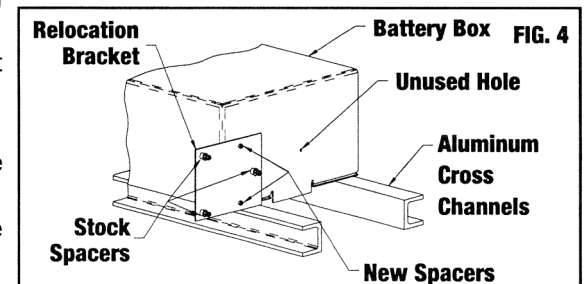
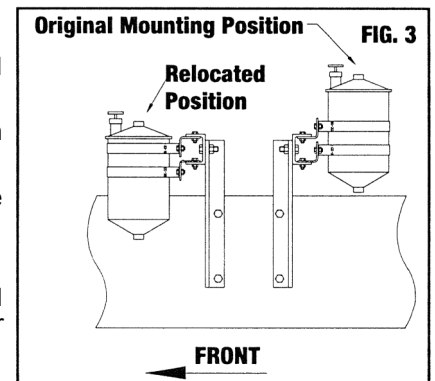
- A. To relocate the power steering reservoir, remove the reservoir and the two "L" shaped brackets from the aluminum cross channels.
- B. Reposition the brackets on the front cross channel with the "L" pointing down. Reattach the reservoir to the "L" brackets (Fig. 3).
- C. Loosen the reservoir mount straps and slide the reservoir down so the cab will not come in contact when it moves through its travel.

JUNCTION BOX RELOCATION

- A. Remove the junction box from the battery box. Reroute the wiring harness from around the outside of the aluminum cross channels. **NOTE:** Save the original mount bolts for later use.
- B. Fasten the relocation bracket to the battery box using the 1/4" mounting hardware (No. 7, 15, 20, and 24 on the parts list).
- C. Fasten the junction box to the relocation bracket using the original mount bolts (Fig. 4).

AIR DRYER RELOCATION

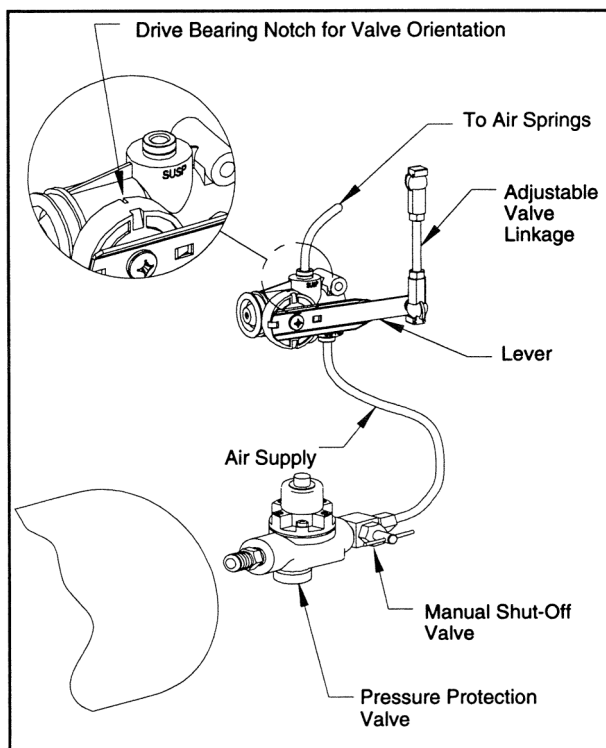
- A. Remove the air dryer and the original mount bracket. **NOTE:** Save the original mount bolts for future use.
- B. Mount the Air Dryer Mount Bracket (No. 31 on the parts list) to the frame using original mount bolts.
- C. Remount the air dryer to the Air Dryer Mount Bracket using original mount bolts. **NOTE:** This bracket will cause some air dryers to drop more than others; make sure there is adequate space.



PLUMBING INSTRUCTIONS



FOR SAFTY PURPOSES THE CABMATE MUST BE SUPPLIED FROM A PRESSURE PROTECTED CIRCUIT. IN THE EVENT OF AN AIR LEAK IN THE CAB SUSPENSION, FAILURE TO PROVIDE A PRESSURE PROTECTED CIRCUIT MAY CAUSE LOSS OF AIR PRESSURE TO VITAL SYSTEMS ON THE VEHICLE.



LOSS OR APPLICATION OF AIR PRESSURE TO CABMATE WILL CAUSE SUDDEN MOVEMENT OF THE CAB. PRIOR TO INSTALLING OR PERFORMING MAINTENANCE, BLOCK UP THE CABMATE TO PREVENT THE POSSIBILITY OF INJURY.



CONNECT THE CABMATE DIRECTLY TO THE MAIN AIR TANK. YOU WILL NEED AN AIR PRESSURE PROTECTION VALVE IN THE LINE. (INCLUDED IN THE PRESSURE PROTECTION KIT. LINK MFG. PART NO. 13500000). DO NOT USE AN AIR PRESSURE REGULATOR!

A. With the tank at 0 p.s.i., remove the existing plug or fitting from the desired port.

B. Apply joint compound to the fittings and install the pressure protection kit. **DO NOT USE TEFLON TAPE.** Be sure that the arrows on the valve are pointing in the direction of air flow and the vent hole is pointed down. **NOTE:** Additional fittings/reducers may be required to attach the hex nipple to the main air tank.

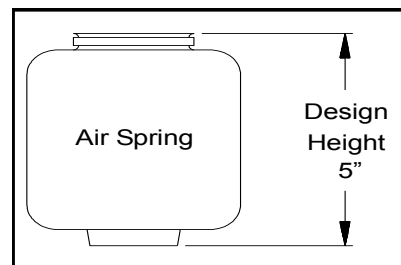
C. Run the 1/4" airline from the shut-off valve to the CABMATE. Be sure that the airline has enough clearance so that there are no pinch points that may restrict or cut the airline. Secure the airline using the cable ties supplied by Link Mfg.

D. Tighten all plumbing fittings. Then, with the system at operating pressure (90 to 110 p.s.i.), open the Manual Shut-off Valve to supply air to the CABMATE. Check the system for air leaks.

E. Check for proper operation of the height control valve. Disconnect the valve linkage from the lever. Push the lever down 45°, air should flow into the air spring(s). Return the lever to the neutral position. Push the lever up 45°, air should exhaust from the air spring(s). Return the lever to the neutral position; no air should flow. Reconnect the valve linkage to the lever.

HEIGHT ADJUSTMENTS

Measure the design height of the air spring(s). The height should be 5 inches \pm 1/16. To change the height, disconnect one end of the valve linkage and adjust accordingly.



140520A

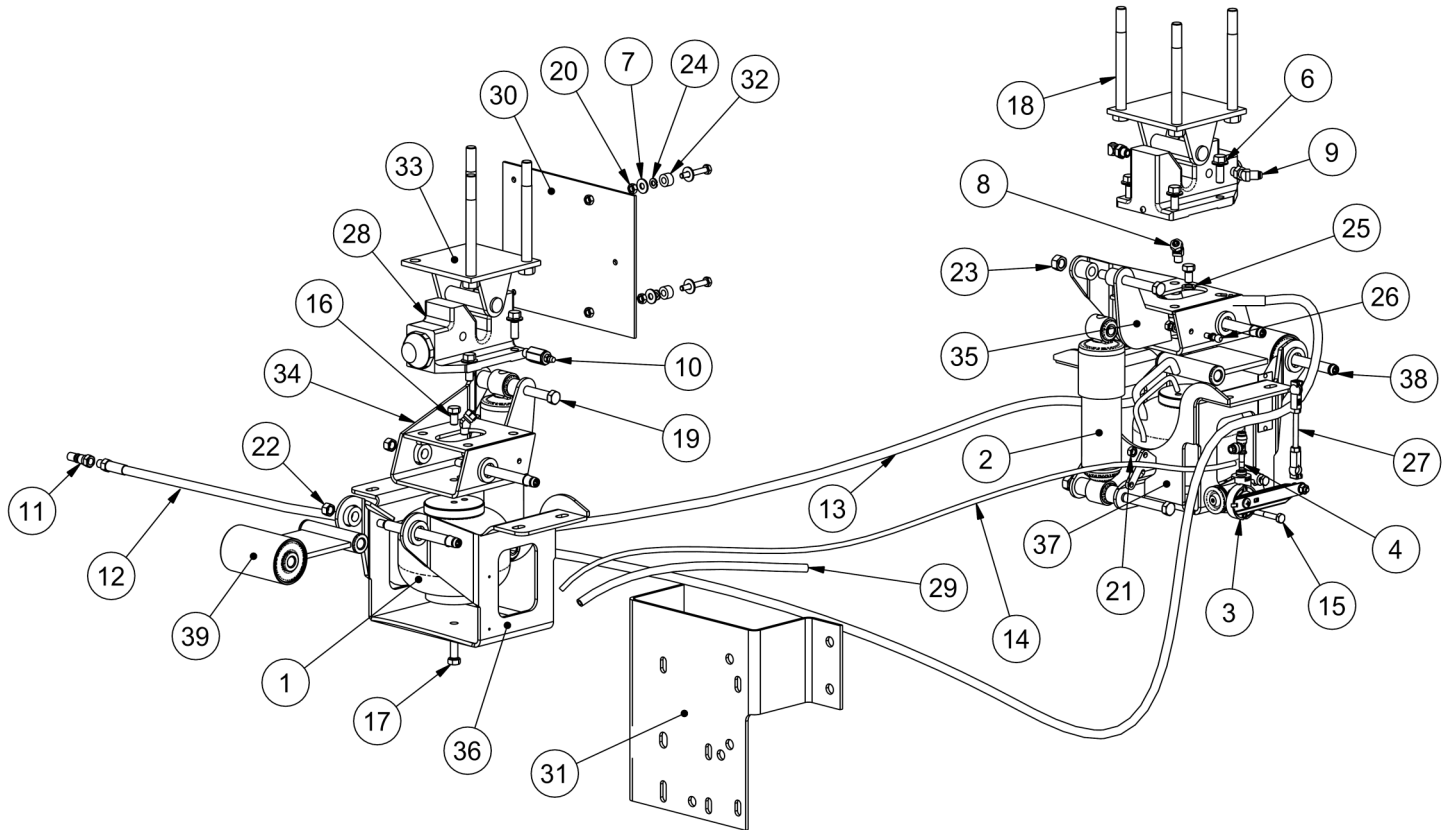
MAINTENANCE

CABMATES need no lubrication and little maintenance. The following components should be checked at the time the truck is being serviced. However, immediate corrective action should be taken if a serious malfunction occurs.

COMPONENT	POSSIBLE PROBLEM	CORRECTIVE ACTION	TORQUE
Airlines	Air leaks	Replace airline	Compression Nut Hand Tight + 1 Turn
Fittings	Air leaks	Remove fitting and apply fresh joint compound. Reinstall fitting, but Do Not Overtighten. Do not use teflon tape.	AIR SPRING MATERIAL Metal Plastic 15 Hand Tight Ft. Lbs. + 1 Turn
Air Springs	A. Improper height B. Air leakage	A. Adjust valve linkage to maintain proper air spring height. B. Replace air spring.	Size Metal Plastic 3/8 25 Ft. Lbs 4 Ft. Lbs 1/2 28 Ft. Lbs 10 Ft. Lbs 3/4 30 Ft. Lbs 10 Ft. Lbs
Height Control Valve*	A. Air leakage from joint between valve halves. B. Air springs will not inflate when weight is added to the cab. C. Air springs will not deflate when weight is removed from the cab.	A. Tighten 4 Phillips head screws. B. Replace valve. C. Replace valve.	30 In. Lbs. 1/4 Mount Fasteners 10 Ft. Lbs.
Shock Absorber	Insufficient dampening effect.	Replace shocks.	45 Ft. Lbs.
Hinge Arm	A. Loose nuts on hinge arm. B. Worn bushings.	A. Tighten securely. B. Replace hinge arm.	25 Ft. Lbs.

IMPORTANT: Periodically check the tightness of all fasteners.

CABMATE MODEL NAV9876 PARTS LIST



ITEM	PART NUMBER	DESCRIPTION	QTY
1	11020075	SPRING-AIR	2
2	12010054	SHOCK ABSORBER	2
3	13500101	SERVICE KIT-HEIGHT CONTROL VALVE	1
4	13025497	RUN TEE-PLUG IN, 1/4"	1
5	13500000	KIT-PROTECTION, PRESSURE	1
6	14111208	3/8 X 1 UNC FLANGE BOLT (GRADE 8)	8
7	14870800	1/4 TYPE A PLAIN WASHER	4
8	13024018	ELBOW 45, 1/4 TB 1/8 M-NPT, DOT	2
9	13029994	45° ELBOW, 1/4 TB, HYD.	3
10	13029996	VALVE-BLEEDER	1
11	13029997	COUPLING-NIPPLE, HYD.	1
12	13029998	HOSE-HIGH PRESSURE	1
13	13029999	HOSE-HIGH PRESSURE	1
14	13020090	.250 AIRLINE	5.6 FT
15	14010814	1/4 X 1 3/4 UNC HEX CAP SCR (GR 5)	4
16	14011205	3/8 X 5/8 UNC HEX CAP SCR (GR 5)	2
17	14011208	3/8 X 1 UNC HEX CAP SCR (GR 5)	2
18	14011644	1/2 X 5 1/2 UNC HEX CAP SCR (GR 5)	6
19	14031432	7/16 X 4 UNF HEX CAP SCR (GR 5)	4
20	14700800	1/4 UNC HEX NUT (GR B)	4

ITEM	PART NUMBER	DESCRIPTION	QTY
21	14760800	1/4 UNC HEX CTR LOCK NUT (GR B)	2
22	14761201	3/8 UNC HEX TOP LOCK NUT (GR C)	4
23	14771400	7/16 UNF HEX CTR LOCK NUT (GR B)	4
24	14850800	1/4 LOCK WASHER	2
25	14851200	3/8 LOCK WASHER	4
26	29910026	KIT-PIVOT BALL	2
27	15000248	LINKAGE-VALVE, HEIGHT CONTROL (4.25)	1
28	15000690	LATCH	2
29	15091096	.250 LOOM-CORRUGATED	1.8 FT
30	24920025	BRACKET,MAGNETIC SWITCH	1
31	24920026	BRACKET-MOUNT, AIR DRYER	1
32	24920027	SPACER, BRACKET	2
33	24925001	BRACKET-MOUNT, CAB	2
34	24925013	BRACKET-MOUNT, LATCH	1
35	24925014	BRACKET-MOUNT, LATCH	1
36	24925023	BRACKET-MOUNT, CROSSMEMBER	1
37	24925024	BRACKET-MOUNT, CROSSMEMBER	1
38	29900502	BOLT-HINGE ARM (4.75)	4
39	29922005	HINGE ARM, TYPE A (5.000)	2
-	34921000	KIT-DOCUMENT, NAV9876 (AFTM)	1