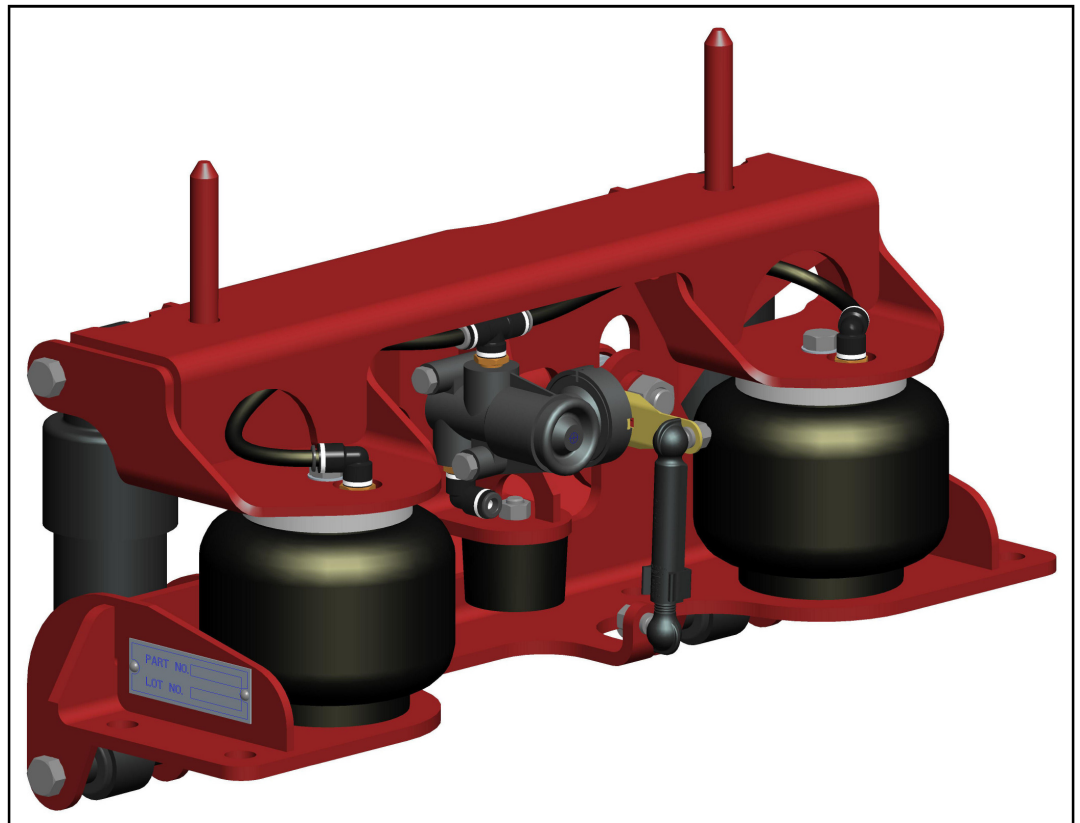


Link

Link[®] Cabmate[®] Cab Air Suspension

PRODUCT INFORMATION PARTS LIST

Link Mfg. Part #2483-A000

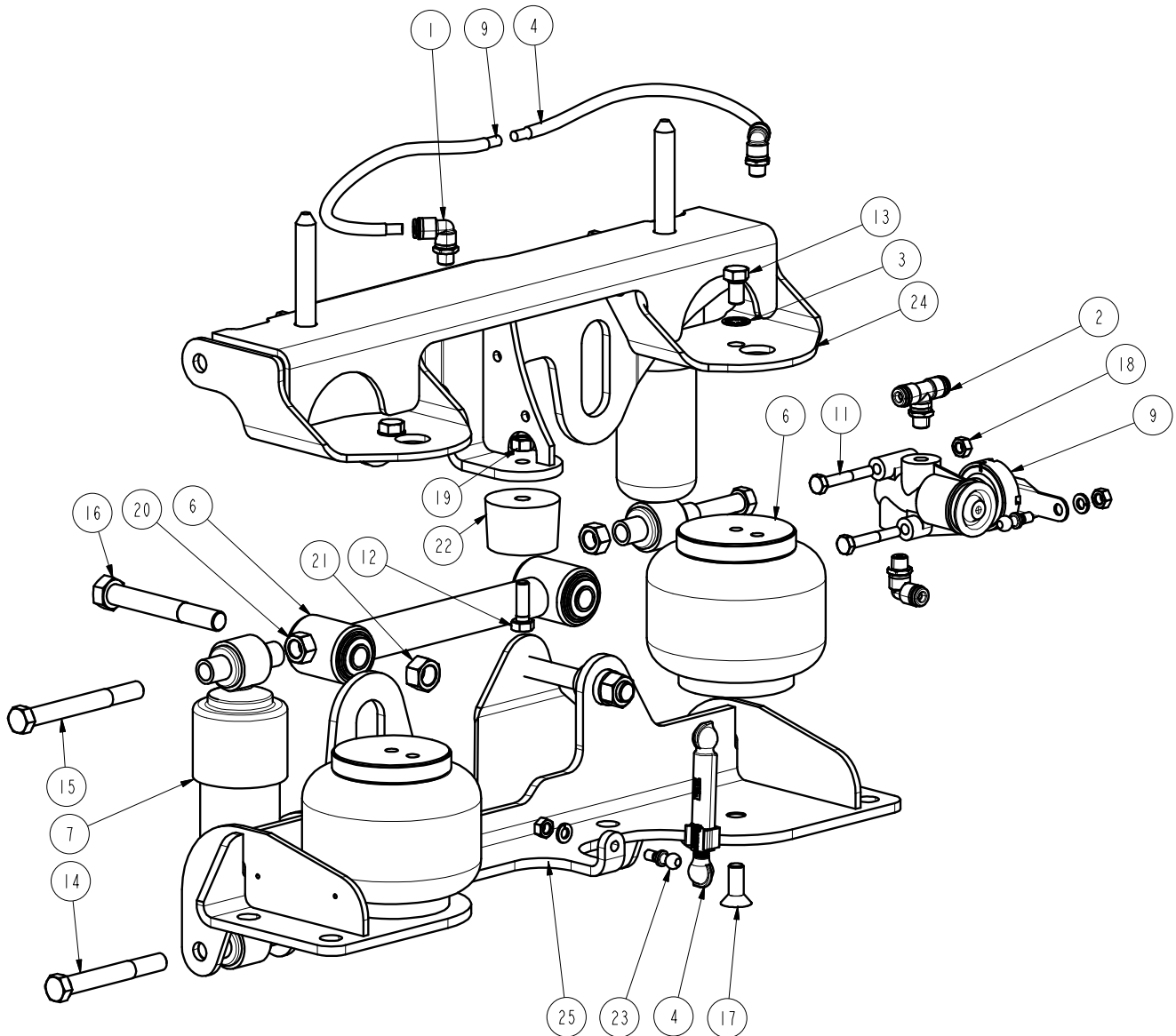


Link Mfg. Ltd.
223 15th St. N.E.
Sioux Center, IA USA
51250-2120

(712) 722-4874
Fax (712) 722-4876

**QUESTIONS?
CALL CUSTOMER
SERVICE
1-800-222-6283**

Factory installed on Navistar 8100 series Conventionals.



CABMATE® 2483-A000 PARTS LIST

ITEM	PART NUMBER	DESCRIPTION	QTY	ITEM	PART NUMBER	DESCRIPTION	QTY
1	13025203	ELBOW, 1/4 TB 1/8 M-NPT	3	14	1403-1428	7/16 X 3 1/2 UNF HEX CAP SCR (GR 5)	2
2	13025206	BRANCH TEE, 1/4 TB 1/8 M-NPT	1	15	1403-1432	7/16 X 4 UNF HEX CAP SCR (GR 5)	2
3	14851205	3/8 INT TOOTH LOCK WASHER, ZINC	2	16	1404-1630	1/2 X 3 3/4 UNF HEX CAP SCR (GR 8)	2
4	15000213	LINKAGE-VALVE	1	17	1417-1208	3/8 X 1 UNC SOC FLAT CSK HD CAP SCREW	2
5	15000435	.25 CORRUGATED LOOM	1.3 FT	18	1476-0800	1/4 UNC HEX CTR LOCK NUT (GR B)	2
6	29932008	LATERAL CONTROL ROD	1	19	1476-1000	5/16 UNC HEX CTR LOCK NUT (GR B)	1
7	1102-0022	SPRING-AIR	2	20	1477-1405	7/16 UNF HEX TOP LOCK NUT (GR B)	4
8	1201-1043	SHOCK ABSORBER	2	21	1477-1601	1/2 UNF HEX TOP LOCK NUT (GR C)	2
9	1350-0121	ASSEMBLY-HEIGHT CONTROL VALVE	1	22	1500-0071	BUMPER-JOUNCE, 1.25	1
10	1302-0090	.25 AIRLINE	1.5 FT	23	2991-0026	KIT-PIVOT BALL	2
11	1401-0814	1/4 X 1 3/4 UNC HEX CAP SCR (GR 5)	2	24	2483-1000	BRACKET-MOUNT, CAB	1
12	1401-1008	5/16 X 1 UNC HEX CAP SCR (GR 5)	1	25	2483-1001	BRACKET-MOUNT, CROSSMEMBER	1
13	1401-1205	3/8 X 5/8 UNC HEX CAP SCR (GR 5)	2				

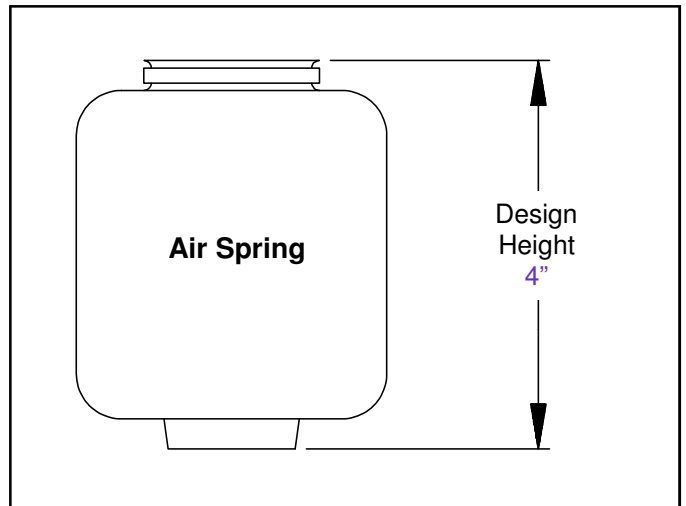
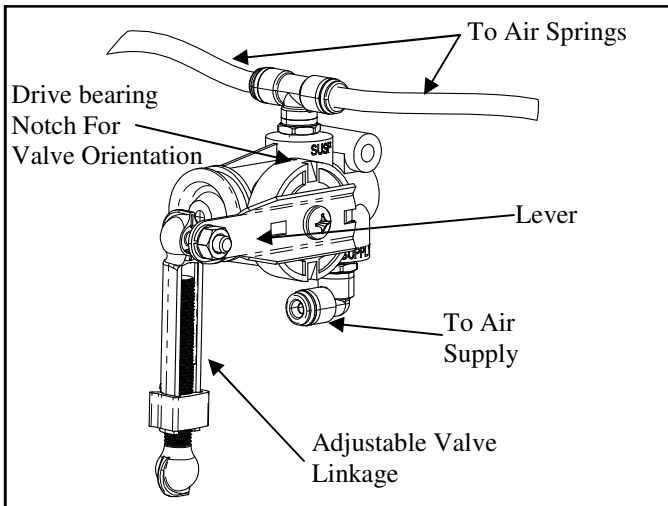
CABMATE® MODEL 2483-A000

WARNING: FOR SAFETY PURPOSES THE CABMATE MUST BE SUPPLIED FROM A PRESSURE PROTECTED CIRCUIT. IN THE EVENT OF AN AIR LEAK IN THE CAB SUSPENSION, FAILURE TO PROVIDE A PRESSURE PROTECTED CIRCUIT MAY CAUSE LOSS OF AIR PRESSURE TO VITAL SYSTEMS ON THE VEHICLE.

WARNING: LOSS OR APPLICATION OF AIR PRESSURE TO THE CABMATE WILL CAUSE SUDDEN MOVEMENT OF THE CAB. PRIOR TO INSTALLING OR PERFORMING ANY MAINTENANCE, BLOCK UP THE CABMATE TO PREVENT THE POSSIBILITY OF INJURY.

HEIGHT ADJUSTMENTS

Measure the design height of the air spring(s). The height should be 4 inches \pm 1/16. To change the height, disconnect one end of the valve linkage and adjust accordingly. Tighten the lock nuts on the valve linkage.



MAINTENANCE

CABMATES need no lubrication and little maintenance. The following components should be checked at the time the truck is being serviced. However, immediate corrective action should be taken if a serious malfunction

COMPONENT	POSSIBLE PROBLEM	CORRECTIVE ACTION	TORQUE
Airlines	Air leaks	Replace airline	Compression Nut Hand Tight + 1 Turn
Fittings	Air leaks	Remove fitting and apply fresh joint compound. Reinstall fitting, but Do Not Overtighten. Do not use teflon tape.	Threaded into: Metal Plastic 15 Hand Tight Ft. Lbs. + 1 Turn
Air Springs	A. Improper height B. Air leakage	A. Adjust valve linkage to maintain proper air spring height. B. Replace air spring.	Size Metal Plastic 3/8 25 Ft. Lbs 4 Ft. Lbs 1/2 28 Ft. Lbs 10 Ft. Lbs 3/4 30 Ft. Lbs 10 Ft. Lbs
Height Control Valve	Air spring(s) will not inflate when weight is added to the cab. OR Air springs will not deflate when weight is removed from the cab.	A. Inspect valve to insure drive bearing notch is located on "SUPPLY" port side of valve. If not, loosen lever screw (but do not remove completely) and pull lever loose from drive bearing, rotate drive bearing until the drive bearing notch is in the correct position and resecure lever by tightening lever screw. B. Replace valve.	1/4 Mount Fasteners 10 Ft. Lbs. Bearing Screw 40-50 In. Lbs.
Shock Absorber	Insufficient dampening effect	Replace shocks	45 Ft. Lbs.
Lateral Control Rod	A. Loose nuts on lateral control rod bolts B. Worn bushings	A. Tighten securely to clamp the inner sleeve. B. Replace lateral control rod.	40 Ft. Lbs.

IMPORTANT: Periodically check the tightness of all fasteners.

*Note: If you attempt to disassemble or adjust fittings on the height control valve, it will void your warranty. Contact Link Manufacturing for assistance.