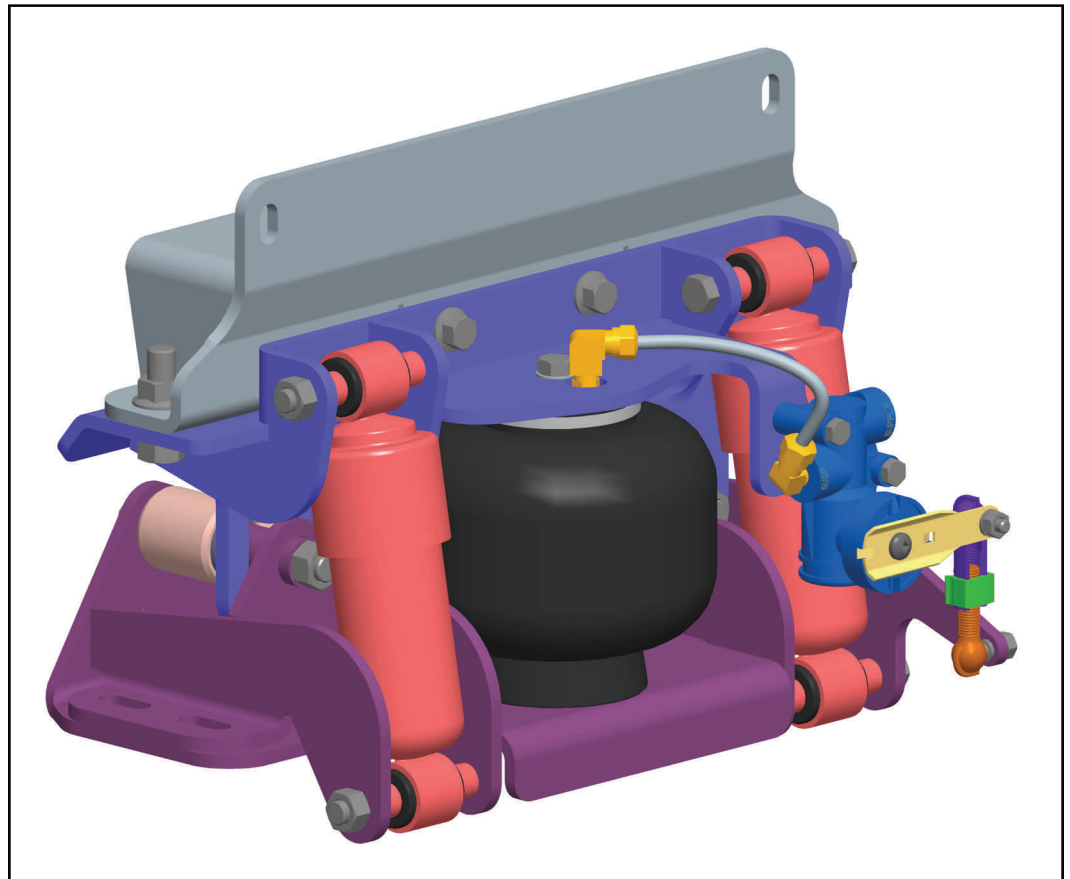


INSTALLATION INSTRUCTIONS

LINK[®] Cabmate[®] Cab Air Suspension

IDC90 (2454D000)



The **CABMATE MODEL IDC90** fits most International:

- 9100, 9200 and 9900* Series daycabs **manufactured after March 1997.**
- 9200 Series daycabs with Detroit Diesel 60 series engines **manufactured prior to March 1997.**
- 9400* Series daycabs **manufactured after December 2001.**

*9400 and 9900SS series daycabs **manufactured before December 2001** require Link Mfg. Part No. 2476-B000

UNIT WEIGHT: 38.1 LB.

NET WEIGHT ADDED: 26.3LB.

Link Mfg. Ltd.
223 15th St. N.E.
Sioux Center, IA USA
51250-2120

(712) 722-4874

www.linkmfg.com

**QUESTIONS?
CALL CUSTOMER
SERVICE
1-800-222-6283**

CABMATE[®] MODEL IDC90

Review the Parts List on page 3 to become familiar with the different components of the CABMATE.

IMPORTANT: Due to many chassis variables caused by installation of special equipment or options, the fit of the IDC90 CABMATE may be affected and should be evaluated before beginning installation.

IMPORTANT: Installation of the CABMATE system will allow the cab to move freely. Before starting installation, check clearances between the cab and any objects the cab may contact when it moves (1 1/2 inches of clearance should be sufficient). The clearance of components that are affected by cab movement, such as exhaust and radiator systems, must also be evaluated.

The IDC90 CABMATE has two possible configurations depending on the cab to crossmember dimension. **Determine which configuration of the IDC90 will be required before starting the installation process.**

- **SUSPENSION ONLY:** Installed on trucks with a cab to crossmember dimension of approximately 5.92 inches (Fig.2), original cab support part nos. 432364C2 and 2024886C1.

- **SUSPENSION AND SPACER:** Installed on trucks with a cab to crossmember dimension of approximately 8.69 inches (Fig 3), original cab support part nos. 432364C1 and 598073C1.

A. If the suspension and spacer configuration is required, attach the spacer to the cab mount bracket using the supplied mounting hardware (Item nos. 13, 14 and 20 on the parts list.)

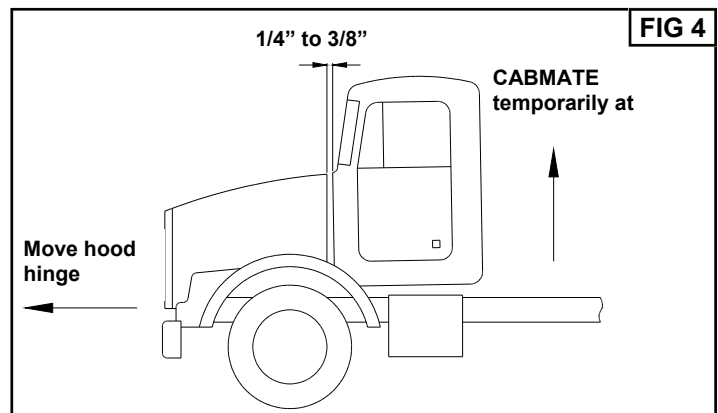
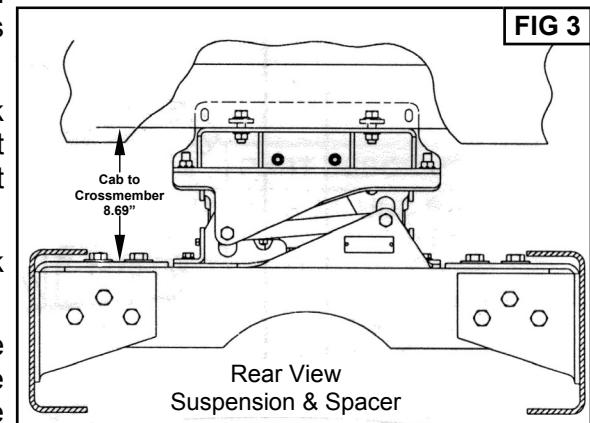
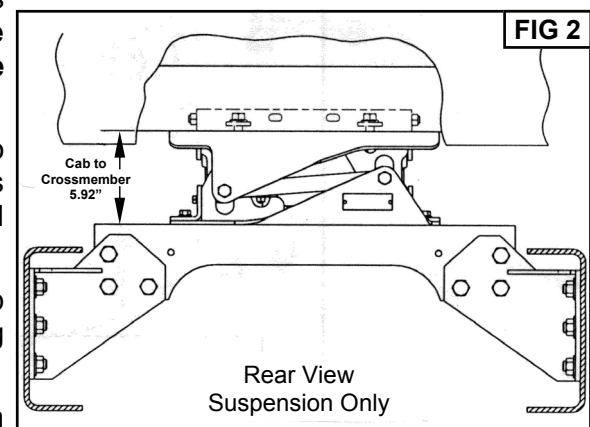
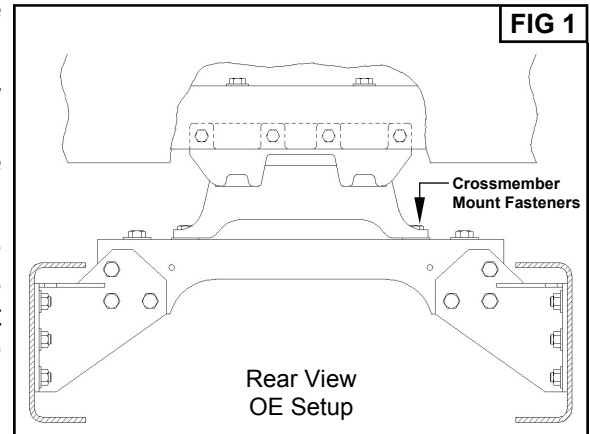
B. Remove the eight mount bolts from the top of the stock mount. Securely prop up the cab and remove all stock mount parts. **NOTE: SAVE ALL** original crossmember mount fasteners for later use. (Fig. 1)

C. Loosely fasten the crossmember mount bracket to the truck crossmember using the four original crossmember fasteners.

D. Slowly lower the cab until it touches the top of the CABMATE. Fasten the cab to the CABMATE using the supplied mounting hardware (Item nos. 14 and 25 on the parts list). **SECURELY TIGHTEN ALL FASTENERS.** Lower the cab completely.

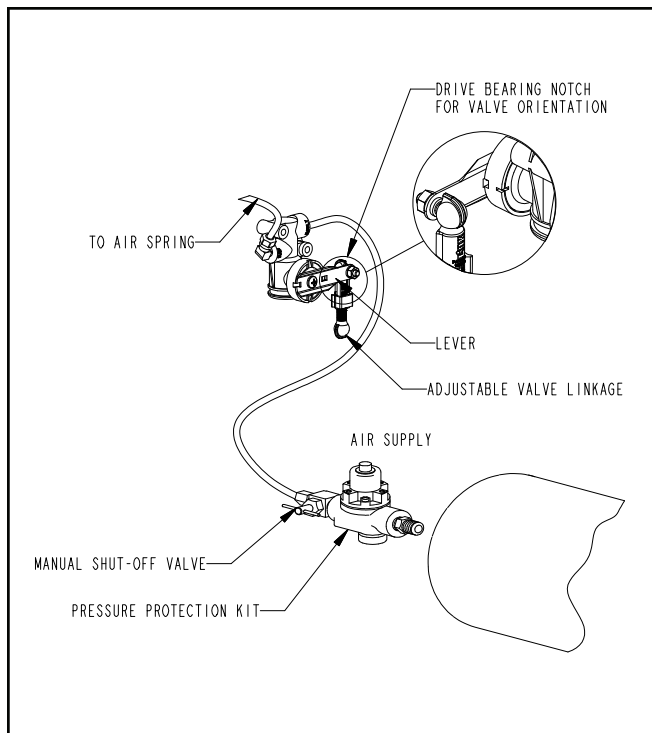
E. See page 2 for plumbing instructions and height adjustments.

F. **IMPORTANT:** After plumbing and height control adjustments are completed, temporarily adjust the CABMATE to its maximum upward position. There must be a minimum of 1/4" gap between the cab and the hood. Adjust the hood hinge forward as necessary (Fig. 3).



PLUMBING INSTRUCTIONS

WARNING: FOR SAFTY PURPOSES THE CABMATE MUST BE SUPPLIED FROM A PRESSURE PROTECTED CIRCUIT. IN THE EVENT OF AN AIR LEAK IN THE CAB SUSPENSION, FAILURE TO PROVIDE A PRESSURE PROTECTED CIRCUIT MAY CAUSE LOSS OF AIR PRESSURE TO VITAL SYSTEMS ON THE VEHICLE.



WARNING: LOSS OR APPLICATION OF AIR PRESSURE TO CABMATE WILL CAUSE SUDDEN MOVEMENT OF THE CAB. PRIOR TO INSTALLING OR PERFORMING MAINTENANCE, BLOCK UP THE CABMATE TO PREVENT THE POSSIBILITY OF INJURY.

WARNING: CONNECT THE CABMATE DIRECTLY TO THE MAIN AIR TANK. YOU WILL NEED AN AIR PRESSURE PROTECTION VALVE IN THE LINE. (INCLUDED IN THE PRESSUREPROTECTION KIT. LINK MFG. PART NO. 1350-0000). DO NOT USE AN AIR PRESSURE REGULATOR!

A. With the tank at 0 p.s.i., remove the existing plug or fitting from the desired port.

B. Apply joint compound to the fittings and install the pressure protection kit. DO NOT USE TEFLON TAPE. Be sure that the arrows on the valve are pointing in the direction of air flow and the vent hole is pointed down. NOTE: Additional fittings/reducers may be required to attach the hex nipple to the main air tank.

C. Run the 1/4" airline from the shut-off valve to the CABMATE. Be sure that the airline has enough clearance so that there are no pinch points that may restrict or cut the airline. Secure the airline using the cable ties supplied by Link Mfg.

D. Tighten all plumbing fittings. Then, with the system at operating pressure (90 to 110 p.s.i.), open the Manual Shut-off Valve to supply air to the CABMATE. Check the system for air leaks.

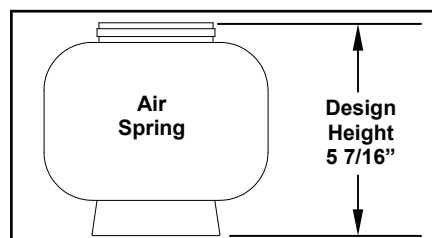
E. Check for proper operation of the height control valve. Disconnect the valve linkage from the lever. Push the lever down 45°, air should flow into the air spring(s). Return the lever to the neutral position. Push the lever up 45°, air should exhaust from the air spring(s). Return the lever to the neutral position; no air should flow. Reconnect the valve linkage to the lever.

HEIGHT ADJUSTMENTS

Measure the design height of the air spring(s). The height should be 5 inches ± 1/16. To change the height, disconnect one end of the valve linkage and adjust accordingly.

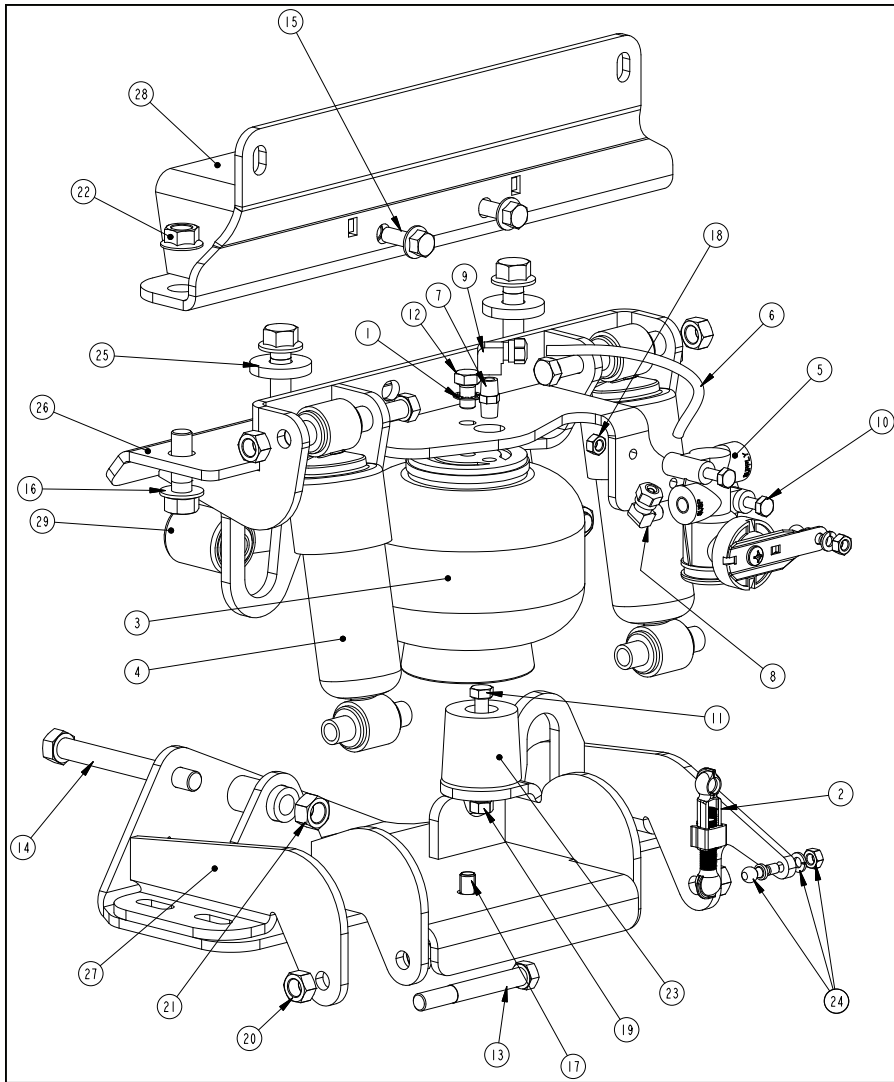
MAINTENANCE

CABMATES need no lubrication and little maintenance. The following components should be checked at the time the truck is being serviced. However, immediate corrective action should be taken if a serious malfunction occurs.



COMPONENT	POSSIBLE PROBLEM	CORRECTIVE ACTION	TORQUE
Airlines	Air leaks	Replace airline	Compression Nut Hand Tight + 1 Turn
Fittings	Air leaks	Remove fitting and apply fresh joint compound. Reinstall fitting, but Do Not Overtighten. Do not use teflon tape.	Threaded into: Metal 15 Hand Tight Plastic + 1 Turn Ft. Lbs.
Air Springs	A. Improper height B. Air leakage	A. Adjust valve linkage to maintain proper air spring height. B. Replace air spring.	Size Metal Plastic 3/8 25 Ft. Lbs 04 Ft. Lbs 1/2 28 Ft. Lbs 10 Ft. Lbs 3/4 30 Ft. Lbs 10 Ft. Lbs
Height Control Valve	Air spring(s) will not inflate when wheight is added to the cab; OR Air spring(s) will not deflate when wheight is removed from the cab.	A. Inspect valve to insure drive bearing notch is located on "SUSP" port side of valve. If not, loosen lever screw (but do not remove completely) and pull lever loose from drive bearing, rotate drive bearing until the bearing notch is in the correct position and resecure lever by tightening lever screw. B. Replace Valve	1/4 Mount Fasteners 10 Ft. Lbs. Bearing Screw 40-50 InLbs.
Shock Absorber	Insufficient dampening effect	Replace shocks	45 Ft. Lbs.
Lateral Control Rod	A. Loose nuts on lateral control rod bolts B. Worn bushings.	A. Tighten securely to clamp the inner sleeve. B. Replace lateral control rod.	40 Ft. Lbs.

IMPORTANT: Periodically check the tightness of all fasteners.



CABMATE® MODEL IDC90 PARTS LIST

ITEM	PART NO.	DESCRIPTION	QTY	ITEM	PART NO.	DESCRIPTION	QTY
1	14851205	3/8 INT TOOTH LOCK WASHER, ZINC	1	16	1411-1612	1/2 X 1 1/2 UNC FLANGE BOLT (GRADE 8)	4
2	15000211	LINKAGE-VALVE, HEIGHT CONTROL	1	17	1417-1207	3/8 X 7/8 UNC SOC FLAT CSK HD CAP SCR	1
3	1101-0044	SPRING-AIR	1	18	1476-0800	1/4 UNC HEX CTR LOCK NUT (GR B)	2
4	1201-1049	SHOCK ABSORBER	2	19	1476-1000	5/16 UNC HEX CTR LOCK NUT (GR B)	1
5	1350-0114	ASSEMBLY-HEIGHT CONTROL VALVE	1	20	1477-1405	7/16 UNF HEX TOP LOCK NUT (GR B)	4
6	1302-0090	AIRLINE-NYLON, .250 O.D., BULK	1	21	1477-1601	1/2 UNF HEX TOP LOCK NUT (GR C)	2
7	1302-2064	HEX NIPPLE, 1/8 M-NPT	1	22	1480-1601	1/2 UNC TOP LOCK FL NUT (GR F)	2
8	1302-4035	ELBOW, 1/4 TB 1/8 M-NPT, DOT	1	23	1500-0070	BUMPER-JOUNCE, 1.75	1
9	1302-4049	ELBOW, 1/4 TB 1/8 F-NPT, DOT	1	24	2991-0026	KIT-PIVOT BALL	1
10	1401-0814	1/4 X 1 3/4 UNC HEX CAP SCR (GR 5)	2	25	2454-0019	WASHER-MOUNT	2
11	1401-1012	5/16 X 1 1/2 UNC HEX CAP SCR (GR 5)	1	26	2454-1003	BRACKET-MOUNT, CAB	1
12	1401-1205	3/8 X 3/4 UNC HEX CAP SCR (GR 5)	1	27	2454-1004	BRACKET-MOUNT, CROSSMEMBER	1
13	1403-1428	7/16 X 3 1/2 UNF HEX CAP SCR (GR 5)	4	28	2454-1005	SPACER-CAB	1
14	1404-1636	1/2 X 4 1/2 UNF HEX CAP SCR (GR 8)	2	29	2993-2012	LATERAL CONTROL ROD	1
15	1411-1208	3/8 X 1 UNC FLANGE BOLT (GRADE 8)	2	-	1350-0000	KIT-PROTECTION, PRESSURE	1