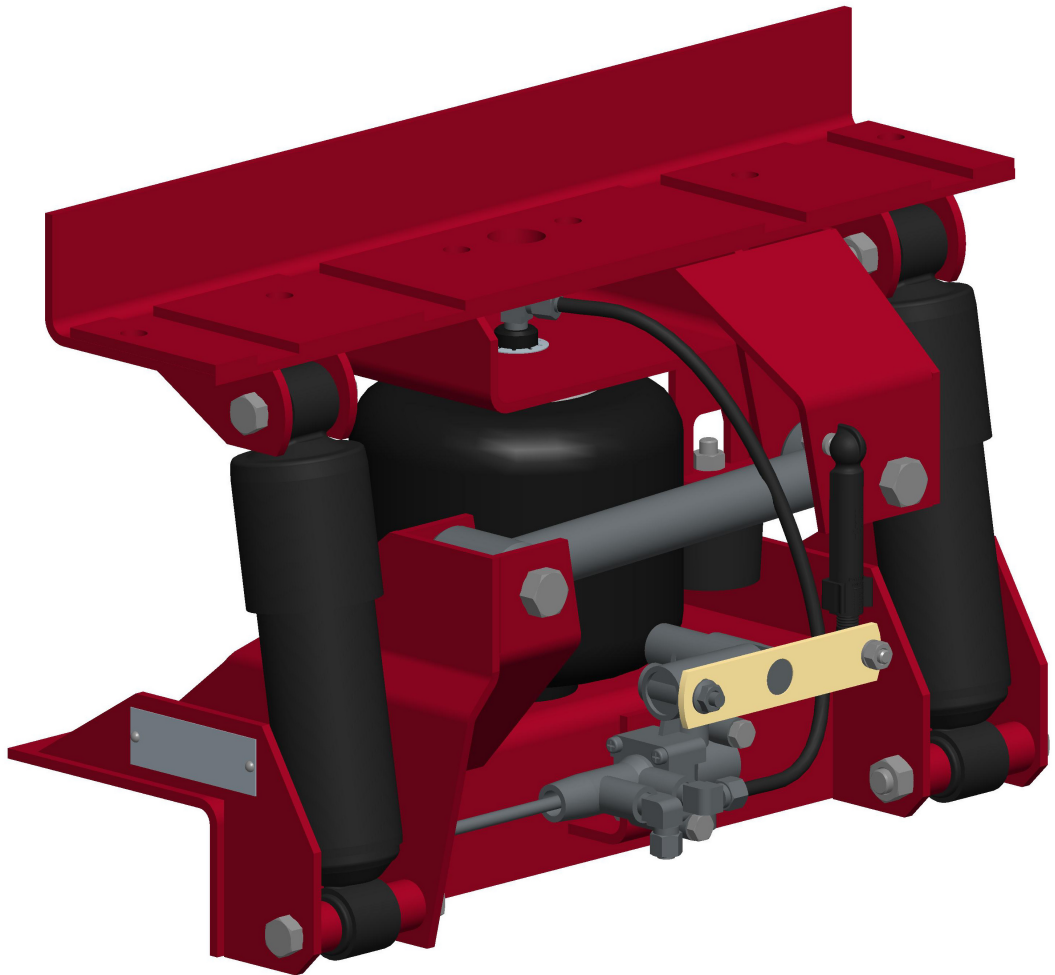


# INSTALLATION INSTRUCTIONS



**GMC104TK(23850000)**



*Link mfg. Ltd.  
223 15th St. N.E.  
Sioux Center, IA USA  
51250-2120*

*(712) 722-4874  
Fax (712) 722-4876*

**QUESTIONS?  
CALL CUSTOMER  
SERVICE  
1-800-222-6283**

The **CABMATE MODEL GMC104TK** fits most 1990 through 2003 GMC TopKick, Chevrolet Kodiak, and C6500 conventional truck cabs. Standard air system is required. It replaces the original rear cab mounts, GMC Part No.s 15651171, 15632433, or 15959499.

UNIT WEIGHT: 32.2 LB.

NET WEIGHT ADDED: 4.2 LB.

33850001  
JAN 12, 2011

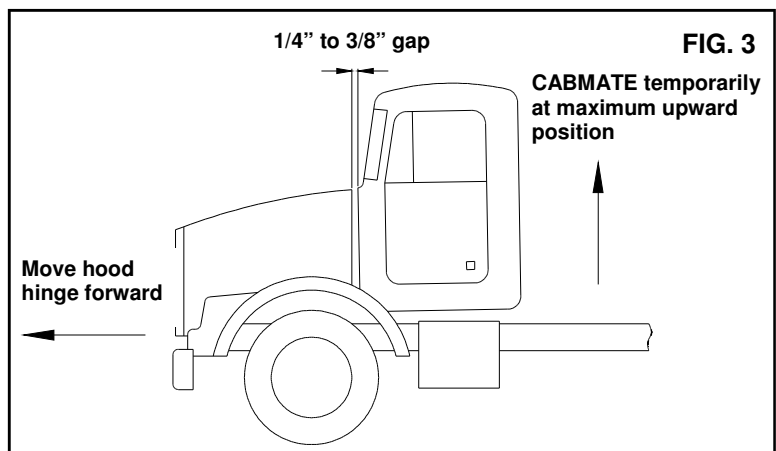
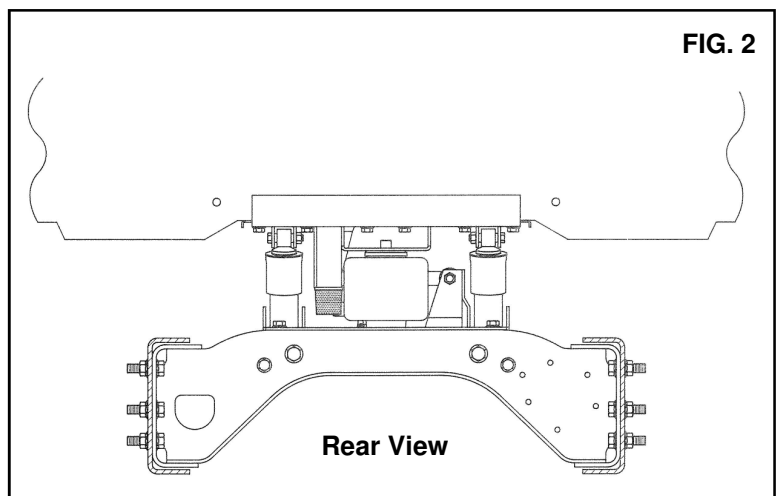
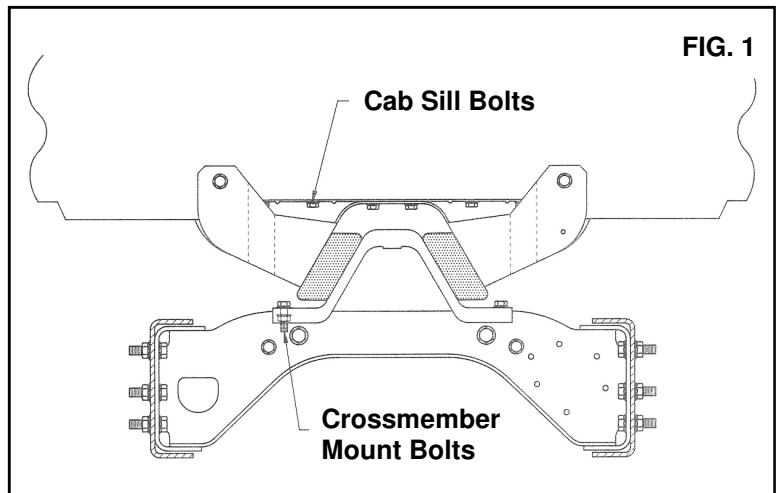
# CABMATE MODEL GMC104TK

Review the Parts List on page 3 to become familiar with the different components of the CABMATE.

**IMPORTANT:** Due to many chassis variables caused by installation of special equipment or options, the fit of the CABMATE GMC104TK may be affected and should be evaluated before beginning installation.

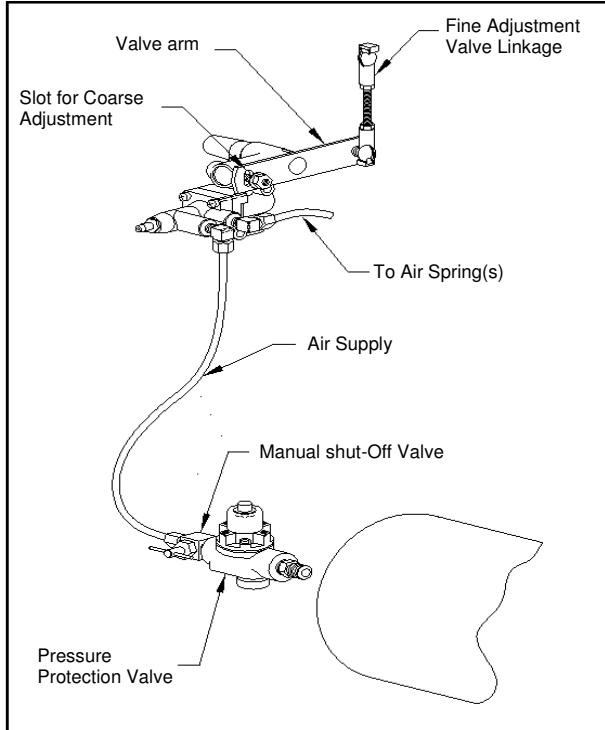
**IMPORTANT:** Installation of the CABMATE system will allow the cab to move freely. Before starting installation, check clearances between the cab and any objects the cab may contact when it moves (1 1/2 inches of clearance should be sufficient). The clearance of components that are affected by cab movement, such as exhaust and radiator systems, must also be evaluated.

- A. Remove the four bolts from the upper cab mount bracket and the six cab sill bolts as shown in figure 1. Securely prop up the cab and remove the upper and lower cab mount brackets. **NOTE:** save the six cab sill bolts and the four crossmember mount bolts for later use.
- B. With the Shock Absorbers to the front of the truck, slide the CABMATE between the cab and the crossmember. Loosely fasten the Unit Bottom to the crossmember using the four crossmember mount bolts (Fig. 2).
- C. Slowly lower the cab until it touches the top of the CABMATE. Fasten the Unit Top to the cab from using the six cab sill bolts. **SECURELY TIGHTEN ALL FASTENERS.** Lower the cab completely.
- D. See page 2 for plumbing instruction and height adjustments.
- E. **IMPORTANT:** After plumbing and height control adjustments are completed, temporarily adjust the CABMATE to its maximum upward position. There must be a minimum of 1/4" gap between the cab and the hood. Adjust the hood hinge forward as necessary (Fig. 3).



## PLUMBING INSTRUCTIONS

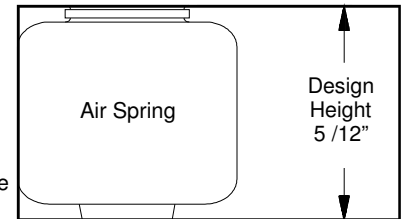
**WARNING: FOR SAFTY PURPOSES THE CABMATE MUST BE SUPPLIED FROM A PRESSURE PROTECTED CIRCUIT. IN THE EVENT OF AN AIR LEAK IN THE CAB SUSPENSION, FAILURE TO PROVIDE A PRESSURE PROTECTED CIRCUIT MAY CAUSE LOSS OF AIR PRESSURE TO VITAL SYSTEMS ON THE VEHICLE.**



air spring(s). Return the valve arm to the neutral position. Push the valve arm up 45° and hold for 5 seconds, air should be evacuating from the air spring(s). Return the valve arm to the neutral position; no air should flow. Reconnect the valve linkage to the valve arm.

### HEIGHT ADJUSTMENTS

Measure the design height of the air spring(s). The height should be 5 1/2 inches ± 1/16. To change the height, disconnect one end of the valve linkage and adjust accordingly. Tighten the lock nuts on the valve linkage. The valve arm has a slot which will allow for coarse adjustment also. (See diagram above.)



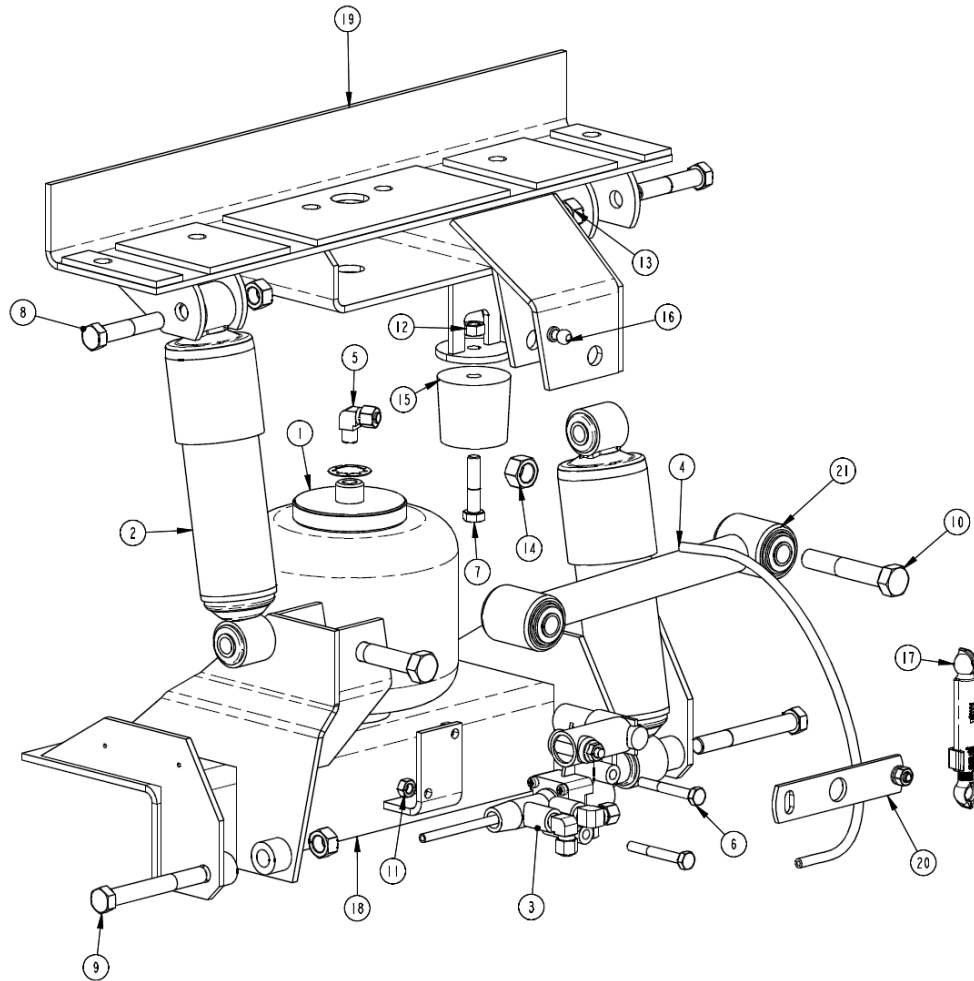
### MAINTENANCE

CABMATES need no lubrication and little maintenance. The following components should be checked at the time the truck is being serviced. However, immediate corrective action should be taken if a serious malfunction occurs.

COMPONENT	POSSIBLE PROBLEM	CORRECTIVE ACTION	TORQUE
<b>Airlines</b>	Air leaks	Replace airline	<b>Compression Nut</b> Hand Tight + 1 Turn
<b>Fittings</b>	Air leaks	Remove fitting and apply fresh joint compound. Reinstall fitting, but <b>Do Not Overtighten. Do not use teflon tape.</b>	<b>Threaded into:</b> <b>Metal</b> 15 Ft. Lbs. <b>Plastic</b> Hand Tight + 1 Turn
<b>Air Springs</b>	<b>A.</b> Improper height <b>B.</b> Air leakage	<b>A.</b> Adjust valve linkage to maintain proper air spring height. <b>B.</b> Replace air spring.	<b>Size</b> <b>Metal</b> <b>Plastic</b> <b>3/8</b> 25 Ft. Lbs. 4 Ft. Lbs. <b>1/2</b> 28 Ft. Lbs. 10 Ft. Lbs. <b>3/4</b> 30 Ft. Lbs. 10 Ft. Lbs.
<b>Height Control Valve</b>	<b>A.</b> Air leakage from joint between valve halves. <b>B.</b> Air spring will not inflate when weight is added to the cab. <b>C.</b> Air springs will not deflate when weight is removed from the	<b>A.</b> Tighten 4 Phillips head screws. <b>B.</b> Replace Valve <b>C.</b> Replace Valve	30 In. Lbs.  <b>1/4 Mount Fasteners</b> 10 Ft. Lbs.
<b>Shock Absorber</b>	Insufficient dampening effect	Replace shocks	45 Ft. Lbs.
<b>Lateral Control Rod</b>	<b>A.</b> Loose nuts on lateral control rod bolts <b>B.</b> Worn bushings.	<b>A.</b> Tighten securely to clamp the inner sleeve. <b>B.</b> Replace lateral control rod.	40 Ft. Lbs.

**IMPORTANT:** Periodically check the tightness of all fasteners.

\*Note: If you attempt to disassemble or adjust fittings on the height control valve, it will void your warranty. Contact Link Manufacturing for assistance.



## CABMATE® MODEL GMC104TK PARTS LIST

ITEM	PART NO.	DESCRIPTION	QTY		ITEM	PART NO.	DESCRIPTION	QTY
1	1101A043	AIR SPRING WITH ATTACHMENTS	1		12	1476-1000	5/16 UNC HEX CTR LOCK NUT (GR B)	1
2	1201-0054	SHOCK ABSORBER	2		13	1477-1400	7/16 UNF HEX CTR LOCK NUT (GR B)	4
3	1301-0020	VALVE-CONTROL, HEIGHT	1		14	1477-1601	1/2 UNF HEX TOP LOCK NUT (GR C)	2
4	1302-0090	AIRLINE-NYLON, .250 O.D., BULK	.8 FT		15	1500-0070	BUMPER-JOUNCE, 1.75	1
5	1302-1105	ELBOW, 1/4 TB 1/8 M-NPT	1		16	29910026	KIT-PIVOT BALL	1
6	1401-0816	1/4 X 2 UNC HEX CAP SCR (GR 5)	2		17	29910051	KIT-LINKAGE, MEDIUM	1
7	1401-1012	5/16 X 1 1/2 UNC HEX CAP SCR (GR 5)	1		18	2385-2100	UNIT BOTTOM	1
8	1403-1418	7/16 X 2 1/4 UNF HEX CAP SCR (GR 5)	2		19	23851100	UNIT TOP	1
9	1403-1428	7/16 X 3 1/2 UNF HEX CAP SCR (GR 5)	2		20	2990-0700	ASSEMBLY-ARM, VALVE	1
10	1404-1624	1/2 X 3 UNF HEX CAP SCR (GR 8)	2		21	29932005	LATERAL CONTROL ROD	1
11	1476-0800	1/4 UNC HEX CTR LOCK NUT (GR B)	2		NOT SHOWN	1350-0000	Kit-Protection, Pressure	1