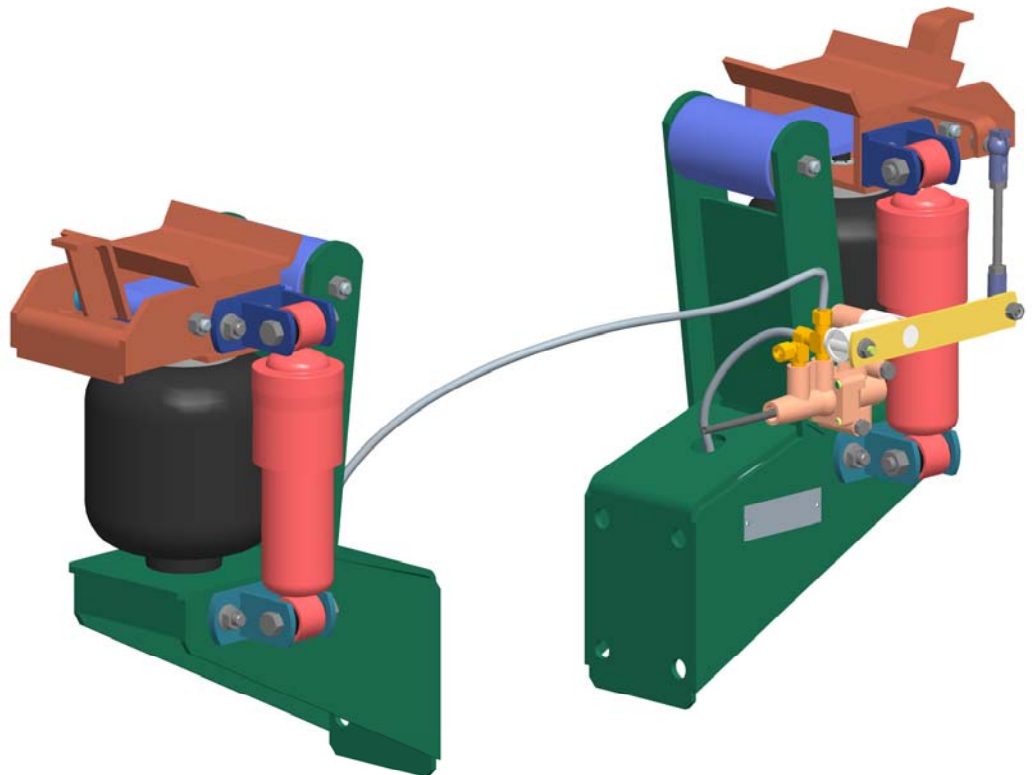


INSTALLATION INSTRUCTIONS



FRT50-2P-C (2255-A000)



The **CABMATE MODEL FRT50-2P-C** fits most Freightliner Cabover Tractors with the rear cab mounts having a center to center measurement of 50" or 54". **Cab mount spacing of 54" requires two additional Adapter Spacers, (Part No. 22205000) specify when ordering.**

UNIT WEIGHT: 52.7 LB.

NET WEIGHT ADDED: 23.4LB.

*Link mfg. Ltd.
223 15th St. N.E.
Sioux Center, IA USA
51250-2120*

*(712) 722-4874
Fax (712) 722-4876*

**QUESTIONS?
CALL CUSTOMER
SERVICE
1-800-222-6283**

CABMATE[®] MODEL FRT50-2P-C

Review the Parts List on page 3 to become familiar with the different components of the CABMATE.

IMPORTANT: Due to many chassis variables caused by installation of special equipment or options, the fit of the CABMATE FRT50-2P-C may be affected and should be evaluated before beginning installation.

IMPORTANT: After the CABMATE is installed, the cab of the truck must be free to move. Before raising the cab to begin installation, check clearances between the cab and any objects the cab may contact when it moves downward or to the rear. Two inches of clearance should be sufficient.

A. Raise the cab and remove the lower rear cab mounts. SAVE all stock mounts bolts for later use (Fig. 1).

B. Remove the U-bolts from the original mounts and install them on the CABMATE (Fig. 2).

NOTE: In order to avoid interference between the CABMATE and existing components the unit halves of the CABMATE may be placed on either side of the truck, also the Shock Absorber may be relocated to either side of the CABMATE.

C. Fasten bolt halves of the CABMATE to the frame using the stock mount bolts (Fig. 2).

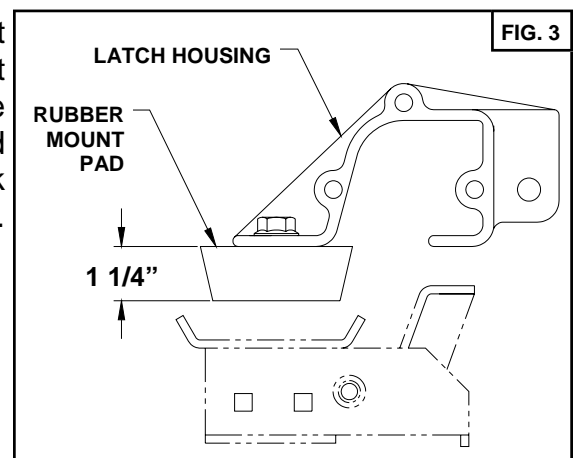
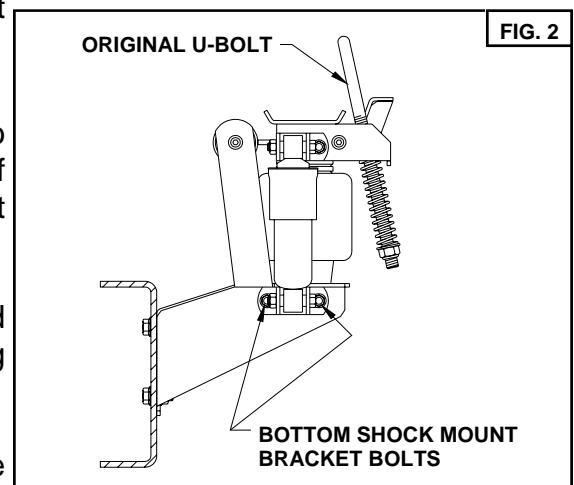
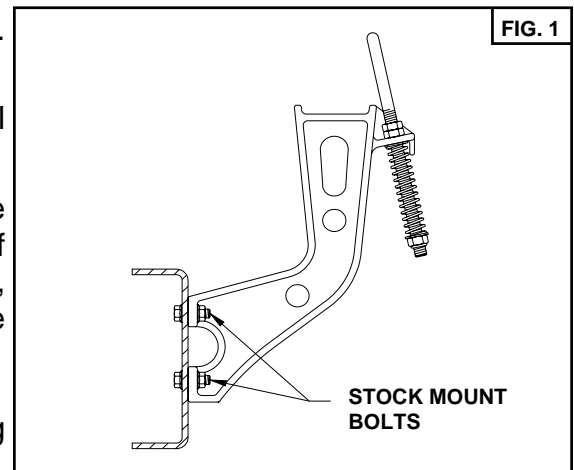
D. See page 2 for plumbing instructions and height adjustments.

IMPORTANT: In order to properly latch CABMATE to the cab the rubber mount pad must be 1 1/4" tall. If necessary shim or replace the pad to achieve this height (Fig. 3).

IMPORTANT: The height of the rubber mount pad should be checked periodically to insure proper latching of the CABMATE.

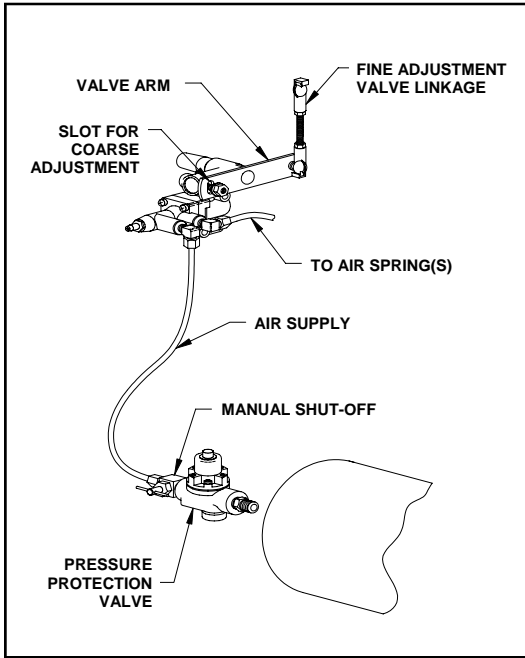
E. Lower the cab, align the rubber mount pads with the CABMATE, and latch the cab to the CABMATE.

F. With the CABMATE securely latched to the cab and set at design height, loosen the bottom shock mount bracket bolts so the shock mount bracket can move freely in the adjustment slots. With the shock mount bracket located in a position that puts no side load on the top shock bushing, tighten the shock mount bracket bolts (Fig. 2). **SECURELY TIGHTEN ALL FASTENERS.**



PLUMBING INSTRUCTIONS

WARNING: FOR SAFETY PURPOSES THE CABMATE MUST BE SUPPLIED FROM A PRESSURE PROTECTED CIRCUIT. IN THE EVENT OF AN AIR LEAK IN THE CAB SUSPENSION, FAILURE TO PROVIDE A PRESSURE PROTECTED CIRCUIT MAY LOSS OF AIR PRESSURE TO VITAL SYSTEMS ON THE VEHICLE.



WARNING: LOSS OR APPLICATION OF AIR PRESSURE TO CABMATE WILL CAUSE SUDDEN MOVEMENT OF THE CAB. PRIOR TO INSTALLING OR PERFORMING ANY MAINTENANCE, BLOCK UP THE CABMATE TO PREVENT THE POSSIBILITY OF INJURY.

WARNING: CONNECT THE CABMATE DIRECTLY TO THE MAIN AIR TANK. YOU WILL NEED AN AIR PRESSURE PROTECTION VALVE IN THE LINE. (INCLUDED IN THE PRESSURE PROTECTION KIT, LINK MFG. PART NO. 1350-0000). DO NOT USE AN AIR PRESSURE REGULATOR.

A. With the tank at 0 p.s.i., remove the existing plug or fitting from the desired port.

B. Apply joint compound to the fittings and install the pressure protection kit. **DO NOT USE TEFLON TAPE.** Be sure that the arrows on the valve are pointing in the direction of air flow and the vent hole is pointed down.

NOTE: Additional fittings/reducers may be required to attach the hex nipple to the main air tank.

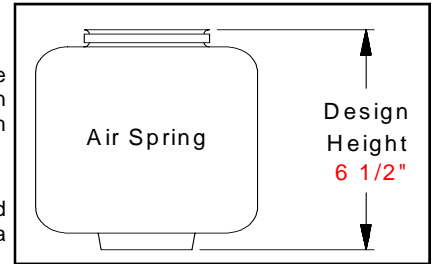
C. Run the 1/4" airline from the shut-off valve to the CABMATE. Be sure that the airline has enough clearance so that there are no pinch points that may restrict or cut the airline. Secure the airline using the cable ties supplied by Link Mfg.

D. Tighten all plumbing fittings. Then, with the system at operating pressure (90 to 110 p.s.i), open the Manual Shut-off Valve to supply air to the CABMATE. (There is an approximate 5 second delay in the Height Control Valve.) Check the system for air leaks.

E. Check for proper operation of the height control valve. Disconnect the valve linkage from the valve arm. Push the lever **down** 45° and hold for 5 seconds, air should flow into the air spring(s). Return the valve arm to the neutral position. Push the valve arm **up** 45° and hold for 5 seconds, air should evacuating from the air spring(s). Return the valve arm to the neutral position; no air should flow. Reconnect the valve linkage to the valve arm.

HEIGHT ADJUSTMENTS

Measure the design height of the air spring(s). The height should be **6 1/2 inches ± 1/8**. To change the height, disconnect one end of the valve linkage and adjust accordingly. Tighten the lock nuts on the valve linkage. The valve arm has a slot which will allow for coarse adjustment also. (See diagram above.)



MAINTENANCE

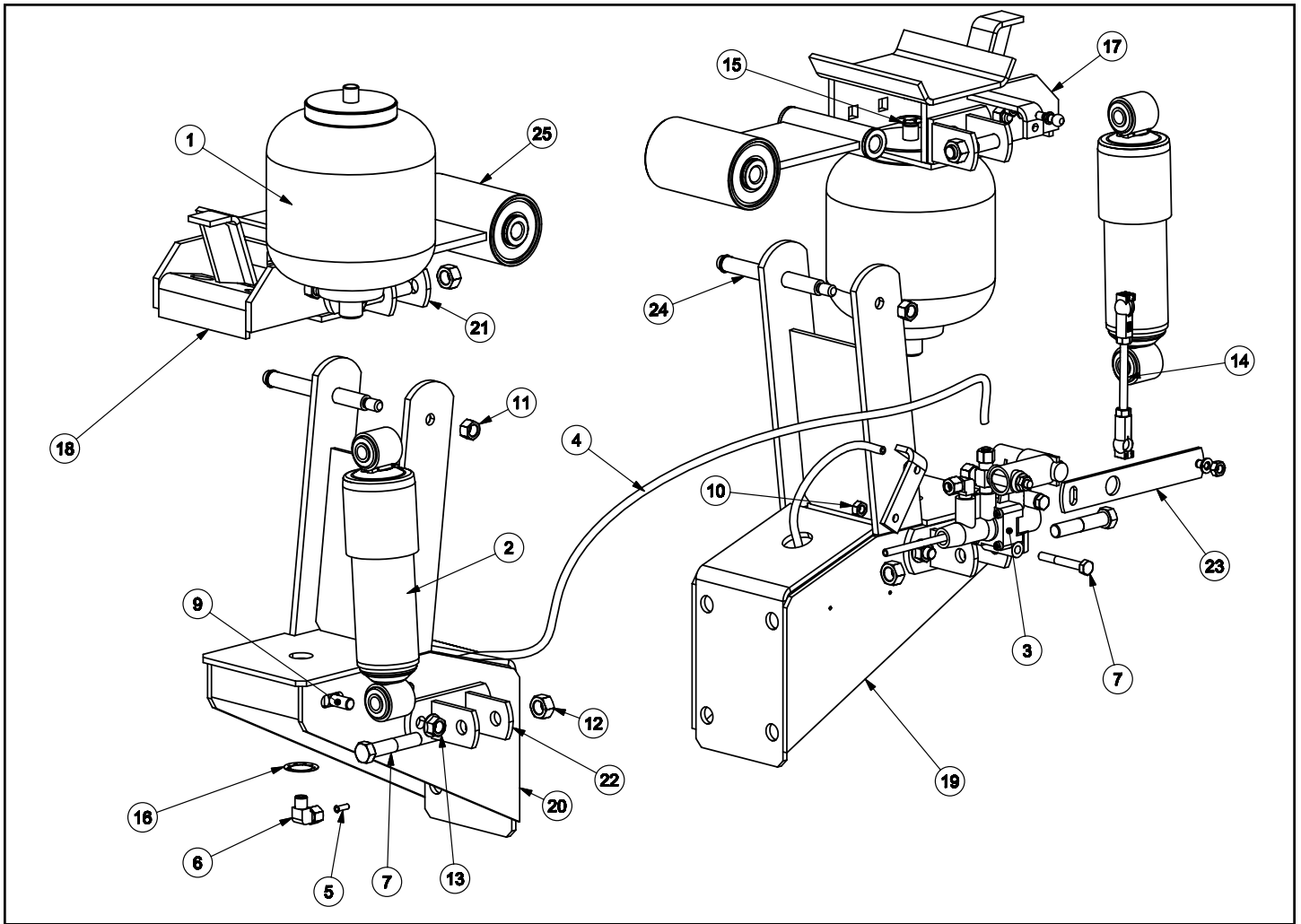
CABMATES need no lubrication and little maintenance. The following components should be checked at the time the truck is being serviced. However, immediate corrective action should be taken if a serious malfunction occurs.

COMPONENT	POSSIBLE PROBLEM	CORRECTIVE ACTION	TORQUE
Airlines	Air leaks	Replace airline	Compression Nut Hand Tight + 1 Turn
Fittings	Air leaks	Remove fitting and apply fresh joint compound. Reinstall fitting, but Do Not Overtighten. Do not use teflon tape.	Threaded into: Metal Plastic 15 Hand Tight Ft. Lbs. + 1 Turn
Air Springs	A. Improper height B. Air leakage	A. Adjust valve linkage to maintain proper air spring height. B. Replace air spring.	Size Metal Plastic 3/8 25 Ft. Lbs 04 Ft. Lbs 1/2 28 Ft. Lbs 10 Ft. Lbs 3/4 30 Ft. Lbs 10 Ft. Lbs
Height Control Valve	A. Air leaks from joint between valve halves. B. Air springs will not inflate when weight is added to the cab. C. Air springs will not deflate when weight is removed from the cab.	A. Tighten 4 Phillips heads screws. B. Replace valve C. Replace valve	30 In. Lbs 1/4 Mount Fasteners 10 Ft. Lbs.
Shock Absorber	Insufficient dampening effect	Replace shocks	45 Ft. Lbs.
Hinge Arm	A. Loose nuts on hinge arm bolts B. Worn bushings.	A. Tighten securely. B. Replace hinge arm.	25 Ft. Lbs.

IMPORTANT: Periodically check the tightness of all fasteners.

* **Note:** If you attempt to disassemble or adjust fittings on the height control valve, it will void your warranty. Contact Link mfg. for assistance.

971010
CO450A



CABMATE® MODEL FRT50-2P-C PARTS LIST

ITEM	PART NO.	PART DESCRIPTION	QTY	ITEM	PART NO.	PART DESCRIPTION	QTY
1	1102-0043	SPRING-AIR	2	14	1500-0251	LINKAGE-VALVE, HEIGHT CONTROL (4.63)	1
2	1201-0054	SHOCK ABSORBER	2	15	1500-0320	1/2 RETAINER RING	2
3	1301-0045	VALVE-CONTROL, HEIGHT	1	16	1500-0330	3/4 RETAINER RING	2
4	1302-0090	0.250 AIRLINE	7.9 ft	17	2255-1000	UNIT TOP VALVE SIDE	1
5	1302-1038	.25 TUBE SUPPORT	5	18	2255-2000	UNIT TOP	1
6	1302-1105	ELBOW, 1/4 TB 1/8 M-NPT	2	19	2255-3000	UNIT BOTTOM (VALVE SIDE)	1
7	1401-0816	1/4 X 2 UNC HEX CAP SCREW (GRADE 5)	2	20	2255-4000	UNIT BOTTOM	1
8	1403-1418	7/16 X 2 1/4 UNF HEX CAP SCREW (GRADE 5)	4	21	2255-6000	TOP SHOCK MOUNT	2
9	1435-1208	3/8 X 1 UNC RND HD SQ NK BOLT (GRADE 5)	8	22	2255-7000	BOTTOM SHOCK MOUNT	2
10	1476-0800	1/4 UNC HEX CENTER LOCK NUT (GRADE B)	2	23	2990-0500	ARM-VALVE (4.00 STD)	1
11	1476-1201	3/8 UNC HEX TOP LOCK NUT (GRADE C)	4	24	2990-0501	BOLT-HINGE ARM (4.25)	4
12	1477-1400	7/16 UNF HEX CENTER LOCK NUT (GRADE B)	4	25	2992-2010	HINGE ARM, TYPE A (5.500)	2
13	1480-1201	3/8 UNC TOP LOCK FLANGE NUT (GRADE F)	8	NS	1350-0000	KIT-PROTECTION, PRESSURE	1