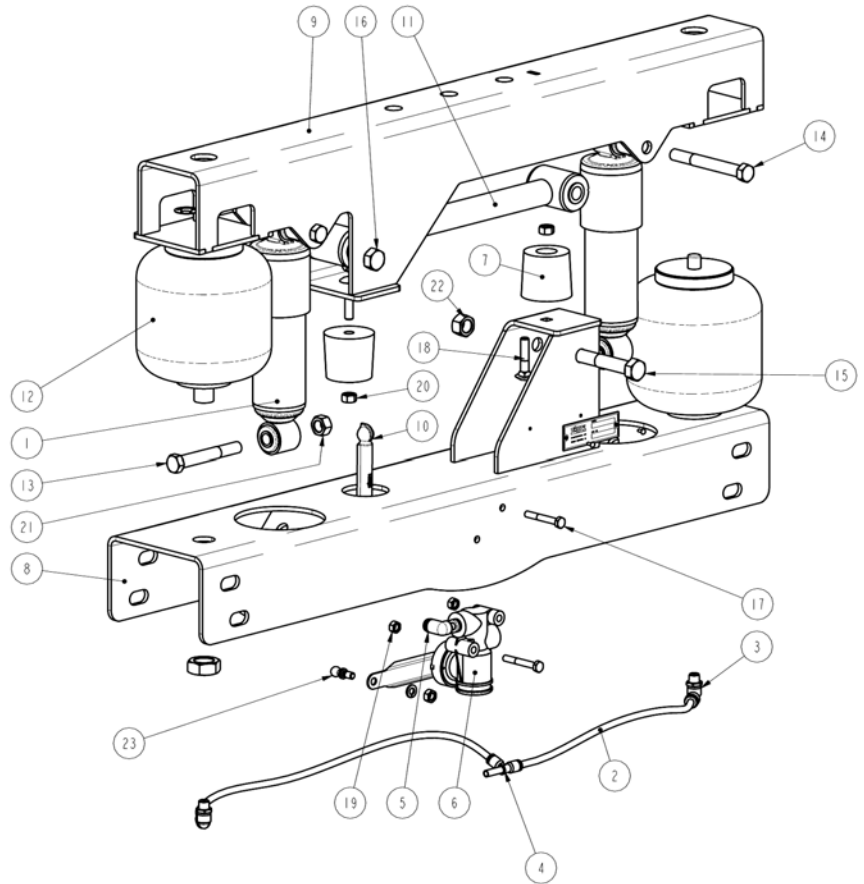
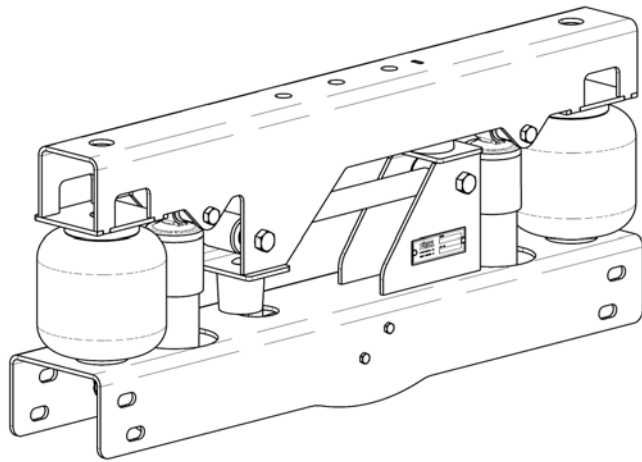


# LINK<sup>®</sup> Cabmate<sup>®</sup> Cab Air Suspension

CABMATE MODEL: OKTP Oshkosh P-Series (27602200)



ITEM	PART #	DESCRIPTION	QTY	ITEM	PART #	DESCRIPTION	QTY
1	12010054	SHOCK ABSORBER	2	13	1403-1426	7/16 X 3 1/4 UNF HEX CAP SCR (GR 5)	2
2	13020090	AIRLINE-NYLON, 1/4" BULK (FEET)	2.5	14	1403-1430	7/16 X 3 3/4 UNF HEX CAP SCR (GR 5)	2
3	13025203	ELBOW, 1/4 TB 1/8 M-NPT	2	15	1404-1624	1/2 X 3 UNF HEX CAP SCR (GR 8)	1
4	13025497	RUN TEE, 1/4 TB 1/4 PTC, PUSH-IN DOT	1	16	1404-1630	1/2 X 3 3/4 UNF HEX CAP SCR (GR 8)	1
5	13025499	ELBOW-PLUG-IN, 1/4"	1	17	1405-0609	HEX CAP SCREW, M6 X 1 X 45, CLASS 8.8	2
6	13500102	SERVICE KIT-HEIGHT CONTROL VALVE	1	18	1435-1012	5/16 X 1 1/2 UNC RND HD SQ NK BOLT (GR 5)	2
7	15000070	BUMPER-JOUNCE, 1.75	2	19	1476-0607	HEX TOP LOCK NUT, M6 X 1, CLASS 8	2
8	27601015	BRACKET-MOUNT, CROSSMEMBER	1	20	1476-1000	5/16 UNC HEX CTR LOCK NUT (GR B)	2
9	27601016	BRACKET-MOUNT, CAB	1	21	1477-1400	7/16 UNF HEX CTR LOCK NUT (GR B)	4
10	29910052	KIT-LINKAGE, LONG	1	22	1477-1601	1/2 UNF HEX TOP LOCK NUT (GR C)	2
11	29934001	LATERAL CONTROL ROD	1	23	2991-0026	SERVICE KIT-PIVOT BALL	2
12	1102A047	AIR SPRING WITH ATTACHMENTS	2				

**LINK<sup>®</sup>** 800.222.6283 | WWW.LINKMFG.COM  
Link MFG, LTD. | 223 15th St NE | Sioux Center, IA 51250

# CABMATE® MODEL 27602200



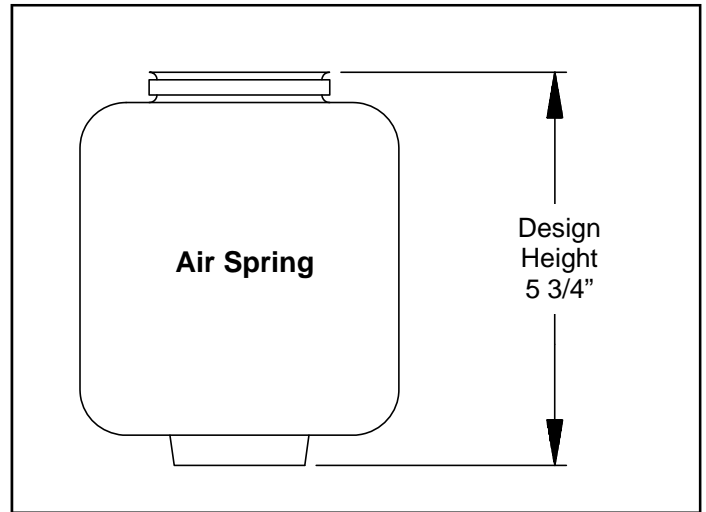
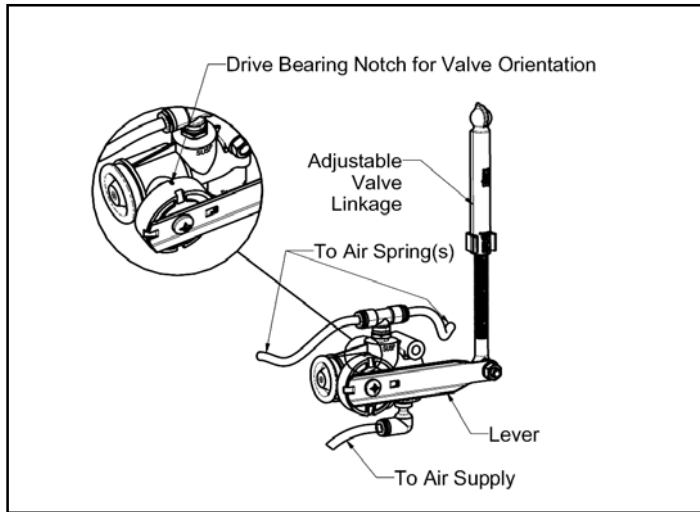
**WARNING: FOR SAFETY PURPOSES THE CABMATE MUST BE SUPPLIED FROM A PRESSURE PROTECTED CIRCUIT. IN THE EVENT OF AN AIR LEAK IN THE CAB SUSPENSION, FAILURE TO PROVIDE A PRESSURE PROTECTED CIRCUIT MAY CAUSE LOSS OF AIR PRESSURE TO VITAL SYSTEMS ON THE VEHICLE.**



**WARNING: LOSS OR APPLICATION OF AIR PRESSURE TO THE CABMATE WILL CAUSE SUDDEN MOVEMENT OF THE CAB. PRIOR TO INSTALLING OR PERFORMING ANY MAINTENANCE, BLOCK UP THE CABMATE TO PREVENT THE POSSIBILITY OF INJURY.**

## HEIGHT ADJUSTMENTS

Measure the design height of the air spring(s). The height should be 5 3/4 inches ± 1/16. To change the height, disconnect one end of the valve linkage and adjust accordingly. Tighten the lock nuts on the valve linkage.



## MAINTENANCE

CABMATES need no lubrication and little maintenance. The following components should be checked at the time the truck is being serviced. However, immediate corrective action should be taken if a serious malfunction occurs.

COMPONENT	POSSIBLE PROBLEM	CORRECTIVE ACTION	TORQUE
<b>Airlines</b>	Air leaks	Replace airline	<b>Compression Nut</b> Hand Tight + 1 Turn
<b>Fittings</b>	Air leaks	Remove fitting and apply fresh joint compound. Reinstall fitting, but <b>Do Not Overtighten. Do not use teflon tape.</b>	<b>Threaded into:</b> <b>Metal</b> <b>Plastic</b> 15              Hand Tight Ft. Lbs.      + 1 Turn
<b>Air Springs</b>	<b>A.</b> Improper height <b>B.</b> Air leakage	<b>A.</b> Adjust valve linkage to maintain proper air spring height. <b>B.</b> Replace air spring.	<b>Size</b> <b>Metal</b> <b>Plastic</b> <b>3/8</b> 25 Ft. Lbs      4 Ft. Lbs <b>1/2</b> 28 Ft. Lbs      10 Ft. Lbs <b>3/4</b> 30 Ft. Lbs      10 Ft. Lbs
<b>Height Control Valve</b>	Air spring(s) will not inflate when weight is added to the cab. <b>OR</b> Air springs will not deflate when weight is removed from the cab.	<b>A.</b> Inspect valve to insure drive bearing notch is located on "SUPPLY" port side of valve. If not, loosen lever screw (but do not remove completely) and pull lever loose from drive bearing, rotate drive bearing until the drive bearing notch is in the correct position and resecure lever by tightening lever screw. <b>B.</b> Replace valve.	<b>1/4 Mount Fasteners</b> 10 Ft. Lbs.  <b>Bearing Screw</b> 40-50 In. Lbs.
<b>Shock Absorber</b>	Insufficient dampening effect	Replace shocks	45 Ft. Lbs.
<b>Lateral Control Rod</b>	<b>A.</b> Loose nuts on lateral control rod bolts <b>B.</b> Worn bushings	<b>A.</b> Tighten securely to clamp the inner sleeve. <b>B.</b> Replace lateral control rod.	40 Ft. Lbs.

**IMPORTANT:** Periodically check the tightness of all fasteners.

110425  
CV600F