

# Cabmate

ford

freightliner

gmc

international

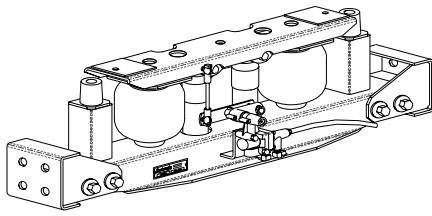
kenworth

mack  
marmon

peterbilt

sterling

volvo  
western star



CABMATE MODEL

**PBS63-A**

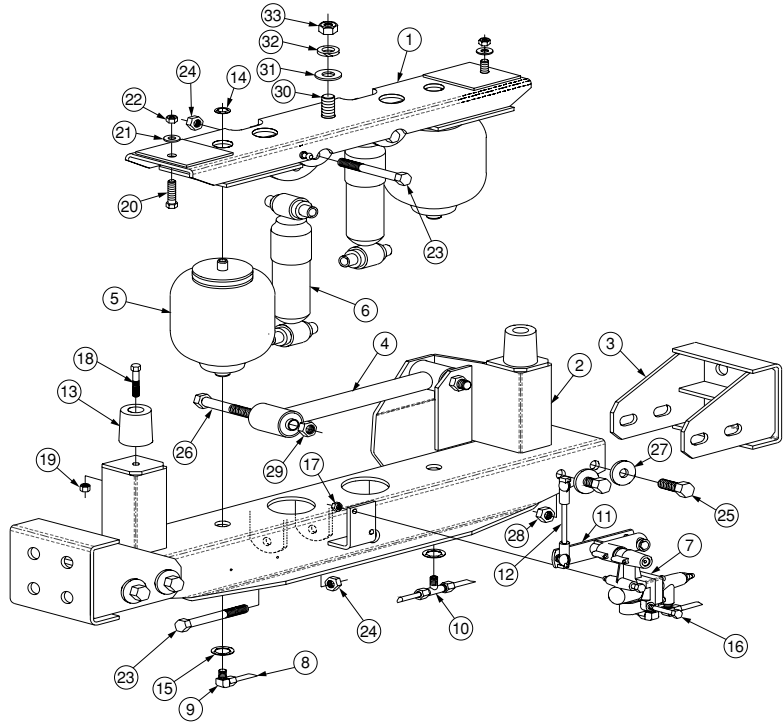
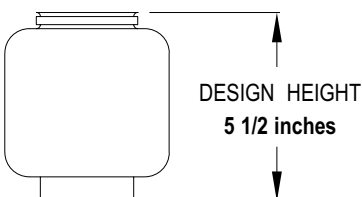
**2901-A000** AFTERMARKET

**2901-B000** FACTORY

**FITS:** Fits most 1978 and newer Peterbilt 63" Sleepers. It replaces the original rear sleeper mount, Peterbilt Part No. 29-00626 (3" tall) or 29-00829 (5" tall).

Wt: 52 lbs. Wt. Added: 30 lbs.  
Installation Time: 3-4 hours

**NOTES:**



## PARTS LIST

1	2901-1000	UNIT TOP	.....	1
2	2901-2000	UNIT BOTTOM	.....	1
3	2901-3000	MOUNT BRACKETS	.....	2
4	2993-2013	LATERAL CONTROL ROD	.....	1
5	1102-A030	AIR SPRING	.....	2
6	1201-1044	SHOCK ABSORBER	.....	2
7	1301-0012	HEIGHT CONTROL VALVE	.....	1
8	1302-0090	1/4 AIRLINE	.....	1.2'
9	1302-1105	MALE ELBOW (1/8 NPT)	.....	1
10	1302-1143	MALE BRANCH TEE (1/8 NPT)	.....	1
11	2990-0700	VALVE ARM	.....	1
12	1500-0248	VALVE LINKAGE	.....	1
13	1500-0070	RUBBER BUMPER	.....	2
14	1500-0320	1/2 RETAINER RING	.....	2
15	1500-0330	3/4 RETAINER RING	.....	2
16	1401-0816	1/4 X 2 UNC BOLT	.....	2
17	1476-0800	1/4 UNC LOCK NUT	.....	2
18	1401-1012	5/16 X 1 1/2 UNC BOLT	.....	2
19	1476-1000	5/16 UNC LOCK NUT	.....	2
20	1401-1210	3/8 X 1 1/4 UNC BOLT	.....	2
21	1487-1200	3/8 FLAT WASHER	.....	2
22	1476-1200	3/8 LOCK NUT	.....	2
23	1403-1428	7/16 X 3 1/2 UNF BOLT	.....	4
24	1477-1400	7/16 UNF LOCK NUT	.....	4
25	1401-1608	1/2 X 1 UNC BOLT	.....	8
26	1404-1624	1/2 X 3 UNF BOLT	.....	2
27	1487-1600	1/2 FLAT WASHER	.....	8
28	1476-1600	1/2 UNC LOCK NUT	.....	8
29	1477-1601	1/2 UNF TOP LOCK NUT	.....	2
30	1401-2012	5/8 X 1 1/2 UNC BOLT	.....	1
31	1487-2000	5/8 FLAT WASHER	.....	1
32	1485-2000	5/8 LOCK WASHER	.....	1
33	1470-2000	5/8 UNC NUT	.....	1
NS	1350-0000	PRESSURE PROTECTION KIT	.....	1