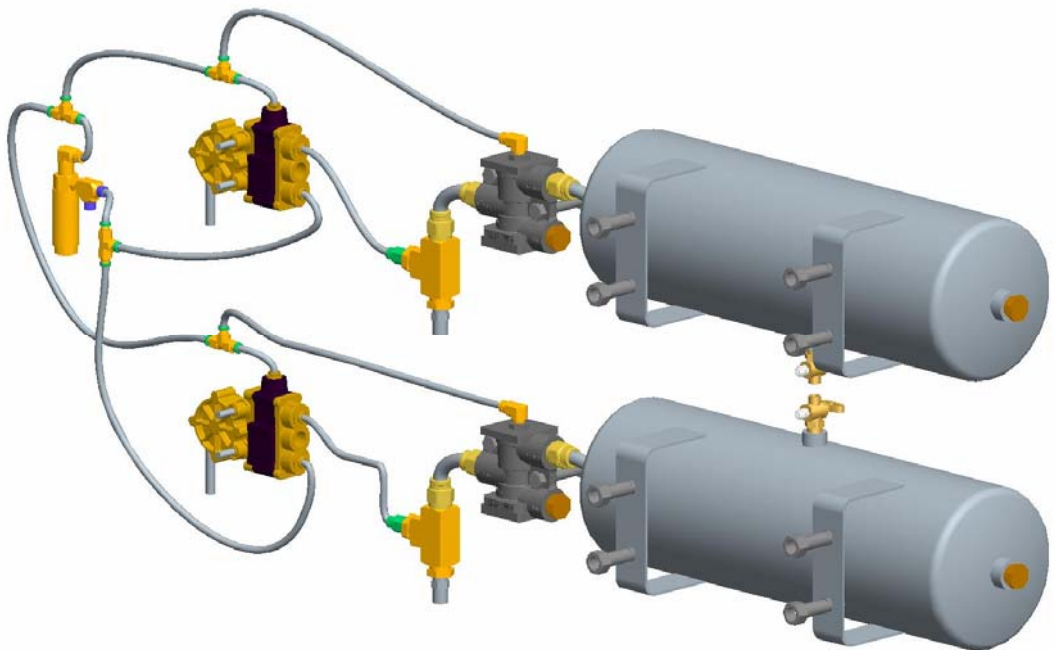




OWNERS MANUAL

RIDE ENHANCEMENT KIT

(Link Part No. 800M0121)



Link Mfg. Ltd.
223 15th St. N.E.
Sioux Center, IA USA
51250-2120

(712) 722-4874
Fax (712) 722-4876

**QUESTIONS?
CALL CUSTOMER
SERVICE
1-800-222-6283**

PROUDLY INSTALLED BY :

COMPANY : _____

INSTALLER SIGNATURE : _____

DATE : _____

050711
80001344

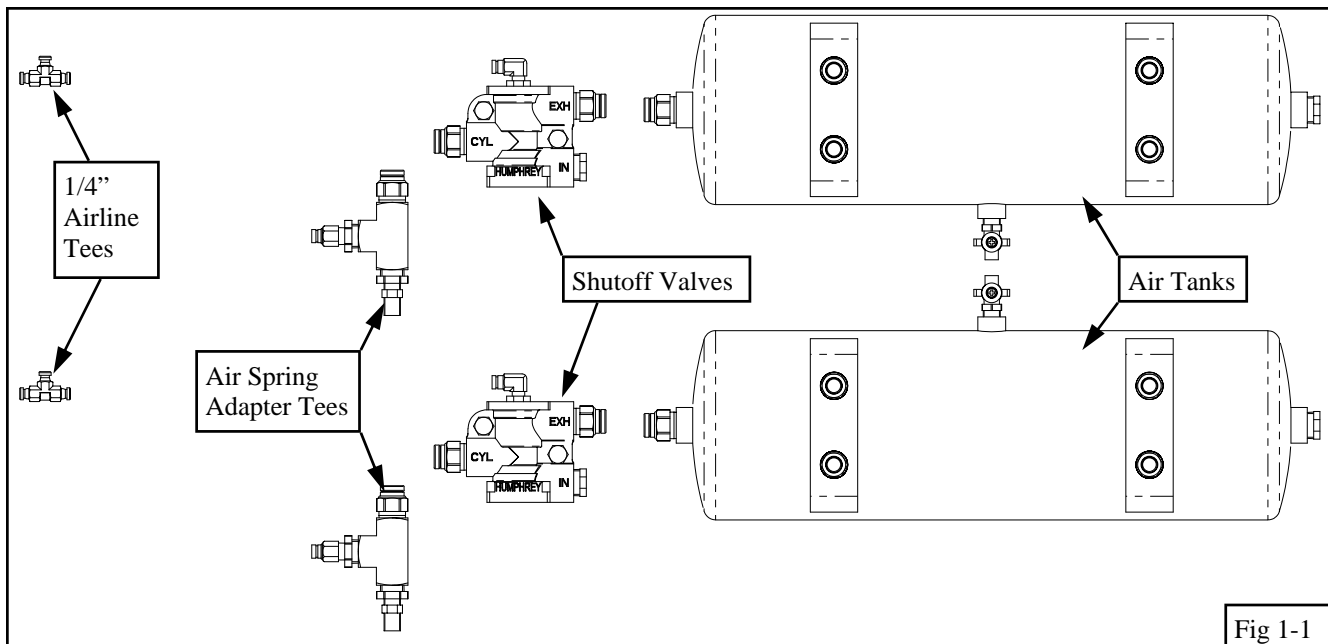
1. INTRODUCTION

IMPORTANT! It is important that the entire installation instructions be read thoroughly before proceeding with the installation.

The ULTRARIDE RIDE ENHANCEMENT KIT is intended to be used only with Link UltraRide Air Suspensions. The kit enhances the ride on UltraRide air suspensions by allowing air to flow freely between the air spring and a ping tank, increasing the air spring's effective volume. Pilot operated shutoff valves are included to retain the air in the ping tanks during dump operations, minimizing the amount of air consumed during the dump.

The ULTRARIDE RIDE ENHANCEMENT KIT

1. **(2) 500 cubic inch Air Tanks**, with all fittings preassembled.
2. **(2) pilot operated Shutoff Valves**, with all fittings preassembled.
3. **(2) Air Spring Adapter Tee assemblies**, with all fittings preassembled.
4. **(2) 1/4" Push-to-Connect Airline Tees**.
5. **Bolts and Nuts**, to mount the air tanks and valves.
6. **Airline, & Corrugated Loom**. Extra airline and corrugated loom is included with this kit to connect it to the UltraRide suspension system and protect the airline from wear.
7. **This Instruction Manual**.



2. MOUNTING THE VALVES & TANKS

The installer is responsible for the exact mounting location and orientation of the ULTRARIDE RIDE ENHANCEMENT KIT. Bolts and nuts are provided for mounting these items.

The ping tanks and shutoff valves can be mounted in any convenient location on the vehicle, BUT the **length of the airline from the air spring to the ping tanks should be kept to a minimum** to ensure their effectiveness. Also, the drain valves should point down to allow moisture to be drained from the tanks.

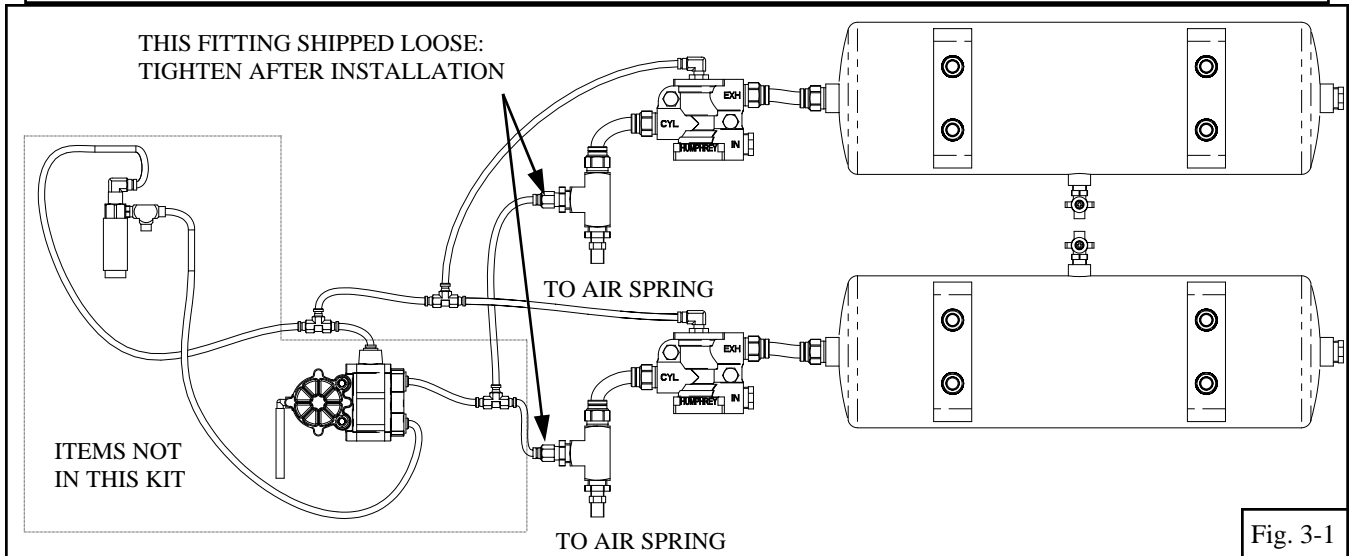
3. PLUMBING DIAGRAMS

See figures 3-1 & 3-2 for plumbing diagrams for both single and dual height control valve configurations.

NOTE: Items boxed within dashed lines are not included with this ULTRARIDE RIDE ENHANCEMENT KIT. Rather, these parts are included with the UltraRide Suspension System.

NOTE: The 1/4" PTC fitting on the Air Spring Adapter Tee is shipped installed, but hand tightened only. This allows it to be easily removed during the installation, allowing the necessary clearance to install the tee assembly onto the air spring.

Single Height Control Valve Plumbing Schematic



Dual Height Control Valve Plumbing Schematic

