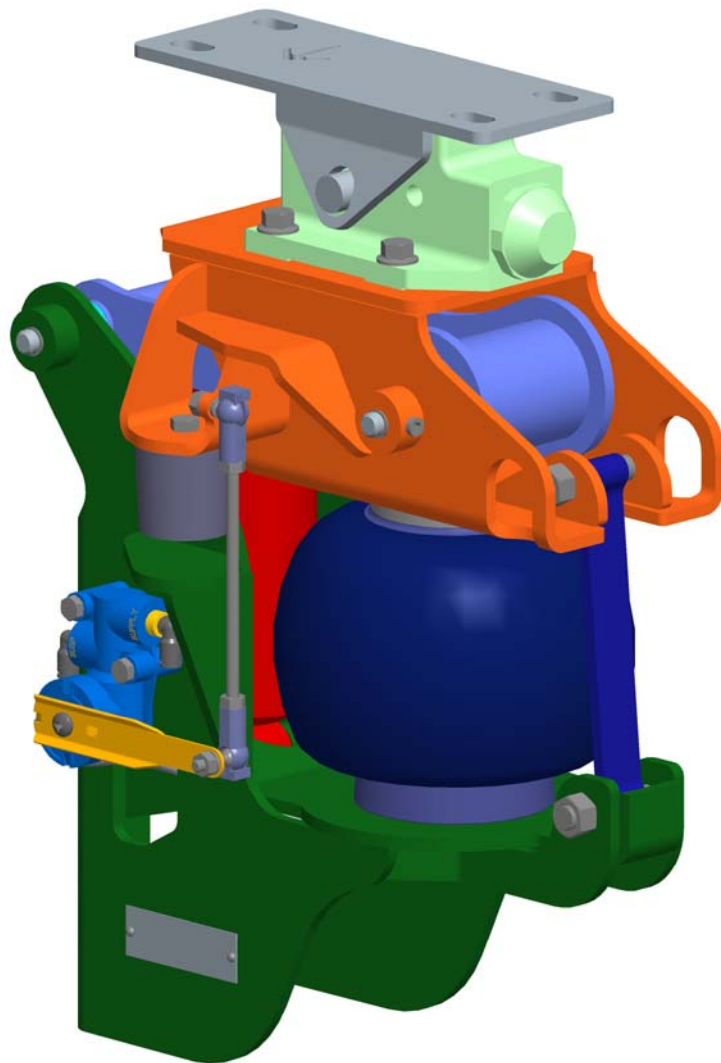


INSTALLATION INSTRUCTIONS

LINK® **Cabmate**®
Cab Air Suspension

**CRANE CARRIER
(2770-C000 & 2770-E000)**



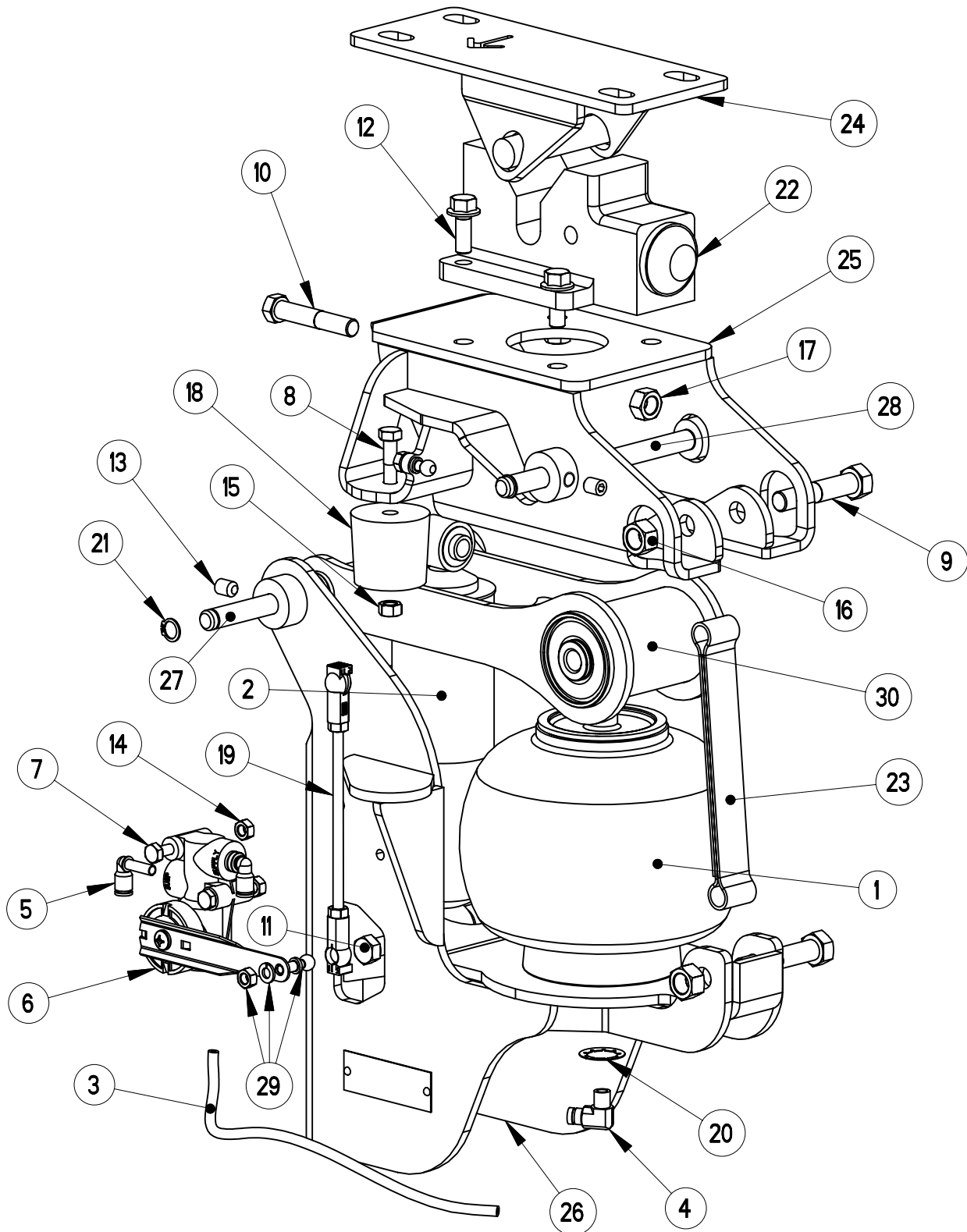
Link mfg. Ltd.
223 15th St. N.E.
Sioux Center, IA USA
51250-2120

(712) 722-4874
Fax (712) 722-4876

**QUESTIONS?
CALL CUSTOMER
SERVICE
1-800-222-6283**

Fits most Crane Carrier Centaur II model terminal tractors, including 1000, 2000 and 4000 series manufactured after Jan. 30, 2001.

CABMATE MODEL 2770-C000 & 2770-E000



CABMATE MODEL 2770-C000 & 2770-E000 PARTS LIST

ITEM #	PART #	PART DESCRIPTION	QTY	
1	1101-0060	SPRING-AIR	1	
2	1202-1185	SHOCK ABSORBER	1	
3	1302-0090	0.250 AIRLINE	1.17 ft.	
4	1302-5100	ELBOW, 1/4 TB 1/8 M-NPT, PUSH-IN DOT	1	
5	1302-5499	ELBOW, 1/4 TB 1/4 PTC, PUSH-IN DOT	2	
6	1350-0112	ASSEMBLY-HEIGHT CONTROL VALVE	1	
7	1401-0814	1/4 X 1 3/4 UNC HEX CAP SCREW (GR 5)	2	
8	1401-1012	5/16 X 1 1/2 UNC HEX CAP SCREW (GR 5)	1	
9	1401-1620	1/2 X 2 1/2 UNC HEX CAP SCREW (GR 5)	2	
10	1403-1420	7/16 X 2 1/2 UNF HEX CAP SCREW (GR 5)	1	
11	1403-1428	7/16 X 3 1/2 UNF HEX CAP SCREW (GR 5)	1	
12	1411-1208	3/8 X 1 UNC FLANGE BOLT (GRADE 8)	4	
13	1440-1204	3/8 X 1/2 UNC HEX SOCKET SET SCREW	4	
14	1476-0800	1/4 UNC HEX CENTER LOCK NUT (GRADE B)	2	
15	1476-1000	5/16 UNC HEX CENTER LOCK NUT (GRADE B)	1	
16	1476-1600	1/2 UNC HEX CENTER LOCK NUT (GRADE B)	2	
17	1477-1400	7/16 UNF HEX CENTER LOCK NUT (GRADE B)	2	
18	1500-0070	BUMPER-JOUNCE, 1.75	1	
19	1500-0269	LINKAGE-VALVE, HEIGHT CONTROL (6.88)	1	
20	1500-0330	3/4 RETAINER RING	1	
21	1500-0360	RING-RETAINING, EXTERNAL	4	
22	1500-0690	LATCH-CAB, HYDRAULIC	1	
23	1500-0901	STRAP-PULL (8.00)	1	
24	2770-1007	BRACKET-LATCH, CAB		1
25	2770-1010	BRACKET-MOUNT, LATCH	1	
26	2770-1011	BRACKET-MOUNT, FRAME	1	
27	2990-0066	PIN-HINGE ARM (6.875)	1	
28	2990-0067	PIN-HINGE ARM (6.188)	1	
29	2991-0026	KIT-PIVOT BALL	2	
30	2992-2016	HINGE ARM ASSEMBLY	1	
			2770-E000	2770-C000

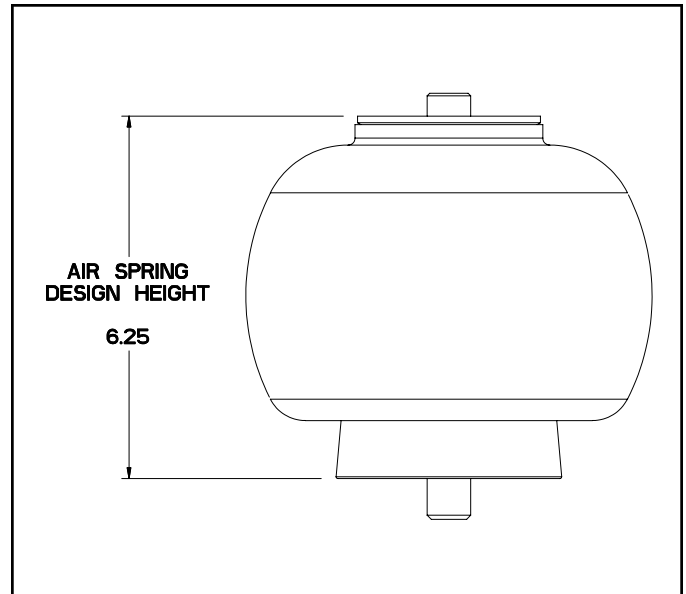
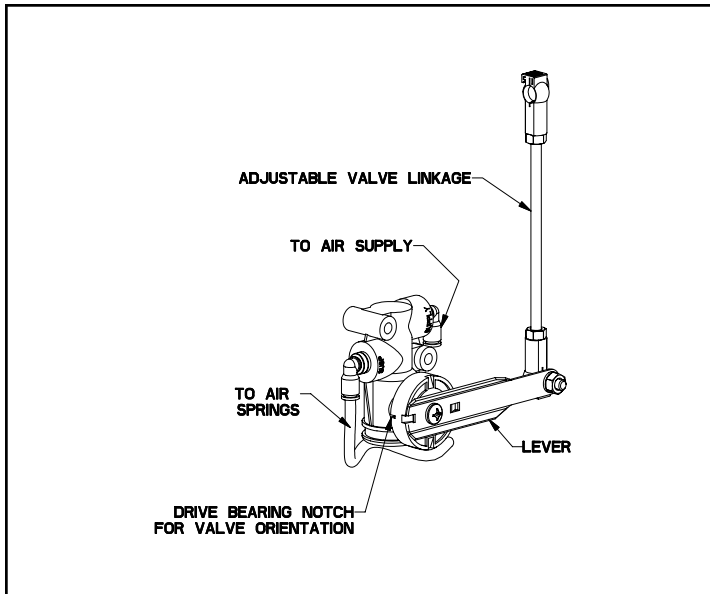
CABMATE 2770-E000

WARNING: FOR SAFETY PURPOSES THE CABMATE MUST BE SUPPLIED FROM A PRESSURE PROTECTED CIRCUIT. IN THE EVENT OF AN AIR LEAK IN THE CAB SUSPENSION, FAILURE TO PROVIDE A PRESSURE PROTECTED CIRCUIT MAY CAUSE LOSS OF AIR PRESSURE TO VITAL SYSTEMS ON THE VEHICLE.

WARNING: LOSS OR APPLICATION OF AIR PRESSURE TO THE CABMATE WILL CAUSE SUDDEN MOVEMENT OF THE CAB. PRIOR TO INSTALLING OR PERFORMING ANY MAINTENANCE, BLOCK UP THE CABMATE TO PREVENT THE POSSIBILITY OF INJURY.

HEIGHT ADJUSTMENTS

Measure the design height of the air spring(s). The height should be 6.25 inches \pm 0.06. To change the height, disconnect one end of the valve linkage and adjust accordingly. Tighten the lock nuts on the valve linkage. The valve arm has a slot which will allow for coarse adjustment also. (See diagram below.)



MAINTENANCE

CABMATES need no lubrication and little maintenance. The following components should be checked at the time the truck is being serviced. However, immediate corrective action should be taken if a serious malfunction

COMPONENT	POSSIBLE PROBLEM	CORRECTIVE ACTION	TORQUE
Airlines	Air leaks	Replace airline	Compression Nut Hand Tight + 1 Turn
Fittings	Air leaks	Remove fitting and apply fresh joint compound. Reinstall fitting, but Do Not Overtighten. Do not use teflon tape.	AIR SPRING MATERIAL Metal Plastic 15 Hand Tight Ft. Lbs. + 1 Turn
Air Springs	A. Improper height B. Air leakage	A. Adjust valve linkage to maintain proper air spring height. B. Replace air spring.	Size Metal Plastic 3/8 25 Ft. Lbs 4 Ft. Lbs 1/2 28 Ft. Lbs 10 Ft. Lbs 3/4 30 Ft. Lbs 10 Ft. Lbs
Height Control Valve	A. Air leakage from joint between valve halves. B. Air springs will not inflate when weight is added to the cab. C. Air springs will not deflate when weight is removed from the cab.	A. Tighten 4 Phillips head screws. B. Replace valve. C. Replace valve.	30 In. Lbs. 1/4 Mount Fasteners 10 Ft. Lbs.
Shock Absorber	Insufficient dampening effect.	Replace shocks.	45 Ft. Lbs.
Hinge Arm	A. Loose nuts on hinge arm. B. Worn bushings.	A. Tighten securely. B. Replace hinge arm.	25 Ft. Lbs.

IMPORTANT: Periodically check the tightness of all fasteners.