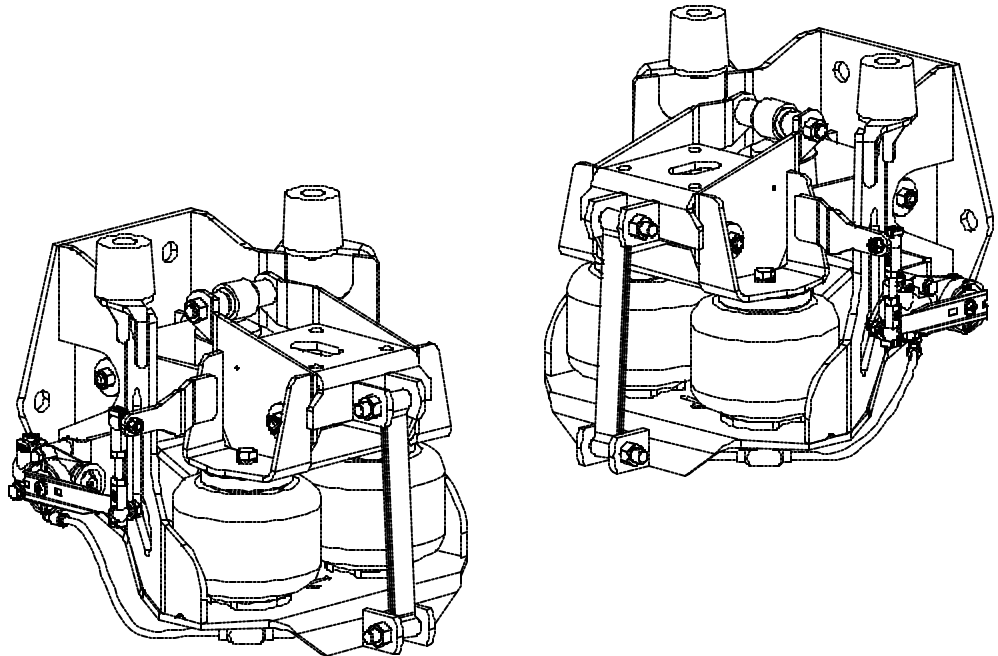




# PRODUCT INFORMATION

Link Mfg. Part # **2269-D003**  
**2269-E003**

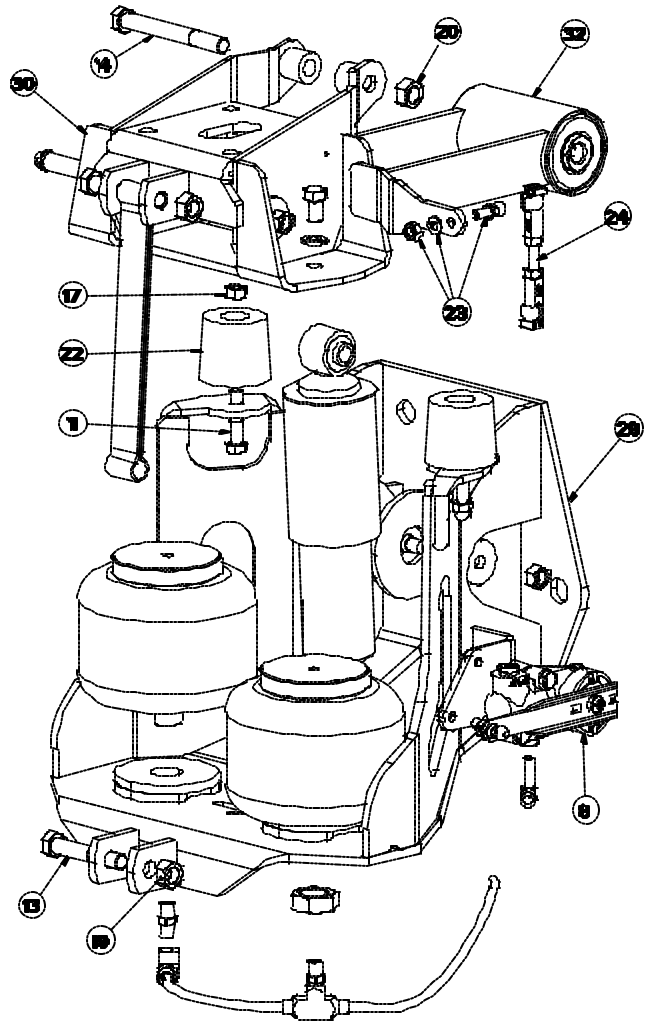
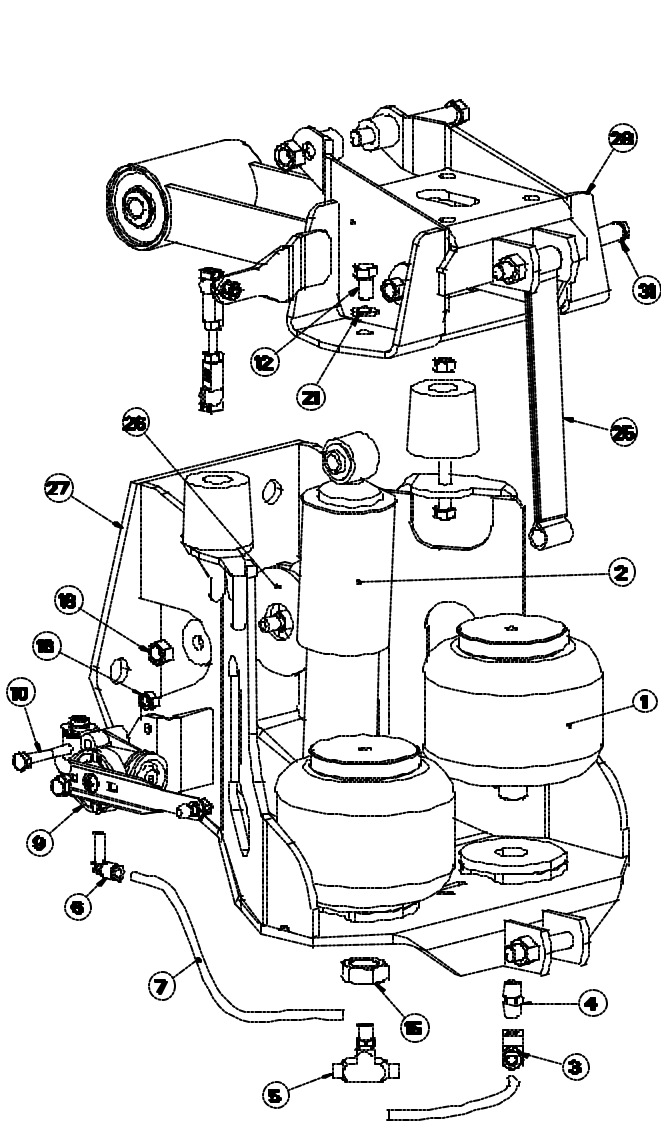


*Link mfg. Ltd.*  
223 15th St. N.E.  
Sioux Center, IA USA  
51250-2120

(712) 722-4874  
Fax (712) 722-4876

**QUESTIONS?  
CALL CUSTOMER  
SERVICE  
1-800-222-6283**

# CABMATE MODEL FIRETRUCK 2269-D003 & 2269-E003



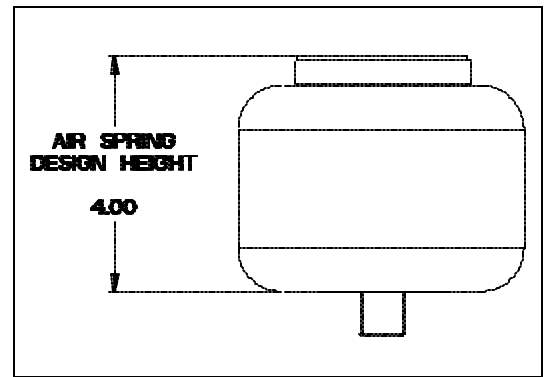
# CABMATE MODEL FIRETRUCK 2269-D003 & 2269-E003 PARTS LIST

ITEM #	PART #	PART DESCRIPTION	QTY	
1	1102-0048	SPRING-AIR	2	2
2	1202-1185	SHOCK ABSORBER	1	1
3	1302-1131	ELBOW, 1/4 TB 1/8 F-NPT	1	1
4	1302-2064	HEX NIPPLE, 1/8 M-NPT	1	1
5	1302-5140	BRANCH TEE, 1/4 TB 1/8 M-NPT, DOT, P-IN	1	1
6	1302-5499	ELBOW, 1/4 TB 1/4 PTC, PUSH-IN DOT	1	1
7	1302-0090	0.250 AIRLINE	1.4'	1.4'
8	1350-0101	ASSEMBLY-HEIGHT CONTROL VALVE	-	1
9	1350-0103	ASSEMBLY-HEIGHT CONTROL VALVE	1	-
10	1401-0814	1/4 X 1 3/4 UNC HEX CAP SCREW (GR 5)	2	2
11	1401-1012	5/16 X 1 1/2 UNC HEX CAP SCREW (GR 5)	2	2
12	1401-1205	3/8 X 5/8 UNC HEX CAP SCREW (GR 5)	1	1
13	1401-1420	7/16 X 2 1/2 UNC HEX CAP SCREW (GR 5)	2	2
14	1403-1430	7/16 X 3 3/4 UNF HEX CAP SCREW (GR 5)	2	2
15	1475-2400	3/4 UNF JAM NUT	2	2
16	1476-0800	1/4 UNC HEX CENTER LOCK NUT (GRADE B)	2	2
17	1476-1000	5/16 UNC HEX CENTER LOCK NUT (GRADE B)	2	2
18	1476-1201	3/8 UNC HEX TOP LOCK NUT (GRADE C)	2	2
19	1476-1400	7/16 UNC HEX CENTER LOCK NUT (GRADE B)	2	2
20	1477-1400	7/16 UNF HEX CENTER LOCK NUT (GRADE B)	2	2
21	1485-1200	3/8 LOCK WASHER	1	1
22	1500-0070	RUBBER BUMPER	2	2
23	2991-0026	KIT-PIVOT BALL	2	2
24	1500-0239	LINKAGE-VALVE, HEIGHT CONTROL (3.13)	1	1
25	1500-0900	STRAP-PULL (9.75)	1	1
26	2269-0026	WASHER-THRUST	2	2
27	2269-5006	MOUNT-FRAME, LH	1	-
28	2269-5007	MOUNT-CAB, LH	1	-
29	2269-5009	MOUNT-FRAME, RH	-	1
30	2269-5009	MOUNT-CAB, RH	-	1
31	2990-0502	BOLT-HINGE ARM (4.75)	2	2
32	2992-2015	HINGE ARM, TYPE B, (8.000) ASSEMBLY	1	1
			2269-D003	2269-E003

# CABMATE MODEL FIRETRUCK

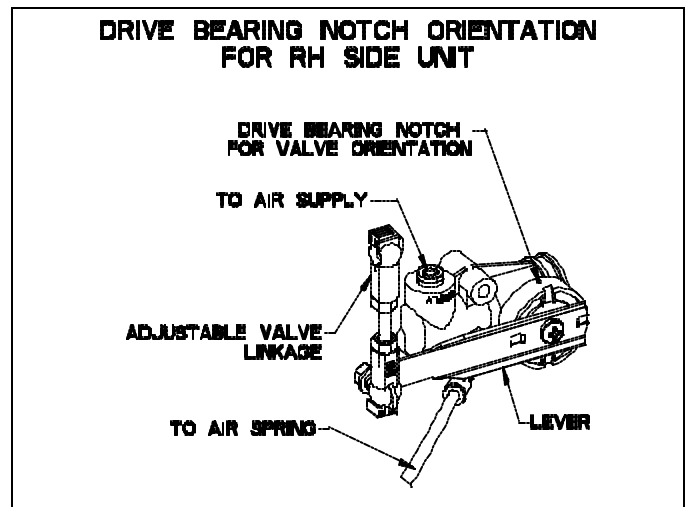
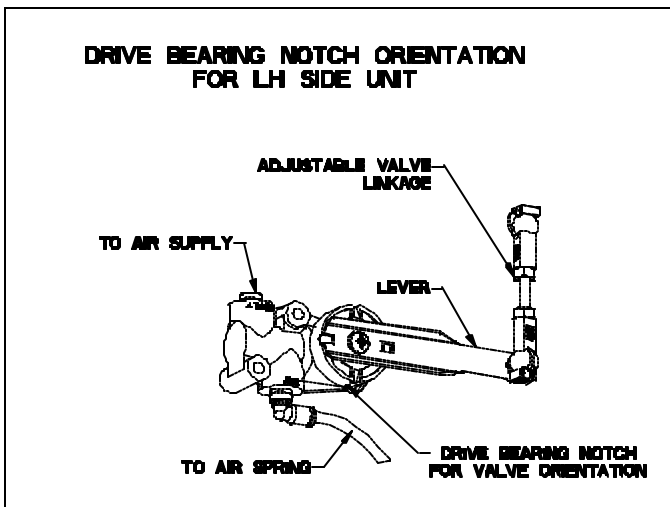
**WARNING: FOR SAFETY PURPOSES THE CABMATE MUST BE SUPPLIED FROM A PRESSURE PROTECTED CIRCUIT. IN THE EVENT OF AN AIR LEAK IN THE CAB SUSPENSION, FAILURE TO PROVIDE A PRESSURE PROTECTED CIRCUIT MAY CAUSE LOSS OF AIR PRESSURE TO VITAL SYSTEMS ON THE VEHICLE.**

**WARNING: LOSS OR APPLICATION OF AIR PRESSURE TO THE**



## HEIGHT ADJUSTMENTS

Measure the design height of the air spring(s). The height should be 4.00 inches  $\pm$  0.06. To change the height, disconnect one end of the valve linkage and adjust accordingly. Tighten the lock nuts on the valve linkage. The valve arm has a slot which will allow for coarse adjustment also. (See diagram below.)



## MAINTENANCE

CABMATES need no lubrication and little maintenance. The following components should be checked at the time the truck is being serviced. However, immediate corrective action should be taken if a serious malfunction

COMPONENT	POSSIBLE PROBLEM	CORRECTIVE ACTION	TORQUE
Airlines	Air leaks	Replace airline	<b>Compression Nut</b> Hand Tight + 1 Turn
Fittings	Air leaks	Remove fitting and apply fresh joint compound. Reinstall fitting, but <b>Do Not Overtighten. Do not use teflon tape.</b>	<b>AIR SPRING MATERIAL</b> <b>Metal Plastic</b> 15 Hand Tight Ft. Lbs. + 1 Turn
Air Springs	A. Improper height B. Air leakage	A. Adjust valve linkage to maintain proper air spring height. B. Replace air spring.	<b>Size Metal Plastic</b> <b>3/8</b> 25 Ft. Lbs 4 Ft. Lbs <b>1/2</b> 28 Ft. Lbs 10 Ft. Lbs <b>3/4</b> 30 Ft. Lbs 10 Ft. Lbs
Height Control Valve*	A. Air leakage from joint between valve halves. B. Air springs will not inflate when weight is added to the cab. C. Air springs will not deflate when weight is removed from the cab.	A. Tighten 4 Phillips head screws. B. Replace valve. C. Replace valve.	30 In. Lbs. <b>1/4 Mount Fasteners</b> 10 Ft. Lbs.
Shock Absorber	Insufficient dampening effect	Replace shocks .	45 Ft. Lbs.
Hinge Arm	A. Loose nuts on hinge arm. B. Worn bushings.	A. Tighten securely . B. Replace hinge arm.	25 Ft. Lbs.

**IMPORTANT:** Periodically check the tightness of all fasteners.